

HOW MANY CELLS SHOULD BE USED FOR PHOTOVOLTAIC PANELS



Find out about energy suppliers" solar panel packages and how much solar panels cost. Battery storage products and prices. The cells need to work within a specific range of conditions set out by the manufacturer for: temperature; ???



A medium-sized household of up to 4 people typically needs a 4-5kW solar system (equal to 8 ??? 13 panels, each 350W or 450W). Solar panels will cost between ?2,500 ??? ?13,000 excluding installation but could offer annual ???



which you can use in your home. Solar photovoltaic (PV) systems are made up of several panels. Each panel has many cells made from layers of semi-conducting material, usually silicon. When light shines on material, it creates a flow of electricity. Solar panels don't need direct sunlight and can work on cloudy days, but they'll



Watts is the power produced by the solar panel, with the entire panel wattage capable of being obtained in ideal conditions. This is a size increase of 20% to 30% above standard 2.0m x 1.0m 72-cell panels, which naturally corresponds to a significant increase in power per panel.



Use our solar panel calculator to find your solar power needs and what panel size would meet them. Solar panel dimensions; Photovoltaic cell efficiency. So, for example, if you have a small roof, it might be a good idea to invest in fewer highly efficient panels. Typically, the efficiency of solar panels ranges from 15-20%, which is already

HOW MANY CELLS SHOULD BE USED FOR PHOTOVOLTAIC PANELS



Use our solar panel calculator to get an idea of how much you could save by installing a solar photovoltaic (PV) system at home. Use the calculator . Based on the information you provide, the solar panel calculator will estimate: What size solar panel system is right for you. How much you could save on your electricity bills.



As the three PV cells are connected in series, the generated output current (I) will be the same (assuming the cells are evenly matched). The total output voltage, V_T will be the sum of all the individual cell voltages added together. That is: $V_1 + V_2 + V_3 = 0.5V + 0.5V + 0.5V = 1.5V$. Then the solar cell I???V characteristic curves of our three cells example are simply added ???



Under typical UK conditions, 1m² of PV panel will produce around 100kWh electricity per year, so it would take around 2.5 years to "pay back" the energy cost of the panel. PV panels have an expected life of least 25 to 30 years, so ???



4. Throw a towel over the solar panel to stop it from generating any power.
5. Touch the red multimeter probe to the metal pin on the male MC4 connector (the one connected to the solar panel), and touch the black ???



Frame: Solar cells are encapsulated in the panel's frame, which is typically made of aluminium, as it is lightweight and durable. This guide provides a simplified method for estimating solar panel size and should be used for reference purposes only. Estimating the Number of Solar Panels

HOW MANY CELLS SHOULD BE USED FOR PHOTOVOLTAIC PANELS



Discover which solar panel sizes and dimensions are the most common in the UK, as well as which size is the best for your home. 0330 818 7480. Become a Partner. Menu. Solar Panels. Heat Pumps Solar cell dimensions are typically around 189 x 100 x 3.99cm (6.2 x 3.28 x 0.13 feet), while solar panel dimensions are usually between 1.6m² to 2m²



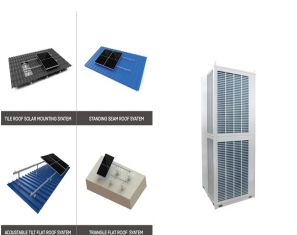
How Many Cells Make Up a Solar Panel. Typically there are 2-configurations of cells used in solar panels for residential and commercial use; 60-cell and 72 cells. Some manufacturers, notably SunPower, offer a 96-cell panel, used in larger installations for businesses where demand is higher.



The most common type of solar panel system used for domestic homes is PV ??? photovoltaic ??? panels. They collect energy from the sun in photovoltaic cells, which is then passed through an inverter to generate electricity.



The average 60-cell solar panel is about 65 inches by 39 inches, or 5.4 feet by 3.25 feet, and weighs around 40 to 50 pounds. The actual dimensions will vary from panel to panel, so we've listed a few for some of the most popular 60-cell ???



Solar Module Cell: The solar cell is a two-terminal device. One is positive (anode) and the other is negative (cathode). A solar cell arrangement is known as solar module or solar panel where solar panel arrangement is known as photovoltaic array. It is important to note that with the increase in series and parallel connection of modules the power of the modules also gets added.

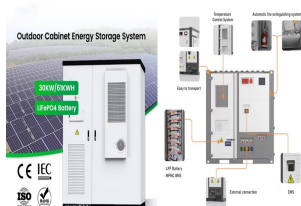
HOW MANY CELLS SHOULD BE USED FOR PHOTOVOLTAIC PANELS



All types of solar Panels are used to convert solar energy into electricity. Each panel consists of several individual solar cells. Most commonly used solar panels are of 72 cells & 60 cells, which have a size of 2m x 1m & 1.6m x 1m respectively.



PV cells, panels, and arrays. The PV cell is the basic building block of a PV system. Individual cells can vary from 0.5 inches to about 4.0 inches across. However, one PV cell can only produce 1 or 2 Watts, which is only enough electricity for small uses, such as powering calculators or wristwatches.



When we connect N-number of solar cells in series then we get two terminals and the voltage across these two terminals is the sum of the voltages of the cells connected in series. For example, if the of a single cell is 0.3 V and 10 such ???



According to the Renewable Energy Hub, domestic solar panel systems usually range in size from around to 1 kW to 5 kW. Allowing for some cloudier days, and some lost power, a 5 kW system can generally produce around 4,500 kWh per year. As we saw above, the average UK home uses around 3,731 kWh per year. So a 5 kW system, or possibly a 4 kW



What happens if my system produces more electricity than I can use? Your solar panel system might produce more electricity than you can use, because you can (usually) only use the electricity it produces in real time. (72 Cells) 620 W. AIKO. AIKO N-Type ABC Black Hole Series (72 Cells) 615 W. Jinko. Tiger Neo N-type 72HL4-(V) 585 W. Longi

HOW MANY CELLS SHOULD BE USED FOR PHOTOVOLTAIC PANELS



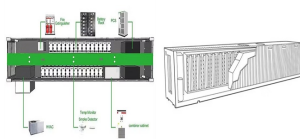
Residential solar panels typically contain 60 or 72 photovoltaic (PV) cells, though some smaller panels may have as few as 48 cells. The number of cells in a residential panel is primarily determined by the desired power ???



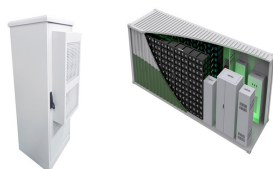
Solar array mounted on a rooftop. A solar panel is a device that converts sunlight into electricity by using photovoltaic (PV) cells. PV cells are made of materials that produce excited electrons when exposed to light. The electrons flow ???



The most common solar panel sizes for residential installations are between 250W and 400W, while larger commercial installations may use panels up to 500W or more. The size of a solar panel affects its efficiency, with larger panels generally being more efficient but also more expensive and heavier.



The photovoltaic effect starts once light hits the solar cells and creates electricity. The five critical steps in making a solar panel are: 1. Building the solar cells. The primary components of a solar panel are its solar cells. P-type or n-type solar cells mix crystalline silicon, gallium, or boron to create silicon ingot.



Solar panels use photovoltaic (PV) cells, which absorb energy from the sunlight, creating electrical charges. The movement of these charges creates a direct current and sends electricity to a solar inverter, which converts it to an alternating current that can be used in the building, stored in a battery system, or sent to the National Grid (if

