

# HOW MANY DEGREES ARE REQUIRED FOR PHOTOVOLTAIC PANEL INSTALLATION



What is the optimal tilt angle of photovoltaic solar panels? The optimal tilt angle of photovoltaic solar panels is that the surface of the solar panel faces the Sun perpendicularly. However, the angle of incidence of solar radiation varies during the day and during different times of the year.



What angle should solar panels be installed on a roof? Anywhere between 20 and 50 degrees will usually enable your system to produce roughly as much electricity as it could. And in the case of most rooftop solar panel installations, the angle of the solar panels is determined by the angle of the roof ??? so there isn't much you can do to change it.



What angle should solar panels be installed in London? For instance, the latitude of London is 51.5 degrees, but the optimum angle for solar panels in this city is 36 degrees. However, in the case of most rooftop solar panel installations, the angle of the solar panels is determined by the angle of the roof - there isn't much you can do to change it.



What angle should solar panels be installed in a garden? When it comes to solar installation in your garden, the best angle and orientation are very similar to rooftop installation - ranging from about 30 to 40°. Since solar panels in gardens are often ground-mounted, they can be adjusted to different tilt angles easily.



What is the ideal solar panel angle? The solar panel angle of your solar system is different depending on which part of the world you are. Solar panels give the highest energy output when they are directly facing the sun. The sun moves across the sky and will be low or high depending on the time of the day and the season. For that reason the ideal angle is never fixed.

# HOW MANY DEGREES ARE REQUIRED FOR PHOTOVOLTAIC PANEL INSTALLATION



What temperature should a solar panel be positioned? Somewhere around 35 degrees is the best compromise for maximum electricity generation throughout the year. Your solar panel positioning can have a huge impact on your system's output. It's crucial to get this right, so your panels have the best chance to soak up as much daylight as possible and generate more electricity for your home.



How to Install Solar Panels at Home? Are you considering installing solar panels at home to harness renewable energy and save on electricity bills? In this guide, we will take you through a detailed step-by-step process of installing solar panels at home, from planning to powering up your solar system. Things to Consider Before Solar Panel Installation: 1. Analyze



The chart shows the energy output of the solar panel for different elevation angles, from 0° to 90°. The elevation angle of the sun changes with the seasons, as explained above. The summer is the season when the



In the wide world of photovoltaic (PV) solar panels, there are many different global products, all with unique technologies, capabilities, and specificities. To put a single number on it, however, it is generally believed that the ideal operating temperature for an average solar panel is around 77 degrees Fahrenheit or 25 degrees Celsius. As

Initial Capacity  
25000  
Initial Energy  
500 MWh  
IP Code  
IP54



Under typical UK conditions, 1m<sup>2</sup> of PV panel will produce around 100kWh electricity per year, so it would take around 2.5 years to "pay back" the energy cost of the panel. PV panels have an expected life of least 25 to 30 years, so even under UK conditions a PV panel will generate many times more energy than was needed to manufacture it.

# HOW MANY DEGREES ARE REQUIRED FOR PHOTOVOLTAIC PANEL INSTALLATION



Use our solar panel buying advice and see our solar panel brand reviews to help make your decision. What is the best angle and roof direction for solar panels? The table below shows the percentage of the maximum output you will get ???



Use our solar panel calculator to get an idea of how much you could save by installing a solar photovoltaic (PV) system at home. Use the calculator . Based on the information you provide, the solar panel calculator will estimate: What size solar panel system is right for you. How much you could save on your electricity bills.



The rate at which the open circuit voltage of a solar panel will change as its temperature changes is defined Then for every degree celsius drop in panel cell temperature, the voltage will rise by:  $40V \times 0.27\% = 0.108V$



The installer (or a dedicated surveyor) should always make sure the roof is strong enough before proceeding with a solar panel installation. How they'll do this depends on the type of roof, but it usually leads to a positive conclusion. Most modern roofs can hold much heavier objects than solar panels ??? such as people ??? because they come

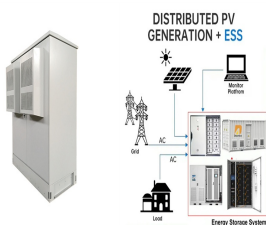


The best all-year-round angle for PV (photovoltaic) solar panels in the UK is 35-40 degrees. The best angle for each region within the UK will vary slightly within this. For seasonal changes, the best angle for ???

# HOW MANY DEGREES ARE REQUIRED FOR PHOTOVOLTAIC PANEL INSTALLATION



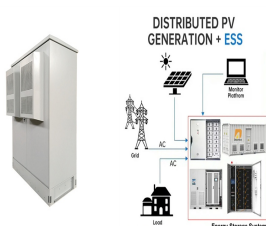
Here are two simple methods for calculating approximate solar panel angle according to your latitude. Calculation method one. The optimum tilt angle is calculated by adding 15 degrees to your latitude during winter, and ???



Check out all the need-to-know things of solar panel output here! The Eco Experts . Solar Panels. Solar Panels. Back A solar panel works best when installed on a south-facing roof at a 35-degree angle. However, solar panels can still produce a decent amount of power on an east-facing or west-facing roof, and at an angle anywhere between 10



For maximum output, the sweet spot for solar panels in the continental U.S. is facing roughly south and tilted between 15 and 40 degrees, according to the Department of Energy. That keeps the panels in the sun ???



A solar rooftop means solar panel installation in home or business rooftop and generally, solar panel installation measures in kilowatt (kW). If the consumers are paying electricity bills of ~Rs. 2,000 to 3,000 per month and ~Rs. 30,000 to 50,000 on yearly basis the ideal requirement of the house is 2kW or 3kW.



With the bright light conditions and the efficiency as measured, calculate the size of solar panel required to power: A ratio of average power demand approximately 0.1 Watt. For the bright light the power was 59.09 watts and the efficiency was  $(59.09/1)/400 = 0.15$ .

# HOW MANY DEGREES ARE REQUIRED FOR PHOTOVOLTAIC PANEL INSTALLATION



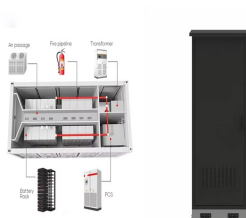
A solar panel installer performs two essential tasks ??? installing PV systems & maintaining solar systems that are already in place. Installing PV Systems. To install a new solar system, the solar panel technician must assess a client's location and home.



Are you considering installing solar panels on your property in Ireland? With the government's push towards renewable energy, it's no surprise that more and more people are turning to solar power. But before you jump in, it's important to understand the regulations and standards surrounding solar panel installation in Ireland.???



Your installer must gain building regulations approval from your local authority for their solar panel system plan before they can proceed. They will have to prove your roof can comfortably support the weight of your chosen ???



The impact of direction on solar panel output. Your solar panel system's direction is one of the biggest factors in determining its output. This chart below uses an average of 26 arrays in Yorkshire that all have peak power ratings of 4kWp, and confirms that south-facing is the best direction.

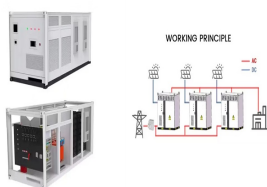


If you have any concerns about the condition of your roof, consult a professional to ensure its suitability for solar panel installation. Preparing the Roof for Installation. Once the roof has been deemed suitable, it's time to prepare it for solar panel installation. This involves cleaning the roof surface and making any necessary repairs.

# HOW MANY DEGREES ARE REQUIRED FOR PHOTOVOLTAIC PANEL INSTALLATION



The best angle to install solar panels in the UK is around 40 degrees. This will ensure that the solar panels get the most possible daylight throughout the year, so they can produce lots of electricity. However, you can ???



Monocrystalline solar panels are made from a single silicon crystal and tend to be more expensive but convert 15-24% of sunlight. Panel efficiency can impact the number of panels needed for your system and ???



While the efficiency of solar panels might vary, solar panel sizes typically don't, as most companies have a standard solar panel square footage to make installation easier. The standard solar panel size dimensions are about ???



Orientation and Tilt: The orientation of a roof plays a crucial role in determining the efficiency of a solar panel system. Ideally, a solar panel system should be installed on a roof that faces south and has a slope of 30 degrees. However, ???



The individual solar cells are arranged onto a solar panel. The solar panel is coated in glass or another laminate to protect the cells from damage. A new technology allows solar panels to be placed on a thin strip of backing, usually aluminum, and covered with a plastic film, which decreases the weight and cost of a solar panel.

# HOW MANY DEGREES ARE REQUIRED FOR PHOTOVOLTAIC PANEL INSTALLATION



Level 3 Award in the Installation and Maintenance of Small Scale Solar Photovoltaic Systems - BPEC Level 3 Award in the Installation of Small Scale Solar Photovoltaic Systems (2399-11) - City & Guilds Level 3 Award in the Installation and Maintenance of Small Scale Solar Photovoltaic Systems (2399-12) -City & Guilds Issue: 4.0 Date 16/09/2020



Your solar panels will ideally face true south, at an angle of 35-40 degrees. All is not lost if you don't have a south-facing roof, however. In this article, we'll explain how to ensure that your solar panels are positioned to ???



How many solar panels are needed to power a house? How much space is needed to put solar panels on a roof? Lower pitched roofs and roofs pitched at 45 degrees or greater than the 30 degrees used in the illustration, will also see a reduction in overall power generation. The more directly a solar panel faces the sun, the more light the panel



46. Solar Panel Life Span Calculation. The lifespan of a solar panel can be calculated based on the degradation rate:  $L_s = 1 / D$ . Where:  $L_s$  = Lifespan of the solar panel (years)  $D$  = Degradation rate per year; If your solar panel has a degradation rate of 0.005 per year:  $L_s = 1 / 0.005 = 200$  years 47. System Loss Calculation



While existing homes may need to be assessed to see if a solar panel installation is a worthwhile endeavour (based on size and orientation of the roof), new builds can be designed with this renewable tech in mind. fall under Permitted Development or if full planning permission is required . 3. Make space for the solar panel accessories

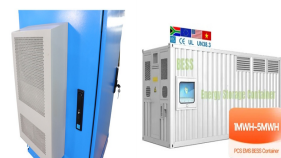
# HOW MANY DEGREES ARE REQUIRED FOR PHOTOVOLTAIC PANEL INSTALLATION



To maximize efficiency and reduce energy costs, you'll want to find the best solar panel tilt angle for your solar power system. When the sun is lower in the sky, solar panels need a greater tilt angle to receive direct sunlight. When the sun is higher, panels require less tilt.



Discover how to calculate the optimum solar panel angle for your solar system according to your location and the season. Two calculation methods explained. PV Quality. PV Factory Audit. The optimum tilt angle is calculated by adding 15 degrees to your latitude during winter, and subtracting 15 degrees from your latitude during summer. For



A solar panel installer, also known as a photovoltaic (PV) installer, is a professional responsible for the installation and maintenance of solar energy systems. These systems convert sunlight into electricity and are becoming increasingly popular due to the rising awareness of sustainable energy sources.