

HOW MANY KILOGRAMS DOES THE FLYWHEEL ENERGY STORAGE SYSTEM CONSUME



What is the difference between a flywheel and a battery storage system? Flywheel Systems are more suited for applications that require rapid energy bursts, such as power grid stabilization, frequency regulation, and backup power for critical infrastructure. Battery Storage is typically a better choice for long-term energy storage, such as for renewable energy systems (solar or wind) or home energy storage.



What is flywheel energy storage system (fess)? Flywheel Energy Storage System (FESS) can be applied from very small micro-satellites to huge power networks. A comprehensive review of FESS for hybrid vehicle, railway, wind power system, hybrid power generation system, power network, marine, space and other applications are presented in this paper.



What type of energy is stored in a flywheel? The principle of rotating mass causes energy to store in a flywheel by converting electrical energy into mechanical energy in the form of rotational kinetic energy.



How does a flywheel energy storage system work? A flywheel energy storage system works by spinning a large, heavy wheel, called a flywheel at very high speeds. The energy is stored as rotational kinetic energy in the spinning wheel. When electricity is needed, the flywheel's rotational speed is reduced, and the stored kinetic energy is converted back into electrical power using a generator.



Are flywheels a good choice for electric grid regulation? Flywheel Energy Storage Systems (FESS) are a good candidate for electrical grid regulation. They can improve distribution efficiency and smooth power output from renewable energy sources like wind/solar farms. Additionally, flywheels have the least environmental impact amongst energy storage technologies, as they contain no chemicals.

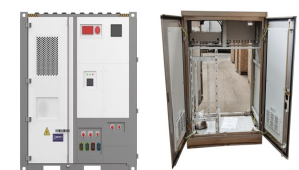
HOW MANY KILOGRAMS DOES THE FLYWHEEL ENERGY STORAGE SYSTEM CONSUME



What are the potential applications of flywheel technology? Flywheel technology has potential applications in energy harvesting, hybrid energy systems, and secondary functionalities apart from energy storage. Additionally, there are opportunities for new applications in these areas.



Video Credit: NAVAJO Company on The Pros and Cons of Flywheel Energy Storage. Flywheels are an excellent mechanism of energy storage for a range of reasons, starting with their high efficiency level of 90% ???



Most modern high-speed flywheel energy storage systems (FESS) consist of a huge rotating cylinder supported on a stator (the stationary part of a rotary system) by magnetically levitated bearings. These bearings are ???



Flywheel Contents show Flywheel Flywheel Material Components of Flywheel Flywheels Advantages Over Batteries Advantages of Flywheel Disadvantages of Flywheel A flywheel is an inertial energy storage device. It ???



A overview of system components for a flywheel energy storage system. The Beacon Power Flywheel [10], which includes a composite rotor and an electrical machine, is designed for frequency regulation

HOW MANY KILOGRAMS DOES THE FLYWHEEL ENERGY STORAGE SYSTEM CONSUME



Long Lifespan: With no chemical reactions involved, flywheels can last for tens of thousands of cycles, significantly outperforming batteries in terms of longevity. High Efficiency: Flywheel systems are highly efficient at storing ???



A Flywheel UPS energy storage system uses stored kinetic energy that is transformed into DC power. Explore how flywheel energy storage works, specs, and more. Periodically review your energy consumption and adjust your ???



The flywheel energy storage operating principle has many parallels with conventional battery-based energy storage. The flywheel goes through three stages during an operational cycle, like all types of energy storage systems: ???



Today, flywheel energy storage systems are used for ride-through energy for a variety of demanding applications surpassing chemical batteries. A flywheel system stores energy mechanically in the form of kinetic energy by ???



Flywheel Energy Storage Systems (FESS) work by storing energy in the form of kinetic energy within a rotating mass, known as a flywheel. Here's the working principle explained in simple way, Energy Storage: The system ???

HOW MANY KILOGRAMS DOES THE FLYWHEEL ENERGY STORAGE SYSTEM CONSUME



Flywheel Energy Storage Systems (..verses latest battery systems?)

Designing products which consume less energy has shot to the top of the agenda in this energy-hungry world ??? not just in the automotive ???