

HOW MANY METERS ABOVE THE GROUND CAN PHOTOVOLTAIC PANELS BE INSTALLED



The solar panel installers normally arrange the scaffolding. Typically, it goes up a day or two before the solar panel installation. 9 times out of 10, the company that puts the scaffolding up is a sub-contractor to the solar panel installer. This is important.



For example, ground-mounted systems can be installed in agricultural areas within 300 meters of industrial, commercial, and quarry zones, as well as within 150 meters of highways. Distance requirements for solar panels from boundaries include:



Just like with utility smart meters, there may be a way for you to opt-out of having a solar panel smart meter. Many of these meters are installed by power companies without the homeowner's knowledge or consent. If you realize that your solar panel system has a smart meter, contact the company that installed it and ask about opting out.



To answer this, we need to look at how much energy solar panels can generate. Most home panels can each produce between 250 and 400 Watts per hour. According to the Renewable Energy Hub, domestic solar panel systems usually range in size from around to 1 kW to 5 kW. Allowing for some cloudier days, and some lost power, a 5 kW system can

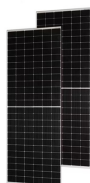


Ground mounted solar panels are 20%-25% more efficient than rooftop solar panels, as they can be positioned in the ideal direction and angle to maximise energy production and they have a lower degradation rate.; ???

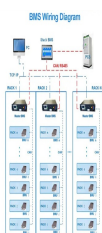


How are Ground Mounted Solar Panels Installed? Ground-mounted solar panels can be installed in a few ways, but are typically connected to a structure to help maximise sunlight exposure. These structures commonly ???

HOW MANY METERS ABOVE THE GROUND CAN PHOTOVOLTAIC PANELS BE INSTALLED



typically panels of approx 1.7m² ((h)1.7m x (w) 1m) but there are many sizes, models and wattages (currently 270-410w) available. What do they do? The sun produces an abundant source of clean, renewable energy, which can be converted into electricity with PV panels. A typical installation should generate around 150-215 units (kWh) per year for



A ground-mounted solar panel is the same as a rooftop solar panel. The only difference is ground-mount solar panels get set up on the ground and use a standard installation or a pole mount



photovoltaic (PV), wind, hydro and anaerobic digestion (AD) technologies up to 5MW and fossil fuel-derived Combined Heat and Power (CHP) up to 2kW or "microCHP", (up to a maximum of 30,000 Eligible Installations) can receive FIT payments, providing all ???



9 Case Study: Ground Preparation and Foundation for a Residential Solar Panel Array. 9.1 Background; 9.2 Project Overview; 9.3 Implementation; 9.4 Results; 9.5 Summary; 10 Expert Insights From Our Solar Panel Installers About Ground Preparation and Foundation for Solar Panel Arrays; 11 Experience Solar Excellence with Us! 12 Conclusion. 12.0.1



I. Introduction . Welcome to our guide on ground-mounted solar panels! Nowadays, everyone's talking about solar energy, and it's easy to see why 's a clean, green way to power our homes and businesses. While many people think of solar panels as something you put on the roof, there's another option that's gaining popularity: ground-mounted solar panels.

HOW MANY METERS ABOVE THE GROUND CAN PHOTOVOLTAIC PANELS BE INSTALLED



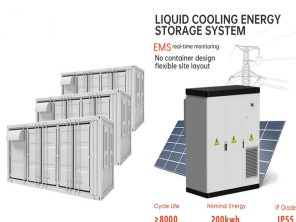
Solartherm UK have been installing ground mounted solar PV systems for well over 11 years (at the time of writing) our company has designed and installed arrays of 6 panels to 600 panels. We have designed, completed DNO and obtained planning on ???



To make a rough estimate we can assume that for every Watt of solar panel capacity installed, you will generate 0.85 kWh of electricity per year. Either by using our rough estimate above or by requesting a free solar panel design You may also want to consider how much electricity you are going to use in the future and work out how many



Now, by average solar panel wattage per square foot, we can put a 10.35kW solar system on an 800 sq ft roof. This is how many solar panels you can put on this roof: If you only use 100-watt solar panels, you can put 103 100-watt solar panels on the roof. If you only use 300-watt solar panels, you can put 34 100-watt solar panels on the roof.

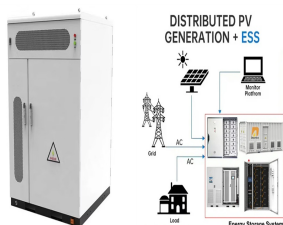


While the efficiency of solar panels might vary, solar panel sizes typically don't, as most companies have a standard solar panel square footage to make installation easier. The standard solar panel size dimensions are about ???



Ground Mounted Solar Panel Systems UK; Can I build my own Solar Panel System UK? - DIY Solar; Getting Solar Panel Quotes in the UK 2024; How much Space do I need for Solar Panels? UK Guide 2024; The Smart Export Guarantee (SEG) UK; Solar Panels for New Builds: A UK Guide for 2024; Solar Panels for Schools and Colleges in the UK; How Much

HOW MANY METERS ABOVE THE GROUND CAN PHOTOVOLTAIC PANELS BE INSTALLED



Solar panel building regulations. Panels should not be installed above the ridgeline and should project no more than 200mm from the roof or wall surface on pitched roofs. Note: these conditions will be satisfied if panels are mounted parallel to the roof on a sloping roof. a ground mounted array is no more than 9m 2, no more than 3m in



Solar panels are generally quite reliable. Many owners don't experience technical faults in over a decade of ownership. Nearly seven in 10 owners had had no problems with their solar panels in our survey of over ???



Most roofs can easily manage 10kg per square meter, while the average weight load of a solar panel on a slanted roof is about 1.3kg per square meter (2.3kg per m2 on a flat roof). While they can weigh up to 18kg to 20kg, the force they exert per metre on a roof can be lower when installed with mounting.



A 3.5 kWp solar panel system would typically require around 10 solar panels (at 350 W each) and cost between ?5,000 and ?10,000. *kWp stands for "kilowatt peak". This is the amount of power that a solar panel or array will produce per hour in prime conditions.

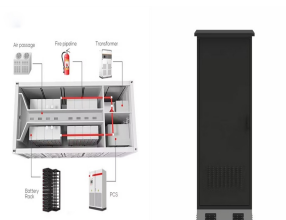


Unlike typical solar panel systems, ground-mounted panels are fixed into the floor, although you would need around 30 square meters to fit enough solar panels to power a three-bedroom house. Ground-mounted solar panels are installed on the ground instead of on a building's roof. They allow for optimal placement to maximize sun

HOW MANY METERS ABOVE THE GROUND CAN PHOTOVOLTAIC PANELS BE INSTALLED



What is a ground-mounted solar panel system? the solar panels will be positioned a few inches to several feet above the ground. Module-level power electronics, required for rapid shutdown, will be attached to the panels, but other system components can be located some distance away, so you can put temperature-sensitive equipment like string



To calculate the KWp (kilowatt-peak) of a solar panel system, you need to determine the total solar panel area and the solar panel yield, expressed as a percentage. Here are the steps involved in this calculation: 1. ???



Based on thousands of quotes from the EnergySage Marketplace, the average home ground-mounted solar panel system costs about \$60,200 before incentives. But because most homeowners qualify for the 30% federal tax credit, you should expect to only pay \$42,140 upfront. Interest rates will increase the price tag if you choose to finance your system with a loan.



Here is a piece on Solar Panel Fixing Options built to help Developers, Contractors, Architects, and Homeowners grasp what's on offer for fixing PV panels. Above all, in-roof solar panels are more aesthetically pleasing than traditional on-roof PV panels. Some systems can be installed lower on the ground. When installing ground-mounted



Aside from its meaning in common usage, solar panel efficiency is a technical specification that indicates how much electricity the cells can produce per m² of photovoltaic surface area. The higher the percentage, the ???