

HOW MANY PHOTOVOLTAIC PANELS CAN A SINGLE-PHASE METER SUPPORT



How many solar panels do I Need? The average one-bedroom house should get six solar panels, while a bigger household with four or five bedrooms will usually need 14 panels. Check out our guide to see how many solar panels you need for your home. Are there any downsides to large solar panel systems?



How many solar panels can you have in the UK? What's the maximum number of solar panels you can have in the UK? Assuming your property doesn't require planning permission for a solar installation, there is no legal maximum number of solar panels that you can install on your roof in the UK. Other than usable roof space, there is nothing limiting how many solar panels you can put up there.



How many solar panels can you get without DNO permission? On a single phase supply, you can have up to a 3.68kW inverter without prior approval from the DNO (as it is granted retrospectively). However, the average domestic solar system is 4kWp, equivalent to roughly 10-13 solar panels.



How many solar panels can a roof hold? Solar panel systems under 5 kWp are usually approved without any issues. Installations above 5 kW normally require extra checks, but still almost always get a stamp of approval, albeit after a slight delay. How many solar panels can the average roof hold? The average roof on a three-bedroom house in the UK can hold 20 solar panels.



How much energy does a solar PV system use? If your roof is optimal and you get a solar battery to store excess energy generated by your panels, then a 3.5kW - 4.8kW solar PV system with a battery can cover approx. 50-70% of the consumption of the average home in the UK. This size system, of course, can cover a lot more depending on how much electricity you use and at what times of the day.

HOW MANY PHOTOVOLTAIC PANELS CAN A SINGLE-PHASE METER SUPPORT



Do I need permission to install a solar panel in the UK? Since most UK homes have single-phase electricity, this means anything over 3.68 kWp will require you to gain permission beforehand. DNOs usually approve solar panel installations without too much trouble or delay, though.



PV solar panels tend to vary between 250W to 460W per panel, depending on the size of it and the cell technology used to create each of the modules. To calculate the number of panels you need, divide the hourly ???



The DNO solar limit refers to the maximum capacity of a solar panel inverter that can be connected to the grid without special permission. In the UK, this limit is 3.68kW per phase. This means that properties with a single ???

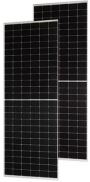


The average solar panel needs only 8.6 kg per square metre, while our roofs can support at least 108 kg per square metre. How many solar panels should you have? An average 3-bedroom home should install 12 solar ???



In a standard single-phase house, you can install a solar panel system that produces up to 3.68 kWp without informing the DNO (Distribution Network Operator). If you have a house with three-phase electricity then you can install ???

HOW MANY PHOTOVOLTAIC PANELS CAN A SINGLE-PHASE METER SUPPORT



You only need to seek approval from your Distribution Network Operator (DNO) before your solar panel installation if its capacity will be over 3.68 kWp per phase. Since most UK homes have single-phase electricity, this ???