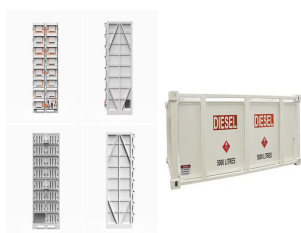


HOW MANY TYPES OF PHOTOVOLTAIC PANELS ARE INSTALLED IN FACTORIES



If you are installing a very large solar panel system, the installation costs may rise slightly, especially if it takes more time to carry out the installation. A way to estimate the installation costs of commercial solar panels is to calculate 0.2p per Watt fitted. That would mean it can cost approximately £2,000 (excl. VAT) to install a 10kW



COST OF SOLAR PANEL INSTALLATION FOR FACTORIES, WAREHOUSES, AND INDUSTRIAL BUILDINGS. The average cost for commercial solar panel installation can be around £16,000 to £70,000 for a small to medium-sized setup. However, the total cost is heavily dependent on your usage.



How much is solar panel installation cost for 3kw, 5kw, 2kw, 1kw, 10kw, for 500w solar panel price philippines the costs will be 20-40 percent lower. However, these module types also have significantly lower efficiencies and are visually less appealing than black monocrystalline modules. Each solar panel model has a factory generation



Explore the financial implications of factory solar panel adoption in our latest article. We break down upfront costs, operational expenses and the potential for long-term savings. Dive into how factors like installation size, panel type and location affect prices, and learn about government incentives such as the Feed-in Tariffs and Smart Export Guarantee.



Many solar panel manufacturers offer different panels for residential and commercial applications. While you can use residential solar panels for commercial systems and vice versa, there are differences between ???

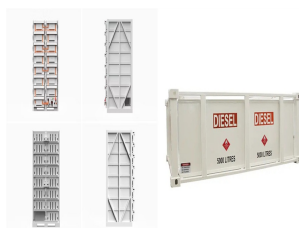
HOW MANY TYPES OF PHOTOVOLTAIC PANELS ARE INSTALLED IN FACTORIES



China is the largest market in the world for both photovoltaics and solar thermal energy. China's photovoltaic industry began by making panels for satellites, and transitioned to the manufacture of domestic panels in the late 1990s. [1] After ???



Reputable, renewable energy installation companies should be members of the Renewable Energy Consumer Code (RECC) as it indicates that a company has signed up to its Office of Fair-Trading approved Consumer Code, which ensures high service standards before, during, and after the installation of renewable energy technology.



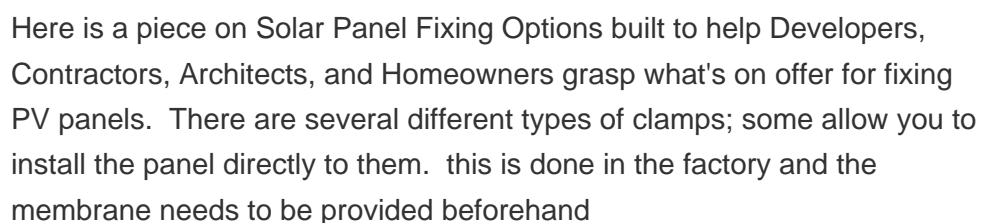
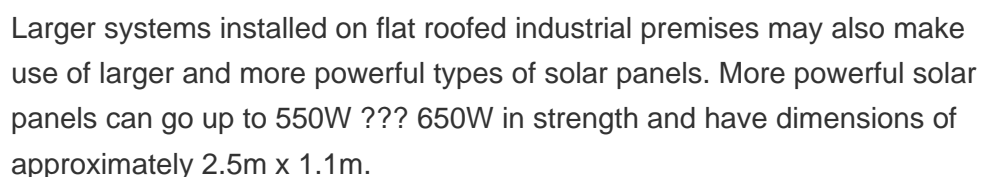
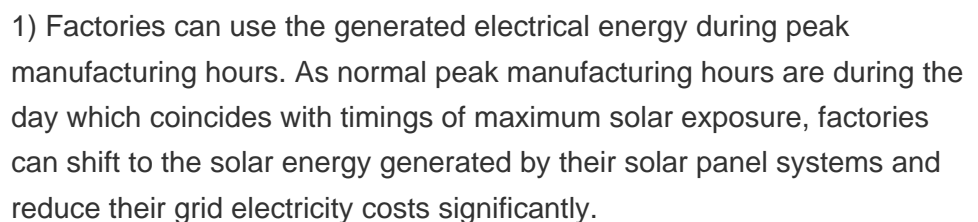
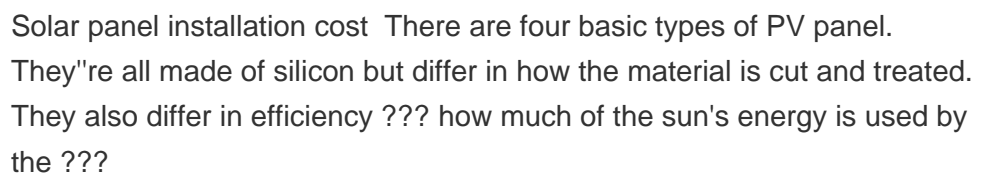
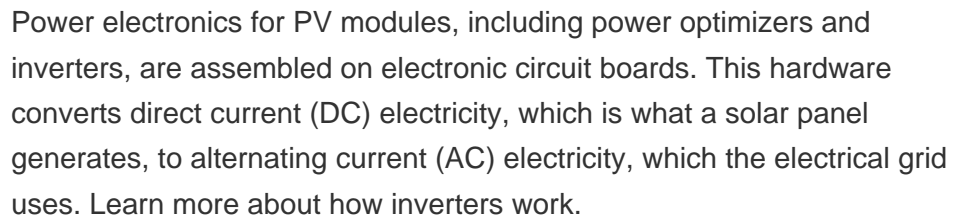
These multi-junction solar panel types have the highest efficiency rate of all existing photovoltaic systems, up to 41%. Such concentrated photovoltaic cells get their name from the features that make them more effective than other ???



Under typical UK conditions, 1m² of PV panel will produce around 100kWh electricity per year, so it would take around 2.5 years to "pay back" the energy cost of the panel. PV panels have an expected life of least 25 to 30 years, so even under UK conditions a PV panel will generate many times more energy than was needed to manufacture it.



5 ? Explore top solar panel manufacturers in China, production centers, and decisions on sourcing the best solar panels made in china. Panel Types: Mono and polycrystalline, bifacial, dual-glass Key Products: N-TOPCon SRP Series: Power outputs ranging from 435W to 580W; S4 SRP Dual-Glass Module: Power outputs from 400W; Conclusion about



HOW MANY TYPES OF PHOTOVOLTAIC PANELS ARE INSTALLED IN FACTORIES



Framed bifacial solar panels are much easier to install than a frameless one, because traditional solar modules are already adapted for framed. Check out the comparison of efficiencies between the most popular commercial solar panel types today: Type of Solar Panel. Total Solar Cell Efficiency. Monofacial Monocrystalline. 18% and above



Many solar panel companies make small solar panels designed specifically for small roofs. You can also opt for high-efficiency solar panels that have conversion rates as high as 23% (compared to the industry average of ???)



Some common solar panel system sizes include a 3kW solar panel system, a 4 kilowatt solar panel system and a 5kW solar panels. For instance, a typical 2kW solar panel system suited for 1-3 people will need anywhere between 5 and 8 solar panels (for 350W panels).



Solar panels usually come with two types of warranties: a product warranty and a performance warranty. The product warranty covers defects in the solar panel itself and typically covers around 20-25 years, although some manufacturers offer ???



Finding an unshaded spot is best, but sometimes shading is unavoidable. Some solar panel systems can minimise the impact of shading using "optimisers". Solar optimisers help improve the overall performance of your solar panel system. So, if one panel is shaded, it doesn't impact how much electricity the other panels can generate.

HOW MANY TYPES OF PHOTOVOLTAIC PANELS ARE INSTALLED IN FACTORIES



All types of solar Panels are used to convert solar energy into electricity. Each panel consists of several individual solar cells. Each panel consists of several individual solar cells. Most commonly used solar panels ???



Example calculation: How many solar panels do I need for a 150m² house ?. The number of photovoltaic panels you need to supply a 1,500-square-foot home with electricity depends on several factors, including average electricity consumption, geographic location, the type of panels chosen, and the orientation and tilt of the panels. However, to get a rough ???



Utility-scale solar panel installations are massive???often between 500- and 30,000 times larger than a residential solar installation???and sell their electricity directly to utilities, meaning they can effectively provide power to ???



You should know that there are limitations for series solar panel wiring. In the U.S., solar strings are required to feature a maximum voltage of 600V, so solar arrays comply with article 690 section 7 of the National Electrical Code (NEC 690.7).



The solar panel manufacturers selected below have many years of experience and can provide high-quality and reliable solar panel systems: Project Solar: The best manufacturer in terms of warranty ??? they offer a warranty period of 99.9 years.

HOW MANY TYPES OF PHOTOVOLTAIC PANELS ARE INSTALLED IN FACTORIES



Global installed PV reached around 400 GW at the end of 2017 and is expected to rise further to 4500 GW by 2050. Solar energy prices have rapidly reduced because of developments in solar technologies. decommissioned PV panels were involved in the types of household and professional WEEE for boosting the exploitation of secondary raw



Although solar panel recycling schemes are becoming more popular worldwide there is still room for a lot of improvement. The global solar panel recycling market size was recorded at \$238.7m (?187.4 m) in 2022 and is projected to grow to \$1.7bn (?1.3bn) by 2028. Ways to Reduce the Environmental Impact of Solar Energy. Habitat loss



Here are the six main types of solar panel, including monocrystalline, polycrystalline, and thin-film, and the best type for your home. Most of the 163,000 solar panel systems installed in 2023 were monocrystalline, as the UK moved decisively towards these more efficient, more stylish panels. Related Reading.



Advantages of Solar Power Benefits of Solar Power in Philippines Benefits of Using Solar Energy Best Solar Panel Types capex model capex vs opex commercial solar panel efficiency Commercial Solar Panel Installation Services Flexible Solar Panels Green Revolution how solar panel works at night lower electricity expense nativetechniks Non



Monocrystalline solar panels are the most cost-effective option. Perovskite panels are more efficient and will be on the market soon . Thin film panels are the cheapest, most versatile choice. It's confusing enough trying to find solar panel prices, never mind choosing between the different types of solar panels to pick the right one for your home.

HOW MANY TYPES OF PHOTOVOLTAIC PANELS ARE INSTALLED IN FACTORIES



These large solar arrays are built near factories, production plants and industrial parks to generate over 1 megawatt of clean electricity. By directly feeding solar energy into the operational grid, industrial facilities can run their machinery, assembly lines and processes.



The majority of domestic and commercial solar panel systems would typically have a strength of 400W ??? 440W with an area of 1.7m x 1.1 approximately, such as the Bauer Glass-Glass bifacial modules. Larger systems installed on flat roofed industrial premises may also make use of ???