

HOW MANY VOLTS ARE SOLAR PHOTOVOLTAIC PANELS



Use our solar panel series and parallel calculator to easily find the wiring configuration that maximizes the power output of your solar panels. For example, let's say you have 3 identical solar panels. All have a voltage of ???



Estimating Voc and Vmp Value For a Panel. 24 volt panel; $24 \text{ volts} \times 0.8 = 18 \text{ volts}$; $24 \text{ volts} + 18 \text{ volts} = 42 \text{ Voc}$; 24 volt panel; $24 \text{ volts} \times 0.2 = 4.8 \text{ volts}$; $24 \text{ volts} + 4.8 \text{ volts} = 28.8 \text{ Vmp}$; If you measure the voltage of a ???



The effect of single, parallel and series attached solar panel on Amps, volts, and power (watts) are explained above in the curve. The curve above shows that the solar panels attached in parallel circuit have more amp's value due to which has more efficiency (higher watts value) compared to single and series attached solar panels.



100-watt solar panel will store 8.3 amps in a 12v battery per hour. 300-watt solar panel will store 25 amps in a 12v battery per hour. 400-watt solar panel will store 33.3 amps in a 12v battery per hour. 500-watt solar panel will store 41.6 amps in a 12v battery per hour. 600-watt solar panel will store 50 amps in a 12v battery per hour.



Solar Panel Efficiency: The solar cell efficiency is its electrical power output divided by the incident light power. How many volts should a solar panel charge? Generally, the 12V PV panels produce around 16-20 ???

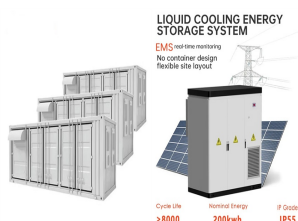
HOW MANY VOLTS ARE SOLAR PHOTOVOLTAIC PANELS



If you purchase a 12v solar panel you should pair it with a 12v battery (a 12 volt lithium battery will work best with the 12 volt solar panels), a 12v inverter, and at least a 12v charge controller. A 24v solar panel should be used with a 24v battery bank, 24v inverter, and at least a 24v charge controller.



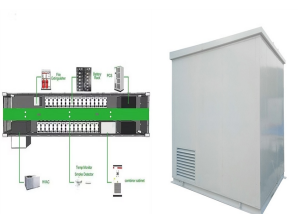
How Many Volts Does a Solar Panel Generate? Small, portable solar panels might produce as little as 5 volts, suitable for charging small devices directly. Residential and commercial solar panels, on the other hand, typically have nominal voltages of 12, 24, or 48 volts, with actual operating voltages being higher under optimal conditions.



4. Throw a towel over the solar panel to stop it from generating any power.
5. Touch the red multimeter probe to the metal pin on the male MC4 connector (the one connected to the solar panel), and touch the black multimeter probe to the metal pin on the female MC4 connector (the one connected to the charge controller).



It represents the total power output of a solar panel. Understanding wattage is essential for determining how much energy a solar panel can produce and, consequently, how much power your devices or appliances can draw from it. For example, a solar panel with a voltage of 20V and an amperage of 5A has a wattage of 100W.



One of the most common questions asked by people who are considering installing solar panels is, "how many volts does a solar panel produce?" In this article, we will explore the answer to this question in detail. Solar panels are made up of photovoltaic cells that convert sunlight into electricity. When sunlight hits the surface of the

HOW MANY VOLTS ARE SOLAR PHOTOVOLTAIC PANELS



To wire your solar panels in series, simply link the positive MC4 connector of the first solar panel to the negative MC4 connector of the next one, and continue this pattern for the remaining panels. At 21 Volts, our parallel-connected solar panels were producing only 1.6 Amps, which amounts to 33.6 Watts: Power (Watts) = Voltage (Volts) x



How Many Volts Does a Solar Panel Produce? Solar panels produce varying voltages depending on the number of cells they contain. While there are larger cells available, the industry standard is a 156 mm * 156 mm ???



Understanding how many volts a 100 watt solar panel produces is crucial for maximizing its efficiency and ensuring it meets your energy needs. In this article, we have explored the relationship between watts and volts in solar panels. While the voltage output of a 100 watt solar panel can vary depending on several factors, such as temperature



When it's hot, the panel's output decreases. Keep this in mind when planning your solar system! Solar Panel Types and Their Voltage Outputs Monocrystalline vs. Polycrystalline Solar Panels: Voltage Differences. 60 cells x 0.6 volts = 36 volts; So, a typical 60-cell solar panel can generate a DC voltage between 20 and 40 volts. Just like



A 12v 150 watt solar panel will produce about 18.3 volts and 8.2 amps under ideal sunlight conditions. (inc. 1kw/m² of sunlight intensity, no wind, and 25 °C temperature) The above values are based on DC (Direct current) output, but to run most of the household appliances we need AC (Alternating current)

HOW MANY VOLTS ARE SOLAR PHOTOVOLTAIC PANELS



What size fuse for solar panels? Solar panel Voltage ratings: Solar panels are classified by their nominal voltages (e.g., 12 Volts or 24 Volts), but these voltages are only used as a reference for designing solar systems. For example, the following solar panel is classified as a 12 Volt panel.



To find the solar panel output, use the following solar power formula:

$$\text{output} = \text{solar panel kilowatts} \times \text{environmental factor} \times \text{solar hours per day}$$
. The output will be given in kWh, and, in practice, it will depend on how sunny it is since the number of solar hours per day is just an average.



Watt (W) and kilowatt (kW): a unit used to quantify the rate of energy transfer. One kilowatt = 1000 watts. Solar panels' rating in watts specifies the maximum power the solar panel can deliver at any time, providing insights into their capacity.. Watt-hours (Wh) and kilowatt-hours (kWh): a measure of energy production or consumption over time. The actual ???



Solar Panel Calculator is an online tool used in electrical engineering to estimate the total power output, solar system output voltage and current when the number of solar panel units connected in series or parallel, panel efficiency, total area and total width. These estimations can be derived from the input values of number of solar panels, each panel unit power and voltage, width and



How many volts does a solar panel produce? A solar panel typically produces 0.5 Volts per cell, with the total voltage depending on the number of cells. A 750-watt panel typically produces 220 volts at 3.18 volts. ???

HOW MANY VOLTS ARE SOLAR PHOTOVOLTAIC PANELS



200 watt solar panel how many amps? 12v 200 watt solar panel will produce between 10 - 11 amps under ideal conditions (STC). Formula: But most of our household appliances are designed according to our grid voltage output (110-240 volts). To convert DC output from solar panels into AC, we use an inverter. But inverters are not 100% efficient.



The Photovoltaic effect: The solar panels consist of multiple solar cells. They are typically composed of silicon. When the sunlight hits the solar panels, the electrons are excited, and this creates an electrical field. On average, the 200 watt ??? 12-volt solar panel would be able to produce 60 to 100 Amp hours per day. If the solar panel



In this case, we could readily calculate the amps output by such an array through the formula: $\text{Amps} = 800 \text{ watts} / 12 \text{ volts} = 66.67 \text{ amps}$. Thus, this solar array can produce up to 66.67 amps. Accordingly, it's recommended to use a charge controller rated at 70 amps to avoid overloading and possible malfunction. If a 100-Watt solar panel is



Total solar panel size: Enter the total size of your solar panel system (eg. 4 200w solar panels $4 \times 200 = 800\text{w}$ solar system) (Charge controller size = Solar panel capacity (W)/battery volts). But I would advise adding some extra space like about 20% for safety reasons.



Summary. You need around 200-400 watts of solar panels to charge many common 12V lithium battery sizes from 100% depth of discharge in 5 peak sun hours with an MPPT charge controller.; You need around 150-300 watts of solar panels to charge many common 12V lead acid battery sizes from 50% depth of discharge in 5 peak sun hours with an ???

HOW MANY VOLTS ARE SOLAR PHOTOVOLTAIC PANELS



If you know the number of PV cells in a solar panel, you can, by using 0.58V per PV cell voltage, calculate the total solar panel output voltage for a 36-cell panel, for example. You only need to sum up all the voltages of the individual ???



Here is the formula of how we compute solar panel output: Solar Output = Wattage x Peak Sun Hours x 0.75. Based on this solar panel output equation, we will explain how you can calculate how many kWh per day your solar panel ???



300-watt Solar Panel How Many Amps and volts? 12v 300 watt solar panel will produce about 16.2 amps and 18.5 volts under ideal conditions (STC). That is why you need a 30A charge controller with 300 watt solar panel, which will regulate the voltage output of the solar panel to safely charge a 12 or 24-volt battery.



Now we will consider these losses when finding the currents for different types of solar panels. How Many Amps Does a 200-watt Solar Panel Produce? A 200-watt solar panel will produce 1.3 amps of AC current in the US with 120 volts. However, if you live in a place with 230 volts AC grid, then this same panel will produce 0.68 amps of AC current.



Use our solar panel size calculator to find out the ideal solar panel size to charge your lead acid or lithium battery of any capacity and voltage. For example, 50ah, 100ah, 200ah, 120ah. Enter battery volts (V): Solar Battery. How Many Watt Solar Panel To Charge 220ah Battery? Leave a Comment Cancel reply.

HOW MANY VOLTS ARE SOLAR PHOTOVOLTAIC PANELS



How Many Volts Does a Solar Panel Produce? Solar panels' voltage output is a fundamental aspect of their performance. Most standard residential solar panels consist of 60 or 72 solar cells connected in series. Each solar cell produces around 0.5 to 0.6 volts. Therefore, a 60-cell panel typically produces about 30 to 36 volts, while a 72-cell