

# HOW MANY WATTS DOES A NEW PHOTOVOLTAIC PANEL HAVE



How much power or energy does solar panel produce will depend on the number of peak sun hours your location receives, and the size of a solar panel. just to give you an idea, one 250-watt solar panel will produce about 1kWh of energy/electricity in one day with an irradiance of 5 peak sun hours. Here's a chart with different sizes of solar panel systems and ???



How many solar panels do I need for 2,000kWh per month? Assuming sunshine hours of 3.5 to 4 per day, 35 to 40 400W solar panels would be enough to generate 2000kWh per month. The level of power a solar panel can generate depends on several factors, making it difficult to determine precisely. How many solar panels does the average UK home need?



How many watts does a solar panel produce? Most residential solar panels on the market today are rated to produce between 250 W and 400 W each. However, the technology is still fairly new and so these products can be quite ???



Types of solar panels. The type of solar panels you get can affect electricity output, since some solar panel types are more efficient than others.. A solar panel's efficiency indicates how well it converts sunlight into ???

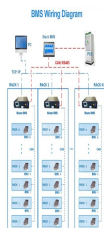


A typical 400-watt solar panel is 79.1 inches long and 39.1 inches wide. It takes up 21.53 sq ft of area. If you have a 1000 sq ft roof, and you can use 75% of that roof area for solar panels, you can theoretically put 34 400-watt solar panels ???

# HOW MANY WATTS DOES A NEW PHOTOVOLTAIC PANEL HAVE



Location. The prevailing weather conditions of where you live will affect how much power your solar panels can generate. Exposure to peak sun hours (PSH) and ambient temperature vary widely from one location to another.. Solar panels installed in a sunny state like California (5 to 7.5 PSH/day) will always have greater output than Michigan (4.0 to 4.4 PSH/day), even if they ???



Individual cells can vary from 0.5 inches to about 4.0 inches across. However, one PV cell can only produce 1 or 2 Watts, which is only enough electricity for small uses, such as powering calculators or wristwatches. Most PV systems have panels in a fixed position that are usually facing directly south in the northern hemisphere???or



Read our buying advice for solar panels to see how much of your power solar panels could generate in summer. How much electricity does a solar panel produce? Household solar panel systems are usually up to 4kWp ???



From the above, we gather that a household with 1-2 people typically uses around 1800 kWh of electricity each year, which means they'd need about 6 solar panels to generate around 1590 kWh. On the other hand, a family of 4-5 people who use about 4100 kWh annually would need ???



Understanding these various factors will help you make informed decisions when installing and maintaining your solar panel system for maximum efficiency and long-term savings. Calculating the Voltage of a 100 Watt Solar Panel. Calculating the Voltage of a 100 Watt Solar Panel. So, you've got yourself a shiny new 100 watt solar panel.

# HOW MANY WATTS DOES A NEW PHOTOVOLTAIC PANEL HAVE



How much energy does a solar panel produce? As mentioned above, the two main factors that determine solar panel energy output are panel power and sunshine. In the UK, a typical solar panel has a power rating of 350W (watts), and a typical day would have four hours of sunlight. The easiest way to estimate output in kWh is to multiply those



Average Solar Panel Output Per Day: UK Guide. In 2015, the international solar power market was valued at a little over £72.6 billion ??? now, it's on pace to be worth over £354 billion by the end of 2022. Renewable energy in the UK is still exhibiting strong growth patterns that are on track to continue well into the future for both domestic and commercial use cases.



Most home solar modules installed in 2023 have a solar panel wattage rating between 350 and 470 watts of power. However, the actual solar panel output depends on factors such as shading, orientation, and hours of sun exposure. A 400-watt panel in a sunny climate can produce about 600 kWh of electricity per year, or approximately 1.6 kWh daily.

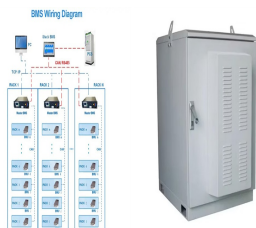


If you know the number of PV cells in a solar panel, you can, by using 0.58V per PV cell voltage, calculate the total solar panel output voltage for a 36-cell panel, for example. You only need to sum up all the voltages of the individual photovoltaic cells (since they are wired in series, instead of wires in parallel).



Residential solar panels typically produce between 250 and 400 watts per hour???enough to power a microwave oven for 10???15 minutes. As of 2020, the average U.S. household uses around 30 kWh of electricity per day or approximately 10,700 kWh per year.. Most residential solar panels produce electricity with 15% to 20% efficiency.Researchers are ???

# HOW MANY WATTS DOES A NEW PHOTOVOLTAIC PANEL HAVE



Now you can just read the solar panel daily kWh production off this chart. Here are some examples of individual solar panels: A 300-watt solar panel will produce anywhere from 0.90 to 1.35 kWh per day (at 4-6 peak sun hours locations).; A 400-watt solar panel will produce anywhere from 1.20 to 1.80 kWh per day (at 4-6 peak sun hours locations).; The biggest 700 ???



What is a 500-watt solar panel? A 500-watt solar panel has a wattage rating of 500 watts under Standard Test Conditions (STC). STC is an industry standard that involves testing panel performance in a lab under 1,000 lumens/m<sup>2</sup> of light, and at a temperature of 77°F (25°C). It indicates the power output you can expect from a solar panel under



Most home solar panels that installers offer in 2024 produce between 350 and 450 watts of power, based on thousands of quotes from the EnergySage Marketplace. Each of these panels can produce enough power to run appliances like your TV, microwave, and lights. To power an entire home, most solar panel owners need 17 to 30 solar panels.. The amount of ???



Already know how much electricity your home needs in Watts? Energy companies use TDCVs to work out quotes for new customers, so that when you're shopping around, you can see like-for-like comparisons. If you've got a 1 kW solar panel system on your roof, then it could power your cup of tea with about 10 minutes of sunlight.



Step-3 Calculate required Solar Panel Capacity: Perform calculations using this formula- Required PV panel wattage (Watts) = Average Daily Energy Consumption (kWh) / Average Daily Sunlight Exposure (hours)  
Required solar panel output = 30 kWh / 5 hours = 6 kW.

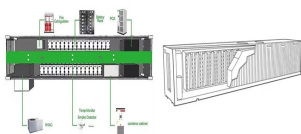
# HOW MANY WATTS DOES A NEW PHOTOVOLTAIC PANEL HAVE



On average, a standard residential solar panel with an output rating of around 250 to 400 watts. If your home has six hours of sunlight daily, you can expect to generate approximately 546 to 874



Your solar panel needs; Your usable roof area; Solar panel dimensions; Photovoltaic cell efficiency. So, for example, if you have a small roof, it might be a good idea to invest in fewer highly efficient panels. Typically, the efficiency of solar panels ranges from 15-20%, which is already factored into the power rating shown in the panels.



For instance, the 100-watt solar panel from our example has an  $I_{mp}$  rating of 5.62 Amps. This means that when this solar panel is producing 100 Watts of power under Standard Test Conditions, It will be generating 5.62 Amps of current.



This is called power rating and it's measured in Watts. Solar panel power ratings range from 250W to 450W. Based on solar sales data, Why New York Loves SunPower Solar Panels New York loves its Yankees ??? and its Sunpower solar panels. A recent review of the Solar platform showed that homeowners in New York state



The power generated by a solar panel is measured in watts (W), which correspond to the panel's optimum sunshine and temperature conditions. The new panel sizes, up to 2.4m long and 1.3m broad, are based on the larger 180 and 210mm wafer (based silicon cells are fabricated from slices of either single-crystal or multi-crystalline silicon

# HOW MANY WATTS DOES A NEW PHOTOVOLTAIC PANEL HAVE



A 12v 150 watt solar panel will produce about 18.3 volts and 8.2 amps under ideal sunlight conditions. (inc. 1kw/m<sup>2</sup> of sunlight intensity, no wind, and 25 °C temperature). The above values are based on DC (Direct current) output, but to run most of the household appliances we need AC (Alternating current)



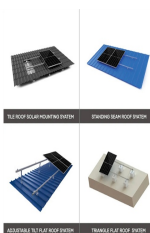
400-watt solar panels are photovoltaic (PV) panels that can generate up to 400 watts of instantaneous electrical energy under ideal Standard Test Conditions. Standard Test Conditions (STC) are specific conditions used to measure solar panel performance, including bright sunlight, a panel temperature of 25 degrees Celsius, and a particular angle of sunlight.



Cell Count vs Wattage. When we discuss output of the solar panel, we usually use it's wattage. For residential applications, a typical solar panel is about 260 ??? 270 watts, meaning that in perfect conditions that solar panel could produce 260 watts of power in a given instant (for reference, an LED light bulb uses about 10 watts).



The higher the wattage, the better energy production efficiency your solar panels will have! These solar panels can range between 400-600 dollars, depending on size, wattage, and solar panel producers in your country. Are you planning to compare the current electricity cost of your house to see whether it's worth shifting to solar power? You're

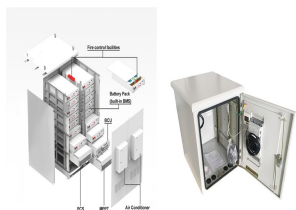


Household solar panel systems are usually up to 4kWp in size. That stands for kilowatt "peak" output ??? ie at its most efficient, the system will produce that many kilowatts per hour (kWh). A typical home might need ???



# HOW MANY WATTS DOES A NEW PHOTOVOLTAIC PANEL HAVE

---



Some solar brands use half-cells with a higher efficiency, but the overall solar panel size does not change. They have 120, 132 or 144 half-cells in the same space (instead of 60, 66 or 72 full



At this point in the day, the clouds had rolled in, so my watt meter measured an output of 24.4 watts from my 100 watt solar panel. As you can in the photo, you can also use a power meter to measure solar panel amps (1.86A) and voltage (13.14V).