

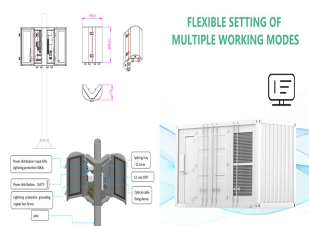
HOW MANY WATTS DOES PHOTOVOLTAIC PANEL PRODUCE PER YEAR



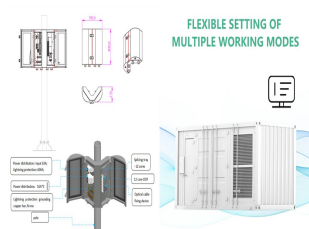
How much power does a solar panel produce? Most solar panels installed today have an output of 370 to 400 watts of power per hour in ideal conditions. Commercial and utility-scale solar installations use more powerful 500-watt solar panels. The output of a solar panel is often referred to as the solar panel's size.



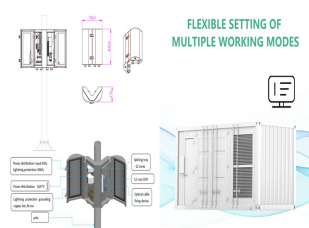
How much electricity does a 350W solar panel produce? The higher the wattage of a solar panel, the more electricity it can produce. The output will also be affected by the conditions, such as where you live, the angle of the roof, and the direction your home faces. A 350W solar panel will produce an average of 265 kilowatt hours (kWh) of electricity per year in the UK.



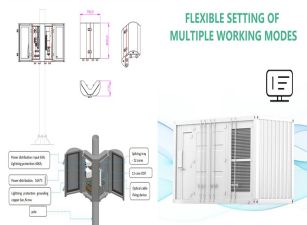
How many kWh can a 100 watt solar panel produce a day? Here's how we can use the solar output equation to manually calculate the output: $\text{Solar Output (kWh/Day)} = 100\text{W} \times 6\text{h} \times 0.75 = 0.45 \text{ kWh/Day}$ In short, a 100-watt solar panel can output 0.45 kWh per day if we install it in a very sunny area.



How much electricity can a 430 watt solar panel produce? Solar panels are usually around 2m², which means the typical 430-watt model will produce 372 kWh across a year. A solar panel system will need space on either side, so finding out your roof's area is only one part of working out how much solar electricity you can generate, but it's a great first step.



Do solar panels produce more electricity than you can use? Your solar panel system might produce more electricity than you can use, because you can (usually) only use the electricity it produces in real time. This means if you're out of the house during the day, especially in the summer when solar panel output is high, you might not be able to use all the electricity it generates.



Example: What Is The Output Of a 100-Watt Solar Panel? Let's look at a small 100-watt solar panel.

To calculate the power output of a solar panel in watts, multiply the panel's rated capacity (in watts) by the average daily sunlight hours and the efficiency factor. For example, a 300-watt panel with 5 hours of sunlight and 80% efficiency would produce 1,200 (or 1.2 kilowatt-hours) daily. How Many Solar Panels to Produce 30 kWh per Day?



Now let's divide the 400W wattage by this area to get the solar output per 1 square foot: Tesla Roof Panel Watts Per Square Foot = $400W / 21.29 \text{ Sq Ft} = 18.79 \text{ Watts Per Square Foot}$. We have the result: Tesla roof panels produce 18.79 watts per square foot. Compared to the 17.25 watts per square foot, they produce 8.9% more electricity. That



How Many kWh Does a Solar Panel Produce per Year? Many solar panels are rated to give 250 to 400 watts per hour. Domestic solar systems have between 1 kW and 4 kW. Take 250 multiplied by 5 hours, and then it equals 1250 watts-hours or 1.3 kilowatt-hours. This result shows that it produces 400-500 kWh.



A final conversion will tell us how many kWh the solar panels produce in a year: multiply 43.5 by 365 days, and you get 15,800 kWh of electricity produced annually by 30 premium, 290 W panels. Since the average American family uses about 10,600 kilowatt hours of electricity per year, that would be more than enough energy to run your home on solar power.

HOW MANY WATTS DOES PHOTOVOLTAIC PANEL PRODUCE PER YEAR



Each solar panel system is different a?? different panels, different location, different size a?? which means that calculating the "average" output per day depends on many factors. However, the majority of private-use solar a?|



A 350W solar panel will produce an average of 265 kilowatt hours (kWh) of electricity per year in the UK. For context, a kilowatt hour is used to measure the amount of energy someone is using; you'll often find it on your a?|



Now you can just read the solar panel daily kWh production off this chart. Here are some examples of individual solar panels: A 300-watt solar panel will produce anywhere from 0.90 to 1.35 kWh per day (at 4-6 peak sun hours locations).; A 400-watt solar panel will produce anywhere from 1.20 to 1.80 kWh per day (at 4-6 peak sun hours locations).; The biggest 700 a?|



Here's a quick breakdown of how much energy different households in the UK usually use and how much solar power their panels can produce:
Household Size a larger household with 4-5 people using 4100 kWh each year would need a 5 kWp system with 14 panels to produce a?|



A typical American household would need around 10,000 kWh per year. A 20 to 30 panel system should generate enough power to cover annual energy needs. The optimal solar panels produce 250 to

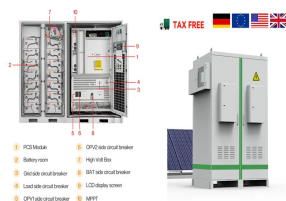
HOW MANY WATTS DOES PHOTOVOLTAIC PANEL PRODUCE PER YEAR



Use our solar panel calculator to find your solar power needs and what panel size would meet them. $\text{required panels} = \frac{\text{solar array size in kW} \times 1000}{\text{panel output in watts}}$. Typically, the output is 300 watts, but this may vary, so make sure to double-check! Number of panels needed assuming your input power output per panel. Required area.



That means solar PV (photo voltaic) panels produced about 3% of the UK's electricity last year. Now, that may not sound like much, but remember in 2004 the number of gigawatt hours generated by solar was just four. an average 350W single solar PV panel can potentially generate 350 watts of power per hour, or 0.35(kWh). now we know how



Residential solar panels typically produce between 250 and 400 watts per hour??enough to power a microwave oven for 10a??15 minutes. As of 2020, the average U.S. household uses around 30 kWh of electricity per day or approximately 10,700 kWh per year.. Most residential solar panels produce electricity with 15% to 20% efficiency.Researchers are a?|



For example, a 6.6 kW solar system typically consists of 20 panels each delivering 330W of power. Solar Panel Wattage. Divide the average daily wattage usage by the average sunlight hours to measure solar panel wattage. Moreover, panel output efficiency directly impacts watts and the system's overall capacity.



Under typical UK conditions, 1m 2 of PV panel will produce around 100kWh electricity per year, so it would take around 2.5 years to "pay back" the energy cost of the panel. PV panels have an expected life of least 25 to 30 years, so a?|

HOW MANY WATTS DOES PHOTOVOLTAIC PANEL PRODUCE PER YEAR



To fully power an average home using 11,000 kWh per year, a typical solar power system will need between 21-24 panels of 320 watts each. a standard 250-watt solar panel would produce 1.5 kWh



We will teach you how you can adequately estimate how many kWh per day does a 5 kW system produce. Depending on how much sunlight you get (solar irradiance), a 5kW solar system can generate anywhere from 15.00 kWh to 22.50 kWh per day. That's 5,400 kWh to 8,100 kWh per year. In short, 5kW can produce more than \$1,000 worth of electricity



How much electricity does a solar panel produce? Household solar panel systems are usually up to 4kWp in size. That stands for kilowatt "peak" output a?? ie at its most efficient, the system will produce that many kilowatts per a?|



Want to know "how much energy does a solar panel produce?" and how many solar panels you need (solar panel output)? How much solar power do I need (solar panel kWh)? To figure out how many kilowatt-hours (kWh) your solar panel system puts out per year, you need to multiply the size of your system in kW DC times the .8 derate factor



If you pay 20 cents per kWh (14600 x .20), you will save \$2,920 per year having solar. If you pay 30 cents per kWh (14600 x .30), you will save \$4,380 per year. If you don't use half of the energy you produce, and your rate schedule sells energy for 10 cents per kWh, you would receive \$720 per year.

HOW MANY WATTS DOES PHOTOVOLTAIC PANEL PRODUCE PER YEAR



Solar panels generate electricity during the day. They generate more electricity when the sun shines directly on the solar panels. Figure 1 shows PV generation in watts for a solar PV a?|



Panels should be tilted at an angle equal to your location's latitude. In Ireland, the ideal tilt angle is around 36 degrees. How much electricity do solar panels generate per square metre? One square meter of silicon solar panels can generate approximately 150 watts of power on a clear, sunny day.



A homeowner installs a 400-watt solar panel and expects about four peak sun hours in a day. That means this panel would produce 1,600 watt-hours of electricity per day. Electricity is usually measured in kilowatt-hours, so you a?|



Power of Panel (Watt Peak): Solar panels are marked with watt peak (Wp), and this is the amount of output the panels should produce in ideal conditions. Your solar panel will give more output if it has a higher watt a?|



However, one PV cell can only produce 1 or 2 Watts, which is only enough electricity for small uses, such as powering calculators or wristwatches. PV cells are electrically connected in a packaged, weather-tight PV panel PV cells and panels produce the most electricity when they are directly facing the sun. PV panels and arrays can use

HOW MANY WATTS DOES PHOTOVOLTAIC PANEL PRODUCE PER YEAR



A 400-watt solar panel will typically produce 340 kilowatt-hours (kWh) per year in the UK. If you get 10 of these panels installed, it follows that they'll usually generate 3,400kWh a?? which is the average UK home's annual a?|



To convert to the standard measurement of kWh, simply divide by 1,000 to find that one 400W panel can produce 1.75 kWh per day. How much energy does a solar panel produce per month? A 400W solar panel receiving 4.5 peak sun hours per day can produce 1.75 kWh of AC electricity per day, as we found in the example above.



Besides, how many watts a solar panel can produce is represented in a theoretical power production, which means it is a figure depending on the ideal sunlight and temperature conditions. Average household solar panels on today's market offer power output ratings expanding from 250 to 400 watts, you can choose from freely according to your power requirement and anticipated a?|



2.58 kilowatt-hours per day x 30 = 77.4 kilowatt-hours per month. How much energy does a solar panel produce per year? And finally, we'll find how much energy our solar panel produces per year. Just take that same daily production we found before and multiply it by 365. 2.58 kilowatt-hours per day x 365 = 941.7 kilowatt-hours per year



If you have 12 solar panels with a power rating of 350W each, your solar panel system will produce an average of 3,180 kWh of electricity per year. This is calculated by multiplying the number of panels by the average output per panel: 12 x 265W = 3,180kWh for a very rough-and-ready estimate that doesn't take into account all the factors listed in this article a?|



To calculate the electricity consumption of your house or office, follow these simple steps: List your devices or appliances that consume electricity.; Find out the energy consumption per hour of each device a?? let's say 40 W for TV, 6 W for router, 1,000 W for AC, and 8 W for each light bulb.; Approximate the number of hours the device is used a?? multiply a?|