

# HOW MUCH DOES IT COST TO EXPORT A SOLAR BRACKET PER MW



A 5 MW solar plant is massive! In ideal conditions, it can power up to 1,250 homes. Or meet the complete electricity requirements of several businesses and industries. A business can set up a 5 MW solar plant to use ???



It's owned by the Bluefield Solar Income Fund, has a 49.9 MW capacity, and powers around 14,000 homes. How much does a solar farm cost? The cost of a solar farm can vary from around £500,000 for small community farms, to over £50 million for large scale solar farms. The total cost depends first on the obvious factor: the size of the solar farm.



Mounting structures: Mounting structures, which support the solar panels, can cost between \$0.10 and \$0.25 per watt, or \$150,000 to \$450,000 for a 1 MW solar farm. Inverters : Inverters convert the direct current (DC) ???



How much does it cost to build a 1 acre solar farm in the UK? Building a 1-acre solar farm in the UK varies in cost. It depends on the site, solar technology, and project size. Costs can be from £500,000 to £1 million per megawatt. What is the UK government policy on solar farms? The UK government supports solar farms and renewable energy.



To give you an idea of how much sunlight matters, let's take an example: if you have a 3 MW solar power plant and each hour receives about 250 watts per square metre (based on average irradiation data), then with around ???

# HOW MUCH DOES IT COST TO EXPORT A SOLAR BRACKET PER MW



The initial costs to build a 1 MW solar farm range from \$900,000 to \$1.3 million, with solar panels and installation making up the bulk of these costs. Ongoing annual costs for a solar farm include 1-3% of total project costs for maintenance, \$50,000-\$150,000 for insurance, and \$0.01 to \$0.05 per watt in taxes.



Average solar farm cost. Building a solar farm costs \$0.90 to \$1.30 per watt, not including the land. A 1-acre solar farm costs \$300,000 to \$500,000 total. A 1-MW solar farm costs \$900,000 to \$1,300,000 to build and powers 100 to 250 homes. The cost to build a solar farm depends on size, type, and location.



10 acres per 1 MW, for the arrays and site development, according to the BetterEnergy Land Use Primer.. Specifically 2.5 acres per 1 MW just for solar panels, plus more land for equipment, 8billiontrees notes. 4-5 acres total for a 1 MW commercial solar installation, but 30+ acres for larger utility-scale projects, Coldwell Solar explains. For ???



The average solar farm costs around ?375,000 per megawatt-hour (MWh) of Il want to bear in mind that larger projects can cost around ?7.5 million to get started if we're looking at a 20 MW capacity on 100 acres of land. This view is especially common among the older generation, with the age bracket of 57-72 seeing them as the most

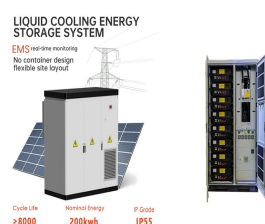


One drawback is the high initial cost of setting up a solar farm, which can range from ???800,000 to over ???1.3 million for a typical installation. This includes expenses such as land acquisition and the cost of solar panels. ???

# HOW MUCH DOES IT COST TO EXPORT A SOLAR BRACKET PER MW



In ideal conditions, a 1kW plant generates 4 units in a day. Thus, a 1000kW or 1 MW plant would generate:  $4 \times 1000 = 4,000$  units in a day  $4 \times 1000 \times 30 = 1,20,000$  units in a month However, it is crucial to note that solar generation can be affected by elements like weather, the orientation of panels, the quality of equipment, location, maintenance, etc.



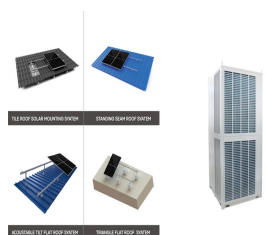
With an average wholesale solar electricity price of \$83 per MWh, a 1 MW solar farm can make about \$150,000 per year. For a deep-down dive, check our article on how much money solar farms make per acre. How Much Does It Cost To Build A Solar Farm? A 1 MW (megawatt) solar farm can cost between \$890,000 and \$1.01 million to build.



How Much a Wind Turbine Costs: A UK Guide for 2024 Compared to other renewable energies for domestic or business use, wind turbine costs vary considerably between manufacturers and installers. Our advice, first of all, is to make sure that this is the right technology for you.



Building a solar farm costs about \$2.40 per watt to install, though the actual costs range from \$0.83 on the low end to \$3.80 on the high end, not including the cost of land. By acreage, building a solar farm costs between \$400,000 and \$500,000 per acre. If you live on a large plot of land, consider building a solar farm as a new business venture.



As much as you need to know how much a 1-megawatt solar farm makes, you also need to know How much it costs to build a 1mw solar farm.. We typically cost to build solar farm installation between \$0.90 and \$1.20 per watt.. So, we can say that installing a 1 MW solar panel farm costs between \$900,000 and \$1,200,000.. We can get all these calculations from ???

# HOW MUCH DOES IT COST TO EXPORT A SOLAR BRACKET PER MW



Solar panel brackets. Solar panel inverter. Solar panel brackets. Installation i.e. labour costs of the installer. Cost of the solar battery storage system (although this is optional). Short answer: the average UK cost of a new domestic solar install is somewhere between ?5,000 and ?10,000. How much is a single solar panel in the UK?



Setting up a solar farm can cost between INR 6.5 crores to INR 7.38 crores per MW. This equals about \$1.06 per watt. This figure is in line with the cost per watt for solar panels in India, helping future developers plan. India's initiative of building about 42 solar parks helps reduce logistical challenges. Solar farms have low yearly



Floating Photovoltaic System Cost Benchmark: Q1 2021 Installations on Artificial Water Bodies, NREL Technical Report (2021) U.S. Solar Photovoltaic System and Energy Storage Cost Benchmark: Q1 2021, NREL Technical Report (2021) Find more solar manufacturing cost analysis publications. Webinar

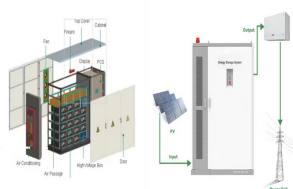


How much does a solar tracker cost? The cost of single-axis solar tracking is ?0.85 (or \$1.08) per watt. Based on this estimate, here is how much it would cost to mount a typical solar PV system on a single-axis tracker, ???



Due to economies of scale, larger solar farms tend to have a lower cost per watt than smaller projects. Location Of The Solar Farm. The location of the solar farm can affect the construction cost. How Much Electricity 1 MW Solar Farm Can Produce? A 1 MW solar farm is not a small-capacity solar power system; it can produce an impressive

# HOW MUCH DOES IT COST TO EXPORT A SOLAR BRACKET PER MW



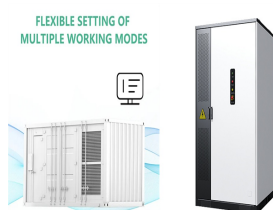
1 mw solar power plant cost, how much acre land required, investment models, return on investment, profit and complete detail in India. states that "Now anyone can generate electricity through solar power system and surplus ???



The cost for a commercial wind turbine in the UK ranges from ?1.3 million to ?2 million per MW installed, not including acquisition of the land. These costs include installation, connection to the UK grid, and often any required maintenance over the lifespan of the system. Offshore wind turbines are, understandably more expensive per MW



We break down upfront costs, operational expenses and the potential for long-term savings. Dive into how factors like installation size, panel type and location affect prices, and learn about ???



Case Study: solar panel installation for an average UK home ??? House type: Semi-detached ??? Solar panels: polycrystalline 4kW ??? Number of panels: 10-14 ??? Solar panel cost, including installation: ?7000.00 (Actual price ???



A 4kW solar panel system is suitable for the average home in the UK and costs around ?5,000 ??? ?6,000.; The estimated average yearly savings you can expect with a solar panel system range from ?440 to ?1,005.; If you install a 4kW solar panel system, you will break even on your investment in about 8 years. Since solar panels have a lifespan of about 25 years, you will be ???

# HOW MUCH DOES IT COST TO EXPORT A SOLAR BRACKET PER MW



Let's look at a 5MW solar farm in Wiltshire and dig further into these costs. Running a large-scale solar farm usually costs around 1% of the initial startup costs per year, which might seem considerable. But when you account for the fact that a single 3.5MW wind turbine costs upwards of ?174,000 to maintain, it's certainly less than the alternative.



Key Components of a 10 MW Solar Power Plant. Setting up a 10 MW solar power plant involves several critical components, each playing a specific role in ensuring the plant's efficiency and effectiveness. Below is a detailed look at these essential parts: Solar Panels. Solar panels are the most visible and crucial components of a solar power plant.



Due to the national average of four peak sun hours per day, a 5 MW solar plant would produce 6000 MWh per year. As a result, a 5 MW Solar Plant can generate annual revenue of between Rs. 1.5 and 1.75 crores. You might also be interested in this article: How Much Electricity Does a 1MW Solar Power Plant Produce in a Month?



The power of a 1 MW solar plant to meet the needs of big factories and hospitals shows how important solar energy is. Fenice Energy turns these insights into real plans. These plans help important places run while taking care of the environment. To set up a 1 MW solar system, you need almost 100,000 square feet.