

HOW MUCH STORAGE SPACE CAN BE INSTALLED



How much storage do I need to install Windows 11? Microsoft states that you need at least 64GB of storage to install Windows 11. Knowing the official requirements is a good starting point, but it's worth noting that you'll likely need more space for updates, apps, files, and other data. It's recommended to have more space than the minimum requirement.



Does Windows 11 require more storage space? Yes, Windows 11 may require more storage space compared to Windows 10 due to its newer features and updates, although the initial space requirements are somewhat similar. After installation, how much disk space does Windows 11 typically use?



How much space does Windows 11 need? According to Microsoft, Windows 11 requires a minimum of 64 GB of storage space. This means that your computer's SSD or hard drive should have at least this amount of free space for the operating system installation. However, keep in mind that this requirement only pertains to the base installation of Windows 11.



How much storage do I need for Windows 10? Regarding storage, the base requirement is a 64 GB or larger storage device. It should be noted that over time, updates and system restore features will consume additional storage space. Microsoft's reserved storage feature ensures that critical updates have allocated space to avoid impacting performance.



Does Windows 11 take up more space than 64 GB? After installation, Windows 11 can take up more space than the initial 64 GB required due to system updates and temporary files. Can I install Windows 11 on a device with exactly 64 GB of storage?

HOW MUCH STORAGE SPACE CAN BE INSTALLED



How much space does Windows 11 take in C drive? Although it is not known how many gigabytes of space Windows 11 will consume on drive C, a general generalization may be made: a fresh installation of Windows 11 will take up around 27 GB of space on drive C. The vast majority of the files are system files or system reserved files in some way.



Windows 10 needs a minimum hard disk space of 16 GB for 32-bit OS and 20 GB for 64-bit OS. Windows 11 needs a 64 GB or larger storage device. The storage space recommendation is only for the OS



There are tools available online that can help you determine the size of the Windows 10 installation, along with the space needed for updates and apps. These can provide a more personalized estimate based on your usage. Step 5: Assess Your Current Storage Space. Finally, compare your current storage space with the Windows 10 requirements.



Most people simply install some utility apps on their computer, with the total size leading up to 30-35 GBs. In such cases, a 100-150 GB size for the C drive should be enough. Servers don't usually need a lot of storage space, and you can easily modify it in the future. So I would recommend a thinly provisioned 60-100 GB space.

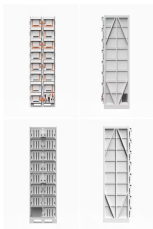


How Much Space Does Windows 10 Need? At launch, Windows 10 was smaller than its predecessor, Windows 8. The size of your hiberfil.sys file relates directly to the amount of installed system RAM. It can occupy up to 75% of that amount, too. For instance, if you have 8GB RAM installed, the hiberfil.sys file could use up to 6GB of storage

HOW MUCH STORAGE SPACE CAN BE INSTALLED



On average, it may consume around 10-15% of the total storage, leaving you with around 217-230GB of usable space. Pre-installed Apps and Bloatware: These updates can consume additional storage space over time. Redundant and Temporary Files: Temporary files, caches, and unnecessary data accumulated by applications can take up space on your



Finally, click the Memory tab, and you will see how much memory you have next to Physical Memory. Open a Finder window. You can do this by clicking the half-blue, half-gray face icon in your Dock. Or you can click any empty space on your desktop and press the Command + N keys on your keyboard at the same time. Then go to the Applications folder.



29 You can now see the size of each partition and how much space is available. The first /dev/fuse in the list = Fire TV Stick 4K onboard storage. You will see that I only have 415MB left of onboard storage. The second /dev/fuse in the list = external storage that may be used for media files, etc.



This type of user needs as much storage space as possible, and a top-shelf phone to go along with the big bytes. If you're thinking of going with an iPhone, we'd urge you to consider the 512GB



Many users have gone to install iOS 18 onto iPhone or iPadOS 18 onto iPad and discovered they don't have enough storage available to do so. So much free storage do you really need? That answer depends, but generally speaking aim to have around 20GB of free storage available to be able to install a major update to iPhone or iPad, like iOS 18.

HOW MUCH STORAGE SPACE CAN BE INSTALLED



This type of user needs as much storage space as possible, and a top-shelf phone to go along with the big bytes. If you're thinking of going with an iPhone, we'd urge you to consider the 512GB



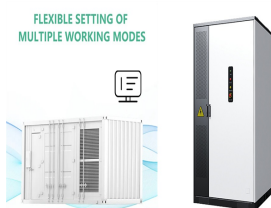
Kali has a lot of customization that can be done during the package selection part of installation. Specifically, there are a total of 20 ways to configure your system during package selection. To help give an idea of what storage size someone should look to have for their preferred packages, we have created this documentation reference page. In general, a disk size of about 60GB will a?]



If you are concerned about the storage space on your PC for Windows 11, you can reduce the size of the system files so the installation consumes less space. This can be achieved before, after, or during the installation of Windows 11. [How to Reduce Windows 11 Install Size Before Installation](#)



This tutorial will show you how to find the storage space size each installed app is using in Windows 11. Option One: Find Storage Space Usage Size of Each Installed App in "Installed apps" Settings Option Two: Find Storage Space Usage Size of Each Installed App in "Advanced options"



i wouldn't download any more software to fix an issue with storage space left on your drive. no offense u/allswright.Windows 10 includes many different tools to clean excessive caching and downloaded updates/files without adding in another piece of software that will only take up a few more of those left over essential Gigabytes. first get your drive in order with the windows tools, a?]

HOW MUCH STORAGE SPACE CAN BE INSTALLED



the cc desktop app takes about 100mb on your os drive. each program takes space but can be installed on other (non-network) drives. each production file takes space but they can be stored anywhere. nothing is on an adobe computer and not stored locally on your computer. and doing that (saving on



What's Taking up All My Storage? Windows 10 and above offers some insight into what could be installed on your system and therefore taking up so much room. Go to Settings > System > Storage to view the total space you have available, along with what space has been used across different categories.



The majority of a Roku device's storage is used for channels and apps, with a limit to how many can be installed depending on the device's storage capacity. In this article, I'll explain the storage space available in Roku devices, addressing the limitations and impacts of storage capacity on your streaming experience.



Hey @realminkimouse you can continue to use Origin for the time being. As for the install size, well the EA app takes up very, very little space on your system. After installation space it takes up will be dependent on what games you have installed. Darko



a?+-i,?Reading Time: 2-5 minutes: d??>>Supported System: Windows 10: d???a??d??>>Suitable Users: All users, including beginners: i,?Page Content: i,?How Much Disk Space Does Windows 10 Take. i,?What Is the Ideal Disk Space for Windows 10. i,?How to a?|

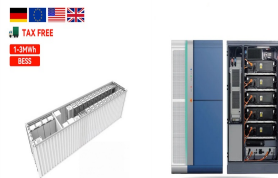
HOW MUCH STORAGE SPACE CAN BE INSTALLED



Amount of memory installed: The amount of memory currently installed on your computer. See Verify the amount of memory to install.. Maximum memory allowed: Subtract the amount of memory already installed from the maximum amount supported by the system to determine how much memory you need.



In newer versions of Windows, you can see right under the drive listing how much free space is left on it, as well as the total size of the drive, in a format like this: Local Disk (C:) [storage space indicator] 611 GB free of 931 GB. If a?]



According to Microsoft, you need at least 64 GB of free storage space on your computer to install Windows 11. Yes, it is possible to update your PC to Windows 11 with 64 GB of storage but, there's a risk of the installation process getting hampered if your device doesn't have sufficient memory. To be clear, it is just the bare minimum space



2. Spare Space in the Case. The available space inside your case also limits the number of hard drives that you can install on the computer. You need to ensure that there's enough space to mount them because you can't leave the drives hanging in the air. Besides, you should seat them properly to avoid bad sectors and ensure optimal operation.



Let's see what you can do to make your Windows 11 install in less space. How Much Space Does Windows 11 Take? What Windows 11 needs and. It's reasonable to believe that every new version of Windows gets bigger. New things on top of old things should make Windows 11 use more space, right? "Additional storage space might be required to

HOW MUCH STORAGE SPACE CAN BE INSTALLED



Note: If it's been fewer than 10 days since you upgraded to Windows 10, your previous version of Windows will be listed as a system file you can delete. If you need to free up drive space, you can delete it, but keep in mind that you'll be deleting your Windows.old folder, which contains files that give you the option to go back to your previous version of Windows.



There are a few ways you can check how much RAM your Windows PC has, including a fantastic third-party option. 1. Use the Task Manager to Check RAM Simply launch the Start menu, search for System Information, click on the Best match, and then scroll to find Installed Physical Memory (RAM) and Total Physical Memory. This should tell you the



There are times when you need to free up some storage space, or you want to find out how much space each app or game installed on your Windows computer is using. If you are looking for this information, there are no obvious ways to find it. You might be tempted to search for programs that help with this task, but there is no need for that.