

HOW TO CHOOSE A SITE FOR PUMPED HYDRO STORAGE



How are pumped hydro energy storage sites ranked? All sites that meet the criteria are then ranked into cost classes A through E (with E double the capital cost of A) and three-dimensional (3D) visualization developed. Our analysis has identified 616,818 low cost closed-loop, off-river pumped hydro energy storage sites with a combined storage potential of 23.1 million GWh.



What are the different types of pumped hydro storage systems? There are several types of pumped hydro storage systems: Pure pumped storage hydropower plants: These facilities use two reservoirs, with the sole purpose of energy storage and generation. Mixed pumped storage hydropower plants: These plants combine a conventional hydroelectric dam with a pumped storage system.



What is pumped hydro storage (PHS)? Pumped hydro storage (PHS) is the largest and most mature technology suitable to store energy. As non-predictable renewable energy penetration increases, PHS is expected to become more and more widespread. Pumped hydro plants are characterized by a round-trip efficiency ranging from 70 % to 80 % .



What is pumped hydro energy storage? Pumped hydro energy storage is a method of storing and generating electricity by moving water between two reservoirs at different elevations. Excess power is used to pump water from the lower reservoir to the upper reservoir during off-peak periods, and the stored water is released back to generate electricity when demand increases.



What are off-River pumped hydro storage sites? Prospective off-river pumped hydro storage sites vary from tens to hundreds of hectares, much smaller than typical on-river hydro energy reservoirs. Tunnels and underground power stations, as assumed in the costing methodology, can be used in preference to penstocks to minimize other surface impacts.

HOW TO CHOOSE A SITE FOR PUMPED HYDRO STORAGE



What is the area requirement for pumped hydro energy storage? Another perspective to understand the scale of the area requirement for pumped hydro energy storage is to compare to the land needed for the associated generation. A solar farm with a daily output of 1 GWh requires an area of land that is about 300 Ha (assuming 18% efficient modules, a capacity factor of 16%, and a module packing density of 50%).



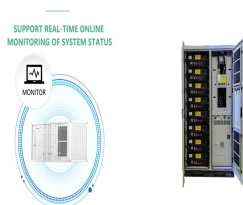
A groundbreaking study led by the University of New South Wales (UNSW) in Sydney suggests that Australia's vast agricultural water reservoirs, commonly used for farm irrigation, could serve as a pioneering solution for ???



In the interests of informed debate, we asked three experts to explain how pumped-hydro storage technology works, where it's already operating and ??? as more and more renewables come into our energy mix ??? ???



Limited Availability of Suitable Sites. Pumped hydro storage systems require specific geological conditions, including a large difference in elevation between the two reservoirs and suitable geology for building the ???



Most existing pumped hydro storage is river-based in conjunction with hydroelectric generation. Water can be pumped from a lower to an upper reservoir during times of low demand and the stored

HOW TO CHOOSE A SITE FOR PUMPED HYDRO STORAGE



Yuba Water Agency Our House Dam Water Bypass System. Bypass system type: Pumped flow Instream bypass requirement: 35 CFS based on 10-year flood event Scope: 100,000 cubic yards of dry sediment removal ???



Table 1 shows a list of pumped hydro storage facilities, their work capacities, initial costs and costs adjusted to 2000 dollars. As can be seen from the table, while the initial costs of pumped water storage may have been ???



In fact, the design of each PHS plant is site-specific, relying heavily on the area's topography, geology, and water availability. A site with ample water supply and favorable terrain is ???



Closed-loop pumped hydro storage located away from rivers ("off-river") overcomes the problem of finding suitable sites. We have undertaken a thorough global analysis identifying 616,000 systems, available on a free ???



The Lewis Ridge Pumped Storage Project, a 287 MW facility located on former mining lands in Kentucky, has received \$81 million in funding from DOE to advance its development. In this POWERHOUSE Q& A with Rye ???

HOW TO CHOOSE A SITE FOR PUMPED HYDRO STORAGE



The sheer scale and duration of pumped hydro energy storage projects leave them vulnerable to inflationary pressures, material shortages and labour constraints, especially in the current global climate.



A pumped hydro energy storage (PHES) site comprises two reservoirs at different altitudes spaced a few km apart and connected with a tunnel or pipe containing a pump/turbine. On sunny and windy days water is ???



Plans have been revealed for a pumped hydro storage scheme in the Highlands which would be one of the largest of its type in the UK. Gilkes Energy says although choosing a site in such a remote location can be ???



Comments frequently pointed to pumped hydro storage as a far more sensible answer. Indeed, pumped storage is currently the dominant???and nearly only???grid-scale storage solution out there. Here, we will take a peek at ???

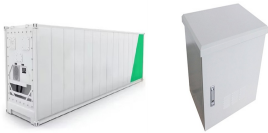


Pumped Hydro Energy Storage (PHES) constitutes 97% of electricity storage worldwide because of its low cost. We found about 616,000 potentially feasible PHES sites with storage potential of about 23 million ???

HOW TO CHOOSE A SITE FOR PUMPED HYDRO STORAGE



Well-located Pumped hydro storage (PHS) can be a cost-effective solution to complement fluctuating renewable energy generation. Effective PHS site selection will improve ???



How Does Pumped Hydro Storage Work? Pumped hydro storage power plants are reversible hydroelectric facilities designed to capture and store electricity until it is required. They use off-peak renewable energy, such as ???