

HOW TO CHOOSE THE MODE OF ENERGY STORAGE AIR CONDITIONER



How to choose the right air conditioner mode? Now that we have looked at all the different modes available in an air conditioner, let us see how to choose the right one for you: The best mode to use depends on your needs and preferences. If you want to save energy, Single User Mode is a great option. If you need to quickly cool down a room, Turbo Mode is the way to go.



Does Eco mode in air conditioner save electricity? ECO mode in an air conditioner does save electricity. When ECO mode is turned on, your air conditioner usually reduces the cooling power to achieve more energy savings. Additionally, your air conditioner may limit the power input, making it feel less powerful.



What are the different air conditioner modes? Most air conditioners have cool mode, dry mode, and fan mode. Some air conditioners come with additional modes such as sleep mode, turbo mode, and ECO mode. Understanding the function of each mode helps you use your air conditioner more effectively.



How does ECO mode save energy? ECO mode is an energy saving function of air conditioners. ECO mode is meant to reduce the electricity consumption of air conditioners without sacrificing too much performance. Some air conditioners have the ability to activate quiet mode for the outdoor unit to further reduce the noise.



Does LG air conditioner save energy? LG's 4-in-1 Mode The LG air conditioner comes with a four-in-one mode that allows you to use the unit as a power saving machine. This mode allows three additional power-saving options: 80%, 60%, and 40% along with 100% default. If the AC is set to 80%, then the AC will work on 80% power, thus saving 20% on energy bills.

HOW TO CHOOSE THE MODE OF ENERGY STORAGE AIR CONDITIONER



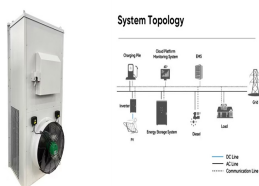
What is the default mode of an air conditioner? An air conditioner operates in cool mode by default. The air conditioner will cool the room based on the set temperature.



The energy rating for a good non-inverter air conditioner should be 3-stars, while that for a good inverter air conditioner should be 5-stars. Therefore, I recommend getting an inverter air conditioner with a 5-star energy ???



Portable air conditioners typically use more energy than window units of similar size. 13. Through-Wall Air Conditioners. Through-the-wall air conditioners operate similarly to window units, using the same basic ???



The GE Profile Series is a whisper-quiet air conditioner. Quiet Mode only puts out 49.3 dBA of sound???less noise than an average household refrigerator makes. The GE Profile Series air conditioner has an Energy ???



Ductless mini-split air conditioners are designed for cooling older homes without ductwork, smaller homes and add-ons where adding ductwork isn't feasible. Some ductless AC models achieve the highest efficiency ratings of any type of ???

HOW TO CHOOSE THE MODE OF ENERGY STORAGE AIR CONDITIONER



Choosing an air conditioner: BTU. When choosing an air conditioner, the first thing to do is to understand the sizing of the machine in relation to the room in which it will be installed. Air conditioners measure their ???



A window air conditioner, also known as an A/C, conveniently cools a single room can be an easy-to-install alternative to a central air conditioning system if you don't need to cool the whole house.. Most window ???



Also called the Eco Mode. It differs from model to model. Whatever be the different mechanism used in power-saving mode across various air conditioners. All essentially helps in "power saving". I will tell you one ???

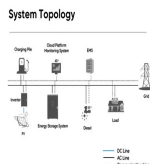


For air-conditioning system with chilled energy storage, many researches focused on study on chilled energy storage technology, such as diffusers for chilled water storage, ice ???



LG Air Conditioner Mode Button ??? How It Functions. On the remote control of an LG air conditioner, you will see a button labeled Mode. the button controls the mode of operation of the unit, switching it from Cool to Dry and Dry to Energy ???

HOW TO CHOOSE THE MODE OF ENERGY STORAGE AIR CONDITIONER



Kooltronic offers innovative cooling solutions for battery cabinets and electrical enclosures used in renewable energy storage systems. Click to learn more. MyKooltronic Account and isolated from airborne contaminants. A ???



Energy-efficient air conditioners use less electricity to cool your home, which can result in lower monthly heating and cooling bills. Additionally, because these systems experience less strain, they typically have a longer lifespan and ???



Choosing the right size reverse cycle air conditioner. The size of an air conditioner refers to its rated heating and cooling capacity output. Products should list size in kilowatts (kW), for example, 3.5 kW. Reverse cycle air ???



Our Ratings: Ease of Use 5/5; Effectiveness 5/5; Portability 4/5; Noise 5/5; Value 5/5 What We Like. Provides powerful heating and cooling ; Combined Energy Efficiency Ratio (CEER) rating of 10.8



Our ultimate guide helps you choose the right air conditioner for your home, covering energy efficiency, room size, smart features and more. Storage Devices; Microphones; Adaptors; Software; Shop All; TECH BLOG;

HOW TO CHOOSE THE MODE OF ENERGY STORAGE AIR CONDITIONER



The cool mode is the most basic and common mode used in air conditioners. As the name suggests, this mode is used to cool the room quickly does this by blowing out cold air at a high speed. This is the default mode that ???



Choosing the right mode for your air conditioning unit is crucial for maintaining comfort, energy efficiency, and indoor air quality. Understanding the different modes available and their respective benefits can help you make ???



Comes with usual air conditioner features like Auto Cleaning, Sleep Mode, and Timer, with four levels of energy-saving controls, putting you in complete control of your energy usage. And with LG's 10-year compressor ???



Battery Energy Storage Air Conditioner BESTic ??? Bergstrom Energy Storage Thermal AC System comes in three versions: air-cooled (BESTic), liquid-cooled (BESTic+) and direct-cooled (BESTic++). The core components, including ???

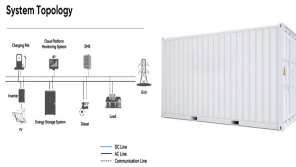


Turn the A/C Unit On and Off and Choose a Mode. Press the power button on the control panel once to turn on the air conditioner. Press the button again to turn off the unit. Once the unit is on, the mode indicator lights tell you ???

HOW TO CHOOSE THE MODE OF ENERGY STORAGE AIR CONDITIONER



Most air conditioners have cool mode, dry mode and fan mode. Some air conditioners come with extra modes such as sleep mode, turbo mode and ECO mode. Heat pumps typically have auto mode and heat mode for ???



5 Tips to Buy an Air Conditioner. Air conditioner: It keeps you cool, calm, and collected. Choosing the right air conditioner that suits your needs can be a challenge whether you're moving into a new apartment that doesn't have one ???



In contrast, air conditioners that are too small will run for too long, trying to reach the programmed temperature and wasting energy. When choosing the right size air conditioner for your home, you need to know the size of the ???