

# HOW TO CONNECT SOLAR PHOTOVOLTAIC PANELS TO ELECTRICAL APPLIANCES



Should I connect solar panels to my house wiring in the UK? Regular maintenance and monitoring of your solar panel system will help ensure its optimal performance and longevity. Connecting solar panels to your house wiring in the UK allows you to harness renewable energy and reduce your reliance on the grid. This step-by-step guide will walk you through the process, ensuring a safe and efficient connection.



How do I connect solar panels to my house wiring? Once you have a clear understanding of the regulations, you can begin the process of connecting your solar panels to your house wiring. This involves several steps, including mounting the solar panels, installing an inverter, connecting the panels to the inverter, and finally, connecting the inverter to your house wiring.



Can a solar PV system connect to a domestic electrical supply? Solar energy, a clean and renewable source of power, is becoming increasingly popular for domestic use. Many homeowners are curious about how they can integrate solar photovoltaic (PV) systems into their existing electrical setup. In this blog, we will guide you through the process of connecting a Solar PV system to your domestic electrical supply.



How do I set up a solar PV system? Putting up solar panels is a big part of setting up your Solar PV System. Here's what you need to keep in mind for mounting and staying safe: Pick the best place on your roof where the panels will get lots of sunlight. Make sure there's no shade covering them. Use strong frames and supports to hold your panels in place.



How do you connect a solar inverter to a house? Once the solar panels and inverter are installed, it's time to connect them to your house wiring. This involves connecting the inverter to your main electrical panel, typically through a dedicated circuit breaker. It's important to follow local regulations and safety guidelines during this step.

# HOW TO CONNECT SOLAR PHOTOVOLTAIC PANELS TO ELECTRICAL APPLIANCES



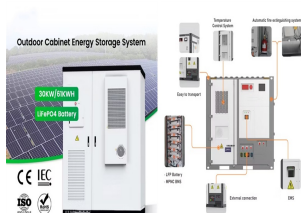
How to wire solar panels together? Wiring solar panels together can be done with pre-installed wires at the modules, but extending the wiring to the inverter or service panel requires selecting the right wire. For rooftop PV installations, you can use the PV wire, known in Europe as TUV PV Wire or EN 50618 solar cable standard.



In conclusion, the solar panel and inverter connection diagram demonstrates the flow of power from the solar panel to the inverter and further distribution to the electrical panel of a building. This connection allows for the utilization of solar ???



2. Connect the Solar Panels to the Inverter. With the panels mounted, it's time to connect them to the inverter. Here's how to do it: Wire Preparation: Strip the ends of the wires coming from the solar panels. Make sure they're clean and free from any damage. Connect Wires: Most solar panels have positive and negative wires. Connect the



To estimate the number of solar panels you need, look at three variables: Solar panel rating, production ratio, and annual electricity usage. Solar panel rating: The electricity (power output) generated by a solar panel when the weather conditions are ideal, measured in watts (W). For the calculations below, we use 400 watts as an average solar



Connecting solar panels to your house wiring in the UK allows you to harness renewable energy and reduce your reliance on the grid. This step-by-step guide will walk you through the process, ensuring a safe and efficient connection.

# HOW TO CONNECT SOLAR PHOTOVOLTAIC PANELS TO ELECTRICAL APPLIANCES



Connect Solar Panels to Inverter and Home Electrical Panel. After securing your solar panels on the roof, the next step is to bring their power down to earth???or more precisely, into your home. This is where the magic happens, as you ???



It functions by converting the DC power generated by solar panels into AC power, aligning the solar energy with the operational standards of modern electrical grids and home appliances. The conversion process involves not only changing the type of current but also precisely adjusting the voltage and current to meet specific energy requirements safely and ???



- TELECOM CABINET
- BRAND NEW ORIGINAL
- HIGH EFFICIENCY

Connection Options: The easiest and safest way to connect your solar generator to your home is to use a generator transfer switch. These small devices are installed to the electrical panel and act as a go-between for ???



430KWH  
48V Cabinet  
48V in 20s

How Does Solar Connect to the Main Panel? Solar panels connect to the main panel or breaker box through wire that first passes through the charge controller and the inverter. Once the inverter converts the current ???



We've covered the key steps for connecting a Solar PV system to your home's electricity. From understanding simple components like solar panels and inverters to the straightforward process of wiring and safe mounting,. We ???

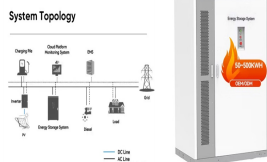
# HOW TO CONNECT SOLAR PHOTOVOLTAIC PANELS TO ELECTRICAL APPLIANCES



Voltage and Wattage. The first step is to ensure the voltage and wattage of the solar panel match the input requirements of your power station. I have written articles that guide you through how to find both the input limits of a power station, and the voltage of a solar panel.. If your solar panel has a voltage too high for the charge controller in the power station, it's not ???



Basic Concepts of Solar Panel Wiring (aka Stringing) Solar panel wiring, commonly referred to as stringing, involves the connection of multiple solar panels to consolidate their output and integrate it into a home's electrical system or a battery for storage. Each solar panel produces a certain voltage and current depending on its size



3. Connect the Solar Panel to the Charge Controller. After connecting the charge controller to the battery, it's time to connect the solar panel to the charge controller. Ensure that the connections are made in the proper sequence according to the manufacturer's instructions. This will allow for optimal energy transfer and utilization. 4.



Electrical Panel: The electrical panel, also known as the breaker box or distribution panel, distributes the electricity generated by the solar panels and integrates it with the utility grid. It allows you to use the solar-generated electricity in your home and can also facilitate the export of excess electricity back to the grid.



Connect the solar panels to the inverter to do this task. Step 5 - Loop in the Batteries. Depending on your system, you'll either connect directly to the power inverter and then into the home system or connect solar panels to the inverter, the batteries, and the home system.

# HOW TO CONNECT SOLAR PHOTOVOLTAIC PANELS TO ELECTRICAL APPLIANCES



Unlock the power of solar energy for your home with our comprehensive guide on connecting solar panels to an inverter and battery. Explore essential components, system configurations, and safety tips that ensure a smooth installation. Follow our step-by-step instructions for wiring and optimizing your setup, while maximizing efficiency and maintenance. ???



Here's what you'll need: A solar panel rated for the amount of power you need An inverter that converts DC power from the solar panel to AC power that can be used by your appliances and lights. Appropriate cabling to connect the inverter to the solar panel and then from the inverter to your electrical system With this basic setup, you'll be able to take advantage of ???



Grid-tie inverters enable solar panel systems to work harmoniously with the existing electrical infrastructure and maximise energy production from renewable sources. Connecting Solar Panels To The Grid. How to connect solar panels to the grid: Line or supply-side connection and load-side connection. Line Or Supply-Side Connection



solar panels can help achieve this. Once you've covered the upfront cost of installing solar panels you can enjoy cheaper bills for years to come. ??? Reduce your carbon footprint By harnessing low carbon solar electricity, a typical home solar panel system could save around 800kg of carbon a year depending on where you live in the UK.



As shown in Fig 1, the PV system incorporates a number of PV modules which convert the energy of solar radiation emitted by the sun into electrical energy by means of the photovoltaic effect. The modules are ???

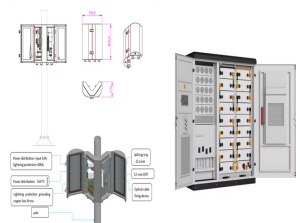
# HOW TO CONNECT SOLAR PHOTOVOLTAIC PANELS TO ELECTRICAL APPLIANCES



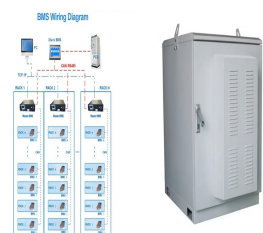
By wiring these panels together, you can create a solar array that generates enough electricity to power various appliances and systems. Solar Panel Basics: Solar panels are composed of multiple photovoltaic cells, which are made from semiconducting materials like silicon. When sunlight hits these cells, it excites the electrons in the material



With improvements in photovoltaic solar panel technology, leaving the electric grid back has never been more accessible. However, before you line the roof of your home or company with bright solar panels, you choose the device that you need to convert solar power into usable power. You can buy the best off-grid inverters online.



PV panels generate DC power and an inverter changes that into usable AC electricity. In this guide, we will discuss how to wire solar panels to an inverter in simple steps. We will also explain the connection procedure for the ???

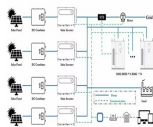
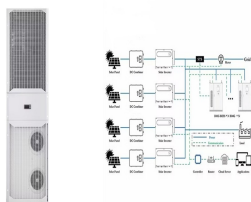


This article is a professional answer from Xindun Power to the question of "how to connect solar panel to home appliances". Most of end users don't know how to use solar power and how to connect solar panel to home appliances. They need AC power to supply for home appliances. Here we will do some explanation and give some instruction.



Figure 2. IV Curve of a solar cell/operation at the Maximum Power Point. Source: PVEducation As you can see, there is a specific voltage and current that allows a solar panel to get to the MPP, but photovoltaic (PV) modules can operate at a ???

# HOW TO CONNECT SOLAR PHOTOVOLTAIC PANELS TO ELECTRICAL APPLIANCES



Now, in this section, we provide you with a step-by-step guide on how to wire solar panels. Connecting a PV connector to your PV wire. Most solar panels come with pre-installed MC4 connectors, which will allow you to ???

30KW solar panel connector



Parallel Connection. Purpose: Increases current while maintaining the same voltage. Materials needed: An MC4 Y branch made for the number of panels you plan on combining. Here is one for combining two, here ???



Sir, I have a solar system installed with inverter 1000W, solar panels 600w, 12w solar inverter hybrid 12v, battery one 12v 150ah, please advise /help may I add in parallel one more battery 12v 150 ah, to increase back up, NO harm to inverter and home appliances of 220 v, like mixer, fan, led bulbs, etc. please advise help thanks and regards.



The process of connecting the solar panels to the batteries involves several key steps. 1. Determine the Voltage of the Solar Panels: Before connecting the solar panels to the batteries, it is crucial to determine their voltage rating. This information can usually be found on the back of the solar panel or in the manufacturer's specifications.



One crucial aspect of installing a solar panel system is understanding how to wire a solar panel properly. In this practical guide, we will walk you through the process of how to hook up solar panels to houses, from ???