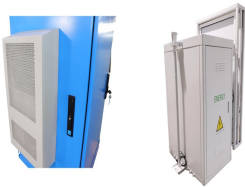
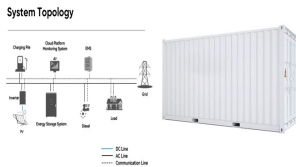


# HOW TO CONNECT SOLAR PHOTOVOLTAIC PANELS TO PLUG BOARDS



But this also increases solar panel needs. Consult with a qualified solar installer to properly size your system based on these variables. While exact solar panel needs vary, planning for 10-15 high-efficiency panels ???



A qualified electrician or solar panel installer will be able to advise you on the best type of system for your property, provide you with a quote, and ensure that the installation is carried out safely and correctly. Once you have chosen your solar panel system and have had it installed, you will need to connect it to the mains.



Parallel Connection. Purpose: Increases current while maintaining the same voltage. Materials needed: An MC4 Y branch made for the number of panels you plan on combining. Here is one for combining two, here is one for three, and here is one for four. For a simple parallel connection, you just need one pair. Steps: Identify Terminals: Locate the ???



On the other hand, if you're connecting 42 x EcoFlow 400W rigid solar panels to 3 x DELTA Pro Ultra Inverters + Home Backup batteries, the diagram will be considerably more complicated.. For solar panel arrays with ???



Step 2: Connect the Solar Panel to the Solar Power Manager. Locate the solar terminals on the Solar Power Manager. They're the other set of green screw terminals. Connect the solar panel leads to the solar terminals. Place the solar panel outside in direct sunlight. Confirm that the red CHG light turns on. Your solar panel is now charging

# HOW TO CONNECT SOLAR PHOTOVOLTAIC PANELS TO PLUG BOARDS



Connect Solar Panels to Inverter and Home Electrical Panel. After securing your solar panels on the roof, the next step is to bring their power down to earth???or more precisely, into your home. This is where the magic happens, as you connect the dots between the panels and your electrical system. Monitoring your solar power system is like



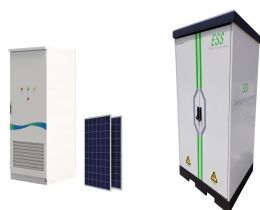
Connecting Solar Panels To The Grid. How to connect solar panels to the grid: Line or supply-side connection and load-side connection. Line Or Supply-Side Connection. Connecting solar panels to the grid can be done through a line or supply-side connection. This involves connecting the solar panels directly to the main electrical supply of your



Connecting Solar Panels in Parallel Wiring solar panels in parallel means connecting the positive terminal of one panel to the positive terminal of another, and then the negative terminals together as well. These connections are made in a combiner box, and the results of this connection are often called a PV output circuit.



However, if you are switching entirely to the solar power, you will have to purchase and install batteries that store the solar power for use at night. Step 3. Connect the solar panels either directly to a power inverter and ???



1. Determine Your Energy Needs. Before you purchase the components to build a solar power system, you need to determine how much electricity you expect to use. To do this, collect your electric bills from the past several months, and look for your average usage per month and year. Plan to purchase a system that will deliver more power than you already ???

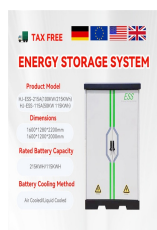
# HOW TO CONNECT SOLAR PHOTOVOLTAIC PANELS TO PLUG BOARDS



But, do you know how to connect solar panels to the grid? You'll need to prepare solar panels and an inverter when connecting the solar PV systems to the grid. The solar panels transform solar energy into DC ???



Plug-in solar panels are small solar energy systems that you can plug into a regular electrical outlet at home. Read more here! Connect to an outlet: Plug the solar panel system into a standard electrical outlet using the provided power cord. Ensure that the outlet is suitable for the system's voltage and current requirements, and



This tutorial shows step-by-step how to power the ESP32 or ESP8266 board with solar panels using a 18650 lithium battery and the TP4056 battery charger module. How much power (mA) does the ESP32+Cam ???



Learn how to connect solar panels to your house's wiring in the UK and start harnessing the power of the sun in an eco-friendly and cost-effective way. Discover the step-by-step process, from choosing the right equipment to ???



How do solar power actually work in the home from solar panels? and doesn't change any of the wiring to the rest of the house. The solar panels connect into your consumer unit as a new dedicated circuit. When the sun shines, electricity flows from the solar power system into your consumer unit. 15.1K Coronavirus Support Boards; Is this

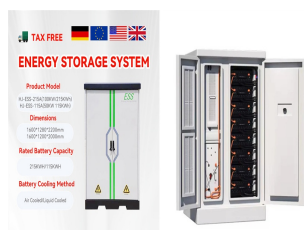
# HOW TO CONNECT SOLAR PHOTOVOLTAIC PANELS TO PLUG BOARDS



To connect solar panels in parallel, you require an additional component known as an MC4 combiner (or MC4 multi-branch connector), this name differs for other types of solar panel connectors. The image above ???



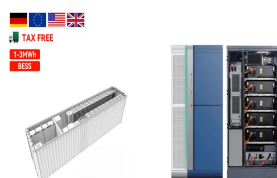
The Solar Panel The Solar Panel consists of solar cells that are made of a semiconductor material. Once the sun's rays meet the solar module, particles in the material are set in motion, creating electricity. which is used to connect the solar to the mains grid. Plug-In Solar 2.24kW (2240W) DIY Solar Power Kit with Roof Mount. Plug-In



It is important to carefully consider factors such as shading, performance variations, and ease of installation when deciding on the wiring configuration for a solar panel system. Connecting Solar Panels to an Inverter. When setting up a solar power system, one crucial step is connecting the solar panels to an inverter.



Plug-in Solar Panel FAQs Do solar panels have to be connected to the grid? Solar panels have to be connected to the grid because the solar inverter changes solar power into grid power. A piece of solar kit sits in between them: the solar inverter. ???



If you're using more than one solar panel, connecting each PV module together and to a portable power station or other balance of Connect Solar Panels to Your Home Circuit Board and Wiring. The electrician will integrate the transfer switch with your main circuit panel. Then, you simply plug in the EcoFlow DELTA Pro for instant home

# HOW TO CONNECT SOLAR PHOTOVOLTAIC PANELS TO PLUG BOARDS



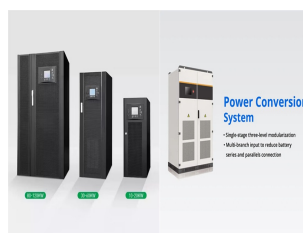
Next, plug the solar panel charging output port of the connector into the DC input port of the Jackery Explorer 2000 v2 Portable Power Station. Then, you can plug the solar panel charging input port of the connector into all the Jackery SolarSaga 200W solar panels. The change-over switch helps you change two to three solar panels in series.



Click above to learn more about how software can help you design and sell solar systems. Basic concepts of solar panel wiring (aka stringing) To have a functional solar PV system, you need to wire the panels together to create an electrical circuit through which current will flow, and you also need to wire the panels to the inverter that will convert the DC power produced by the panels ???



for Solar Panel Installation is an important part of ensuring the success of the installation. The first step is to select the right type of wiring, which should be suitable for outdoor use and be rated for the voltage and amperage of the solar panel system.



Solar Panel Installation. The installation phase is where the rubber meets the road ??? or to be more accurate ??? where the solar panel meets the rooftop. Solar panels should be installed at an angle that catches the majority of the sun's rays and securely fastened so they can withstand harsh weather conditions. Wiring of the Solar Panels



I have been offered a free 40W solar panel: Solar Panels Voltage Output: 17.1V Solar Panels Amperage Output: 2.3A. (It also has a charge controller that I will bypass) The voltage output on the solar panel is compatible, but the amperage output on the solar panel is lower than the Jackery range. Does that matter? Thanks. Reply

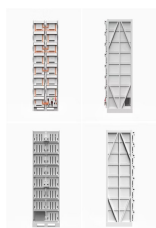
# HOW TO CONNECT SOLAR PHOTOVOLTAIC PANELS TO PLUG BOARDS



The purpose of this article is to give you a basic understanding of the concepts and rules for connecting a solar panel system to the utility grid and the household electrical box or meter. The utility connection for a PV solar system is governed by ???



It is recommended to oversize your solar panel and inverter by 25% to 30% to ensure that you have enough power to meet your energy needs. This will also help you to accommodate any future increase in power consumption. Choosing the Right Inverter. When it comes to connecting a solar panel to an inverter, choosing the right inverter is crucial.



A solar panel wiring diagram (also known as a solar panel schematic) is a technical sketch detailing what equipment you need for a solar system as well as how everything should connect together. There's no such ???



Wiring PV Panel to UPS-Inverter, 12V Battery and 120-230V AC Load. In this very basic solar panel wiring installation tutorial, we will show how to connect a solar panel to the AC load through UPS/Inverter, charge controller. You will ???