

HOW TO INSTALL PHOTOVOLTAIC PANELS ON A TEMPORARY ROOF



Bigger chunks of roof are easier, and cheaper, to install solar panels. Keep in mind that a standard residential solar panel is roughly five and a half feet tall by three feet wide. Pictured below, this 290 to 320 watt solar ???



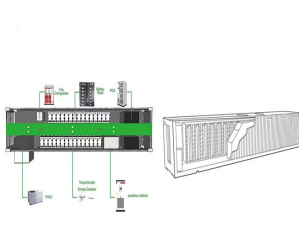
How to install solar panels wiring . Solar panel wiring installation is not overly complicated if you understand basic electricity procedures. First, there is a positive wire and a grounding wire. Most solar components have a ???



Solar panel shingles are a type of solar panel designed to look like traditional asphalt roofing shingles. Solar shingles are made of thin-film photovoltaic cells laminated onto a backing material, thus are less visible on the roof and can provide a more aesthetically pleasing option for some homeowners.



Preliminary Steps for Solar Panel Installation. Before starting with your rooftop solar panel system, make sure to do some key steps. You need to look at how much electricity you use now. Then, you decide on the right solar ???



This step-by-step guide will walk you through the process, from selecting the right type of solar panel roof to installation. Whether you are a DIY enthusiast or hiring professionals, this guide will help you navigate the installation process for an efficient, long-lasting solar system. A successful solar panel installation involves careful

HOW TO INSTALL PHOTOVOLTAIC PANELS ON A TEMPORARY ROOF



Our brand new guide, A Consumer's Guide to Solar Panel Installation, provides you with all the information you need to make informed To install 6 panels on front roof plus 6 panels on the back roof CW birdguard with ???



The size of the solar panel you need depends on your shed's energy consumption. After putting it to the test, we've found that a small setup can suffice for basic lighting and charging tools. Close To The Roof Edge: Installing panels too close to the edge of the roof can make them vulnerable to strong winds and adverse weather conditions



Locate the solar panel wiring: Identify the wiring coming from each solar panel. The wires are typically located at the back of the panels and may be bundled together. Strip the wire insulation: Carefully strip off a small section of the wire insulation, exposing the copper conductors. Be cautious not to cut into the wires.



Panel Installation: Place each solar panel onto the stanchions and connect the plug connections for each panel. Ensure a secure fit by fastening the retaining clips to the rails using screws. Wire Connections: Establish wire connections by linking the array of solar panels to the next one, ensuring that the wiring and connections are correctly installed.



Assessment of Roof Suitability for Solar Panel Installation. Not all roofs, including tiled roofs, are suitable for solar panel installation. To determine if your slate roof is compatible, several factors must be considered. Firstly, assess its structural integrity as solar panels add weight to the roof. If needed, reinforce or repair any weak

HOW TO INSTALL PHOTOVOLTAIC PANELS ON A TEMPORARY ROOF



We would recommend using L brackets for your campervan solar panel installation, as these provide a secure, mechanical fixing to the roof of your campervan. Alternatively, you can use corner brackets to attach your rigid solar panels using adhesive, avoiding the need to drill as many holes in the roof of your van. However, you will still need to drill at least one hole to allow ???



Home renovations don't have to be stressful or excessive, and solar panel installation is neither. Solar Panels Are Low Maintenance. Not only are solar panels easy to install, but they also require next to no maintenance. Once the panels are set up on your roof, you can essentially just forget about them.



3. Attach the Fixing Bracket to the Solar Panel's Mounting Hole. Now that you've aligned them properly attach the fixing bracket to the mounting hole of the solar panel. Repeat this process on the other side of your solar panel. Ensure the bolts' alignment are symmetrical and fix the mounting holes at the same level.

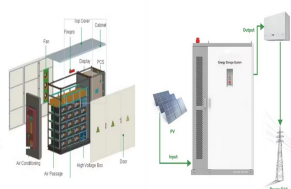


Installing solar panels on your roof can both save you energy costs and reduce your home's environmental impact. Even though there are some DIY solar panel options, installing them is a highly complex project, and you'll still need assistance from an experienced professional. The first step in planning your solar panel installation is



Fitting a conventional solar panel to a flat roof: The solar panel is attached to the roof of the campervan using mounting brackets. These are generally made from plastic. A set of 4 corner plastic mounting brackets will usually be sufficient. ???

HOW TO INSTALL PHOTOVOLTAIC PANELS ON A TEMPORARY ROOF



The first step in the solar panel installation guide is to install the mounts that will support the solar panels. These come in three primary types: pole, roof-ground, and flush mounts . Depending on the chosen mount, you can place solar panels on an RV, a rooftop, or even as a standalone device.



In fact, your roof may be in more need of TLC than the solar panels you want installed on it. So first, a professional surveyor will check your roof and rafters to ensure that a solar panel installation can go ahead safely. The results of the survey may affect the price quoted by your solar panel providers. With that done, the installation can



rafters and integrated into the rest of the roof using a flashing kit to keep the roof waterproof. Flat roofs Solar PV panels on a flat roof will produce more electricity if they can be angled toward the sun rather than laid horizontally on the roof. Solar PV panels on a flat roof are often installed on an A-frame mounting system or on a



As such, it would then make sense to install as many PV panels on the roof as you can (up to 10 panels) and then install the inverter in the garden building. When the electric generation is not being used in the shed it can then go back to the home consumer board through the connecting supply wire and be used in the home.



I'm eventually going to be setting up a solar array on corrugated aluminum roofing, the date for the roof being finished has been pushed back so I'm looking for a cheap way to temporarily install panels to bare plywood roofing with a 25 degree slope. I'm using the the ???

HOW TO INSTALL PHOTOVOLTAIC PANELS ON A TEMPORARY ROOF



By utilizing the open space on your roof, you can take advantage of the sun's energy and convert it into usable electricity. In this section, we will explore the introduction to solar panel roof mounts, highlight the benefits of installing solar panels on your roof, and discuss the factors to consider before installing roof-mounted solar



Optimal energy performance can be achieved through any of these flat roof solar panel installation methods. However, it's important to raise this concern early in the design process. 5. Solar panels on flat roofs may require frequent cleaning.



Ideally, install the inverter on an exterior wall between your solar panel's junction box and the main circuit breaker panel to your house. Some code's will require the inverter and your AC Disconnect switch to be within a certain distance of your electricity meter.



Many factors impact if your home is suitable for installing solar panels, including the type of solar panel being installed, and the orientation and pitch of the roof. " Solar PV (photovoltaic) panels generate electricity from ???

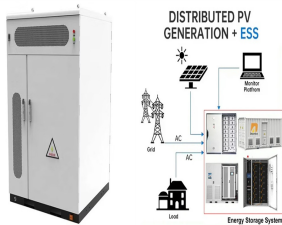


How to Install Solar Panels on the Roof. How you install solar panels is determined by factors like the roof's inclination and area. The installation process might seem to be difficult, but it is straightforward ??? provided you are abreast with the necessary steps. Here is a stepwise description of how to install solar panels on the roof:

HOW TO INSTALL PHOTOVOLTAIC PANELS ON A TEMPORARY ROOF



Photovoltaic (PV) systems are one of the most important renewable energy sources worldwide. Learning the basics of solar panel wiring is one of the most important tools in your repertoire of skills for safety and ???



A contractor and a self-employed roof worker were both given suspended prison sentences and 280 hours of community service when they dropped some of their materials and injured a member of the public. They were both ordered to pay costs of £2,114. Solar panel installation. What you need to know to work safely . HEALTH AND SAFETY



An in-roof solar panel system sits on top of the roof's battens and is then tiled or slated around. It is possible to create a whole roof out of solar panels using an in-roof system. Making the whole roof out of solar panels can be a fantastic ???



3. Make space for the solar panel accessories (solar inverter, cables and solar batteries, if desired), for instance in a plant room. 4. Plan a day for installation. 5. Erect the scaffolding (this can be done by your supplier or by a company you organise) 6. The solar panel mounts will be installed. 7. The professionals will install the solar



The solar PV panels also form part of the roof covering, directly replacing roof tile sections, giving the extra benefit of time saving on installing the roof tiles. Comprehensive installer training is also available, giving contractors the skills and knowledge they need to carry out installations quickly and to a high standard.