

HOW TO INSTALL THE U-SHAPED BRACKET OF SOLAR LIGHT



How to install a solar light at home? The first step in installing a solar light at home is to gather all of the necessary supplies. This includes a solar panel, battery, mounting bracket, light fixture, wiring, and other components. It is important to ensure that all of the components are compatible with each other before beginning the installation process. 2. Choose a Location



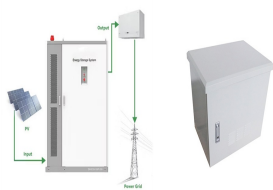
Why should you install a solar panel bracket? The purpose of installing the bracket is to better fix the solar panel. If there is a more convenient and feasible method to fix the solar panel. PVMars will definitely recommend it to you, and effective solutions are based on solar panels' characteristics and your on-site installation environment.



Where should a solar powered floodlight be installed? Ideally the solar panel should be installed south facing and in the sun for as much of the day as possible. This guide will take you through what you need to do to fit your solar powered floodlight safely and securely. Before you start, have a look at the best place to install your solar-powered light.

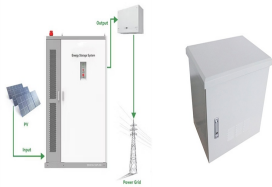


How do I install a security light? Place the bracket into position and screw it flush to the wall. Assemble the security light as required. Fit the light to the bracket and screw it securely on with the fixings provided. With the light securely attached to the wall, read the product fitting instructions and set the light up, adjusting the timer, sensor and solar panel as required.



How do you install solar panels on a roof? They drill through the slate into the rafter using two fixing holes, sealant is applied to the fixing holes and the base of the limpet. The solar limpet is then screwed onto the roof. Rails are then run across the roof and bolted to the limpets, and the solar panels are fixed to these rails (adjustable bracket).

HOW TO INSTALL THE U-SHAPED BRACKET OF SOLAR LIGHT



How do you install solar PV on a slate roof? See a case study of a tiled roof here To install solar PV on a slate roof, our installers would use solar limpets. They drill through the slate into the rafter using two fixing holes, sealant is applied to the fixing holes and the base of the limpet. The solar limpet is then screwed onto the roof.



iJDMTOY automotive lighting was founded in 2004 and is now one of the largest car & truck LED lighting retailers in the United States. Our company is located in the suburb of Los Angeles, California, with the most complete LED lights and accessories for all cars and trucks including LED headlights, tail lamps, LED daytime running lamps, foglamps, off-road truck lightings, ???



Discover our range of LED J-Shape surface mount brackets for light fixtures. Featuring inline bracket slots for seamless run connection and paintable finish. Spec Sheets Ordering Guides Install CAD Files Brochures U Brackets offer a taller reveal to hide the fixtures and mounting hardware U Brackets offer a taller reveal to hide the



Before you start installing your solar lights, it's important to make sure you have everything you need. Here's a checklist of what to gather: Shovel or Spade: If you're planning to install the lights in the ground, you'll need something to dig the holes for the stakes. Solar Lights: Obviously, you'll need the lights themselves. Make



You can also connect an external eufy solar panel (with an adapter for the external solar panel) and place the external eufy solar panel at a location that can receive direct sunlight for a minimum of two hours on a daily basis. Location Height For optimal performance and field of view, it is highly recommended to mount the Solar Wall Light Cam S120 between 1.8-2.5m / 5.9-8.2ft ???

HOW TO INSTALL THE U-SHAPED BRACKET OF SOLAR LIGHT



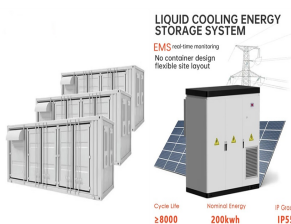
Trackers are designed to optimize solar panel performance, adjusting the mount to face the sun. But the benefits are not enough to offset the cost. It is more practical to install additional solar panels than install a tracker. Conclusion. Installing solar panel brackets is no longer just for professional installers, as anyone can do it.



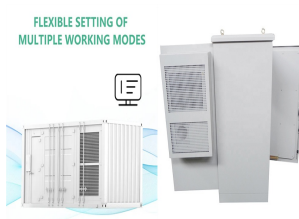
A 60mm rounded U-shaped bracket for securing the Lumena Sky-Eye solar powered flood light to a 60mm diameter pole or lamp post. This bracket allows the Sky-Eye light to be mounted further down a pole, rather than directly under ???



I bought the Midea U - shaped AC but the installation instructions says I need to screw in the support bracket. I don't want it permanently installed on the windows since I want the option to change the rooms as needed.



If your solar lights don't have any built-in hooks, you can use a wire hanger or coat hanger to create one. Simply bend the metal into a U-shape and then twist the ends together to form a hook. Installation Guide for Mounting Solar Lights on a Fence Step 1: Choose Your Solar ???



Ladder; Step-by-Step Guidelines on How to Install Solar Light Pole Step 1: Choosing the Right Size Solar Light Pole. When selecting a solar light pole, you must first determine the size that is right for your application. Small poles are best suited for residential applications while larger ones may be necessary for commercial or industrial settings.

HOW TO INSTALL THE U-SHAPED BRACKET OF SOLAR LIGHT



Solar bracket installation costs can change based on the type and number of brackets, installation complexity, and location. Usually, the cost of setting up a solar panel system ranges from a few hundred to several thousand dollars. Could you ensure your roof is in good shape and can hold the weight of the panels? Less shade from trees or



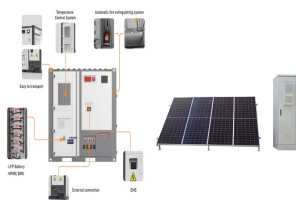
LEDMO 90 Degree Wall Mount Bracket for LED Parking Lot Light - L Shape Bracket Tenon Adaptor for Dusk to Dawn Outdoor Commercial LED Shoebox Area Lights with Photocell Street Lights Yard Light Install light poles with a minimum size of 1.5 inches and a maximum size of 3.5 inches. The solar light mounting bracket is used in outdoor



Use solar lights with higher mounting brackets or buy more solar panels if your fence post is taller than 4 feet. Installing solar lights on a fence post requires cutting and stripping the wires for each light, which is a significant stage. Before cutting the wires to length, determine the wire required for each light.



Measure the slope, or pitch, of your roof. Most skylights are manufactured with specific roof pitches in mind. It is important to measure the pitch of your roof before purchasing your skylight. Use a level with a ruler on the side to measure the roof run and height to calculate the pitch of your roof.



Step 2: Mount the U-shaped brackets. Here, the two U-shaped brackets must first be affixed onto the ceiling or the suspended crossbar. The distance between the two U-shaped brackets depends on the distance ???

HOW TO INSTALL THE U-SHAPED BRACKET OF SOLAR LIGHT



??? Slip Fit: Slip fit mount is the most commonly used mount option. On one end of the slip fitter, the LED light fixture is attached and the hollow end slips over a round pole, or an arm extending from a pole. The slip fitter is then secured onto the round pole with screws. It is mainly for a round light pole tenon mounting bracket for one lighting fixture.



This guide will take you through what you need to do to fit your solar powered floodlight safely and securely. Tools for the job. Hammer drill; Masonry drill bit (correct size for screws) Pencil or marker pen; Spirit level; Crosshead ???



British brand solar products manufactured to British standards with guarantees that you can trust. Competitively priced for the international market. solar inverters, solar batteries, solar cables and MC4 connectors, solar pumps, solar street lights, LED bulbs etc.



They ensure secure and stable solar panel installation. They are designed to fit various tile types and offer a weather-resistant and long-lasting solution. Bracket Shape. Aluminium brackets can be shaped into detailed and custom designs using extrusion. Steel brackets are usually simple and robust, focusing on support rather than looks



Liberty 6 in. Nickel Steel U-Shaped Decorative Shelf Bracket (2-Pack) I grabbed this set of Nickel steel U-Shaped Decorative Shelf Brackets because of the shape and outstanding color. Looking to reset my craft room and these bracket ???

HOW TO INSTALL THE U-SHAPED BRACKET OF SOLAR LIGHT



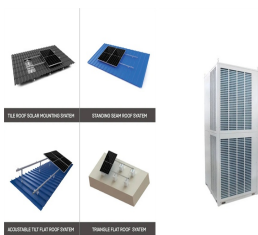
It is easy to install with a slim solar panel and clip on style bracket. It is PIR motion activated, which means when you open the door (and as long as you are within range: 2m ??? 6.5m) the light will turn on and stay on all ???



This is the most comprehensive solar panel mounting video article, including videos of various mounting brackets. For example, how to use the balcony to install solar panels. This includes iron sheet/ground roof solar panel bracket installation, tile/slate roof solar panel bracket installation, aluminum ground bracket installation, concrete/sand installation bracket, etc. At the end of the



When installing a solar street light, there are several key safety precautions you must take to ensure that the installation process is safe and successful. Ensure that the area where you plan to install the light has no overhead power lines, that the area is free of obstructions, and that the equipment you use for installation is in working order.



How to Install Solar Umbrella Lights is as simple as hanging the lights delicately from the ribs of your patio umbrella and setting the solar panel in a nearby sunny spot. Your outdoor space will have a warm and ???



Solar energy has become a cornerstone of renewable energy solutions worldwide. A critical component of any solar installation is the mounting system, which includes mounting rails and racks. Mounting solar panels to ???

HOW TO INSTALL THE U-SHAPED BRACKET OF SOLAR LIGHT



2. Benefits of Using U-Shaped Metal Brackets for Strut: - Strength and Stability: U-shaped brackets provide excellent load-bearing capacity, ensuring the stability and structural integrity of the supported struts. - Easy Installation: The design simplicity of these brackets enables quick and hassle-free installation, saving time and labor costs.



Bushes manicured to taper at the top often take on a conical appearance, which makes them naturally look like an ornamental shape. Net light sets can be connected end to end and wrapped either vertically or horizontally on these types of shapes, however, we recommend you hang them like curtain panels vertically around the bush to avoid a heavy ???