

HOW TO INSTALL THE ANTI-SLIP MAT FOR PHOTOVOLTAIC PANELS



Can a slip sheet damage a solar racking system? However, this configuration can cause wear and tear to the roof due to the weight and movement of the panels and panel support structure. Slip sheets are sacrificial rubber or plastic sheets designed for installation between the base mounts of the solar racking system and the surface of the roof.



What are solar slip sheets & how do they work? They protect the roof from damage caused by the solar array and prevent excessive heat buildup on the roofing surface. In contrast to the temporary materials used to protect roofs during the initial construction of the solar power system, slip sheets stay on the roof surface for the entire life of the system.



Which materials should be used to install photovoltaic modules? JA Solar recommends that when installing modules at the seaside, stainless steel or aluminum materials should be used to contact the photovoltaic modules, and the installation parts should be well protected from corrosion. The tilt angle of the modules is measured between the surface of the modules and a horizontal ground surface.



How do I install a solar photovoltaic system? The most efficient way to install a solar photovoltaic system is by using a Heliomotion. Simply because a Heliomotion has innovative sun-tracking technology that enables solar panels to track the sun throughout the day and year. The possibilities for mounting solar are endless.



Can solar panels be mounted on a flat roof? For solar panels on a flat roof, mounting systems are slightly different and can include a triangle 'ballast' box to support the panels. For solar thermal panels (with cells that use the sun's heat to warm water in a house) things are a little different.

HOW TO INSTALL THE ANTI-SLIP MAT FOR PHOTOVOLTAIC PANELS



How do you cut a slip sheet for a solar power system? Using state-of-the-art knife cutting, waterjet cutting, and laser cutting technologies, our experts cut rubber/PVC, EPDM, or any other custom material needed for slip sheets to match the footprint of the particular solar power system. We offer the following cutting capabilities:



Do not use hardware that does not belong to the panels, or you may damage them and void your warranty. Gently shake each panel to confirm that they are correctly installed. Step 5: Wiring. Check the condition of the solar panel wiring to ensure there are no cuts, exposed wires, or damaged insulation. Return or replace any damaged products.



Finding an unshaded spot is best, but sometimes shading is unavoidable. Some solar panel systems can minimise the impact of shading using "optimisers". Solar optimisers help improve the overall performance of your solar panel system. So, if one panel is shaded, it doesn't impact how much electricity the other panels can generate.



Solar panels are one of the most commonly fitted accessories to Caravans, Hybrids and Camper trailers today, and for good reason. Permanently mounted solar panels are a breeze for keeping your batteries topped up up and can allow you to run some pretty incredible 240V appliances in the middle of nowhere, if you have the right battery and inverter system.

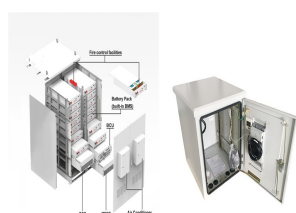


Here is a piece on Solar Panel Fixing Options built to help Developers, Contractors, Architects, and Homeowners grasp what's on offer for fixing PV panels. Installing solar panels to a trapezoidal roof such as a Kingspan ???

HOW TO INSTALL THE ANTI-SLIP MAT FOR PHOTOVOLTAIC PANELS



Many factors impact if your home is suitable for installing solar panels, including the type of solar panel being installed, and the orientation and pitch of the roof. " Solar PV (photovoltaic) panels generate electricity from ???



- * Don't install PV modules in the area where may has combustible gases.
- * Touch PV module's electrical part by hand directly is prohibited, EPDM EPDM anti-slip mat anti-slip mat. The conditions of installation, operation, using and maintenance of the modules shown in this



GRP Anti Slip Flooring Sheets - Fixings & Adhesives. We recommend you use an adhesive product as a primary fixing. Our 2-Component PU Adhesive is designed for Anti Slip Flooring Sheets.. As a secondary fixing, we recommend our Stainless Steel Screw Fixings where suitable. For projects where you cannot use adhesive, use our screw fixings as the primary fixing.



Here is the simple steps to install solar panels. Step ??? 1: Solar Panel Installation Made Easy. Step ??? 2: Assembly of Solar Panels. Step ??? 3: Electrical Wiring. Step ??? 4: Connection between Solar Panel and Solar Inverter. Step ??? 5: Connection between Solar Inverter and Solar ???

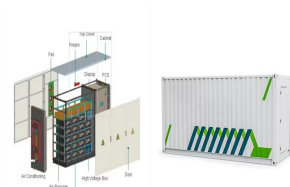


8. Before installing the modules add anti-slip protection to the lowest row of modules (horizontal rail installation only). To do this, fasten M6 x 20mm bolts (with the shank downwards) to the ???

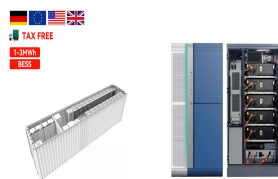
HOW TO INSTALL THE ANTI-SLIP MAT FOR PHOTOVOLTAIC PANELS



Anti-slip floor mats are available in any format and suitable for either home, commercial or industrial environments. Anti-slip mats are made as individual mats or produced in rolls of material like you would expect when buying a new carpet. Individual anti-slip mats can be placed where needed and are available in various colours and sizes.



Flat roof PV systems are generally installed in the form of concrete columns and PV brackets. The investment cost is not high and the economy is better. On a horizontal roof, we can determine the angle of the PV panels by adjusting the ???



The slip sheets can be tack welded, tack adhered or even loose depending on the roof manufacturer. Upon completion of the PV installation, provide permanent walk pads at areas designated by the roof manufacturer as ???



The biggest reason for the price drop lies in the photovoltaic (PV) panels themselves: 90% reduction in price (seen in 2019) from \$2/watt to a measly \$0.20/watt! On average, in the United States between 2010 and 2020, the cost of installing a residential solar system fell from \$7.50/watt to \$2.50/watt .



A good example of anti slip floor mats is the entrance or entryway mat, which is installed across the main doorway of any building or house. Where To Install Anti Slip Floor Mats. Anti slip floor mats are installed in many different places both at home and in commercial or industrial settings.

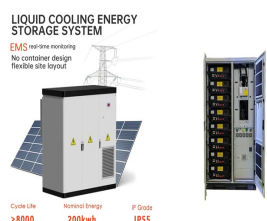
HOW TO INSTALL THE ANTI-SLIP MAT FOR PHOTOVOLTAIC PANELS



Ballasted (weighted) Installation. In a ballasted installation, the PV array is not fixed to the roof but is held in place by weights, often concrete blocks. A calculation is made for the ballast weight required to hold the PV array on the ???



Installing solar panels starts with safety and preparation. Follow these solar panel mounting instructions for a successful diy solar panel setup. Setting Up Scaffolding. Starting any installation means safety first. Begin by setting up scaffolding around the area. This makes a stable platform and cuts fall risks.



PROline Anti-Slip Tape: Enhance Safety with Superior Grip. PROline Anti-Slip Tape Panels: A pack of 10 premium quality, self-adhesive anti-slip tape pieces, designed to enhance safety on stairs, walkways, ramps and more. Superior ???



This will give the solar panel mounts a stable foundation, and will make sure they don't get damaged in stormy weather. Solar panel mounts are secured ??? Once the roof anchors have been fixed to the property, the installer will attach the solar panel mounting system to them. The framework will run both vertically and horizontally across the



It is only after getting permission from utility providers that you can complete the final connections between your home wiring and this solar panel system. Step 5: Testing and Activation. Before activating the photovoltaic installation all wire connections ought to be double checked while voltage levels need monitoring as well .

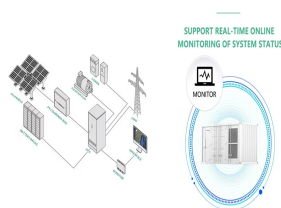
HOW TO INSTALL THE ANTI-SLIP MAT FOR PHOTOVOLTAIC PANELS



Check the orientation, size, pitch, and shading of your roof. The ideal roof for a residential solar system has 500 sq ft (46 m²) of unobstructed, south-facing, unshaded space, sloped at a 30-degree pitch. Your roof likely doesn't meet this ideal, but that doesn't mean it's unsuitable for solar. East- or west-facing roof areas are okay, so long as they're not shaded by ???



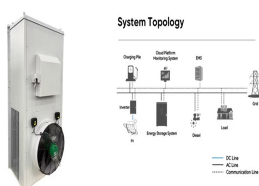
DIY Solar Panel Installation is a great way to produce renewable energy and lower your energy bills. Read our guide on how to install solar panels yourself. Skip to content. 8.00am - 4.00pm; 01903 213141; Home; About; Contact; ???



In practice, at scale, each solar panel could be fitted with railings on each side, with an electrode spanning across the panel. A small electric motor, perhaps using a tiny portion of the output from the panel itself, would drive a belt system to move the electrode from one end of the panel to the other, causing all the dust to fall away.



The flat anti-slip sheets can be screwed, bolted, riveted or bonded onto surfaces including wood, concrete, steel, chequer plates and even on open mesh grating. Benefits of GRP Anti-Slip Sheets and Panels. Easy to install; Instant protection from slips and trips; Highly functional; Incredibly tough and durable; Perfect as a short or long term



Always follow the step-by-step instructions in your solar panel installation manual. However, these example steps offer a basic overview of installing solar panels on a roof as well as what your