

HOW TO INSTALL THE NEUTRAL COLUMN OF PHOTOVOLTAIC BRACKET



Why should you install a solar panel bracket? The purpose of installing the bracket is to better fix the solar panel. If there is a more convenient and feasible method to fix the solar panel. PVMars will definitely recommend it to you, and effective solutions are based on solar panels' characteristics and your on-site installation environment.



Where should a solar photovoltaic installation be installed? The installation looks best when the panels run parallel to the edge that is nearest them, which is usually the eaves. We recognise that after performance, aesthetics are the most important aspect of a solar photovoltaic installation and so our installation teams will ensure this to be the case.



How do I contact a solar panel installer? If you would like more information about solar panel installations or would prefer to speak to someone you can contact us on 01494 773400. All of the Solar panels in our range use a solid aluminium frame to encase the individual solar cells.



How to install a balcony Solar System? But at the same time, it should be noted that if you also want to install a balcony solar system, you need to know the following points: 1- Make sure your balcony has enough space to accommodate the solar panel ??? the general solar panel is about 1 meter long, and the largest solar panel is about 2 meters long at present.



How to install solar panels? Instead just a simple steel pole with a concrete anchor is placed on the ground. This simple structure provides in general sufficient support to solar panels. In some cases, due to the unsuitable soil type or extreme weather conditions, special adjustments are required. Among the available pole mounted schemes, you will often find Side Pole Mounts.

HOW TO INSTALL THE NEUTRAL COLUMN OF PHOTOVOLTAIC BRACKET



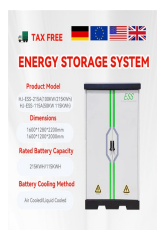
How do solar panels attach to a roof? The most common roof mounted structure of all. Consists of attaching a set of rails to the rooftop. Each solar panel is then attached to the rails through a set of clamps. The rails are secured to the rooftop by screws and bolts. This type of installation directly uses bolts and screws to secure each panel to the roof.



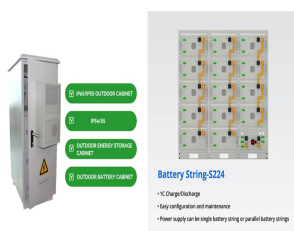
Installation process: Detailed steps to insert plugs, wrap valve spigots, and fix brackets. Ensuring proper alignment: Tips to ensure the radiator is level during the installation process. Professional assistance: When to consider using a professional service for installation help. Tips to hang a horizontal radiator



After measuring and planning the system, purchase all the necessary equipment to mount and install the solar panels. This includes mounting brackets, clamps, screws, nuts, bolts, grounding wires, and other components. Prepare roof. Before installing the mounting hardware, the roof needs to be properly prepared.



Single-ground column bracket needs only one column to support a square array unit. As the whole square array only needs column support, the number of PV modules that can be arranged on a single set of frames is less, generally 8, 12, or 16. and other water resources to install distributed photovoltaic power stations, realizing new



Installing solar panels on steel buildings can also produce energy-saving benefits because installing photovoltaic modules on the roof is equivalent to adding a layer of maintenance structure; the thermally conductive structure inside and outside the factory changes, reducing heat exchange and thereby reducing the internal energy consumption of the factory.

HOW TO INSTALL THE NEUTRAL COLUMN OF PHOTOVOLTAIC BRACKET



According to the latitude and longitude and terrain of photovoltaic plate installation, the periodic movement trajectory is automatically planned, the operation is monitored centrally, and the



PV panels mounted on roof Workers install residential rooftop solar panels. The solar array of a PV system can be mounted on rooftops, generally with a few inches gap and parallel to the surface of the roof. If the rooftop is horizontal, the array is mounted with each panel aligned at an angle. If the panels are planned to be mounted before the construction of the roof, the roof can ???



As the bottom brackets are freely attached to the column, measure down from the top brackets around 25-30cm and mark where you want them to go (make sure both sides match), before drilling the holes and slotting the bracket holder on. Step 4. Now that you have your brackets secured to the wall, it is time to hang your radiator.



Remove the upper 5/16" X 3" bolt and nut that squeezes the bracket around the steering column. Next remove the two 5/16" X 1" bolts that hold the bracket to the firewall and slide the bracket down, off the end of the steering column. If a column shift ididit steering column is installed, a neutral safety switch is included and mounted to



Company Introduction: Taizhou Suneast New Energy Technology Co., Ltd is a high-tech enterprise specializing in solar photovoltaic bracket design, production, installation and related consulting services. Company headquarters is located in the famous "hometown of stainless steel" Taizhou, Jiangsu province town, combined with local advantage resources, since 2005 ???

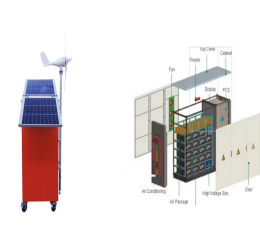
HOW TO INSTALL THE NEUTRAL COLUMN OF PHOTOVOLTAIC BRACKET



In this article, we will guide you through the process of installing these essential brackets so that you can maximize the benefits of your solar panel system. From choosing the perfect location ???



Horn Contact Pin Assembly Installation Instructions; Horn Contact Repair Instructions; How To Make A DD Shaft; Neutral Safety Switch Alignment; Push-In Style Lever Installation Instructions; Tilt Dress-Up Kit Installation Instructions; ???



INSTALLATION MANUAL v.3 US PATENT No 8,104,231 US PATENT No 8,615,954 US PATENT No 9,315,999 SOLAR STACK MOUNTING SYSTEM FOR FLAT AND PITCHED ROOFS. 2 TABLE OF CONTENTS Photovoltaic Systems. Disconnect AC power before servicing or removing modules, AC modules, micro inverters and



Install the solar bracket frame: Connect the bracket frame to the support column and secure it with bolts or other connectors. Make sure the stand frame is flat and stable. 4, Install photovoltaic panels: Install the photovoltaic panels on the bracket frame and fix them with clamps or screws ???



But you can install the bracket mounts on any surface as long as it is flat. Your solar panel bracket manual includes a parts list, so make sure everything is included. The following are components for a WindyNation adjustable tilt solar mount. Parts for corner brackets and other types of mounts will be different depending on the manufacturer.

HOW TO INSTALL THE NEUTRAL COLUMN OF PHOTOVOLTAIC BRACKET



3??? Ground mounting structures: concrete base solar panel ground mounts, commonly used mounting type, suitable for both large and small solar projects, not special requests on soil condition; b. ground screw mounting brackets, suitable for large projects, professional ground screw driver, large-scale installation can be implemented save installation costs and maximize ???



Follow it up under the dash to find a place to splice in. If you have a service manual it might tell you exactly which one or color. The park/neutral switch is at the bottom of the steering column. On a 66 it is a separate plug with purple wires. Run a wire from here to park/neutral switch and back and you should be good to go.



In this guide, we'll use EcoFlow's 400W rigid solar panel as an example. With an industry-leading 23% efficiency rating and an IP68 waterproof rating, EcoFlow's rigid solar panels are among the highest-performing and most durable options for residential photovoltaic (PV) panel arrays.. EcoFlow's rigid solar panels come with a EcoFlow Tilt Mount Bracket for easy ???



Step 4: Install New Neutral Safety Switch. Next, install the new neutral safety switch in place of the old one. Make sure all components are connected securely and check them for tightness. Try to avoid over-tightening ???



Photovoltaic bracket is a special bracket designed for placing, installing and fixing solar panels in solar photovoltaic power generation systems. The general materials are aluminum alloy, carbon steel and stainless steel. In the specific installation process, you need to choose a suitable installation method according to different types of

HOW TO INSTALL THE NEUTRAL COLUMN OF PHOTOVOLTAIC BRACKET



Different design methods of solar photovoltaic brackets can make solar modules make full use of local solar energy resources, so as to achieve the maximum power generation efficiency of solar modules. Moreover, the different materials, assembly methods, bracket installation angles, wind loads and snow loads of solar photovoltaic brackets can greatly ???



In order to achieve the effective use of resources and the maximum conversion rate of photovoltaic energy, this project designs a fixed adjustable photovoltaic bracket structure which is easy to adjust and disassemble, and compares the advantages and disadvantages of existing photovoltaic brackets in actual use, proposes an innovative and optimized design, and uses ???



The omnidirectional photovoltaic tracking bracket system is a complete set of patented solar power generation products developed and designed by Weineng Smart Energy for the construction of photovoltaic and photothermal power stations, which is disruptive, stable in quality, and fills market gaps. without the need for leveling the ground



The installation structure of the solar panel bracket should be simple, strong, and durable. The material of the photovoltaic array bracket must withstand various harsh environments on the project site to ensure 25 years of weather ???



1. Solar Panel Mounting Brackets. Photovoltaic brackets are critical to solar panel mounting systems. These brackets account for almost 10% to 20% of the solar system cost. The brackets are typically designed to install and fix solar panels. They consist of columns, purlins, beams, foundations, welding parts, etc.

HOW TO INSTALL THE NEUTRAL COLUMN OF PHOTOVOLTAIC BRACKET



prevent Steel Multi Column from falling away from the wall, usually in line with Wall Brackets. If more than 2 brackets have been supplied these should be spaced evenly. Bracket Positions Blanking plug Air vent Flow Return Diverter position Multi Column Orientation Please read these instructions and terms and conditions carefully prior to



columns for a broad range of applications. From road and amenity lighting, floodlighting and security lighting to CCTV cameras, and more recently small scale *Outreach brackets series PR1 & PR2 below 0.50m projection fit onto 100mm spigot (/SP1). 0.50m + on standard 230mm spigot (/SP). Please refer to pages 37-39.



Flat roof PV systems are generally installed in the form of concrete columns and PV brackets. The investment cost is not high and the economy is better. On a horizontal roof, we can determine the angle of the PV panels by adjusting the brackets so that the PV system receives the most light radiation to obtain the maximum power generation. The biggest benefit of installing PV power ???