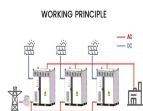
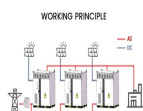


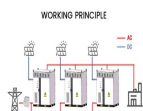
# HOW TO JUDGE WHETHER THE PHOTOVOLTAIC PANEL IS BAD



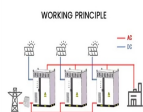
Can solar panel quality defects be detected without testing equipment? Some solar panel quality defects can not be detected without testing equipment, such as electroluminescence (EL) testers, sun simulators, thermal cameras, or resistance testers. However, there are also several defects that can be identified visually.



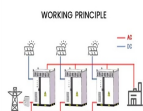
How do I know if my solar panel is bad? If you notice that your solar panel is not producing as much energy as it used to, it could be a sign that something is wrong. Another sign to look out for is physical damage to the panel, such as cracks or scratches. In some cases, a bad solar panel may also cause your inverter to display an error message.



What happens if a solar panel is bad? In some cases, a bad solar panel may also cause your inverter to display an error message. To determine if a solar panel is bad, look for signs such as decreased energy production, physical damage or discoloration, hot spots, potential-induced degradation (PID), and monitoring system alerts.

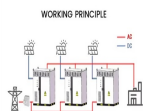


What defects are common when testing solar panels? The following defects are common when testing solar panels: Lower output than stated in data sheet (we require positive tolerance on each solar panel) Other defects that we find are dirt marks on the pv module, gaps on the corner of the pv frame, poor quality labels and solar panels that do not meet the requirement of positive tolerance.

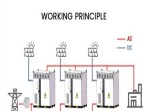


Do solar panels have defects? Regardless in which country your solar panels are produced, solar panel defects occur on a regular basis. The payback performance of a solar PV systems is based, besides FITs and irradiation, on the initial power output, power degradation and the lifetime of the pv module (s).

# HOW TO JUDGE WHETHER THE PHOTOVOLTAIC PANEL IS BAD



How do you know if a PV system is bad? Besides, this method can provide an overview of the PV system's condition. Some visible defects in PV modules are bubbles, delamination, yellowing, browning, bending, breakage, burning, oxidization, scratches; broken or cracked cells, corrosion, discoloring, anti-reflection and misaligning (see Fig. 1).



One of the biggest challenges for solar panel owners is understanding how weather affects solar panels. Table of Contents. 10 Reasons Why Weather Affects Solar Panels. We're going to discuss the top 10 reasons



A solar PV system usually comprises: solar panels. inverter usually fitted in the loft, this converts the direct current (DC) produced by the solar panels into safer alternating current (AC) which can be used in your home.



Testing a solar panel to check its output and get the most out of your system is easier than you may think. Ensuring your solar panel is in working order is vital for energy production. Whether you want to go fully off-grid, or

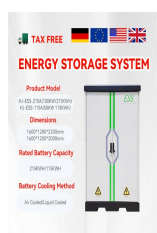


And your solar panels are no different. While solar panel monitoring apps may not tell you how many steps you're taking or how many hours you're sleeping, they can still provide valuable information. Like how much money you're saving by going solar. Let's take a look at 5 of the top solar panel apps on the market. An App to Monitor

# HOW TO JUDGE WHETHER THE PHOTOVOLTAIC PANEL IS BAD



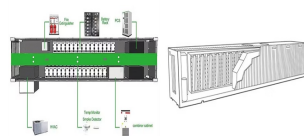
If you discover that your residential solar panels are not working properly, you need a plan of action for how you are going to tackle the problem. Before picking up the phone to call for solar panel maintenance ("Hello, my solar panels are not working???) you can perform a few quick checks to further diagnose the issue:



However, like any other piece of machinery, solar panels can eventually malfunction. It's important to be able to identify signs of a bad solar panel so that you can have it repaired or replaced as soon as possible. There ???



It can diagnose some of the defects and failures on PV modules, connectors, AC or DC converter and panels. Furthermore, this method does not require shutting down systems. The main task of thermography measurement is to find the ???

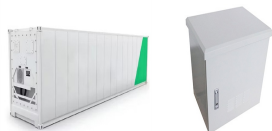


Expands Solar Panel Life. Monitoring the functionality of your solar panels also plays a vital role in ensuring the longevity and warranty compliance of your system. Most solar panel manufacturers ???



How to judge the quality of photovoltaic power generation? 1. Judging the quality of photovoltaic power generation can be carried out from the following aspects: 2. Look at the appearance: observe whether the cell spacing of the photovoltaic module is uniform, whether the cell arrangement is neat, whether the color is different, whether the welding strip is open ???

# HOW TO JUDGE WHETHER THE PHOTOVOLTAIC PANEL IS BAD



Find out whether solar panels are worth it for you. Trusted Traders to find a reliable solar panel installer near you. Our service is free, and all traders listed must pass our rigorous assessments. 3. Solar panel installation is disruptive.



At PV CYCLE we distinguish between household quantities and waste from professional use. Quantities which can be considered of a household origin and below 20 PV panels are taken back through Dedicated Collection Facilities (DCF) free of charge. Quantities above 20 PV panels arising from professional installations and solar farms are billed at cost and paid individually by ???



A solar panel's power tolerance is the extent to which it can produce more or less electrical power than its rated capacity. For example, if you have a 200-watt panel with a tolerance of 5 percent, it may produce 195 watts or 205 watts. The build of the frame. An excellent solar panel frame should have a superb visual appearance.



First of all, it is necessary to see the supplier of the component, whether it is the top brand of the solar panel industry, generally, the big brand warranty and after-sales service is guaranteed. Secondly, it depends on whether there is any welding leakage when welding the solar cells, and the quality of the backpressure, whether there is any unevenness, bubbles, ???



How to Evaluate Solar Panel Companies? Image by Getty Images on Unsplash+. With the increasing number of solar companies in the market, it is difficult to decide which one is the best. Now the question arises ???

# HOW TO JUDGE WHETHER THE PHOTOVOLTAIC PANEL IS BAD



Here's how you can avoid solar panel scams. Not every solar company is trustworthy, and getting stuck in a bad deal could cost you. Don't Be Fooled: 7 Solar Panel Scams to Know and Avoid - CNET



A solar panel's power tolerance is the extent to which it can produce more or less electrical power than its rated capacity. For example, if you have a 200-watt panel with a tolerance of 5 percent, it may produce 195 watts ???



Five common solar panel defects. The following defects are common when testing solar panels: Scratches on frame / glass; Excessive or uneven glue marks / Glue marks on glass; Gap between frame and glass due to poor sealing; ???



How do you know if a solar panel is bad? The efficiency of solar panels degrades over their lifespan. You can check the voltage output and compare that reading to the original output of the panel.



How much does a solar panel installation cost? The cost of a solar panel installation varies across the United States. A general estimate for a small (5 kW) rooftop system in 2021 is \$15,000-\$25,000 (before tax credits or ???

# HOW TO JUDGE WHETHER THE PHOTOVOLTAIC PANEL IS BAD



If your solar panel's performance warranty guarantees 80% performance after 25 years, then their degradation rate is calculated as 20%/25 years, or 0.8% production loss each year. By the end of its lifecycle, a 400W-rated panel would only output ???



To assess the performance of a solar panel, you can measure several electrical parameters. When selecting photovoltaic panels, measuring the open-circuit voltage (Voc), short-circuit current (Isc), maximum power point voltage (Vmp), ???



Solar panel system sizes are normally expressed in kilowatt peaks (kWp), which is the maximum output of the system. Household solar panel systems are typically up to 4kWp. We spoke to more than 2,000 solar panel owners about the size of their system and how much of their electricity it provides in summer and in winter.



The solar panel should be clean and free from dust. Ensure you do your test in full sunlight without any obstructions. Angle the solar panel towards the sun at the correct pitch. If the weather is bad, redo the test on a clearer day. Other Common Issues With Solar Systems (And How to Test Them)



This means that we should not judge a solar panel's quality based just on the country of origin. Choose a solar panel based on the type of building you're using it in. Depending on whether you're using the solar panels in a Consult your past 2 or 3 energy bills to decide whether the solar panel's price or efficiency is a better

# HOW TO JUDGE WHETHER THE PHOTOVOLTAIC PANEL IS BAD



Solar panel orientation and tilting: Panels facing due north will usually generate more energy (over the day) than those facing east or west, and they should be optimally tilted. System losses: Cabling loses about 2% of power while the inverter can lose 3-4% of power in the conversion from DC to AC power.



Interested in whether you might need planning permission for your solar panel installation? Find out more here. Installing bird netting for solar panels. A great way to prevent birds from causing problems for your solar panel is to install netting, "bird barriers" or bird deterrent kits. These are different names for broadly the same things.



4. Throw a towel over the solar panel to stop it from generating any power.
5. Touch the red multimeter probe to the metal pin on the male MC4 connector (the one connected to the solar panel), and touch the black multimeter probe to the metal pin on the female MC4 connector (the one connected to the charge controller).



You'll need these to connect the multimeter to your solar panel system. How to measure solar panel amperage. Now that you have your equipment, and have taken the necessary steps to test solar panel output, you need to perform a simple, but specific calculation for testing the solar panels:  $\text{Volts} \times \text{Amp} = \text{watts}$  To determine the power the solar



It's important to be able to identify signs of a bad solar panel so that you can have it repaired or replaced as soon as possible. There are two main ways to determine if a solar panel is bad: by physical inspection and by ???