

HOW TO LAY PHOTOVOLTAIC PANELS IN RURAL TILE HOUSES



3 ? Solar panel grants like the ECO4 scheme can help consumers get free solar panels in the UK. Currently, there is 0% VAT on solar panels, batteries, and other renewable energy products, allowing for a discount of up to ?2,850 on the purchase of a 4kW system.; The Smart Export Guarantee potentially allows consumers to earn money by giving energy back to the ???



When the sun shines on a solar panel, solar energy is absorbed by individual PV cells. These cells are made from layers of semi-conducting material, most commonly silicon. The PV cells produce an electrical charge as they become energised by the sunlight. The stronger the sunshine, the more electricity generated.



A solar panel installation system will save money on electricity bills, and reduce your carbon footprint. conventional slate and tile roofs and flat roofs. We also install solar panels on ground mounted framework. This is a common installation if a property has unsuitable roof elevations, or is a listed building. Solar panels generate



In this guide, we'll explain a typical solar panel installation from start to finish, as well as what all the hardware does, and where on your property you can install the panels. If you're interested in how much you could save with a solar & battery system, click the button below, enter a few details, and we'll generate an estimate.



Buying solar panels from Tesla is fast and simple. We use an online and virtual process to provide you the best value system and fastest time to installation. Learn more about installing solar for your home.

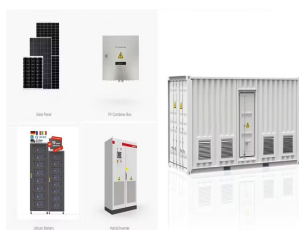
HOW TO LAY PHOTOVOLTAIC PANELS IN RURAL TILE HOUSES



Materials Needed for Building a Photovoltaic Solar Panel. Of course, you can only build your own solar panel system with the appropriate equipment. Don't worry. Everything you need is listed in this section. Solar Cells. The show's star is solar cells, so you must prioritize buying them before you build a solar panel system.



Case Study: solar panel installation for an average UK home ??? House type: Semi-detached ??? Solar panels: polycrystalline 4kW ??? Number of panels: 10-14 ??? Solar panel cost, including installation: £7000.00 (Actual price ranges from £5,000 to £9,000) ??? Estimated annual output: 3600 kWh (South of the UK) ??? Estimated Smart Export Guarantee Tariff: £50.00 (SEG ???)



Tile roofs are among the most difficult for PV installations. Ironically, they are the most common in California, Texas and Arizona ??? the best states for solar. Challenge accepted: let's learn how to install solar panels on ???



An average home solar panel system will cost around \$12,000 to \$25,000. Solar panel companies should also provide a free estimate and free site appraisal (we will touch more on the site appraisal later), outlining all pertinent information such as system cost, energy output, material listing, payment schedule etc.

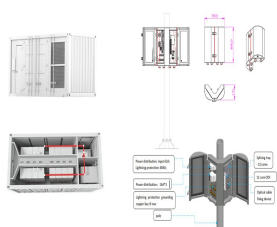


Solar panels and tile roofs work well together because a tile roof that is installed correctly can last for 100 years and solar panels themselves usually have a warranty of 25-40 years. When consulting a solar company, ask them if they install solar panels themselves, or do they hire someone else to install solar panels.

HOW TO LAY PHOTOVOLTAIC PANELS IN RURAL TILE HOUSES



Solar panel systems on homes are typically up to 4kWp. A system of this size can generate more than 3,000kWh per year. where the roof materials (e.g. tiles or slates) need replacing. Choosing an energy supplier to install your solar PV can be especially beneficial if you plan to make use of an export tariff (to be paid for the excess



System size: The power of your system is the main determinant of cost, adding roughly ?1,000 to ?2,000 per kW.; Type of solar panels: The material and design can have a major impact on the supply cost. The main 3 materials include monocrystalline, polycrystalline, and thin-film. Solar panel installation costs: What solar panel installers charge can vary depending ???



Suppose, in our case the load is 3000 Wh/per day. To know the needed total W Peak of a solar panel capacity, we use PFG factor i.e. Total W Peak of PV panel capacity = $3000 / 3.2$ (PFG) = 931 W Peak. Now, the required number of PV panels are = $931 / 160W = 5.8$. This way, we need 6 numbers of solar panels each rated for 160W.



Yes, installing PV panels on a tile roof is a complex challenge. Fortunately, it is entirely possible to use the appropriate techniques and materials to solve the problem and allow homeowners with tile roofs to install PV systems without ???



Most solar panel manufacturers post their warranty details on their websites. You can usually find the annual degradation rate (part of the performance warranty) included in a solar panel's datasheet. Aesthetics: If ???

HOW TO LAY PHOTOVOLTAIC PANELS IN RURAL TILE HOUSES



WHY tata power solar?. India's Most Trusted Brand #1 Solar Rooftop EPC Company for 8 years in a row* Pan India Presence; 20,000+ residential systems commissioned; 30+ years of experience with 1100+ MW of installations



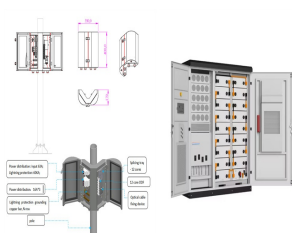
Types of Tiles Suitable for Solar Panel Integration. Choosing the right type of tiles is crucial. The integration of solar panels requires careful consideration of factors such as weight, durability, aesthetics, compatibility with mounting systems, and cost implications. Different Tile Materials Suitable for Solar Panel Integration. Clay Tiles:



Solar panel costs and savings. The size of the solar panel array your home requires influences the amount you'll pay for a solar PV system. Access difficulties to your roof may add to costs. Other price variables include whether ???

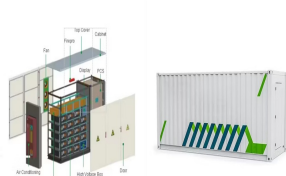


Photovoltaic (PV) systems are one of the most important renewable energy sources worldwide. Learning the basics of solar panel wiring is one of the most important tools in your repertoire of skills for safety and practical reasons, after all, residential PV installations feature voltages of up to 600V.



Installing a solar system in rural areas is a great way to achieve energy independence and reduce electricity costs. Rural areas often face unique challenges, such as limited access to the electrical grid and reliable power sources. Embracing solar energy can help address these issues, providing a clean and sustainable source of electricity.

HOW TO LAY PHOTOVOLTAIC PANELS IN RURAL TILE HOUSES



2. Attach the Fixing Bracket to the Solar Panel. Once you've gathered all the tools and followed up on permits and safety requirements, it's time to set up your mounting system. The first step is to attach the fixing bracket to the solar panel. Lay the solar panel face-down on the tarp or canvas to protect the photovoltaic surface.



This allows for air circulation to get between solar panels and tiles and for the air circulation to cool the solar panels in the hot summer months. The rails and brackets are being used by the solar panel mounting system to connect the solar energy system to the roof frame. The frame weight and the panels are distributed around the covering area.



The average solar panel takes up 2m², and your installer should leave around 40cm on each side of the array, as well as 3cm between every panel. In addition, your installer will need to leave space around any extra ???