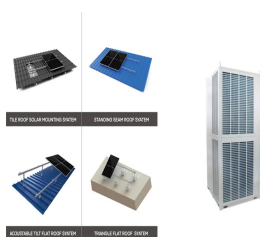


HOW TO MEASURE THE SLOPE WHEN INSTALLING PHOTOVOLTAIC PANELS



Annual energy output vs panel tilt angle, for a South-facing 5 kW array in Phoenix, Arizona Tilting the panels significantly increases energy output (read our article to find out solar panels power generation rate). The maximum output, at 30 degrees tilt, is 14% higher than the energy output of flat panels.

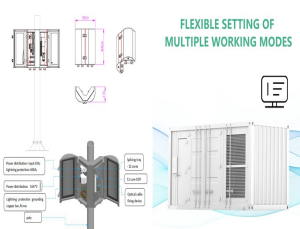


the effects of direction and the best slope angles on the solar panel which has an effect on the solar energy. The results showed that the slope angle change from 59° in Dec. and 0° in Jun (Nfaoui and El-Hami 2020). Herrera et al. calculated the best tilt angle using different ways. Also, they determined the daily optimum tilt angle by the

SUPPORT REAL TIME ONLINE
MONITORING OF SYSTEM STATUS



Read this article to discover everything you need to know about installing a photovoltaic system in Cyprus. +357 26 941 555 info@greenair-cy Mon - Fri: 08:00 - 18:00 HOME; ABOUT; SERVICES. During the installation process, the photovoltaic panels are mounted on the roof or on a ground-mounted system, and the wiring and electrical



Tools and Resources for Solar Panel Angle Calculation. To get the most out of your solar panels, you need the right tools and resources. Here are some essential ones to help you calculate the solar panel angle ???



The footprint is much easier to measure than the distance down the slope of your roof. Measure the horizontal distance at ground level, from below your ridge line to below the guttering. Check that measurement in the calculator, and you'll get a ???

HOW TO MEASURE THE SLOPE WHEN INSTALLING PHOTOVOLTAIC PANELS



How to calculate the optimal azimuth angle for solar panels? The sun's position in the sky changes hourly as well as monthly. With that, solar energy received per unit area per unit time???i.e., solar irradiance???also ???



Here we explain how to optimise your solar panel based on your location in the UK. you will need to calculate the tilt according to the time of year. For example, you will want your panels to be more vertical in the winter, to make the most of the low winter sun and have a lower tilt in the summer months when the sun is higher in the sky



One of the primary considerations for solar panel installation is the roof's structural integrity, which is typically the critical support structure for the panels. Significance of Roof as the Foundation. The roof plays a vital role in ???



But it's not the optimal tilt angle for solar panels. And, nowadays, free online tools make it easy to calculate a solar panel angle that will slightly outperform latitude. Let's take a look at how to use 3 of these tools: Our Solar Panel Tilt Angle Calculator; Global Solar Atlas; PVWatts; 1. Our Solar Panel Tilt Angle Calculator



??? roof pitch/slope ??? damaged roofing/fragile roofs/brittle roofing/skylights. a single control measure or a combination of different controls put together to provide the highest level of protection. GUIDE TO SAFE SOLAR PANEL INSTALLATION. 7. 6. SAFE INSTALLATION OF THE SOLAR PV SYSTEM

HOW TO MEASURE THE SLOPE WHEN INSTALLING PHOTOVOLTAIC PANELS



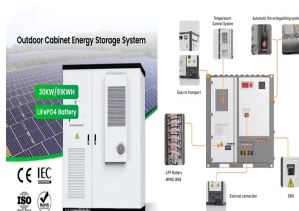
How to orient the photovoltaic panels. The higher energy efficiency of a photovoltaic system doesn't only originate from the quality of the system, but also from the orientation and inclination of the photovoltaic panels.. A photovoltaic system reaches its maximum productivity peak when the solar rays hit the PV Panels perpendicularly. That would of course ???



To maximize efficiency and reduce energy costs, you'll want to find the best solar panel tilt angle for your solar power system. When the sun is lower in the sky, solar panels need a greater tilt angle to receive direct sunlight. When the sun is higher, panels require less tilt.



This solar angle calculator allows you to calculate the optimum angle on a month-by-month basis. If you like this calculator please share on Facebook : The 24/7 Solar Tracker: This solar array tracks the sun across the sky throughout the day using a solar tracker. The calculator will then show the optimum angle for the solar panel.



Free calculator online of the slope or pitch of a roof or photovoltaic solar panels. Use the length and rise of the roof to find the slope, or enter the slope and the run length to get the tilted length. Simulation and design of photovoltaic systems How to calculate the annual solar energy output of a photovoltaic system?



The energy output of a PV panel changes based on the angle between the panel and the sun. The angle at which the sun hits a PV panel determines its efficiency and is what engineers use in the design of an efficient PV array for a specific location. Solar tracking systems designed by engineers help optimize the amount of sunlight that hits a PV

HOW TO MEASURE THE SLOPE WHEN INSTALLING PHOTOVOLTAIC PANELS



Are you wondering how much a new solar panel installation may cost in the UK? Use our calculator below to get an estimate. The solar panel cost calculator in order to calculate the solar costs and rewards, please answer the questions below: the average roof slope in the UK is around 30 degrees. ? 0? 90? 0? is a flat roof and 90



The impact of direction on solar panel output. Your solar panel system's direction is one of the biggest factors in determining its output. This chart below uses an average of 26 arrays in Yorkshire that all have peak power ratings of 4kWp, and confirms that south-facing is the best direction.



Here are instructions to measure the roof pitch or slope for solar panels. The pitch will impact the amount of tilt toward the Sun for the PV array. Most arrays are flush-mounted, meaning they follow the same pitch as the roof. this ???

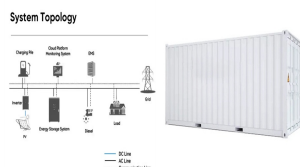


Maximizing Solar Efficiency: Tilt angles are crucial for optimizing solar panel productivity by ensuring maximum sunlight capture, thus enhancing energy absorption and overall efficiency. Geographic variations and the sun's path ???



Your solar panel orientation is an important part of the sizing of photovoltaic and solar thermal systems. Since solar power produced is directly proportional to the orientation of solar panels, the right orientation can not only maximize solar power but also decreases the cost of the project.. The orientation is composed of two parameters: direction and tilt angle.

HOW TO MEASURE THE SLOPE WHEN INSTALLING PHOTOVOLTAIC PANELS



Mounting angle: The tilt angle of the panel is to allow solar energy to receive as much energy as possible, and the size of the tilt angle is related to the latitude you are at. 6. Precautions when installing solar panels. Install photovoltaic panels to avoid shading as much as possible. Try to clean the dust and debris on the solar panels



The efficiency of a solar panel system depends on its ability to capture sunlight effectively throughout the day. The angle at which solar panels are tilted plays a pivotal role in achieving this goal. The Solar Tilt Formula is a mathematical expression used to calculate the ideal tilt angle based on the geographical location and season. Formula:



Use our solar panel calculator to get an idea of how much you could save by installing a solar photovoltaic (PV) system at home. Use the calculator . Based on the information you provide, the solar panel calculator will estimate: What size solar panel system is right for you. How much you could save on your electricity bills.



Annual energy output vs panel tilt angle, for a South-facing 5 kW array in Phoenix, Arizona Tilting the panels significantly increases energy output (read our article to find out solar panels power generation rate).The ???



We're here to connect you with local solar panel installers through the Covid-19 pandemic. We're following the latest government advice to ensure you can still request solar panel quotes from installers safely. Can I still get solar panels quotes? Yes ??? you can still get quotes from local solar panel installers.

HOW TO MEASURE THE SLOPE WHEN INSTALLING PHOTOVOLTAIC PANELS



Here are instructions to measure the roof pitch or slope for solar panels. The pitch will impact the amount of tilt toward the Sun for the PV array. Most arrays are flush-mounted, meaning they follow the same pitch as the roof. this measurement can be used to determine the angle of your roof pitch in degrees for a solar panel installation



??? Solar panel installation is not short duration work and will need scaffolding or similar equipment. ??? Edge protection should be provided along the eaves of the roof slope on which the work is being done. It should extend 2 m on each side beyond the area of work. If 2 m is not available (because the panel array is close to the gable



If installing panels on a flat roof, you have full control over the tilt angle. However, panels on sloped roofs must often conform to the roof's angle, which may not be ideal. In such cases, special mounting systems can adjust the angle, though this may add to the installation cost. How to Calculate My Solar Panel Azimuth Angle? 1



Use Renogy's adjustable solar panel tilt mount brackets to properly orient the panels at the perfect pitch for your site's solar access and roof and ensure maximum energy production. Conclusion. Determining how to calculate solar panel tilt angle is crucial to maximizing efficiency and solar energy production. Factors like geographical location