

HOW TO REPLACE THE ENERGY STORAGE ELECTRICAL EQUIPMENT FOR CHAINSAWS



How do I fix a clogged electric chainsaw? If your electric chainsaw is clogged with sawdust, first clean it out and restart the saw to check for chain bar lubrication. If the chain skips or jumps during operation, check the engine drive sprocket for wear and make sure the chain tension is set properly.



What can cause an electric chain saw to decrease in power? Any break in current may cause the saw to decrease in power, stall or shut down altogether. If you cannot identify and fix an electric chain saw problem, consult a professional. When your electric chain saw goes out you can save a great deal of money by repairing it yourself.



What happens if an electric chain saw goes out? When your electric chain saw stops working, it may decrease in power, stall, or shut down altogether due to a break in current. If you cannot identify and fix the problem, consult a professional. However, you can save money by repairing it yourself.

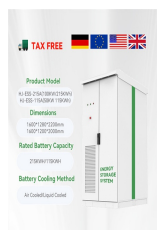


Should you buy a gas or electric chainsaw? If you own a gas chainsaw then you???ll just have to accept that maintenance will be a part of your life. I always remind readers, if you don???t want to do maintenance or you???re not fond of caring for machines, then buy an electric chainsaw, preferably battery.

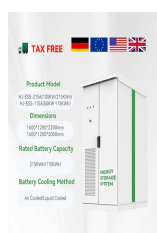


Why isn't my electric chainsaw working? If your electric chainsaw is not working properly, here are a few things to try. If the engine does not start at all, you might have a bad starter switch. Make sure you check to see that all connections to the switch are secure.

HOW TO REPLACE THE ENERGY STORAGE ELECTRICAL EQUIPMENT FOR CHAINSAWS



How do you refuel a chainsaw? The design of many chainsaws will require that you top up the chain oil when refueling. Always check the oil level and refill. Clean out the chain-oil portal when maintaining the guide bar. Sawdust can block delivery of oil to the cutting chain. Use the correct grade and type of chain saw oil.



Keep your garden tidy with chainsaws from Homebase. We offer petrol, electric, and Bosch models, available to buy online now. Skip to content
Skip to navigation. Energy data ???



Do Electric Chainsaws Leak Oil? Yes, electric chainsaws can leak oil, just like gas-powered models. Even though they run on electricity, they still need bar oil to lubricate the chain, which can lead to leaks if not managed ???



Replace worn cords/plugs ??? Faulty, damaged or inadequate gauge cords cause voltage drop and instability. Upgrade to 10-12 AWG. Rule out chainsaw issues ??? Malfunctioning chainsaw electronics or brush wear on ???



The most powerful electric chainsaws use batteries that are 15 amps. The amps required for a chainsaw battery may be determined based on operations and usage concerning power requirements. The lithium lawn ???

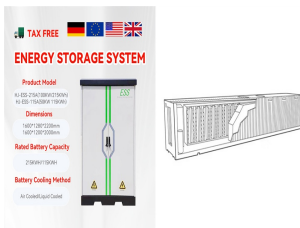
HOW TO REPLACE THE ENERGY STORAGE ELECTRICAL EQUIPMENT FOR CHAINSAWS



Chainsaws vary greatly in terms of what they're capable of, with small electric chainsaws working best on thin branches and larger gas chainsaws working best on thick logs. We've compiled the best chainsaws available, ???



With how much some of these chainsaws cost, you will want them to last 20 years! A Short Guide To Storing A Chainsaw Properly. When it comes to storing a chainsaw, you can go really in depth. Which is worth doing, if you want to take ???



Two-stroke engines burn a mixture of gasoline and oil, so there's no oil to change. Electric outdoor equipment benefits from pre-winter maintenance too, as you'll see. Gas-Powered Four-Stroke Equipment. Walk ???



Remove the entire carburetor and clean it. If it has damaged parts, replace it with a carburetor kit that fits your chainsaw model. Compression problems. The Stihl chainsaw is a two-stroke gas-powered tool that uses a ???



8 Best Electric Chainsaws. Corded Models From Ace Hardware & Wen Available From Home Depot. By Alex Rennie. Updated on Oct. 20, and the toolless adjustment knob makes it simple to tighten or replace your chain. ???

HOW TO REPLACE THE ENERGY STORAGE ELECTRICAL EQUIPMENT FOR CHAINSAWS



To ensure the longevity and optimal performance of your electric chainsaw, regular maintenance is crucial. In this guide, we will walk you through the essential steps to keep your electric chainsaw in top-notch condition. Key ???



Editors Choice: Husqvarna 455 Rancher. The Husqvarna 455 Rancher is a powerful and versatile 20??? Chainsaw that is equal to almost any task.. Some "pros" even consider this chainsaw one of the Best Professional ???



Also known as cordless battery chainsaws, a battery-powered chainsaw is an electric chainsaw that runs on batteries. An increasing number of DIY enthusiasts have been shifting to battery-operated tools since they are ???



Brushless energy; All PXC products; Power Tools. PXC 18V Tools Combo Kits; Brushless Technology Tools; All PXC 18V Tools; 12V Range; PXC 18V Batteries & Chargers. PXC Batteries; PXC Chargers; PXC Starter Kits; PXC ???



Chainsaws Power Equipment DIY Tools & Supplies Garden Lawn Stuff We Love Landscaping How-To Chainsaws are handy, hard-working tools. They can also be unwieldy and dangerous. These are our favorite tips for safe ???

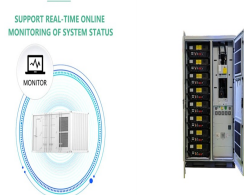
HOW TO REPLACE THE ENERGY STORAGE ELECTRICAL EQUIPMENT FOR CHAINSAWS



Clean or replace the muffler spark arrestor screen. Clean the carburetor compartment and the air filter. Replace if required. Monthly Maintenance. Check the chain brake band for wear and replace it when worn ???



2) STIHL MS 250 ??? 18??? 45.4 cc ??? Gas Powered Chainsaw The STIHL MS 250 Chainsaw ??? Besthomegear . While the STIHL MS???170 (above) is the best-selling STIHL chainsaw for homeowners, it has certain ???



Storing an electric chainsaw properly is crucial for keeping it in tip-top shape and ensuring your future wood-cutting escapades go off without a hitch. In this article, you'll learn how to:



In terms of energy efficiency, there is almost no contest between electric vs gas chainsaws - electric chainsaws, particularly rechargeable battery models, are the clear winners here. If you need the muscle of a gas chainsaw, ???



Maintenance for mini chainsaws is similar to that of full-sized chainsaws, with a focus on chain sharpness and tension. Chainsaw Tune-Up. Regularly tuning up your chainsaw can improve its performance and extend its ???