

HOW TO RESTORE THE PHOTOVOLTAIC INVERTER TO FACTORY DEFAULT



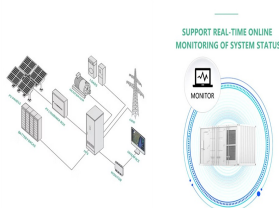
Check the inverter's display to verify it is functioning properly. This isolate and restart method can often resolve minor glitches and restore your Growatt Inverter back to its normal operation. 4 . Reset Button. The reset button is a direct and ???



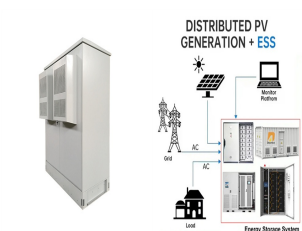
How to Perform a Hard Reset of your Solar Energy System. The first step to diagnosing an issue with your solar energy system is to complete a hard reset. A hard reset is like rebooting your computer and is usually fixing your inverter if it is showing a yellow or red light. Step 1: Turn off your solar inverter. Locate your solar inverter.



It has been working fine on PV, however I now want to run it linked to a genset to charge the batteries. On another note, why cannot understand why a password is need to reset to factory defaults if a grid option has been selected - that defeats the purpose of a factory reset option! multiplus ve.bus. Comment. 0 Likes 0 Show . Comment .



1- Solar Inverters Should Be Turned Off. If you've determined that your inverter needs to be reset, the first step is to find it and turn it off. Each string of solar panels will typically have one or two inverters installed. These power inverters are typically housed in a discrete outside enclosure. Flip the switch to "Off" to turn the



This action will reset the inverter's internal systems. Release the Button: After holding the button, release it. The inverter will restart automatically. You may hear a beep, and the LED indicators on the front panel will display ???

HOW TO RESTORE THE PHOTOVOLTAIC INVERTER TO FACTORY DEFAULT



To reset a solar inverter, first, turn off the solar inverter's AC and DC disconnect switches. Then, after waiting for about five minutes, switch the DC disconnect back on, followed by the AC disconnect. The steps may vary ???



Read below for step-by-step instructions on how to reset your solar system. Step 1: Turn off your inverter. Locate your inverter (it is usually in the garage or on an exterior wall) and lift open the bottom panel. Find the AC/DC toggle switch and ???



This comprehensive guide will walk you through the step-by-step process of resetting your solar panels, providing detailed instructions and technical insights to help you troubleshoot and restore your system to peak efficiency. Turning Off the System. 1. Inverter Shutdown. Locate your solar inverter, typically found in the garage or on an

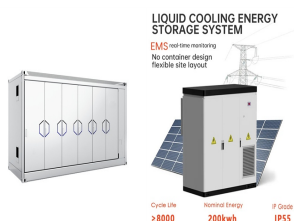


In this article, we will discuss why it's important to reset your solar inverter and how you can do it yourself with step-by-step instructions. Whether you're a homeowner or consumer, this informative article will help you troubleshoot your solar inverter with ease. It will usually be marked as "Solar PV", "Photovoltaic", or



It's really easy to reset solar inverter. Read this step by step DIY guide to learn how to shutdown and restart your PV inverter easily. Pas Solar Catalogue. 04-2225220. sales@pas-solar . 04-2225220. Products. Solar Panels. LONGI Solar Panels; JA Solar Panels; Canadian Solar Panels;

HOW TO RESTORE THE PHOTOVOLTAIC INVERTER TO FACTORY DEFAULT



For anyone trying to reset a Growatt unit. I have an SPF 3000TL LVM-24P and used the following to reset: Press Up+Down together (should get code 00) Press enter and adjust to 305 (up 3 enter, up 5) Press enter twice and wait for long beep and the unit will spin up. Check settings to make sure they cleared.



Shutting off individual circuit breakers and turning them back on will cause a reset. Maybe you have an AC disconnect switch that can be used to power off/on the microinverters. The IQ8 PV systems with a System Controller now include the Rapid Shutdown Switch which can power off/on the microinverters (as well as storage/generator).



To reset the filter light on your LG Dual Inverter AC, locate the control panel, find the filter light reset button, press and hold it for 3 to 5 seconds, and verify the reset on the control panel. If you encounter any difficulties, refer to the user manual or consult a ???



Resetting the Operating Parameters of the Inverter to Factory Settings with Communication Devices. This article links to descriptions for how to reset the inverter's operating parameters / energy data to factory settings with Sunny Explorer, Sunny Webbox, Sunny Boy Control, and Sunny Data Control.



A hard reset, also known as a factory reset or a system reset, involves restoring the inverter to its original factory settings, including both software and hardware configurations. It erases all user-defined settings, data, and configurations stored in the inverter's memory, essentially returning it to its default state as if it were brand new.

HOW TO RESTORE THE PHOTOVOLTAIC INVERTER TO FACTORY DEFAULT



This article describes how to reset the inverter's operating parameters / energy data to factory settings with Sunny Explorer. Procedure. Log into Sunny Explorer. Enter the installer password. Select the corresponding inverter. Select the "Device" tab. Click the "Edit" button. In the "Reset Operating Data" list box, select the desired operating



The "Reset this PC" feature allows you to reinstall the operating system with multiple options to start from scratch with a clean copy. For example, you have an option to restore the factory



Is this new MPPT bad? I did a factory reset and still not working normally. HELP . Attachments. 2AC73832-E4E9-4C31-8F58-4C66846FCA90.jpeg. 50.3 KB ? Views: 112 Trip circuit breaker between battery and MPPT and reset, then check if PV is working 2) disconnect battery and reconnect, then check if working 3) do a factory reset and change



This is how your solar inverter will be reset to its default settings. Resetting solar inverter manually. To reset the solar inverters manually, follow the given steps: Step #1. Turn off the inverter by AC/DC toggle switch behind the inverter. Step #2. Turn off the Solar DC main switch. Step #3. Disconnect the main AC supply for safety purposes



How to reset a GX device to factory default settings: Download the venus-data-90-reset-all.tgz file. Copy the file onto a blank, freshly formatted FAT32 USB-drive/SD card (don't unpack or unzip that file, don't rename it). (such as discovered AC PV inverters).

HOW TO RESTORE THE PHOTOVOLTAIC INVERTER TO FACTORY DEFAULT

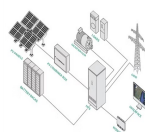
114KWh ESS



With the system safely powered down, the client located the reset button on their specific inverter model. Using a small tool, they pressed and held the reset button for several seconds, initiating the reset process. The inverter began its reboot sequence, and the client observed the indicators to ensure it started up correctly.



Identify the main breaker(s) labeled as "Photovoltaic" on your electrical service panel. Turn off the main breaker(s). Step 5 ??? Wait for 30 Seconds. Step 9 ??? Turn On Your Inverter. The final step in the reset process is to power up your inverter. Turn on your inverter by switching the toggle to the "On" position.



@EG4_Jarrett or @EG4-Jacob I also just tried using the wifi dongle and either received "set failed" (via localconnect) or "No permission" using the web page. I want to factory reset my inverter, and I'd like to ideally do it without any internet connection (no wifi dongle), but if the dongle is required, why won't the "set" work?



Most of the problems are solved just disconnecting the inverter. Turn off the inverter >utility > solar> battery. 30min later turn on battery solar utility then the inverter. All the factory parameters are on the user manual.



If your solar inverter has a problem, resetting it using the inverter reset button can often resolve the issue. It is a helpful troubleshooting step as it ensures the efficient operation of your solar power setup. In this ???

HOW TO RESTORE THE PHOTOVOLTAIC INVERTER TO FACTORY DEFAULT



It restores the inverter to its default settings, which can solve issues like overload, output faults, under-voltage. Click on the inverter reset button under Reset. So, the inverter will restart, and all settings and user data will get cleared. Then, find the breakers dedicated to your solar system, generally labeled as Solar PV. Next



A restart of the inverter can be performed by switching off the fuse of the inverter (or the circuit breaker of the inverter) overnight and switching it on again the next morning. This means that the inverter is disconnected on the DC side (because no PV is generated at night) as well as from the AC overnight, and the required waiting time to discharge the capacitors is ???