

# HOW TO SIMULATE SOLAR PHOTOVOLTAIC POWER GENERATION



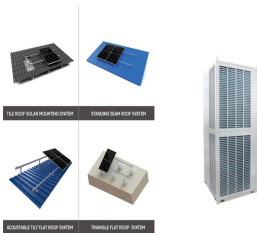
PV\*SOL online is a free tool for the calculation of PV systems. Made by the developers of the full featured market leading PV simulation software PV\*SOL, this online tool lets you input basic data like Location of your system, Load ???



Models. PVLIB Python provides a variety of models for simulating the performance of photovoltaic energy systems ?????. Originally ported from the PVLIB MATLAB toolbox developed at Sandia National Laboratories, it implements many of the models and methods used in PV performance modeling programs.. You'll find models for irradiance and clear sky data, ???



In renewable power generation, solar photovoltaic as clean and green energy technology plays a vital role to fulfill the power shortage of the country. During the last decade, severely researchers investigated modeling and simulation of solar PV modules to obtain the informative results.



Solar panel's maximum power rating. That's the wattage; we have 100W, 200W, 300W solar panels, and so on. How much solar energy do you get in your area? That is determined by average peak solar hours. South California and Spain, ???



Solar photovoltaic (PV) power generation is the process of converting energy from the sun into electricity using solar panels. Solar panels, also called PV panels, are combined into arrays in a PV system. PV systems ???

# HOW TO SIMULATE SOLAR PHOTOVOLTAIC POWER GENERATION



Solar energy comes from the limitless power source that is the sun. It is a clean, inexpensive, renewable resource that can be harnessed virtually everywhere. Any point where sunlight hits the Earth's surface has the potential ???



In this way, the solar energy system installed reduces demand for power from the utility when the solar array is generating electricity ??? thus lowering the utility bill. These types of solar energy systems are also known as "on grid" or "battery-less" and they make up approximately 98 percent of the solar power systems installed today

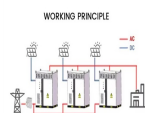


2MW / 5MWh  
Customizable

For the generation of electricity in far flung area at reasonable price, sizing of the power supply system plays an important role. Photovoltaic systems and some other renewable energy systems are, therefore, an excellent choices in remote areas for low to medium power levels, because of easy scaling of the input power source [6], [7].The main attraction of the PV ???



Photovoltaic (PV) is a method of generating electrical power by converting solar radiation into direct current electricity using semiconductor that exhibit the photovoltaic effect. In this paper presents a method of modeling and simulation of photovoltaic arrays in MATLAB using solar cell block from SimElectronics library.



Optimally, interannual variability of PV power production is calculated from full historical time series. In case that TMY data is used this is not possible and therefore a less accurate assumption of GHI variability is applied. Uncertainty of energy simulation model. This considers the imperfections of PV energy simulation models, which



Energy storage(KWh)  
**102.4kWh**  
Nominal voltage(Vdc)  
**512V**  
Outdoor All-in-one ESS cabinet



**Commercial and Industrial ESS**  
*Air Cooling / Liquid Cooling*

- Budget Friendly Solution
- Renewable Energy Integration
- Suitable Design for Flexible Expansion



Web: <https://twojaelektryka.com.pl>

# HOW TO SIMULATE SOLAR PHOTOVOLTAIC POWER GENERATION



Photovoltaic cells convert sunlight into electricity. A photovoltaic (PV) cell, commonly called a solar cell, is a nonmechanical device that converts sunlight directly into electricity. Some PV cells can convert artificial light into electricity. Sunlight is composed of photons, or particles of solar energy. These photons contain varying amounts of energy that ???



Keywords: Solar power Generation; Sustainable Energy; Smart Grid; Energy Efficiency; current and voltage-power characteristics of solar photovoltaic cells. The simulation of these parameters



Learn solar energy technology basics: solar radiation, photovoltaics (PV), concentrating solar-thermal power (CSP), grid integration, and soft costs. Solar energy technology doesn't end with electricity generation by PV or CSP systems. These solar energy systems must be integrated into homes, businesses, and existing electrical grids with



For more information on solar panels, read our solar panel guide. When you get your results, you can download them as a PDF for future reference. You can also register an account to save your results and come back to them later. This solar energy calculator estimates potential payments from a Smart Export Guarantee (SEG). The SEG was introduced



The conversion of sunlight, made up of particles called photons, into electrical energy by a solar cell is called the "photovoltaic effect" - hence why we refer to solar cells as "photovoltaic", or PV for short. Solar PV systems generate electricity by absorbing sunlight and using that light energy to create an electrical current.

# HOW TO SIMULATE SOLAR PHOTOVOLTAIC POWER GENERATION



The intermittent and stochastic nature of Renewable Energy Sources (RESs) necessitates accurate power production prediction for effective scheduling and grid management. This paper presents a comprehensive ???



One of the most important factors to consider when designing a solar photovoltaic (PV) system is the level of solar irradiance at a potential location. In this guide, we look at what solar irradiance is, how is it calculated, and how can you use RatedPower software to simulate and evaluate solar irradiance for your utility-scale PV projects.



A reliable and up-to-date value for the average generating yield of solar PV in the UK has several important uses. Firstly, it allows immediate calculation of the annual electricity generating output of solar PV from the current installed capacity. The installed solar PV generating capacity in September 2015 was 8.185 GWp .



Solar farms, also known as solar parks or solar fields, are large areas of land containing interconnected solar panels positioned together over many acres, to harvest large amounts of solar energy at the same time. Solar farms are ???



Export a PDF of the results of your simulation of the performance of your grid-connected photovoltaic system. By clicking on PDF, you download your simulation. PDF. O This part of PVGIS makes it possible to download the ???

# HOW TO SIMULATE SOLAR PHOTOVOLTAIC POWER GENERATION



$\eta$  is the yield of the solar panel given by the ratio : electrical power (in kWp) of one solar panel divided by the area of one panel. Example : the solar panel yield of a PV module of 250 Wp with an area of 1.6 m<sup>2</sup> is 15.6%. Be aware that this nominal ratio is given for standard test conditions (STC) : radiation=1000 W/m<sup>2</sup>, cell temperature=25 celcius degree, Wind speed=1 m/s, AM=1.5.



Installed peak PV power [Wp] : Peak power of your photovoltaic panels, This is the power that the manufacturer declares that the PV array can produce under standard test conditions, which are a constant 1000W of solar irradiation per square meter in the plane of the array, at an array temperature of 25°C.



76. JAWAHARLAL NEHRU NATIONAL SOLAR MISSION Make India a global leader in solar energy and the mission envisages an installed solar generation capacity of 20,000 MW by 2022, 1,00,000 MW by 2030 and of 2,00,000 MW by 2050. The total expected investment required for the 30-year period will run is from Rs. 85,000 crore to Rs. 105,000 crore. Between ???