

# HOW TO VIEW THE CAPACITY OF ENERGY STORAGE



How to determine the capacity of energy storage equipment? Considering the flexible potential and cost factors, the capacity of energy storage equipment can be reasonably determined in accordance with SSES and SES. The capacity of electricity storage equipment is closely related to the installed capacity of a renewable energy system.



What is energy storage capacity? Energy storage capacity is measured in megawatt-hours (MWh) or kilowatt-hours (kWh). Duration: The length of time that a battery can be discharged at its power rating until the battery must be recharged. The three quantities are related as follows: Duration = Energy Storage Capacity / Power Rating



What is a higher energy storage capacity system? This higher energy storage capacity system is well suited to multihour applications, for example, the 20.5 MWh with a 5.1 MW power capacity is used in order to deliver a 4 h peak shaving energy storage application.



How can a gravity energy storage system be scaled up? The energy storage capacity of a gravity energy storage system can be scaled up and optimized by using multiple weights.

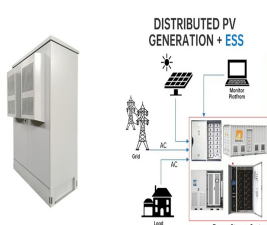


How to optimize battery energy storage systems? Optimizing Battery Energy Storage Systems (BESS) requires careful consideration of key performance indicators. Capacity, voltage, C-rate, DOD, SOC, SOH, energy density, power density, and cycle life collectively impact efficiency, reliability, and cost-effectiveness.

# HOW TO VIEW THE CAPACITY OF ENERGY STORAGE



What is the difference between power capacity and energy storage capacity? It can be compared to the nameplate rating of a power plant. Power capacity or rating is measured in megawatts (MW) for larger grid-scale projects and kilowatts (kw) for customer-owned installations. Energy storage capacity: The amount of energy that can be discharged by the battery before it must be recharged.



Energy density. Energy density is often used to compare different energy storage technologies. This parameter relates the storage capacity to the size or the mass of the system, essentially showing how much energy (Wh) can be stored per ???



Calculating the appropriate capacity for an energy storage system involves considering several key factors, including power demand, expected duration of use, battery efficiency, and overall system efficiency. Here's a step ???



In (Xiu-juan et al., 2019), considering the multiple types of demand response methods, an optimal allocation model of energy storage capacity was established with the total ???



Energy storage can be defined as the process in which we store the energy that was produced all at once. When electricity demand is low then the extra generation capacity is used to pump water into a higher reservoir from a ???

# HOW TO VIEW THE CAPACITY OF ENERGY STORAGE



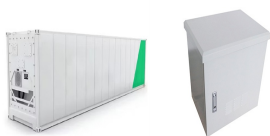
The SFS???led by NREL and supported by the U.S. Department of Energy's (DOE's) Energy Storage Grand Challenge???is a multiyear research project to explore how advancing energy storage technologies could impact ???



In this study, the flexible allocation strategy model proposed in previous studies is modified to determine the reasonable capacity of renewable energy systems, electricity ???



The role of Energy Storage This recommended practice provides a systematic approach for determining the appropriate energy capacity of a lead-acid battery to satisfy the energy requirements of the load for residential, commercial and ???



According to Power Technology's parent company, GlobalData, global energy storage capacity is indeed set to reach the COP29 target of 1.5TW by 2030. Rich explains that pumped storage hydroelectricity (PSH) has been ???



We present a method to estimate the capacity value of storage. Our method uses a dynamic program to model the effect of power system outages on the operation and state of ???

# HOW TO VIEW THE CAPACITY OF ENERGY STORAGE



A long-term trajectory for Energy Storage Obligations (ESO) has also been notified by the Ministry of Power to ensure that sufficient storage capacity is available with obligated entities. As per the trajectory, the ESO ???



When it comes to energy storage deployment, some understanding of residential user needs and installation work is required before determining the optimal capacity for their ???



The system size should be matched with the load and specific application. Storage capacity is typically measured in units of energy: kilowatt-hours (kWh), megawatt-hours (MWh), or megajoules (MJ). You will typically see capacities ???



In previous posts in our Solar + Energy Storage series we explained why and when it makes sense to combine solar + energy storage and the trade-offs of AC versus DC coupled systems as well as co-located versus ???



Figure 1: Storage installed capacity and energy storage capacity, NEM. Source: 2024 Integrated System Plan, AEMO. As shown in Figure 1, Coordinated CER will play a major role in helping Australia's transition to net ???

# HOW TO VIEW THE CAPACITY OF ENERGY STORAGE



Energy storage capacity: The amount of energy that can be discharged by the battery before it must be recharged. It can be compared to the output of a power plant. Energy storage capacity is measured in megawatt-hours (MWh) or ???



The total planned capacity for energy storage projects in the UK is 85GW/175GWh, including any submissions to local planning authorities, whether they are full applications or scoping/screening applications. Of this total, 20% ???