

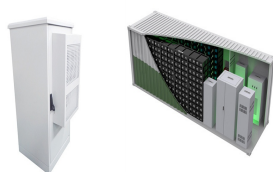
HOW TO WEED A SOLAR POWER GENERATION SITE



Reasons to consider a career in solar energy Here are some reasons to consider a career in solar energy: Job outlook Although industry-wide statistics are currently unavailable, the U.S. Bureau of Labor Statistics (BLS) projects that solar photovoltaic (PV) installer jobs could grow by 27% between 2021 and 2031. This growth rate is more than four ???



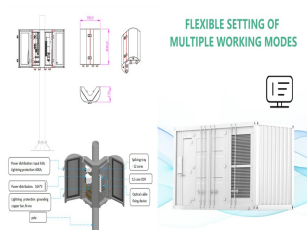
While developing a utility-scale solar power plant, various factors or criteria have to be taken care of in selecting the site location. Probable Site Selection of Photovoltaic Power Plant (PVPP) is a complex MCDM process, as the required site has to be climatically and geographically acceptable.



Thankfully, engineers at the world's largest photovoltaic power station group have found a good way to control weed the weeds ??? sheep. If the weeds grow too high, the shade could lead to a phenomenon called "hot spots," which could cause the solar panels to malfunction. Dry weeds could also cause fires in autumn and winter.



Solar photovoltaic (PV) power generation is the process of converting energy from the sun into electricity using solar panels. Solar panels, also called PV panels, are combined into arrays in a PV system. PV systems ???

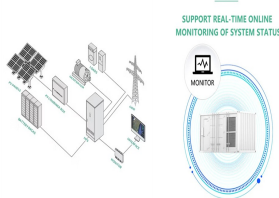


Weed or vegetation management is particularly important for ground-mounted solar systems. Tall weeds growing around the installation can create shading, which can negatively impact system production. It can also ???

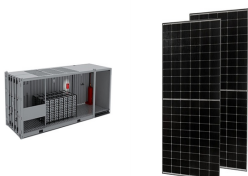
HOW TO WEED A SOLAR POWER GENERATION SITE



The Dalton Solar Farm operates in Whitfield County, while the Social Circle Solar Farm is situated in Walton County. In Camilla, GA, Mitchell County, the Camilla Solar Farm's eco-friendly power generation is ongoing. Bainbridge Solar Farm, also known as Cool Springs Solar, lights up Decatur County in Southwest Georgia, near the Florida border



However not all weeds are bad, some of them, taste quite good. If you want to dispose of those greens differently and give a different twist to your salads, you can add some dandelion leaves to it and enjoy the taste of your hard work! Final Thoughts. Weed control can be done in a more gentle and environment-friendly.



The local use of solar power generation leads to a more unstable demand power curve with limited possibilities to forecast it. Short-term solar forecast based on cloud imaging (Golden and Paulos 2015) can be used in a system that covers the entire urban area and can therefore more reliably forecast short-term solar irradiance dips and thus a



To maximize energy generation and the lifespan of solar panels, effective vegetation management is essential before you build a solar farm. Here are some reasons why: Energy Efficiency: Solar panels generate electricity when exposed to sunlight. When vegetation, such as tall grasses or shrubs, shades the panels, it reduces their efficiency.



This table shows the estimated power consumption of household appliances when used with a solar generator during a 24-hour period. With these examples, we now have the basic data we need to pick out the right size solar ???

HOW TO WEED A SOLAR POWER GENERATION SITE



By managing vegetation, the solar panels can receive maximum sunlight exposure, optimizing energy generation and increasing the project's overall productivity. 2. Sequester more carbon than turfgrass or bare ground treatments : In the Midwest, a solar-native grassland strategy has a potential carbon storage capacity that is 65% greater than agriculture ???



This is the essence of the photovoltaic effect, the scientific principle behind solar power generation. From DC to AC: The role of the solar inverter. The electricity generated by a single PV cell is minimal. Multiple PV cells are connected electrically to form a solar panel to power your home. But there's a catch: most home appliances run on



So, let's consider what solar weed control methods exist and their main disadvantages and advantages. Mechanical Methods: Mowing or Backfilling. Mechanical methods of solar farm weed control include mowing weeds, filling ???



A business can set up a 5 MW solar plant to use the power themselves and work towards their net zero goals. Or they can sell the power to other businesses through open access. There are several businesses in India that are doing both ??? using a portion of the power for captive use and selling the rest to other corporations.



Weed management in large-scale solar photovoltaic (LSS-PV) farms has become a great concern to the solar industry due to scarcity of labour and the ever-increasing price of pesticides, which opens

HOW TO WEED A SOLAR POWER GENERATION SITE



Solar power, also known as solar electricity, is the conversion of energy from sunlight into electricity, either directly using photovoltaics (PV) or indirectly using concentrated solar power. Solar panels use the photovoltaic effect to convert ???



Yes, there are rules and regulations that you must comply with for solar generation. If you connect your solar panels to the grid to sell back power, you must comply with Part 6 of the Electricity Industry Participation Code 2010. ???



In this context, the acceptance effects can be considered on different levels: On the socio-political level, it is about the overall societal discourse on solar power generation with GM-PV or agrivoltaic systems, which is strongly related to higher-level discourses such as energy transition and nuclear phase-out as well as the increase of organic food production.



Effective vegetation management is important for solar farms. Tall weeds growing around solar installations can create shading that reduces the functionality of the system. Cells can heat up to high temperatures causing permanent damage and potential fire. Undesirable vegetation can also obscure and damage fence lines.



The Global Solar Atlas provides a summary of solar power potential and solar resources globally. It is provided by the World Bank Group as a free service to governments, developers and the general public, and allows users to quickly obtain data and carry out a simple electricity output calculation for any location covered by the solar resource database.

HOW TO WEED A SOLAR POWER GENERATION SITE



Federal and state regulations dictate the sizing and options available for cabling. Cables that are specifically designed for DC solar power generation should always be used, and the cables must be assessed based on the cable voltage rating, the current carrying capacity of the cable, and the minimization of voltage drop due to the cabling.



Adaptive design: With this option, each power station (PS) can have different sizes (power) and different DC/AC ratios, so the design complies with the global parameters set by the user. This allows for power stations with different shapes that better fit the perimeter and irregularities of the site, resulting in more total installed capacity.



Xavan(R) weed control fabric is made by heat-bonding extra-thick fibers, and gaps among the fibers resist expansion, which makes this fabric a tough layer for weeds to penetrate. Xavan(R) weed control fabric has a clog-resistant structure, ???



The motivating factor behind the hybrid solar???wind power system design is the fact that both solar and wind power exhibit complementary power profiles. Advantageous combination of wind and solar with optimal ratio ???



However, Idaho Power's on-site generation tariffs allow customers to connect solar, wind, small-scale hydro, biomass, geothermal and fuel cell technologies as exporting systems. Other fuel types and stand-alone energy storage are allowed as non-exporting systems.

HOW TO WEED A SOLAR POWER GENERATION SITE



But other types of solar technology exist???the two most common are solar hot water and concentrated solar power. Solar hot water. Solar hot water systems capture thermal energy from the sun and use it to heat water for your home. These systems consist of several major components: collectors, a storage tank, a heat exchanger, a controller



Solar energy comes from the limitless power source that is the sun. It is a clean, inexpensive, renewable resource that can be harnessed virtually everywhere. Any point where sunlight hits the Earth's surface has the potential ???



Solar Power is the third studio album by New Zealand singer-songwriter Lorde was released on 20 August 2021, by Universal spired by the death of her retriever mix dog Pearl and visit to Antarctica in 2019, the album was written with producer Jack Antonoff to capture solipsism and summer escapism, mainly focused on Lorde's leisure time in her homeland New Zealand, ???



But it can be more than what it is when solar power comes into the mix. Hence, it's better to opt for solar-powered anti-weed bots instead. These robots not just remove weeds but also trim a garden like a lawnmower. All you need to do is sit back, relax, and press the bot's button, and you'll be able to achieve a perfectly trimmed