

HOW WIDE IS THE 18-TUBE SOLAR BRACKET



What are solar panel brackets? Solar Panel Brackets: The Ultimate Guide, types and best options. Solar panel brackets are an essential component of any solar panel system. They are used to secure solar panels onto rooftops, ground mounts, or other structures. The brackets are designed to withstand harsh weather conditions and provide a secure foundation for the panels.



How do solar panel brackets work? Solar panel brackets mount solar panels on roofs or other structures. The brackets are designed to securely hold the panels in place while allowing for proper air circulation, which keeps the panels cool and operating efficiently.



What size solar panel fits each mount? To see what solar panel size fits each mount safely, please see here: [Panel Sizes](#). If required, longer 750mm stays can be ordered to fit your solar panel if it is wider than 650mm, but please take caution not to overload the fittings or your boat rail etc. 10606 NOA Adjustable Solar Panel Mount, 25mm NOA fitting (B)



Why should I Choose fastensol solar panel mounting brackets? Perfectly accompanying our solar panel fixings & solar panel mounting rails. Choosing a selection results in a full page refresh. Solar Panel Mounting Brackets by Fastensol are the backbone of sturdy and reliable solar installations.



Do solar panel brackets need to be installed correctly? Proper bracket installation is key to ensuring the longevity and performance of a solar panel system. Solar panel brackets are an important part of the installation process and should be installed by a professional. The brackets must be installed correctly to ensure the safety and longevity of the solar panel system.

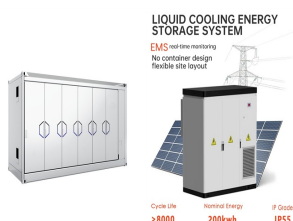
HOW WIDE IS THE 18-TUBE SOLAR BRACKET



What is a top-of-pole solar bracket? The top-of-pole solar bracket is a mounting system used to securely install solar panels on top of a pole or post. It is designed to provide stability and optimal positioning for the solar panels, allowing them to capture maximum sunlight for efficient energy generation.



DN12 solar tube back nut. DN12 x 3/4??? BSP solar pump station connector DN16 stainless steel tube solar connection set. DN16 back nut fiber washer and circlip set DN16 C clip back nut securing nut circlip. DN16 self sealing fiber washer. DN16 solar tube back nut. DN16 x 3/4??? BSP solar pump station connector. DN16 flat face 22mm connection



Brackets for mounting a single panel to any flat surface at an adjustable angle from 20° to 70°. Designed to accommodate solar panels with 900-910mm pre-drilled hole centres on the long side of the panel and 950-956mm across the ???



More buying choices ?18.39 (5 used & new offers) (For Solar Panels up to 1050mm Wide) Aluminium T-Shaped Mid Clamps 30mm/35mm Solar Panel Mounting Brackets Solar Mounting Rail Connector for Metal Roof, Tin Roof, Flat Roof, Sheet Roof, Black. 4.0 out of 5 stars 1.



Set of 2 Fixed Aluminium Solar Panel Mounting Brackets 670mm Key features: - Mounting brackets for solar panels up to 67cm wide - Ideal for bonding to the roof - no need for drilling - Suitable for motorhomes, campervans, caravans, vans and boats, but can also be used on other flat roofs - Enhanced security - once installed, the solar panel would not be easy to remove - ???

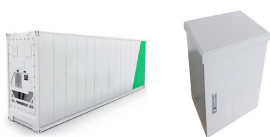
HOW WIDE IS THE 18-TUBE SOLAR BRACKET



These brackets provide a secure and adaptable framework for attaching solar panels to various surfaces, be it rooftops or ground structures. With their durable construction and easy installation, they ensure optimal panel positioning, ???



Pair of Aluminium Adjustable Solar Panel Mounting Brackets. Ideal for all Solar Panels between 990-1040mm wide (compatible with all our panels up to and including 340w) Angle adjustable between 35 and 45 degrees to maximize ???



Clamp Bracket 2.5??? square tube, for 18??? ground screw \$ 22.50. Part Number: 324-0007-69. Quantity. Add to cart. SunnyCal Solar, Lic# 990589, is a full service solar provider since 2006, offers complete design and installation services to residential and commercial customers. We serve Amador, Calaveras, Stanislaus and San Joaquin Counties.



These brackets feature "mounting slots" allowing a high degree of flexibility when mounting your panel and making them suitable for various sizes of solar panel. This pole mount bracket is suitable for panels ranging from 60 watts to 120 watts.



The Valsa New Rib/Wide Deck/Wide Span roof mounting structure provides a solution for installing solar panels onto metal sheet roofs flat or pitched roofs. These are found on commercial, industrial, and domestic buildings. A ???

HOW WIDE IS THE 18-TUBE SOLAR BRACKET



Anbte Solar Panel Mounting Brackets, 6 Pcs 200mm Aluminum Mounting Rail Include M5.5*30mm Screws + Rubber Pads, Solar Panel Holder Mounting Set for Tin Roof, Flat Roof, Sheet Roof, Metal Roof Bracket 6 Pieces Mounting Rail 200 mm Aluminium with 4 x End Clamp + 2 x Centre Clamp for Module Height 30 mm / 35 mm + 18 Pieces Screws + Rubber Pads



This section delves into how solar mounts contribute to a greener lifestyle, reducing reliance on fossil fuels and promoting renewable energy use. 11. Solar Panel Mounting Hardware in Different Regions. Solar ???



Solar Z brackets, for those who haven't had the pleasure of an introduction, are like the trusty sidekicks in the world of solar energy. With BougeRV's promise of an 18-month warranty, it's clear they're not just in it for the short haul. Buy on Amazon. 3. SUNMAK 16 Units Solar Panel Mounting Z Brackets. The wide application of



Solar photovoltaic bracket is a special bracket designed for placing, installing and fixing solar panels in solar photovoltaic power generation systems. The general materials are aluminum alloy, carbon steel and stainless steel. a wide range of types, and high requirements for manufacturing and design, so it is expensive. Square Tube



Ideal for all Solar Panels between 67 - 68cm wide (e.g perfect match for all our 200w aluminium framed panel) Longest length (wide) 712mm Angle adjustable between 35 and 45 degrees to maximize solar panel output, particularly during the winter months Includes nuts, bolts and washers for assembly Perfect for camper vans, caravans, canal boats or yachts

HOW WIDE IS THE 18-TUBE SOLAR BRACKET



Plain tile fixing kits for slate on roof solar panel sizes 2 to 16 panels can be used with all sized pv modules. = 18 brackets + 36 wood screws + 18 flashing kits + 18 T bolts + 18 nuts + 4 rails @ 3.65m + 4 rail connectors + 4 rail end caps + 4 universal end clamps + 10 universal mid clamps + 24 cable tidy clips + 24 cable ties.



To see what solar panel size fits each mount safely, please see here: Panel Sizes. If required, longer 750mm stays can be ordered to fit your solar panel if it is wider than 650mm, but please take caution not to overload the fittings or your ???



Adjustable Aluminium Solar Panel Mounting Brackets Pair of Aluminium Adjustable Solar Panel Mounting Brackets. For all Solar Panels up to 536mm wide Angle adjustable between 35 and 45 degrees to maximize solar panel ???



Specifically designed for solar power systems, these brackets are an essential component for any homeowner or business looking to harness the power of the sun. Constructed with premium-grade aluminum alloy, these Z type mounting brackets offer exceptional durability and corrosion resistance, ensuring absolute longevity and performance for years



DN12 solar tube back nut. DN12 x 3/4??? BSP solar pump station connector DN16 stainless steel tube solar connection set . DN16 back nut fiber washer and circlip set DN16 C clip back nut securing nut circlip. DN16 self sealing fiber washer. DN16 solar tube back nut. DN16 x 3/4??? BSP solar pump station connector. DN16 flat face 22mm connection

HOW WIDE IS THE 18-TUBE SOLAR BRACKET



Everything you need to buy solar panel mountings, fixings, brackets and rails are available from CEF. Perfect for roof, ground or wall mounted solar panels. Free next day delivery available. National 7:30am to 8pm - Mon-Fri 01763 272 717. >> Shatterproof Tubes; Lighting Luminaires



The right type of steel bracket for solar panels is critical to the longevity and performance of your bracket system and the right material will help you avoid costly downtime and repairs. Our steel PV support structures are strong enough for both roof and ground mount systems that be able to bear the substantial forces of the high wind speeds and panel weights themselves.



As an innovative solar mounting brackets for wide applied standing seam metal roofing. Our clamps can offer strong strength for solar panel system without drilling holes / piercing / damaging surface of roof surfaces. These solar mounting brackets for standing-seam metal sheets can be sold as a standard component for stock and re-selling.



DN12 solar tube back nut. DN12 x 3/4??? BSP solar pump station connector DN16 stainless steel tube solar connection set . DN16 back nut fiber washer and circlip set DN16 C clip back nut securing nut circlip. DN16 self sealing fiber washer. ???



Fig. 2 Functional diagram of an evacuated tube collector, here: type Solar-Lux 6 = 6 tubes (type Solar-Lux 12 = 12 tubes) 1 Manifold 2 CPC mirror for optimum sunlight utilisation 3 Heat transfer medium tubes 4 Glass-glass evacuated tubes for optimum thermal insulation (It is possible to replace a tube without having to drain the system).

HOW WIDE IS THE 18-TUBE SOLAR BRACKET



More buying choices ?18.39 (5 used & new offers) (For Solar Panels up to 1050mm Wide) Aluminium T-Shaped Mid Clamps 30mm/35mm Solar Panel Mounting Brackets Solar Mounting Rail Connector for Metal Roof, Tin Roof, Flat Roof, Sheet Roof, Black. 4.0 out of 5 stars 1.



Solar Roof Brackets: Installation Site: Trapezoid Metal / Tin / Iron Rooftop: Profile Material: SUS 304 Stainless Steel (A2-70) Fasten Parts: Self-tapping screws: (18) Aluminum Ground Mounts (22) Ground Mount Components (5) Carport Mounting (13) Mounting Components (108) Solar Roof Hooks (25)



Finding the right brackets for solar panels can be a challenge, particularly when considering roof type.. Using the wrong bracket can lead to a subpar installation, which is unacceptable.. Slate roofs require sturdy brackets, metal roofs demand corrosion-resistant ones, and older roofs need specialised brackets that can handle worn-out surfaces.



Clamp Bracket, 2??? square tube using 18??? Ground Screw \$ 22.50. Part Number: 324-0006-69. Quantity. Add to cart. SunnyCal Solar, Lic# 990589, is a full service solar provider since 2006, offers complete design and installation services to residential and commercial customers. We serve Amador, Calaveras, Stanislaus and San Joaquin Counties.