

HUAWEI PV INVERTER ALARM CODE



Why is my Huawei inverter alarm not working? If the alarm occurs frequently, contact your dealer or Huawei technical support. The input-to-ground insulation impedance has decreased during the inverter operation. If the alarm occurs accidentally, the external power cable may be abnormal temporarily. The inverter automatically recovers after the fault is rectified.



What are Huawei alarm codes? The following are some codes you may get from a Huawei inverter, which are called Alarm IDs. Huawei inverters display codes (known as Alarm IDs) for memory issues, failed internal tests, measurement issues, and other faults.



What are Huawei inverter error codes? Huawei inverter error codes occur due to grid disturbances, temperature issues, software issues, overcurrent, and other faults. Knowing each error code's meaning will help you determine the appropriate solution to get the solar power system back to normal. Here's a list of common Huawei inverter error codes culprits:



What does error code 2051 mean on Huawei inverter? However, if the alarm is frequent, contact Huawei technical support or your dealer to fix the issue. Error code 2051 is a major alarm ID that occurs when the input-to-ground insulation impedance decreases. Cause ID = 1 The inverter automatically recovers when the external power cable is abnormal temporarily.



How to replace a faulty Huawei inverter? Huawei's warranty replacement process is straightforward. First, the Hotline Team needs to confirm the replacement. Next, you'll have to follow these steps: Step 1: Fill out a Faulty Tag form with the details about your faulty inverter and send it to the Hotline Team.

HUAWEI PV INVERTER ALARM CODE



What should I do if my PV inverter fails? The inverter automatically recovers after the fault is rectified. If the alarm occurs frequently and affects the power production of the PV plant, check whether the output is short-circuited. If the fault persists, contact your dealer or Huawei technical support. The DC component in the grid current exceeds the upper threshold.



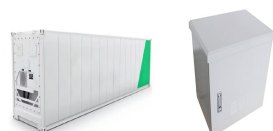
Inverter Alarm Reference. About This Document. Description of Alarm Reference Items. 2001 String Voltage High. 2002 DC arc Fault. 2003 DC Arc Fault. 2080 Abnormal PV Module Configuration. 2081 Optimizer Fault. 2082 Backup Box abnormal. 2085 Built-in PID operation abnormal. 2086 External Fan Abnormality.



Inverter Alarm Reference. About This Document. Description of Alarm Reference Items. 2001 String Voltage High. 2002 DC arc Fault. 2003 DC Arc Fault. The following is the mapping between PV strings and alarm cause IDs: [IDs 1???\n correspond to ???



Support Documentation FusionSolar Smart PV Controller SUN2000MA Operation & Maintenance User Manual. SUN2000-(20KTL, 29.9KTL, 30KTL, 36KTL, 40KTL)-M3 User Manual Grid Codes. Device Commissioning. Built-in PID Recovery. Rapid Shutdown. NS Protection. Acronyms and Abbreviations. Alarm Reference. For details about alarms, see Inverter



Inverter Alarm 2065 when Huawei SUN2000-450W-P2 or SUN2000-600W-P Smart PV Optimizer is Installed In general, please always update your FusionSolar App (including downloading the ???

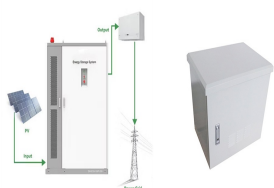
HUAWEI PV INVERTER ALARM CODE



Inverter Alarm Reference. About This Document. Description of Alarm Reference Items. 2001 String Voltage High. 2002 DC arc Fault. 2003 DC Arc Fault. 2080 Abnormal PV Module Configuration. 2081 Optimizer Fault. 2082 Backup Box abnormal. 2085 Built-in PID operation abnormal. 2086 External Fan Abnormality.



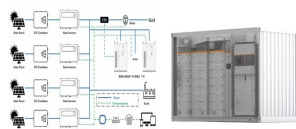
Support Documentation FusionSolar Smart PV Controller SUN2000MA Operation & Maintenance User Manual. (for Italy CEI0-21 Grid Code only) Acronyms and Abbreviations. Appearance. Figure 2-5 Appearance (1) LED indicator DC environmental alarm. N/A. Blinking red at short intervals (on for 0.2s and then off for 0.2s) AC environmental alarm.



Supporto Centro documenti FusionSolar Smart PV Controller SUN2000MB Funzionamento e manutenzione Maintenance Guide. Riferimento di allarme dell'inverter. About This Document. Descrizione degli elementi di riferimento degli allarmi. 2001 Tensione stringa elevata. 2002 Guasto arco CC. 2003 Guasto arco CC.



Inverter Alarm Reference. About This Document. Description of Alarm Reference Items. 2001 String Voltage High. 2002 DC arc Fault. 2003 DC Arc Fault. Check whether the PV string is connected to the device in reverse polarity. If yes, wait until the PV string current decreases to below 0.01 A, set DC SWITCH to OFF, and adjust the PV string



Support Documentation FusionSolar Smart PV Controller SUN2000HA Operation & Maintenance User Manual. SUN2000-(90KTL, 95KTL, 100KTL, 105KTL) Series User Manual Grid Codes. Contact Information. Digital Power Customer Service. Acronyms and Abbreviations. Alarm Reference. For details about alarms, see Inverter Alarm Reference. Translation.

HUAWEI PV INVERTER ALARM CODE



Hallo zusammen, ich habe einen HUAWEI SUN2000 8KTL-M1 gekoppelt mit einer Huawei luna2000 10 kWh. Die Anlage läuft eigentlich richtig gut. Nur leider bekomme ich immer morgen wenn der Wechselrichter aus dem Standby geht ???



Alarm Code: Description: Solution: OV-G-V 01. 1010. The PV terminal of the inverter is grounded during operation. 1. Check that the PV string connected to the inverter is grounded, and use a multimeter to check the DC gear. Vbus-Sam. 102A.



Inverter Alarm Reference. About This Document. Description of Alarm Reference Items. 2001 String Voltage High. 2002 DC arc Fault. 2003 DC Arc Fault. (Note: If the PV??? is set to positive offset, the voltage between the PV??? of the device and the ground should be greater than 0 V to clear the alarm; if the PV+ is set to negative offset



Do solar inverters need maintenance? Solar inverters are designed so that they require little to no maintenance. However, like every other home appliance, using your solar inverters with care will make them function optimally and last longer.



Inverter Alarm Reference. About This Document. Description of Alarm Reference Items. 2001 String Voltage High. 2002 DC arc Fault. 2003 DC Arc Fault. (If the device appearance is abnormal, remove the DC terminals after the PV string current decreases to below 0.01 A.) Contact your vendor or technical support. 2-9, 13-19.



FusionSolar introduces users to the datasheet, user manual, quick guide, and installation video of a solar inverter to address their frequently asked questions. Huawei FusionSolar provides new generation string inverters with smart management technology to create a ???

HUAWEI PV INVERTER ALARM CODE



Inverter Alarm Reference. About This Document. Description of Alarm Reference Items. 2001 String Voltage High. 2002 DC arc Fault. 2003 DC Arc Fault. 2080 Abnormal PV Module Configuration. 2081 Optimizer Fault. 2082 Backup Box abnormal. 2085 Built-in PID operation abnormal. 2086 External Fan Abnormality.



Check whether the PV string current is obviously lower than the currents of other PV strings. If yes, check whether the PV string is shaded. If the PV string is clean and not shaded, check whether any PV module is faulty. The following is the mapping between PV strings and alarm cause IDs: IDs 1???n correspond to PV strings 1???n respectively.



Description: String Reversed. The PV string is reversely connected. Cause ID 1 = PV1, Cause ID 2 = PV2. What to do: Contact your solar installer to check whether the PV string is reversely connected to the inverter.



Huawei Solar Inverter Document Public 2018-11-30
eu_inverter_support@huawei Page2, Total3 If the inverter stops production and the Alarm ID 1 (Low Insulation Resistance) or 318313- 1 - means a short circuit occurs between the PV ???



Support Documentation FusionSolar Smart PV Controller SUN2000MA Operation & Maintenance User Manual. SUN2000-(3KTL-10KTL)-M1 User Manual Grid Code. Device Commissioning. Resetting Password. Rapid Shutdown. AI Energy Management Assistant (EMMA) Acronyms and Abbreviations. 8.3 Troubleshooting. For details about alarms, see the Inverter Alarm

HUAWEI PV INVERTER ALARM CODE



Support Documentation FusionSolar Smart PV Controller SUN2000MA Operation & Maintenance User Manual. SUN2000-(20KTL, 29.9KTL, 30KTL, 36KTL, 40KTL)-M3 Series User Manual Grid Codes. Device Commissioning. Built-in PID Recovery. Rapid Shutdown. NS Protection. see Inverter Alarm Reference.



1. Sungrow single-phase and three-phase inverter models SG2K-S / SG2K5-S / SG3K-S / SG3K-D / SG3K6-D / SG4K-D / SG4K6-D / SG5K-D / SG6K-D and Inverter side faults for single-phase hybrid models SH3K6-30 / ???



Inverter Alarm Reference. About This Document. Description of Alarm Reference Items. 2001 String Voltage High. 2002 DC arc Fault. 2003 DC Arc Fault. 2080 Abnormal PV Module Configuration. 2081 Optimizer Fault. 2082 Backup Box abnormal. 2085 Built-in PID operation abnormal. 2086 External Fan Abnormality.



Instructions for Resolving Inverter Alarm 2065 When Installing Huawei SUN2000-450W-P2 or SUN2000-600W-P Smart PV Optimizers. 0-Article. SKE SOLAR; HUAWEI SOLAR. HUAWEI SOLAR; HOME SOLUTIONS; Inverter Alarm 2065 when Huawei SUN2000-450W-P2 or SUN2000-600W-P Smart PV Optimizer is Installed Code of Conduct. Questions and ???



Inverter Alarm Reference. About This Document. Description of Alarm Reference Items. 2001 String Voltage High. 2002 DC arc Fault. 2003 DC Arc Fault. 2080 Abnormal PV Module Configuration. 2081 Optimizer Fault. 2082 Backup Box abnormal. 2085 Built-in PID operation abnormal. 2086 External Fan Abnormality.

HUAWEI PV INVERTER ALARM CODE



Solar inverter 4. Connect cables between the PV string and the solar inverter. 4 Power-On Commissioning You can add an optimizer on the Quick settings screen and set its physical layout on the Physical layout design of PV modules screen of the solar inverter app. For details, see the corresponding solar inverter quick guide or FusionSolarApp



Inverter Alarm Reference. About This Document. Description of Alarm Reference Items. 2001 String Voltage High. 2002 DC arc Fault. 2003 DC Arc Fault. 2004 DC Overvoltage. 2005 DC in Reverse Polarity. The number of optimizers connected in series in the PV string is below the lower threshold.



Currently we have faced one issue at site when when String Current backfeed alarm comes then inverter trip, not generating power. As per user manual instruction string current backfeed alarm 2012 is warning alarm at this case inverter reduced output power & generate output power but in this case case inverter goes to tripping mode.