

# ICELAND BEST SOLAR PANEL SPECIFICATIONS



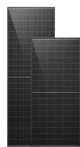
How efficient are solar panels? Depending on which combination of materials they use, the end product's efficiency rating can be anywhere from 7% to 13%. This is substantially lower than most other types of solar panels, though this fact is usually reflected in their relatively low prices.



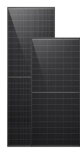
What is the best type of solar panel? The best type of solar panel is monocrystalline. They're more efficient than any other panel currently on the market, meaning you'll be making the best use of your roof space. And they have longer lifespans than all their competitors, which boosts their return on investment beyond that of polycrystalline panels or solar tiles.



What are the different types of solar panels in the UK? The most common type of solar panel in the UK is monocrystalline. While installers used to favour polycrystalline panels, which explains why you'll see blue solar arrays all over the country, black monocrystalline panels have quickly become the most popular type.



What are the different types of solar panels? Discover the six main types of solar panel, including monocrystalline, polycrystalline, and thin-film. Thin-film solar panels are flexible sheets that can wrap around objects, making them perfect for properties with a limited amount of unobstructed roof space, or mobile homes like recreation vehicles and houseboats.



Are thin-film solar panels efficient? ARCO Solar released the first commercial thin-film solar panel, the G-4000, in 1986, and they've been on the market ever since. Unfortunately, thin-film's efficiency is poor compared to other domestic panels. Depending on which combination of materials they use, the end product's efficiency rating can be anywhere from 7% to 13%.

# ICELAND BEST SOLAR PANEL SPECIFICATIONS



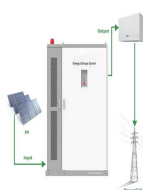
How long do solar panels last? They also have a longer lifespan than any other type, on average, often outlasting their already lengthy performance warranties, which can stretch to 30 years. Monocrystalline is currently the most cutting-edge solar material, too ??? bifacial solar panels are usually made with monocrystalline, for instance.



What are 500W Solar Panel Specifications? On the basis of the solar panel manufacturers and solar panel model, two 500-watt solar panels can have varying specifications. However, in general, these are 500W solar ???



Specifications of 100-Watt Solar Panels. The main specifications that you want to look out for when purchasing a 100-watt solar panel would be the weight, the dimensions, cell type maximum power, maximum power voltage, maximum power current, maximum system voltage, and the warranty. Lion Energy 100-Watt Solar Panel Suitcase. Weight: 20lb



If you are trying to compare one PV panel to another, it is helpful to understand the key technical parameters - or solar panel specifications - that impact performance. The panel spec sheet will tell you about the panel's electrical ???



The Solar Panel will achieve best results when proper battery maintenance is regularly performed. 50WATT MONOCRYSTALLINE SOLAR PANEL SPECIFICATIONS 540mm 645mm 35mm Model SMR1050 Short circuit Current 3.00A Construction Monocrystalline Tolerance ?3% Peak Power 50W Frame Anodized Aluminium

# ICELAND BEST SOLAR PANEL SPECIFICATIONS



By understanding the Module Specifications section of a solar module datasheet, you can better compare different solar panels and choose the one that best meets your needs. Electrical Characteristics The Electrical ???



Best Solar Panels Compatible With Bluetti EB3A/EB55/EB70S. August 3, 2024 April 13, 2024 by Jesse. we'll take a look at the input limitations of the Bluetti power stations and what you need to know when connecting solar panels. Specifications ??? The Input Limits.



When exploring the best solar panels for your home, the Goldi Green 36GN poly panels emerge as a superior choice for their class-leading power capacity. At 170Wp, these panels are an ideal addition to residential rooftops and integrate seamlessly with varied applications such as building-integrated PV systems, home lighting solutions



Explore the solar photovoltaic (PV) potential across 14 locations in Iceland, from Isafjordur to Thorlakshofn. We have utilized empirical solar and meteorological data obtained from NASA's POWER API to determine solar PV potential and ???



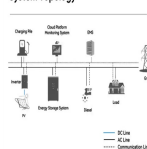
2 ? A solar panel data sheet gives you an idea of the product's performance, efficiency, and durability. Knowing these parameters allows you to select a panel that suits your energy needs, climate, and budget. Whether ???

# ICELAND BEST SOLAR PANEL SPECIFICATIONS



By understanding the Module Specifications section of a solar module datasheet, you can better compare different solar panels and choose the one that best meets your needs. Electrical Characteristics The Electrical Characteristics section of a solar module datasheet provides detailed information about the module's electrical properties.

System Topology



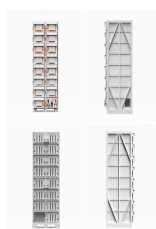
5. The Significance of Solar Panel Dimensions and Weight For homes with complex or aging roofs, the physical dimensions and weight of solar panels are critical. While most residential roofs can support the weight of solar panels, considerations like panel size and weight are paramount for ensuring a safe, compatible installation.



Best Solar Panels Compatible With Bluetti EB3A/EB55/EB70S. August 3, 2024 April 13, 2024 by Jesse. we'll take a look at the input limitations of the Bluetti power stations and what you need to know when connecting ???



I have an AC500+B300s on it's way, and I'd like to maximize the amount of PV power with the least amount of panels. My goals is to determine the max optimum solar panel config??? and then purchase that config in small increments of 2 panels at a time (as budget allows) Does anyone have any recommended rigid roof roof mount panels they would ???



The best solar panel in 2024 is SunPower Maxeon 6.; The best solar panel in terms of warranty is the Project Solar Evolution Titan 445, offering a lifetime warranty of 99.9 years.; The best solar panel for the average 3-bedroom home is the REC Alpha Pure-R.; Over the last few years, it has become increasingly popular to install solar panels for homes across the UK.

# ICELAND BEST SOLAR PANEL SPECIFICATIONS



In this article, we list 15 of the best solar panels for high temperatures. Additionally, we discuss how high temperature affects your PV system's power output and more. Foreword. Climatebiz experts design, research, fact-check & edit all work meticulously. Technical specifications of a solar panel. As you can see, the pane's thermal



The Maximum Power Current rating ( $I_{mp}$ ) on a solar panel indicates the amount of current produced by a solar panel when it's operating at its maximum power output ( $P_{max}$ ) under ideal conditions. In other words,  $I_{mp}$  reflects how much electrical current a panel can provide when exposed to the optimal amount of sunlight and performing at its best.



Quality solar panels undergo rigorous testing under various environmental stressors to ensure quality and safety. Solar panel certifications are printed on a solar panel's spec sheet. Common solar panel testing and certification ???



The specifications outlined in a solar panel's datasheet provide insights into its expected performance under specific conditions. When shopping for solar panels, it can be hard to identify the most crucial metrics to pick the best solar panel.. ???



If you are trying to compare one PV panel to another, it is helpful to understand the key technical parameters - or solar panel specifications - that impact performance. The panel spec sheet will tell you about the panel's electrical power production, including its efficiency and how it operates with changing temperatures, as well as

# ICELAND BEST SOLAR PANEL SPECIFICATIONS



Solar Panel Tilt Angle in Iceland. So far based on Solar PV Analysis of 14 locations in Iceland, we've discovered that the ideal angle to tilt solar PV panels in Iceland varies between 54° from the horizontal plane facing South in Isafjordur and 53° from the horizontal plane facing South in Thorlakshofn.. These tilt angles are optimised for maximum annual PV output at each location ???



Max power output (Watts): 50 watt Optimum operating voltage (Vmp): 18.6V Optimum operating current (Imp): 2.69A Operating temperature: (-40°C to +90°C) (-40°F to 194°F) Weight: 7.72 lb / 3.5 kg Under ideal conditions (typically known as standard test conditions - STC) a 12v 50 watt solar panel will produce 50 watts of DC power output with 18.6V & 2.69A ???



A quick glance at a solar panel's specification sheet will reveal the power generation and conversion efficiency of a system. If you don't know what the numbers mean, it may as well be written in another language. Unless you want to fall for a solar panel scam or get a system that doesn't deliver the ROI you expect, it's time to brush up.



Solar panel size refers to the total amount of power a solar panel can generate over a period of time; Solar panel dimensions refers to the physical size of a solar panel; Solar panel sizes and wattage range from 250W to 450W, taking up 1.6 to 2 square metres per panel.



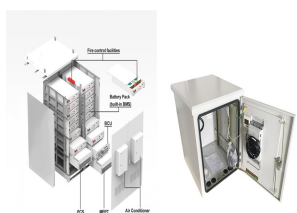
Solar Panels Network USA embarked on a project to optimize solar energy systems for residential and commercial clients by enhancing the understanding and application of solar panel specifications. The goal was to improve system performance and client satisfaction by ensuring that the best-suited solar panels were selected for each unique



# ICELAND BEST SOLAR PANEL SPECIFICATIONS



While REC solar panels are a premium and highly bankable product, they are also competitively priced, making them the clear top choice for consumers and the best solar panel brand of 2022. Q Cells. Founded in 1999 in Germany, Q Cells is one of the largest solar panel manufacturers in the world and a popular choice among homeowners.



Practice makes perfect: Reading Q CELLS solar panel datasheet. The best way to get familiar with solar datasheets is to read one. Let's pick a panel and look through its specs. This specification measures how much the panel's efficiency drops as its temperature rises above 77°F. Panels with lower temperature coefficients are more



Below are the best solar panels in the 425-watt range that you can install in your home. Best Value: Canadian Solar HiKu PERC Series Mono Solar Panels; Best Durability: LG NeON R High Efficiency 66-Cell 425W Solar Panels; Most Affordable: Mission Solar Energy (MSE) MSE PERC 72 SX6W Black Anodized 425 Solar Panels



From backup power to bill savings, home energy storage can deliver various benefits for homeowners with and without solar systems. And while new battery brands and models are hitting the market at a furious pace, the best solar batteries are the ones that empower you to achieve your specific energy goals. In this article, we'll identify the best solar batteries in ???



Your solar panel choice matters. Maximise your savings and enjoy the peace of mind that comes with solar's top durability, reliability and efficiency,<sup>1</sup> Based on datasheet review of websites of top 20 manufacturers per IHS, as of January 2020. all backed by the industry's leading warranty.<sup>2</sup> Based on October 2019 review of warranties on manufacturer websites for top 20 ???