

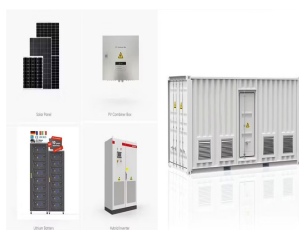
INDEPENDENT BATTERY ENERGY STORAGE PRINCIPLE



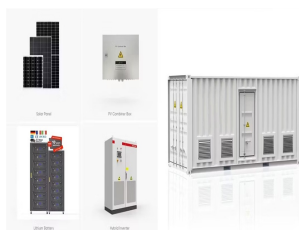
What is battery energy storage system (BESS)? Battery energy storage system (BESS) has been applied extensively to provide grid services such as frequency regulation, voltage support, energy arbitrage, etc. Advanced control and optimization algorithms are implemented to meet operational requirements and to preserve battery lifetime.



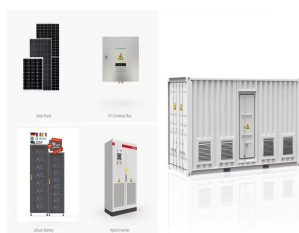
What is a battery energy storage system? Battery energy storage systems provide multifarious applications in the power grid. BESS synergizes widely with energy production, consumption & storage components. An up-to-date overview of BESS grid services is provided for the last 10 years. Indicators are proposed to describe long-term battery grid service usage patterns.



Why should a battery energy storage system be co-located? In doing so, BESS co-location can maximise land use and improve efficiency, share infrastructure expenditure, balance generation intermittency, lower costs, and maximise the national grid and capacity. The battery energy storage system can regulate the frequency in the network by ensuring it is within an appropriate range.



Who uses battery energy storage systems? The most natural users of Battery Energy Storage Systems are electricity companies with wind and solar power plants. In this case, the BESS are typically large: they are either built near major nodes in the transmission grid, or else they are installed directly at power generation plants.



What is a full battery energy storage system? A full battery energy storage system can provide backup power in the event of an outage, guaranteeing business continuity. Battery systems can co-locate solar photovoltaic, wind turbines, and gas generation technologies.

INDEPENDENT BATTERY ENERGY STORAGE PRINCIPLE



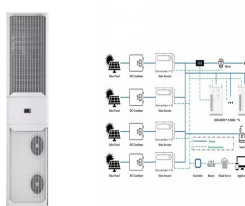
Are battery energy storage systems harmful to the environment? Several studies have identified that battery energy storage systems can pose threats to the environment and human health. However, evaluating the exact environmental impact of batteries in electrical systems is a gap that requires further research efforts.



A comparative overview of large-scale battery systems for electricity storage. Andreas Poullikkas, in Renewable and Sustainable Energy Reviews, 2013. 2.5 Flow batteries. A flow battery is a form of rechargeable battery in which electrolyte containing one or more dissolved electro-active species flows through an electrochemical cell that converts chemical energy directly to electricity.



Download Citation | On Jan 21, 2022, Tong Chen and others published Analysis of Independent Energy Storage Business Model Based on Lithium-ion Batteries System | Find, read and cite all the



Energy storage systems play a crucial role in the overall performance of hybrid electric vehicles. Therefore, the state of the art in energy storage systems for hybrid electric vehicles is discussed in this paper along with appropriate background information for facilitating future research in this domain. Specifically, we compare key parameters such as cost, power a?]



Components of a Battery Energy Storage System. Key components include the battery, which can range from lithium-ion to lead-acid depending on the application. Each type offers different advantages such as energy density, cycle life, and maintenance requirements. The inverter is critical for converting electricity efficiently, ensuring that

INDEPENDENT BATTERY ENERGY STORAGE PRINCIPLE



BESS is a stationary energy storage system (ESS) that stores energy from the electricity grid or energy generated by renewable sources such as solar and wind. or it can be a completely independent system to be placed outside the BESS. Energy Management System (EMS) Pingback: Understanding Battery Energy Storage System (BESS) | Part 3

114KWh ESS



FIVE STEPS TO ENERGY STORAGE fi INNOVATION INSIGHTS BRIEF
3 TABLE OF CONTENTS EXECUTIVE SUMMARY 4 INTRODUCTION 6
ENABLING ENERGY STORAGE 10 Step 1: Enable a level playing field
11 Step 2: Engage stakeholders in a conversation 13 Step 3: Capture the
full potential value provided by energy storage 16 Step 4: Assess and
adopt a?|



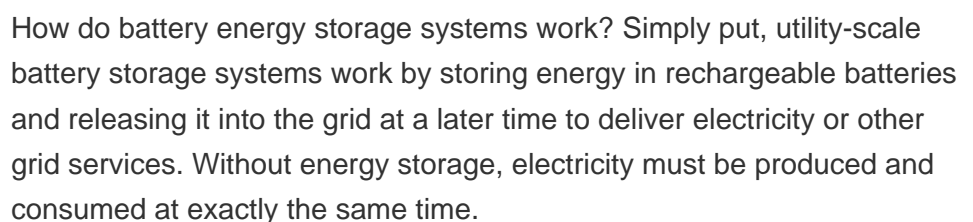
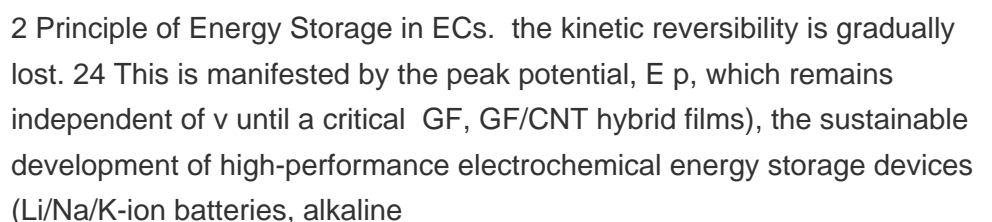
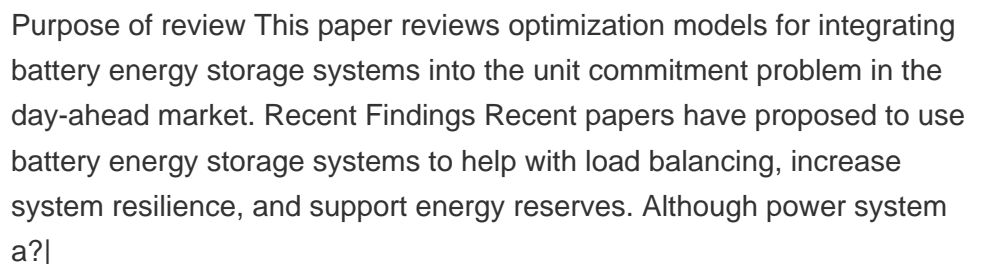
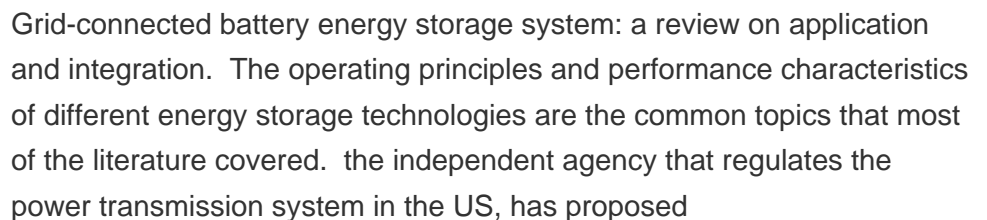
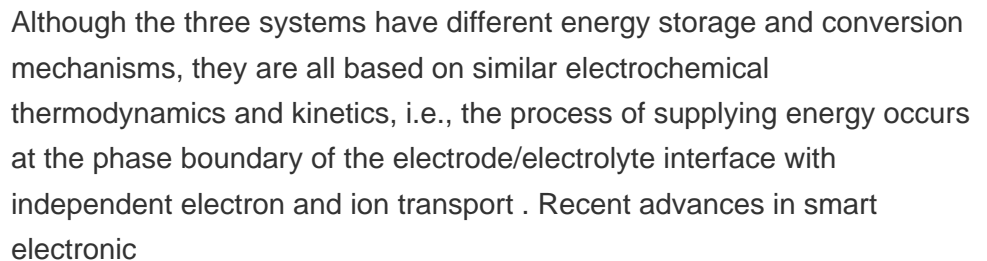
A battery energy storage system (BESS) captures energy from renewable and non-renewable sources and stores it in rechargeable batteries (storage devices) for later use. A battery is a a?|



Battery energy storage systems (BESSes) act as reserve energy that can complement the existing grid to serve several different purposes. Potential grid applications are listed in Figure 1 and categorized as either power or energy-intensive, i.e., requiring a large energy reserve or high power capability. They can also be classified according to



With interest in energy storage technologies on the rise, it's good to get a feel for how energy storage systems work. Knowing how energy storage systems integrate with solar panel systems a??as well as with the rest of your home or businessa??can help you decide whether energy storage is right for you.. Below, we walk you through how energy storage systems work a?|



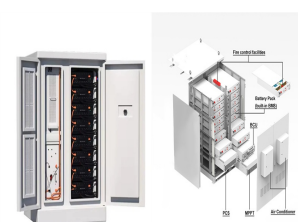
INDEPENDENT BATTERY ENERGY STORAGE PRINCIPLE



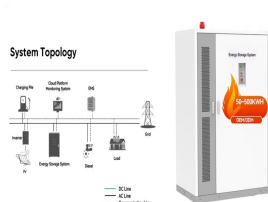
1 Introduction. As early as September 2020, China proposed the goal of "carbon peak" and "carbon neutrality" (Xinhua News Agency, 2020). As a result, a new power system construction plan with renewable energy as the primary power source came into being (Xin et al., 2022). With the large-scale access to renewable energy with greater randomness and volatility to the grid, a?



3.1 Battery energy storage. The battery energy storage is considered as the oldest and most mature storage system which stores electrical energy in the form of chemical energy [47, 48]. A BES consists of number of individual cells connected in series and parallel [49]. Each cell has cathode and anode with an electrolyte [50].



In recent years, battery fires have become more common owing to the increased use of lithium-ion batteries. Therefore, monitoring technology is required to detect battery anomalies because battery fires cause significant damage to systems. We used Mahalanobis distance (MD) and independent component analysis (ICA) to detect early battery faults in a a?



Battery Energy Storage Systems offer a wide array of benefits, making them a powerful tool for both personal and large-scale use: Enhanced Reliability: By storing energy and supplying it during shortages, BESS improves grid stability and reduces dependency on fossil-fuel-based power a?

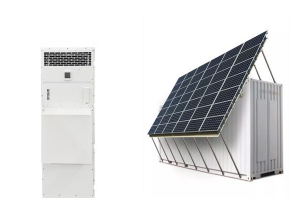


Hydrogen energy storage Synthetic natural gas (SNG) Storage Solar fuel: Electrochemical energy storage (EcES) Battery energy storage (BES)a?c Lead-acida?c Lithium-iona?c Nickel-Cadmiuma?c Sodium-sulphura?c Sodium ion a?c Metal aia?c Solid-state batteries

INDEPENDENT BATTERY ENERGY STORAGE PRINCIPLE



The search for suitable electrode materials is crucial for the development of high-performance Na-ion batteries (NIBs). In recent years, significant attention has been drawn to two-dimensional (2D



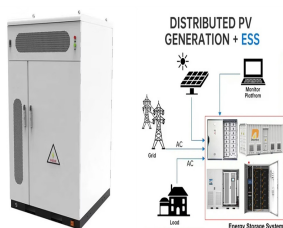
Discover what BESS are, how they work, the different types, the advantages of battery energy storage, and their role in the energy transition. Battery energy storage systems (BESS) are a a?|



Battery Energy Storage is needed to restart and provide necessary power to the grid a?? as well as to start other power generating systems a?? after a complete power outage or islanding situation (black start). Finally, Battery Energy Storage can also offer load levelling to low-voltage grids and help grid operators avoid a critical overload.



This chapter provides an overview of energy storage technologies besides what is commonly referred to as batteries, namely, pumped hydro storage, compressed air energy storage, flywheel storage, flow batteries, and power-to-X a?|



By definition, a battery energy storage system (BESS) is an electrochemical apparatus that uses a battery to store and distribute electricity. A BESS can charge its reserve capacity with power a?|

INDEPENDENT BATTERY ENERGY STORAGE PRINCIPLE



Key learnings: Battery Working Principle Definition: A battery works by converting chemical energy into electrical energy through the oxidation and reduction reactions of an electrolyte with metals.; Electrodes and Electrolyte: The battery uses two dissimilar metals (electrodes) and an electrolyte to create a potential difference, with the cathode being the a?]



In recent years, there has been growing interest in the development of sodium-ion batteries (Na-ion batteries) as a potential alternative to lithium-ion batteries (Li-ion batteries) for energy storage applications. This is due to the increasing demand and cost of Li-ion battery raw materials, as well as the abundance and affordability of sodium.



EERE is working to achieve U.S. energy independence and increase energy security by supporting and enabling the clean energy transition. The United States can achieve energy independence and security by using renewable power; improving the energy efficiency of buildings, vehicles, appliances, and electronics; increasing energy storage capacity; and a?]



Battery Energy Storage Systems (BESS) have become a cornerstone technology in the pursuit of sustainable and efficient energy solutions. This detailed guide offers an extensive exploration of BESS, beginning with the fundamentals of these systems and advancing to a thorough examination of their operational mechanisms.