

INSTALL BACKFLOW TROUGH ON PHOTOVOLTAIC BRACKET



Where should a backflow preventer be installed? There are three options for backflow preventer installation: inside a vault, inside a building, or outside and above ground in an enclosure. This backflow preventer installation guide details each method and highlights why placing backflow preventers above ground and outside is not just best practice, but the clear choice for installation.



Why should you install a solar panel bracket? The purpose of installing the bracket is to better fix the solar panel. If there is a more convenient and feasible method to fix the solar panel. PVMars will definitely recommend it to you, and effective solutions are based on solar panels' characteristics and your on-site installation environment.



Why should you install a backflow preventer in a vault? Backflow preventers are designed to stop cross connections from happening. Backflow preventer installation in a vault is counterproductive. Vaults flood. We've heard this for years from water jurisdictions and backflow testers alike throughout the country.



Why does my buck converter backflow? Normally all MOS-FETs used in buck converters have a bypass diode built in, that will cause the backflow. It's in the very nature of buck converters. -between the panels and your buck converter (if you need e.g. the built-in display or Bluetooth to keep working).



Where should a backflow valve be installed? Some manufacturers have materials which show where they expect backflow valves to be installed: outside and above ground. Additionally, backflow manufacturers make the relief valve discharge rates available to the public for all their RPZ models and sizes. To the right, you'll see the discharge rates for Wilkins RPZs from 1/4" to 10".

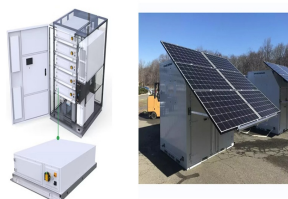
INSTALL BACKFLOW TROUGH ON PHOTOVOLTAIC BRACKET



What is a backflow preventer? A backflow preventer allows water to flow exclusively in one direction. Its sole job is to prevent drinking water contamination from backflow events. A backflow preventer typically extends above ground, although it is common to see many installed inside the building or in underground vaults.



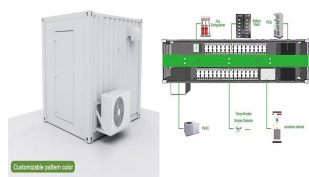
EcoFlow's rigid solar panels come with a EcoFlow Tilt Mount Bracket for easy rooftop installation. The components include four fixing brackets, two adjustable brackets, and screws. This should be all you need to mount ???



Stainless Steel Photovoltaic Bracket. FOR RETRO FITTING SOLAR PANELS . TO A METROTILE ROOF SYSTEM. Incredibly durable 2mm thick stainless steel bracket enabling secure and easy installation of photovoltaic panels on a Metrotile roof system. ??? Securely screwed into battens through to rafters, recommended every 600mm. ??? Quantity of brackets



Learn how to install a backflow preventer with this easy guide. Protect your water supply from contamination with our clear, step-by-step instructions. Skip to content. Family Owned & Operated Since 1928. Fairfax (703) 250 4200; Arlington (703) 524 1250; Home; About Us; Our Services; Testimonials; Blogs; Locations. Alexandria-VA;



Mounting of Solar PV panels onto slate coverings require our slate roof fixing brackets. This is one of our roof PV fixing products that marry together to provide a high quality platform for solar panels. Solar PV slate mounting bracket. Slate solar roof fixing brackets are used in conjunction with solar panel roof rails.

INSTALL BACKFLOW TROUGH ON PHOTOVOLTAIC BRACKET



BRACKETS FOR SECURING PHOTOVOLTAIC PANELS, WITHOUT DRILLING. Sun-Age specializes in mounting solar panels on roof without drilling, as we were the first company in the world to patent non-drilling anchoring systems using special new-generation adhesives.. To date, thousands of installations have been completed with full satisfaction from both installers and ???



A durable, 2mm thick stainless steel bracket enable secure and easy installation of photovoltaic panels on a Metrotile roof system. The brackets have been specially designed to be screwed into the rafter centres and sit between the lapping tiles without kicking-up the tiles; reducing the need to screw through the tiles, invalidating the guarantee.



Begin by finding the center of your gutter and making a mark. Pre-drill a hole at the mark, using a drill bit that is slightly smaller than the diameter of your screw. Screw the bracket into the hole, using a screw that is long enough to go through the thickness of ???



4. Installation 4. Installation Dimensions of wall bracket: Please see Figure 4.4 and Figure 4.5 for instruction on mounting the inverter. Figure 4.3 Inverter wall mounting. 10. 11. 4.2 Mounting the Inverter The inverter shall be mounted vertically. The steps to mount the inverter are listed below: Suitable fixing screws Bracket 1.

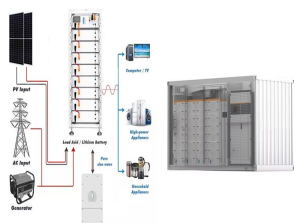


?? Add an anti-backflow device and install a two-way electric meter or current monitoring device at the photovoltaic grid connection point. When current is detected flowing ???

INSTALL BACKFLOW TROUGH ON PHOTOVOLTAIC BRACKET



These Backflow Currents (BFCs) pass through the Surge Protective Devices (SPDs), which are already installed in the design, causing high transient voltages through the system components [1], [2]



Get ready to unravel the mystery of PV panel mounting brackets and unlock the key to maximizing your solar investment. 1. Flush Mount. This type of bracket is designed to be installed flush against a surface such as a roof or a wall. The PV panels are then attached to the bracket, creating a seamless and low-profile installation.



The photovoltaic system with CT(Current Transformer) has anti-backflow function, which means that the electricity generated by photovoltaics is only supplied to loads, preventing excess electricity from being sent to the grid.



the utility grid and the PV input. C Ningbo G in lon g Technolo gie s Co., Ltd. PV Grid Ti e Inverter In stallatio n and Operation Manual Solis 4G Single Phase Inverter Ver 1.8 Part # 1 Description PV g rid te inv et 2 Wall/pole bracket 3 Lo cking s rews 4 5 Number 1 1 2 2 pairs Table 1.1 Parts list Grounding screw (at ched in ground point at



To ensure brackets are installed in a straight line, install a single ProteaBracket on each end of the roof at a measured, consistent distance from the bottom edge of the roof. Use a string line between the two brackets. Mount the remaining ProteaBrackets along the string line, directly into the sheeting of the trapezoidal rib of the roof.

INSTALL BACKFLOW TROUGH ON PHOTOVOLTAIC BRACKET



Backflow is something that naturally happens in renewable energy systems, and it's important to pay close attention to it to make sure the power grid stays reliable and intact. By understanding what causes backflow ???



Print this Article. Installation Criteria. The very first step to take is to determine which code is the correct one to comply with. A backflow prevention assembly can be installed as a service protection assembly or an internal protection assembly. A service protection assembly is installed at the point of service to a water user; this type of assembly is installed to protect the ???



The Clenergy PV-ezRack (R) SolarRoof??? is designed for residential and commercial tile roof applications. This system allows installation on tile roofs. Withstands wind speeds up to 88 metres per second; Robust design and high-quality materials. Corrosion resistance is achieved through anodised structural grade aluminium and stainless steel



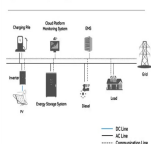
How Much Does Solar Bracket Installation Cost? Solar bracket installation costs can change based on the type and number of brackets, installation complexity, and location. Usually, the cost of setting up a solar panel system ranges from a few hundred to several thousand dollars. This includes the brackets' price, labour, and extra materials



PV panels mounted on roof Workers install residential rooftop solar panels. The solar array of a PV system can be mounted on rooftops, generally with a few inches gap and parallel to the surface of the roof. If the rooftop is horizontal, the array is mounted with each panel aligned at an angle. If the panels are planned to be mounted before the construction of the roof, the roof can ???

INSTALL BACKFLOW TROUGH ON PHOTOVOLTAIC BRACKET

System Topology



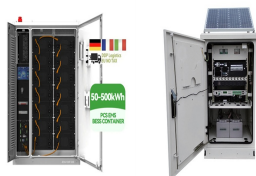
Photovoltaic bracket can be classified in the form of connection mode, installation structure and installation location. According to the connection form, it is divided into welding type and assembly type; according to the installation structure, it is divided into fixed type and day by day type; according to the installation location, it is divided into ground type and roof type, etc.



3??? Ground mounting structures: concrete base solar panel ground mounts, commonly used mounting type, suitable for both large and small solar projects, not special requests on soil condition; b. ground screw mounting brackets, suitable for large projects, professional ground screw driver, large-scale installation can be implemented save installation costs and maximize ???



4.4 PV Input Cable Installation Scrolling through the displayed options (the UP and DOWN keys); Access and modify the settings (the ESC and ENTER keys). Figure 3.2 Keypad Select the mounting height of the bracket and mark the mounting holes. For brick walls, the position of the holes should be suitable for the expansion bolts.



Prepare the installation area: Clear the area where the backflow preventer will be installed. Remove any obstructions or debris that may interfere with the installation. Install the backflow preventer: Follow the manufacturer's instructions for installing the specific type of backflow preventer you have chosen. Generally, the installation



In the quest for renewable energy solutions on a global scale today, PV brackets, as the core components of solar power generation systems, play an +86-21-59972267 mon ??? fri: 10am ??? 7pm sat ??? sun: 10am ??? 3pm

INSTALL BACKFLOW TROUGH ON PHOTOVOLTAIC BRACKET



The long-term stability and safe operation of the solar photovoltaic system can be ensured by selecting the appropriate solar photovoltaic bracket and correctly installing and maintaining it. If you are interested in solar photovoltaic brackets,, please feel free to consult us through info@sunforson , Sunforson provides a series of solar



"The fitting of PV panel installations to combustible roofs should be avoided wherever possible" (source - RC62). Solar Energy: Energy Storage Systems (ESS) For countries such as the UK which have variable weather patterns, the amount of electrical power generated from a solar PV installation will tend to vary. Solar PV panels also



Photovoltaic support Supplier, Solar Bracket, Wire Rope Manufacturers/ Suppliers - Taizhou Suneast New Energy Technology Co., Ltd. Ltd is a high-tech enterprise specializing in solar photovoltaic bracket design, production, installation and related consulting services. Company headquarters is located in the famous "hometown of stainless



Securing Mounting Brackets. The first step in fitting solar PV panels on a tiled roof is securing the mounting brackets. It is essential to do this without compromising the integrity of your roof structure. In conclusion, embracing solar energy through the installation of solar panels on tiled roofs not only helps reduce carbon emissions



3. Installation 3. Installation 3.4 Electrical Connections 3) Align the mounting plate with the holes, Insert the hexagon bolt (M10X40)through the Inverter design uses PV style quick-connect terminal. The top cover needn't be opened mounting ???

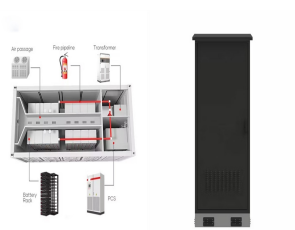
INSTALL BACKFLOW TROUGH ON PHOTOVOLTAIC BRACKET



There are three options for backflow preventer installation: inside a vault, inside a building, or outside and above ground in an enclosure. This backflow preventer installation guide details each method and highlights why placing backflow ???



China leading provider of PV Panel Mounting Brackets and Adjustable Solar Panel Bracket, Jiangsu Guoqiang Singsun Energy Co., Ltd. is Adjustable Solar Panel Bracket factory. GQ-F Fixed Installation System For Fish Farming And Power Generation Underneath Hot Dipped Galvanized Steel



Nevertheless, the induced current in the metal frame and PV bracket would affect the EM field within the lightning surge could be suppressed through changing the installation method and number of bypass diodes. M. Metwaly, M. K. et al.: Sustaining electrification service from photovoltaic power plants during backflow lightning