

INSTALL PHOTOVOLTAIC PANELS 20 EACH



Photovoltaic (PV) Panels: 15-20%: 40-60: Residential & Commercial:
Thin-Film Panels: 10-12%: Reach out to your local authority to learn about solar panel installation permits in India. Your choice of solar panels, inverters, and mounts affects how well the system works. Each piece plays a part in the system's efficiency and how long



Each solar panel occupies about 1.6???. Consequently, a 20kW solar system would need between 65??? and 121??? of space, depending on the efficiency of the panels chosen. This range provides options for both residential and commercial properties, accommodating ???



Solar panels offer savings between ?270 and ?640 for most homes each year; More than 1.39 million homes in the UK have solar panels, The best solar panel installers offer 20-30-year product warranties, and at least 10-year long workmanship warranties. How long does a solar panel installation take? Solar panel installation usually



Photovoltaic (PV) systems are one of the most important renewable energy sources worldwide. Learning the basics of solar panel wiring is one of the most important tools in your repertoire of skills for safety and ???



I you are going to install all the panels in one line you would need a space of approximately 1 m x 5.56 m (each panel having a size of 1 m x 0.556 m) on your rooftop. There you go. You have a rough estimate of the space required by the solar panels of your system.



3. Make space for the solar panel accessories (solar inverter, cables and solar batteries, if desired), for instance in a plant room. 4. Plan a day for installation. 5. Erect the scaffolding (this can be done by your supplier or by ???)

INSTALL PHOTOVOLTAIC PANELS 20 EACH



Overview of Solar Panel and Battery Installation. Residential systems typically use monocrystalline or polycrystalline panels, each with its pros and cons. Determine System Size: Use this data to decide how many panels you need. A standard home may require 20-25 solar panels for full power replacement. Selecting Equipment. Choose Panels



The impact of direction on solar panel output. Your solar panel system's direction is one of the biggest factors in determining its output. This chart below uses an average of 26 arrays in Yorkshire that all have peak power ratings of 4kWp, and confirms that south-facing is the best direction.



In this article we'll take a deep dive into the whole solar panel Installation process and look at a walk-through of a typical solar panel system. Before we get into it, we need to do some housekeeping. You don't need an ???



Solar Panel Sizes UK Key Points: So in this case, you'd need something like 10 solar panels installed on your roof, each at a power of 400 kW. In terms of roof size, you will need a roof of around 20 square metres to install 10 panels on average. But please bear in mind that you will need to consult the assistance of a solar panel



Suppose, in our case the load is 3000 Wh/per day. To know the needed total W Peak of a solar panel capacity, we use PFG factor i.e. Total W Peak of PV panel capacity = $3000 / 3.2$ (PFG) = 931 W Peak. Now, the required number of PV panels are = $931 / 160W$ = 5.8. This way, we need 6 numbers of solar panels each rated for 160W.

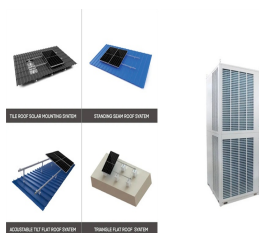


A 4kW solar panel system is suitable for the average home in the UK and costs around ?5,000 ??? ?6,000.; The estimated average yearly savings you can expect with a solar panel system range from ?440 to ?1,005.; If you install a 4kW solar panel system, you will break even on your

INSTALL PHOTOVOLTAIC PANELS 20 EACH

investment in about 8 years. Since solar panels have a lifespan of about 25 years, you will be ???

INSTALL PHOTOVOLTAIC PANELS 20 EACH



Solar panels could reduce your bills and even earn money by generating electricity you can sell back to your energy company. But the average solar panel system of 3.5kWp will cost around ?7,000 to install, according to estimates from the Energy Saving Trust.



How long does solar panel installation take? While each project will be different, it generally takes around two days for a solar panel installation to be completed. Almost half of this time will be taken up by constructing the scaffolding needed to reach the roof. As such, if you're installing a panel on the side of your home, the process



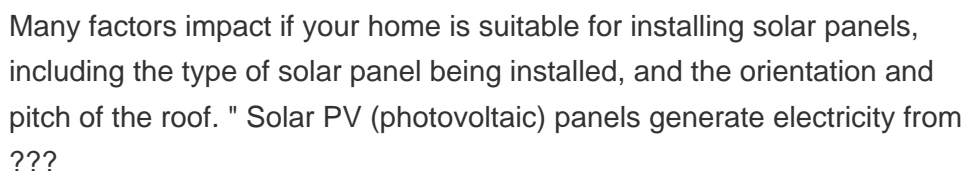
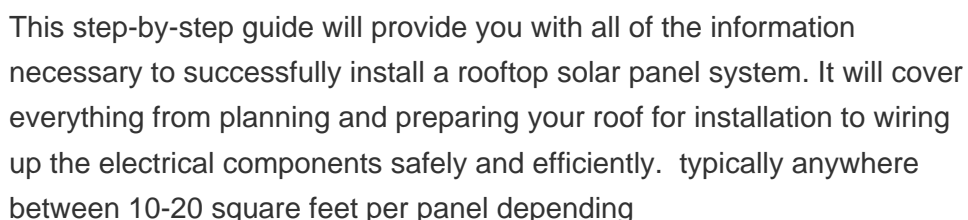
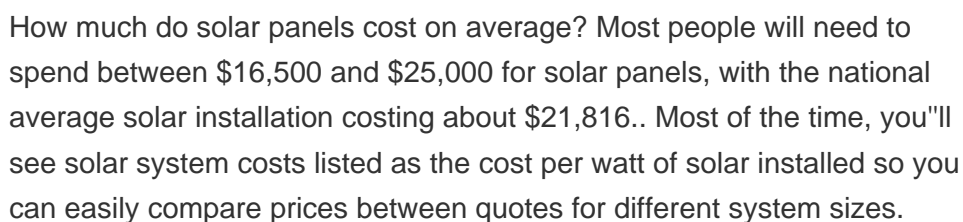
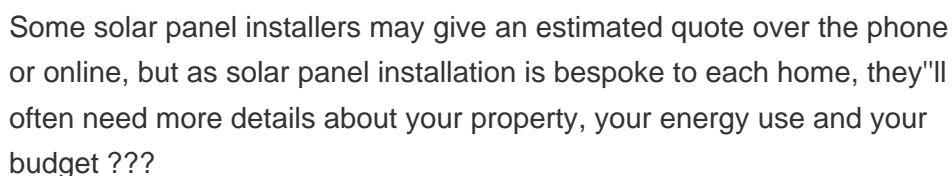
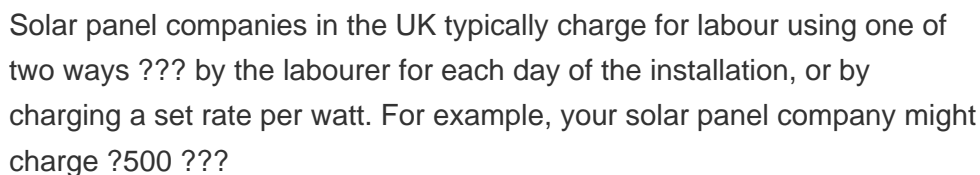
How to install solar panels wiring . Solar panel wiring installation is not overly complicated if you understand basic electricity procedures. First, there is a positive wire and a grounding wire. Most solar components have a port for a positive wire and a grounding wire. Next, you would use a ferrule to attach the wires to the components



Any implementation of a sustainable photovoltaic solar energy system implies the optimization of the resources to be used. Therefore, it is the basis for the design and assembly of solar installations to optimize renewable energy production.. To achieve optimal conversion of solar energy, it is essential to know the solar path, the profile of the needs, and the ???



Increased Energy Generation: Bifacial solar panel installations can capture sunlight from both sides, increasing energy generation by up to 20% compared to monofacial solar panels. This makes them more efficient in certain conditions, such as when light reflects off surfaces like snow, sand, or nearby structures.



INSTALL PHOTOVOLTAIC PANELS 20 EACH



The average solar panel cost has declined dramatically over the last decade, and solar systems now offer more value to homeowners than they ever have before. The chart below shows the solar panel installation cost breakdown since 2010. Home solar systems typically feature 10-20 panels to produce enough power to offset 100% of the average

APPLICATION SCENARIOS



PV Panel Installation: Four 550+ watt photovoltaic panels, each backed by a 20+ year warranty, including all necessary wiring and breakers.

Electrical Services: Comprehensive installation services, along with a compliance certificate, ???



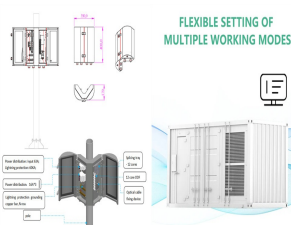
With most solar PV installations, all panels in a PV array connect to each other. So, if one panel gets less light than the others the whole system's performance suffers. If some shade is present for periods of the day or you're splitting panels up over east and west facing roofs, it may be worth considering micro-inverters.



The two main types of panels are photovoltaic panels and solar thermal panels; photovoltaic panels will convert thermal energy into electricity, and solar thermal panels turn solar energy into heat. These can be used in ???



PV Panel Installation: Four 550+ watt PV panels, each with a 20+ year warranty, all necessary wiring and breakers included. Electrical Services: Comprehensive electrical installation services are part of the package, along with a compliance ???



More and more households in the UK are turning towards solar panels for their energy production. Over 3,000 installations are being carried out each week according to trade association Solar Energy UK.. The solar panel installation process, however, remains relatively unknown. You might

INSTALL PHOTOVOLTAIC PANELS 20 EACH

be wondering if you can take care of it yourself or if you'd be better to call in a professional.

INSTALL PHOTOVOLTAIC PANELS 20 EACH



Preliminary Steps for Solar Panel Installation. Before starting with your rooftop solar panel system, make sure to do some key steps. Solar Panels (330W) 20: 6,60,000: Solar Inverter (5kW) 1: 1,00,000: Mounting Brackets: 20: 50,000: Electrical Wiring: 1: This guide focuses on each step to install rooftop solar panels. It covers the