

INSTALL PHOTOVOLTAIC PANELS ON THE EXTERIOR WALL OF THE FACTORY



How to install vertical solar panels? Vertical solar panels will require special mounting brackets for their installation process. You can install wall-mountable solar panels either parallel to your home walls or in the form of a canopy. In winter, the wall-mount solar system's electrical power production is at the maximum level.



Can solar panels be installed on a factory roof? The roofs of factories are often the ideal place to install solar panels. As factories are energy-intensive buildings, installing a solar PV system on the roof of a factory ensures free power can be generated to run everything underneath it.



Can solar panels be mounted vertically on a wall? An emerging trend in home solar energy is mounting solar panels vertically on fences and boundary walls. This ingenious approach capitalises on unused vertical space and offers many advantages, ranging from amplified energy production to elevated property aesthetics. Almost everything about mounting panels on a wall applies here, too.



Are wall-mount solar panels easy to install? You can install wall-mountable solar panels either parallel to your home walls or in the form of a canopy. In winter, the wall-mount solar system's electrical power production is at the maximum level. Wall-mount solar PV modules are easy to install, maintain, and clean as compared to rooftop solar PV modules. What's in this Article?



Can solar PV be installed on warehouse roofs? Installing solar PV on warehouse roofs means generating free electricity for the warehouse and adjacent buildings, such as offices. Warehouse and logistics firms can significantly reduce their energy bills with a solar PV system.

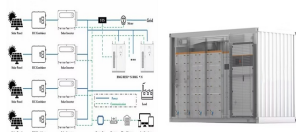
INSTALL PHOTOVOLTAIC PANELS ON THE EXTERIOR WALL OF THE FACTORY



Can solar panels be installed on walls? Rules and regulations vary across different locations. In the UK, where I live, according to the planning portal, installing solar panels and equipment on residential buildings is categorised as permitted development. Mounting panels on walls is not optimal for year-round production.



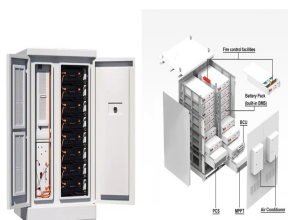
Installing Solar PV on your factory roof or ground offers numerous benefits, from reducing operational costs to enhancing sustainability. Factories are often high-energy consumers, and solar panels allow your business to generate a ???



What Are The Cost Factors For Solar System For Factory. a) The size of the solar panel system. This will be determined by the factory's available roof space, electricity usage, and financial goals. As systems scale ???



Making the whole roof out of solar panels can be a fantastic option as installing solar panels is an asset to the home because of the savings in electricity and feed-in tariff payments. find an entry on a wall by looping the cable over the roof, clamps can be used to fasten the cables to the roof. If you have a solar panel system installed

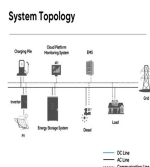


Onyx Solar's photovoltaic (PV) glass solutions for curtain walls and spandrels are transforming modern architecture by integrating energy-generating technologies seamlessly into building designs. Curtain walls ???also known as glass facades and exterior glazing systems ???convert previously unused spaces into energy assets, enhancing both aesthetics and functionality .

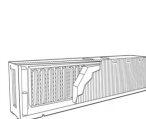
INSTALL PHOTOVOLTAIC PANELS ON THE EXTERIOR WALL OF THE FACTORY



3.3.5 There shall be no storage or services below the PV installation. 3.3.6 PV modules, wirings, switchboard assemblies and other equipment shall not cover any ventilation system on the roof (e.g. smoke control/ extraction systems or air well). 3.4 Emergency Disconnection 3.4.1 Manual emergency shut-off system for the disconnection of the PV



We warmly welcome you to buy cost-efficient solar bipv building-integrated photovoltaic glass curtain wall from our factory. Building Exterior. Usage. Outdoor Wall Cladding Decoration. Thickness. 5+9A+5mm. In such ???



From garden walls to fencing or exterior facades, our outdoor panels add charm to any property. Browse through the full range of exterior wall cladding below to find the right style for your home. Reimagine your outdoor space and enhance the character of your home with our collection of external wall cladding.



If you have a lot of land space, you could also consider ground-mounted solar panels, or solar panel fences, another type of vertical solar panel system. How much do wall-mounted solar panels cost? A homeowner in a ???



An electrical conduit is a thick-walled tubing made of metal, plastic, or fiber used to protect and route electrical wires. During your solar energy system installation, the specialist will route the conduit from each solar array to your solar inverter, ???

INSTALL PHOTOVOLTAIC PANELS ON THE EXTERIOR WALL OF THE FACTORY



Install solar panels on your factory buildings to slash energy bills, gain financial independence and reduce your carbon footprint. You'll be able to make use of untapped space on factory buildings, warehouses and surrounding land to ???



Mounting Harnessing the Sun: Detailed Guide to Installing Solar Panels on a Wall. Installation Tips, Advantages of Vertical Mount and More Home solar energy system owners have traditionally focused on installing panels on ???



West Coast Corrugated Ltd is one of the biggest commercial solar panel installations we've completed, installing 1,166 Canadian Solar panels. The system provides 290,000kWh of electricity each year, saving 130 tonnes of CO2 every 12 months. Type of Installation ??? Canadian Solar PV; Size of Installation ??? 1,166 Panels; Yearly Output



Photovoltaic (PV) systems are one of the most important renewable energy sources worldwide. Learning the basics of solar panel wiring is one of the most important tools in your repertoire of skills for safety and practical reasons, after all, residential PV installations feature voltages of up to 600V.



In this guide, we'll explain a typical solar panel installation from start to finish, as well as what all the hardware does, and where on your property you can install the panels. If you're interested in how much you could save with a solar & battery system, click the button below, enter a few details, and we'll generate an estimate.

INSTALL PHOTOVOLTAIC PANELS ON THE EXTERIOR WALL OF THE FACTORY



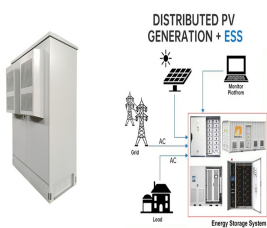
Easy installation process and maintenance: Wall-mount solar panels are easy to install and maintain. Unlike rooftop solar PV modules, scaling, and installation does not require climbing the roof and drilling holes into the rooftop of your home which sometimes can cause water leakage through the rooftop. Additionally, wall-mount panels also provide a better visual representation.



Wall-mounted solar panels offer several advantages for homeowners looking to generate their own electricity. Here are some of the benefits of choosing wall-mounted solar panels: 1. Easy Installation: Wall ???



Installing wall-mounted solar panels is something our partners are trained for and take great pride in. The process is intricate, but with their expertise, it becomes a streamlined operation. Here's how our professionals ???



Solar batteries, also known as solar energy storage systems or solar battery storage, are devices that store excess electricity generated by solar panels (photovoltaic or PV panels). They work in conjunction with a solar PV system to capture surplus energy produced during sunny days when the sun's power output is at its peak.



They serve both as an energy source and a component of the exterior envelope. From rain screens and curtain walls to louvres, solar facades can be tailored to enhance the building's appearance while generating clean energy. The upfront cost of installing solar panel facades varies by location and project scale. On average, UK

INSTALL PHOTOVOLTAIC PANELS ON THE EXTERIOR WALL OF THE FACTORY



Discover the ideal solar panel sizes for your installation. Learn about common dimensions, types of panels, and space requirements for residential and commercial solar systems. China's reduction in photovoltaic export tax rebates may lead to an increase in module prices, with current solar panel prices in Europe below 6 cents per watt



When considering wall-mounted solar panels, it's essential to evaluate several factors to ensure your home is suitable for such an installation. Start by examining the solar potential of the walls on your property. A south-facing wall is preferable in the Northern Hemisphere as it receives the most sunlight throughout the day. In contrast, for those in the Southern Hemisphere, a north-facing



- TELECOM CABINET
- BRAND NEW ORIGINAL
- HIGH EFFICIENCY

PV Integrated Wall Panel. Drainage . Heat. The perforated metal skin helps ventilate the cavity of the wall - helping to cool down and increase the efficiency of the system. Fresh air in . cutting down on high labor costs and allowing for a more efficient installation process. Commercial Applications . To play, press and hold the enter key



Mount the fuse box and charge controller on the support wall, then connect them. Install the inverter on the support wall. Connect it to the fuse box and charge the controller to complete the electrical setup. Step 2: Work on the solar panel connections. Secure at least two parallel solar panel support rails onto the shed roof.



Quixotic Systems of New York City installs wall-mounted arrays parallel with walls, with about a 6-in. gap between the panel and the building to prevent buildup. The company's first vertical solar project was a 37-kW array ???

INSTALL PHOTOVOLTAIC PANELS ON THE EXTERIOR WALL OF THE FACTORY



Standard Precast Panels: Typically made in a factory setting, these are robust and can be used for structural or decorative purposes. The installation of exterior concrete wall panels is a process that requires careful planning and ???



Suppose, in our case the load is 3000 Wh/per day. To know the needed total W Peak of a solar panel capacity, we use PFG factor i.e. Total W Peak of PV panel capacity = $3000 / 3.2$ (PFG) = 931 W Peak. Now, the required number of PV panels are = $931 / 160W = 5.8$. This way, we need 6 numbers of solar panels each rated for 160W.



There are a large number of formally approved solar panel installations in conservation areas, including on roofs that face the road. If the solar panels are going to be installed on the exterior walls of a block of flats, or if any of the panels will end up sitting within one metre of the edge of a flat roof. Commercial Solar Panel



Find out if rafters or trusses are better for solar panel installation. Skip to content. 1-503-395-1943; hello@greenridgesolar ; Calculator; About Us. Our Team; Ceiling joists then help secure the rafters and the exterior walls, and a ridge beam or ridge board is placed at the center of the roof, which helps to support the roof rafters



Fire resistance of roof coverings esp roof integrated PV panels, PV tiles & PV slates ; Cable penetrations through walls, ceilings and floors must not assist the spread of fire ; Adequate ventilation of heat producing equipment e.g solar PV inverters, solar PV panels and PV Cables. Use of certified and correctly applied materials

INSTALL PHOTOVOLTAIC PANELS ON THE EXTERIOR WALL OF THE FACTORY



Save up to 60% on your factory's energy bills! Solar panel installation available with Standard Purchase & Power Purchase (PPA) Agreements. Areas we cover. SOUTH WEST; Dorset. Bournemouth. Christchurch. To discuss your solar panel installation options further, don't hesitate to contact our team today on 0330 124 2941 ??? we are happy to help!



An emerging trend in home solar energy is mounting solar panels vertically on fences and boundary walls. This ingenious approach capitalises on unused vertical space and offers many advantages, ranging ???



How to Install a Wall-Mounted Solar Panel System? Vertical solar panel installation necessitates unique gear due to the naturally steep slopes of wall-mounted solar panels. They're more difficult to install than solar panels that are positioned on the ground or on the roof and lie flat or have a little incline. Strong fastening is essential