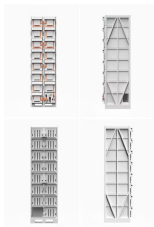
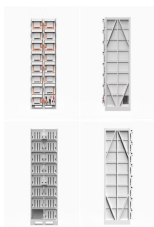


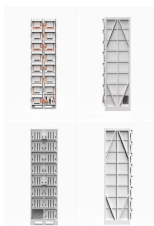
# INSTALLATION METHOD OF ENERGY STORAGE DEVICE FOR NEW ENERGY VEHICLES



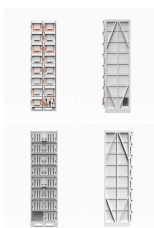
Are energy storage systems necessary for electric vehicles? Energy storage systems (ESSs) required for electric vehicles (EVs) face a wide variety of challenges in terms of cost, safety, size and overall management. This paper discusses ESS technologies on the basis of the method of energy storage.



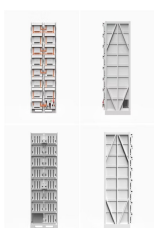
What is a vehicle energy storage device? With the present technology, chemical batteries, flywheel systems, and ultracapacitors are the main candidates for the vehicle energy storage device. The chemical battery is an energy storage device that stores energy in the chemical form and exchanges its energy with outside devices in electric form.



What is energy storage system in EVs? energy storage system in EVs. They are used in the combination of batteries and Fuel cells in Hybrid electric vehicles. The both components . the electrode, and  $d$  is the distance between electrodes. proportional to the distance between the plates. Hence increases energy stored. Research for the development of ultracapacitors



Which energy storage sources are used in electric vehicles? Electric vehicles (EVs) require high-performance ESSs that are reliable with high specific energy to provide long driving range . The main energy storage sources that are implemented in EVs include electrochemical, chemical, electrical, mechanical, and hybrid ESSs, either singly or in conjunction with one another.



Which energy storage systems are suitable for electric mobility? A number of scholarly articles of superior quality have been published recently, addressing various energy storage systems for electric mobility including lithium-ion battery, FC, flywheel, lithium-sulfur battery, compressed air storage, hybridization of battery with SCs and FC ,,,,,,,.

# INSTALLATION METHOD OF ENERGY STORAGE DEVICE FOR NEW ENERGY VEHICLES



What is a single energy storage system (ESS)? A single energy storage system (ESS) is commonly used in electric vehicles (EVs) currently. The ESS should satisfy both the power and energy density requirements as EVs should be able to cover a complicated driving cycle, including starting, acceleration, cruising, and deceleration modes, and meet a long driving mileage per charging.



With the gradual expansion of industrial scale, non-renewable energy sources have been consumed in large quantities, and human society's demand for energy has become more ???



In recent years, many scholars have carried out extensive research on user side energy storage configuration and operation strategy. In [6] and [7], the value of energy storage ???



Electric vehicles (EVs) of the modern era are almost on the verge of tipping scale against internal combustion engines (ICE). ICE vehicles are favorable since petrol has a much ???



The energy system design is very critical to the performance of the electric vehicle. The first step in the energy storage design is the selection of the appropriate energy storage resources. This ???

They may also be useful as secondary energy-storage devices in electric vehicles because they help electrochemical batteries level load power.

**Recycling Batteries.** Electric vehicles are relatively new to the U.S. auto market, so only ???

On-board the vehicle, many methods can be used to manage the energetic flux. over 100 parties who agreed to support an accelerated transition to zero-emission vehicles, ???

The traditional charging pile management system usually only focuses on the basic charging function, which has problems such as single system function, poor user experience, and inconvenient management. In this ???

With the increasing pressure on energy and the environment, vehicle brake energy recovery technology is increasingly focused on reducing energy consumption effectively. Based on the magnetization effect of ???

With the large-scale access of renewable energy, the randomness, fluctuation and intermittency of renewable energy have great influence on the stable operation of a power system. Energy storage is considered to be an ???

# INSTALLATION METHOD OF ENERGY STORAGE DEVICE FOR NEW ENERGY VEHICLES

---



This article's main goal is to enliven: (i) progresses in technology of electric vehicles" powertrains, (ii) energy storage systems (ESSs) for electric mobility, (iii) electrochemical ???