

# INSTALLATION OF PHOTOVOLTAIC PANELS WITH CONCEALED BUCKLE TILES



Can solar panels be installed on a tiled roof? Installing solar panels on roofs is a popular choice for several reasons: low chances of shade from nearby objects, ample space that serves no other purpose, and closeness to your home. How are solar panels fixed to a tiled roof? Solar panels are mounted on a system of rails and roof hooks. The rails float above the roof tiles.



How do I install a roof-integrated solar panel? Roof-integrated solar panel installation is a simple process with Marley SolarTile(R) - just secure the fixings, place the first tile, push-fit additional tiles and then attach final fixings and flashings.



How do I install a solar roof tile? Laying and Blending Roof Tiles for Integrated Solar Roof Tile Installation: Ensure proper laying techniques to maintain the stability of your roof while integrating solar panels seamlessly. Blending techniques can help create an aesthetically pleasing appearance.



Can I install solar panels on a slate roof? Not all roofs, including tiled roofs, are suitable for solar panel installation. To determine if your slate roof is compatible, several factors must be considered. Firstly, assess its structural integrity as solar panels add weight to the roof. If needed, reinforce or repair any weak areas before proceeding with installation.



How do I choose the best solar panel tiles? These considerations will help optimise energy generation. Types of Tiles Suitable for Solar Panel Integration: Choose tiles that are compatible with solar panel installations, such as plain or interlocking tiles that provide a smooth surface for mounting panels without compromising their integrity.

# INSTALLATION OF PHOTOVOLTAIC PANELS WITH CONCEALED BUCKLE TILES



Will a new solar system revert to a tiled roof? As our new setup requires fewer panels to get the same level of performance, we will be able to revert to a tiled finish for more of the roof. More and more UK householders are switching on to the benefits of solar with storage.



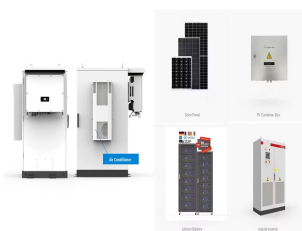
Installation of the SS pedestals and distance between them (A, B i C) must be determined according to the module manufacturer instructions. For Tile roofs, underlayment attached to the roof sheathing must be in accordance with Florida Building Code / Roof tile installation manual. Roof Tile system, must be installed in accordance with RAS-120.



3. Make space for the solar panel accessories (solar inverter, cables and solar batteries, if desired), for instance in a plant room. 4. Plan a day for installation. 5. Erect the scaffolding (this can be done by your supplier or by a company you organise) 6. The solar panel mounts will be installed. 7. The professionals will install the solar

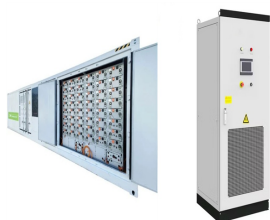


While solar panel installation is the most noticeable part of a solar energy system, it's important to remember that there's more to a solar installation than the panels on the roof. Inverters ??? Solar panels create direct-current electricity (DC), ???



How does the weight of solar panels impact clay tile roofs? Solar panels' weight can be a concern, but they shouldn't be too heavy for your clay tile roof. Proper installation distributes their weight evenly to avoid putting too ???

# INSTALLATION OF PHOTOVOLTAIC PANELS WITH CONCEALED BUCKLE TILES



Buying solar panels from Tesla is fast and simple. We use an online and virtual process to provide you the best value system and fastest time to installation. Learn more about installing solar for your home.



Installing solar panel roof tiles can be more expensive than installing traditional solar panels. However, the cost can be offset by savings on energy bills over time. The installation process for roof replacement with solar tiles can be more complex than traditional solar panels, as they must be integrated directly into the roof structure.



Unlike regular solar panels (also called "on-roof panels"), integrated panels need minimal mounting equipment, and the support that is there is hidden out of sight underneath the panels. In-roof panels are also designed to behave like roof tiles ??? they're weatherproof, waterproof, and can be as strong as normal roof tiles.



Metrotile are revolutionising the solar roof system, with a brand new, fully integrated solar tile entitled the "Metrotile eQube Solar Tile". Metrotile's incredibly secure and lightweight Qube profile, now complimented with sleek, low-weight photovoltaic technology provides a lightweight, easy to install, cost-effective solar option for your home or business.



The primary difference is clay tiles are less brittle and therefore cheaper to install on. Some companies may tell you that you can't go solar or that they won't do the install, but that is not the case. If you have a concrete tile roof, there are two common ways to go about installing solar panels on a concrete tile roof.

# INSTALLATION OF PHOTOVOLTAIC PANELS WITH CONCEALED BUCKLE TILES



Solar Limpets Rosemary Type Tile System. Suitable for side mounted PV rail systems for both portrait or landscape orientation, Solar Limpet's patented adjustable design and installation techniques can save you up to 80% on ???



The objective of this study is to calculate the carbon footprint associated with a residential electricity supply system based on photovoltaic roof tiles, and compare with a photovoltaic panel



Solar panels are mounted on a system of rails and roof hooks. The rails float above the roof tiles. This floating effect is essential, as touching the tiles risks damage from heavy snow or severe wind, which can cause the solar ???

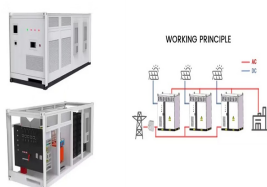


Solar tiles might not be the best or most convenient option for everybody, but they are a fantastic solution for those who have plans to install a new roof, or replace an existing one, and want it to look as normal as possible and to blend in with their community, all while incorporating solar power.



Roof-integrated solar panel installation is a simple process with Marley SolarTile(R) - just secure the fixings, place the first tile, push-fit additional tiles and then attach final fixings and flashings. The entire process can take less than one hour per kilowatt peak, and our integrated solar roof system is provided with all components in colour-coded boxes to make the process even easier.

# INSTALLATION OF PHOTOVOLTAIC PANELS WITH CONCEALED BUCKLE TILES



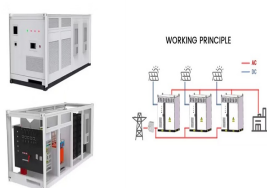
In this guide, we'll explain a typical solar panel installation from start to finish, as well as what all the hardware does, and where on your property you can install the panels. If you're interested in how much you could save with a solar & battery system, click the button below, enter a few details, and we'll generate an estimate.



When reinstalling the tiles after solar panel installation, ensure they are securely placed back into their original positions. Ensuring proper alignment and interlocking between integrated solar roof tiles. Once you have removed and stored the necessary tiles, it's time to install the integrated solar roof tiles while ensuring proper



Here at Deege Solar we offer GSE In-Roof Mounting Systems at ?100 per Solar Panel if the roof is at the felt and batten stage and ?200 Per Solar Panel if the roof is tiled. If you would like to receive a Solar Panel Installation quote ???



Optima (R) and Lyra Concealed panels have a unique concealed edge. These panels offer an upscale, monolithic visual. 1.1 Product Description The Optima and Lyra Concealed products referenced in these instructions are made from fiberglass. They are 100% downward accessible and can be removed without entering the plenum.



Discover our innovative PV Floor solutions, featuring Walkable Solar Modules and Solar Panel Floor Tiles. Our Photovoltaic Floors seamlessly integrate solar energy generation into your space, providing durable, efficient, and aesthetically pleasing energy solutions for both indoor and outdoor applications. Transform your floors into sustainable energy producers today! Walkable ???

# INSTALLATION OF PHOTOVOLTAIC PANELS WITH CONCEALED BUCKLE TILES



Solar PV Mounting Options for a Tile Roof. Photovoltaic contractors typically choose one of three options for mounting solar PV panels on a tile roof. Standoffs with double flashing are the most commonly used method, as this type of PV system mounting allows for the use of different solar racking systems.



How to install solar panels wiring . Solar panel wiring installation is not overly complicated if you understand basic electricity procedures. First, there is a positive wire and a grounding wire. Most solar components have a port for a positive wire and a grounding wire. Next, you would use a ferrule to attach the wires to the components



A preferred technique utilized to install SunPower's highly efficient solar panels on a lightweight tile roof is called an inset solar installation, sometimes referred to as a "comp-out." This process will add additional steps ???

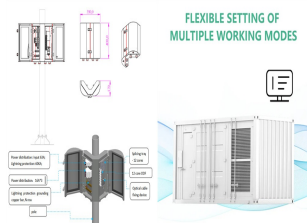


Always begin in-roof Solar installation from the bottom left. Complete the row from left to right before beginning installation of the row above. Prior to install test each panel with a multimeter ???



Types of Tiles Suitable for Solar Panel Integration. Choosing the right type of tiles is crucial. The integration of solar panels requires careful consideration of factors such as weight, durability, ???

# INSTALLATION OF PHOTOVOLTAIC PANELS WITH CONCEALED BUCKLE TILES



Solar Panel Roof Tiles Installation. Installing standard rooftop solar panels usually takes around two days. Replacing roofing tiles with solar tiles should take about a week. Solar panels are mounted on top of roof tiles or slates, bolted on with mounts and clamps. The number of panels varies from house to house.



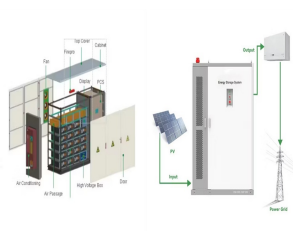
An experienced photovoltaic contractor can install your solar panels with minimal breakage, but expect some tiles to break. Fortunately, the damage can be hidden. Tile adhesive can repair small cracks. In areas with larger breaks, the tiles can ???



Select roof hooks that are made for the exact roof tile shapes that are used. Discover the ideal solar panel sizes for your installation. Learn about common dimensions, types of panels, and space requirements for residential and commercial solar systems. with current solar panel prices in Europe below 6 cents per watt. France plans to



As well as this, the industry leading 5mm panel spacing and hidden fixings give a high-end, sleek aesthetic to your solar roof. Panel performance Marley SolarTile (R) is the only roof-integrated solar system accredited with the highest ???



Apply a waterproof underlayment beneath the solar panel installation area to prevent water infiltration. Proper sealing and waterproofing are essential to protect your roof and interior. Safety is paramount during solar panel installation. Install roof anchors and use harnesses and lifelines to prevent accidents while working on the roof.

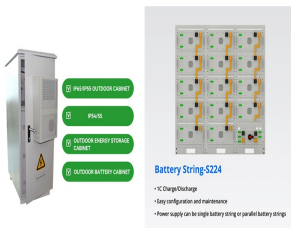
# INSTALLATION OF PHOTOVOLTAIC PANELS WITH CONCEALED BUCKLE TILES



Australia is known for its abundant sunshine, making it an ideal location for harnessing solar energy. With solar power becoming increasingly popular, many homeowners are eager to install solar panels on their roofs. However, solar ???



The installation of solar panels on pitched roof is a quite daunting topic, there are many unknown parameters before we start the procedure. The majority of the roofs will stand easily the extra weight of photovoltaics because ???



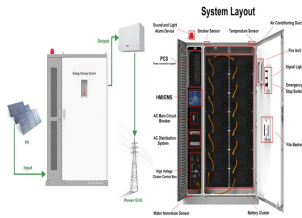
Solar energy has grown significantly in popularity as a renewable energy source, heralded for its potential to reduce greenhouse gas emissions and decrease dependence on fossil fuels. According to the International Energy Agency, solar energy is the fastest-growing renewable energy source, with its capacity projected to reach almost 1,760 GW by 2030.



6 Product and installation standards and test methods for microgeneration systems 28 6.1 PV systems 29 6.2 Solar thermal systems 31 6.3 Microwind turbines 32 Annex Simplified method ???



Laying the roof tiles. SIPCO's installation crew fitted the membrane and vertical counter battens onto the SIPs panels. This membrane is the final line of defence, so if any water does penetrate through the tiles, it will ???



spot ??? credit: TBS Specialist Products