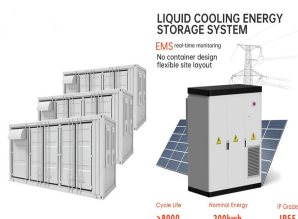
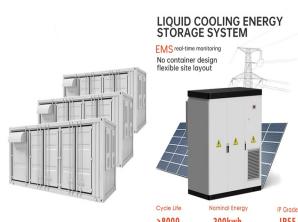


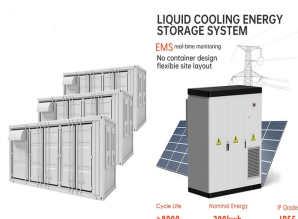
INSTALLATION REQUIREMENTS FOR DOUBLE-ROW PHOTOVOLTAIC PANELS



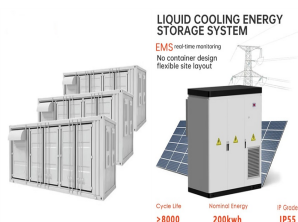
Do solar panels need Building Regulations approval? Building regulations approval is mandatory for solar panel installations in the UK. The approval process ensures compliance with safety, structural, and electrical standards. It verifies that the installation is carried out by competent installers and that all relevant regulations are adhered to.



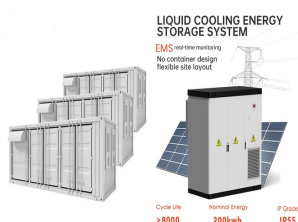
Can I install solar panels if I don't meet building regulations? Your local authority can also apply for a Confiscation Order to take away any money you???ve earned with your system ??? so there???s absolutely no benefit to installing solar panels that don???t meet building regulations. It???s crucial that your solar installation follows all building regulations.



Do you need planning permission to install solar panels on your roof? An increasing number of people are investing in solar energy. More and more homes are having solar panels, or solar tiles, installed on their roofs. Of course, with such installations, the topic of planning permission and building regulations often comes to the surface.



How to choose a solar panel installer? Engaging a Qualified Installer: It is crucial to engage a reputable and qualified installer who is knowledgeable about building regulations and experienced in solar panel installations. They will ensure that the installation meets all the necessary requirements and follows best practices.

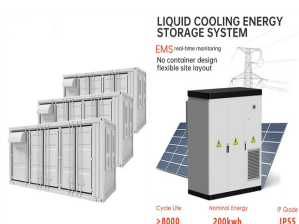


How do I ensure compliance with building regulations for solar panel installations? To ensure compliance with building regulations for solar panel installations, follow these essential steps: Engaging a Qualified Installer: It is crucial to engage a reputable and qualified installer who is knowledgeable about building regulations and experienced in solar panel installations.

INSTALLATION REQUIREMENTS FOR DOUBLE-ROW PHOTOVOLTAIC PANELS



Why do solar panels need building regulations? Compliance with building regulations helps protect the integrity of the building, ensures electrical safety, and minimizes the risk of accidents or damage caused by improper installation. In the UK, the installation of solar panels is subject to both planning permission and building regulations approval.



Your installer must gain building regulations approval from your local authority for their solar panel system plan before they can proceed. They will have to prove your roof can comfortably support the weight of your chosen ???



installed at the back of the solar PV modules. Module The Solar PV panel including all solar PV cells, frame, and electrical connections Module Array A collection of multiple solar PV modules, making up part of the overall PV system. Mounting Bracket The bracket for fixing the solar PV system to the roof structure.

APPLICATION SCENARIOS



This Code of Practice sets out the requirements for the design, specification, installation, commissioning, operation, and maintenance of grid-connected solar photovoltaic (PV) systems. Key safety considerations in the protection and ???

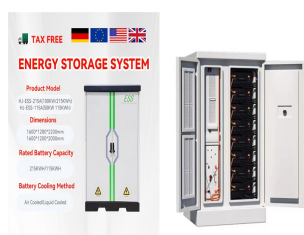


Equipment and Installation Requirements All materials and equipment of the PV system shall be products of manufacturers solar certified under ISO 9001 quality assurance standard. The solar PV system shall be of proprietary product and have test certificates to prove the performance claimed. The PV panels and

INSTALLATION REQUIREMENTS FOR DOUBLE-ROW PHOTOVOLTAIC PANELS



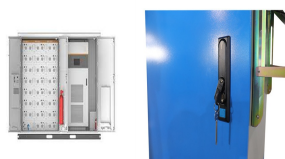
See also: How Long Does it Take to Install Solar Panels? A Complete Guide. Step 6: Ground the System, including the Panels and the Mounting System. See also: DIY Solar Panel Installation: A Comprehensive Step-by-Step Guide. Do I need to ground my solar panels? Yes. You must ground the solar array and each of the solar components.



(1) For access to PV installations on the roof (excluding non-PV areas), at least one exit staircase shall be provided. Where the area is large and one-way travel distance to the exit cannot be met, an additional cat ladder or ship ladder adequately separated from the exit staircase, in accordance with Cl.2.2.11 and leading to the circulation area of the floor below ???



The installation selection of photovoltaic ground brackets is mainly based on factors such as the fixing method of the bracket, terrain requirements, material selection, and the weather resistance, strength, and stiffness of the bracket. First, there are many fixing methods, such as pile foundation method (direct burial method), concrete block weight method, pre-embedded method, ground ???



The number of solar panels you need depends on the following factors:.. Your solar panel needs; Your usable roof area; Solar panel dimensions; Photovoltaic cell efficiency. So, for example, if you have a small roof, it might be a good idea ???

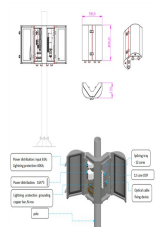


With a 2m exclusion zone the area for panels on each half of the roof would be only 1.27m by 11m, which isn't much and is less than 18% of the total roof area. That might have been fine back in the days when the typical ???

INSTALLATION REQUIREMENTS FOR DOUBLE-ROW PHOTOVOLTAIC PANELS



Clearline fusion is the only roof-integrated solar system with independent, third-party accreditation that it meets new NHBC Technical Requirements for durability, issued in 2024. Its British Board of Agreement certificate applies to the entire ???



Solar Stack systems have been evaluated for module-to-system bonding and mechanical load to the requirements of UL/ANSI 2703. This racking system may be used to ground and/or mount a PV module complying with UL 1703 only when the specific module has been evaluated for grounding and/or mounting in compliance with the included instructions.



(Note: 1/4 ? One end of the single row needs to be extended. Horizontal Installation: Standard Cable Length Vertical Installation: Standard Cable Length (Note: One end of the single row needs to be extended.)

Horizontal Installation? 1/4 ? 60 type PV module cable length ??? 1.2m, 72 type PV module cable length ??? 1.4m



Read this article to discover everything you need to know about installing a photovoltaic system in Cyprus. +357 26 941 555 info@greenair-cy Mon - Fri: 08:00 - 18:00 HOME; ABOUT; SERVICES. Air Conditioning; they can guide you through the decision-making process and ensure that you choose the best panel for your specific requirements.



Be sure that the PV panel system is properly grounded. When the first row of PV modules has been installed on the anchoring system, check the installation to verify that it was completed to a high standard of quality. Section R324 in IRC 2015, 2018, and 2021 addresses solar energy system requirements. For 2018, there are several

INSTALLATION REQUIREMENTS FOR DOUBLE-ROW PHOTOVOLTAIC PANELS



All decisions regarding the engineering of a large solar PV power system must be carefully considered so that initial decisions made with cost savings in mind do not result in more maintenance costs and decreased performance later in the system's lifespan. In general, the decisions regarding layout and shading potential, panel tilt angle and orientation, and PV ???



Looking to install a photovoltaic (PV) system? Our detailed guide provides step-by-step instructions for pitched, in-roof, and flat roof mounting. Avoid common mistakes and ensure a seamless installation process for maximum efficiency ???



7 6. Solar Panel Layout & Hydraulics. 12 7. Connecting the Solar Panels Together. 14 8. Mounting the Solar Panels Using Gator Clamps. 17 9. Mounting the Solar Panels On A Flat Roof. 18 10. Assembly of Row Spacer Kits. 19 11. Connecting the Solar Panels to the Feed & Return Lines. 20 12. Running the Feed & Return Lines from Roof to Ground Level



PV Solar panels and can accommodate a double row configured with up to 80 panels per table. Two rows in a portrait orientation with up to 80 panels in a table with tilt angles from 10 to 30 o with a 5 increase. This allows for the installation to be set at a perfect angle to optimise energy production for different regions and countries.



To ensure a successful solar panel installation, engage a qualified installer, seek planning permission if required, and obtain building regulations approval. By following these steps, you can harness the power of ???

INSTALLATION REQUIREMENTS FOR DOUBLE-ROW PHOTOVOLTAIC PANELS



Installation: The physical installation of your solar panel system can vary in complexity, but it generally involves mounting the panels on your roof, installing an inverter, and setting up the connection to your home's electrical ???



There are a large number of formally approved solar panel installations in conservation areas, including on roofs that face the road. This is the case if your solar panels: Do not meet the PD requirements set out in the above section; Your solar panel system must comply with building regulations in terms of structural integrity



The tilt Angle of PV Modules refers to the Angle between the Modules" surface and the ground plane. The Modules get maximum output power when facing directly into the sun. For details ???



The ideal pitch for a Solar Panel is around 30 degrees off the horizontal. Simply because this allows the panels to gain more exposure from the sun throughout the entire day. When installing Solar panels on a flat roof, this is easily achieved. As the Solar Panels are installed onto a bracket which tilts the panel to around 30 degrees.



Many installers will use a torque wrench to apply the correct torque initially and then go back and double-check before proceeding with the installation of the next row of PV panels. Some roof panel designs and materials experience a slight amount of seam compression initially, resulting in a final torque value a little lower than first applied and would require re ???

INSTALLATION REQUIREMENTS FOR DOUBLE-ROW PHOTOVOLTAIC PANELS



Make sure to thoroughly review the guidelines provided by your local building authority before proceeding with any solar panel installation on your site. Assessment of Roof Suitability for Solar Panel Installation. Not all roofs, ???



Bifacial solar panels represent a significant advancement in photovoltaic technology, offering the potential to capture sunlight from both their front and rear surfaces. This innovative design can increase energy yield by 5 ???



structure as well as operation and maintenance into account. The roofing PV system shall be installed after being evaluated by construction experts or engineers and with official analysis results for the entire structure. It shall be proved capable of supporting extra system bracket pressure, including PV module weight.



Posts per row: Dependent on soil conditions, type of posts and row length ??? average is 11 to 13 per row. Row lengths: While 96 modules per row is most common, OMCO Solar can customize to accommodate up to 112. ???