

# INSTALLING PHOTOVOLTAIC PANELS ON THE SLOPING ROOF



How do you install solar panels on a sloping roof? The most common solar installations are on sloping tiled roofs. There are three ways of doing this: attaching the panels on brackets above the tiles, removing a section of tiles to install panels *???*in roof*???*, or roofing directly with solar tiles.



Can you install solar panels on a flat roof? You can install solar panels on a flat roof, but it's much easier on the flat roofs of large, commercial buildings, which are typically very strong. The vast majority of residential flat roofs in the UK are not suitable for solar panels, due to a variety of reasons.



Where should solar panels be installed on a roof? The best place to install solar panels on a roof (flat or sloped) is on a south-facing section, as it will receive the most daylight throughout the day, optimising electricity production.



How much does a solar panel weigh on a flat roof? As mentioned earlier, solar panels on a flat roof need a heavy ballasted mounting system to stay secure in high winds. And that ballast can make a solar panel up to five times heavier than a typical non-ballasted panel. A ballasted solar panel can weigh around 100kg, whereas a non-ballasted solar panel is only about 20kg.



How far apart should solar panels be on a flat roof? However, as a general rule of thumb, you need about one metre between each row of solar panels on a flat roof. Building and safety regulations also require a minimum distance of 0.5-1m between the solar panels and the edge of the roof. Where is the best place to put solar panels on a roof?

# INSTALLING PHOTOVOLTAIC PANELS ON THE SLOPING ROOF



Can a solar PV system be installed on a roof? In general, there should be no need to fret, as solar PV can be installed on almost any roof type. Most roof materials are suitable for a solar PV system. However, three types of roofing are excluded for the placement of a solar PV system: Thatch roofs: As this increases fire risk.



Flat roofs are more accessible than sloping roofs, so installation and maintenance are smooth and straightforward. Installers don't have to worry about angled surfaces, making placing and maintaining panel systems more effortless and cheaper. Flat roofs allow maximum space utilization, and you can install a more extensive solar panel



If you're planning to install a solar panel system in your home, you must register it with your Distribution Network Operator (DNO). The DNO is the company responsible for bringing electricity to your home. The ideal place to install solar panels is on a sloping roof, as the panels work best when angled towards the sun. But if you can't

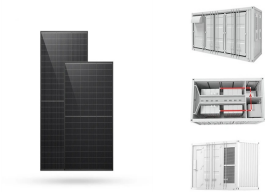


The solar panel system would protrude more than 20 cm from the external surface of the wall or roof slope; If your roof isn't suitable for solar panel installation, you can mount them on an external wall. Although they can be trickier to install, you'll find they're much easier to maintain and clean than roof panels.



When compared with pitched roofs, the installation of solar panels on flat roofs is usually easier, safer and quicker by not having steeply sloping roofs to work on. Existing roof finishes also don't need to be disturbed, ???

# INSTALLING PHOTOVOLTAIC PANELS ON THE SLOPING ROOF



Flat roof solar panel installations come with a set of unique challenges, which can lead to significant issues like leaks, damaged roofs, and unexpected extra costs. the roof slope, and the installation location's latitude. However, as a general rule of thumb, you need about one metre between each row of solar panels on a flat roof.



Sloping roofs (concrete/rosemary/slate tiles) The most common solar installations are on sloping tiled roofs. There are three ways of doing this: attaching the panels on brackets above the tiles, removing a section of tiles to ???



Greentech Renewables has organized crucial insights to help solar installers understand the most cost-effective and safest options when working on metal roof solar installations. The following article covers various metal roof types and their associated racking methods, reviews industry-leading metal roof racking equipment, and offers best practices in installing PV systems on ???



By utilizing the open space on your roof, you can take advantage of the sun's energy and convert it into usable electricity. In this section, we will explore the introduction to solar panel roof mounts, highlight the ???



The best place to install solar panels on a roof (flat or sloped) is on a south-facing section, as it will receive the most daylight throughout the day, optimising electricity production. East- or west-facing roofs can also be ???

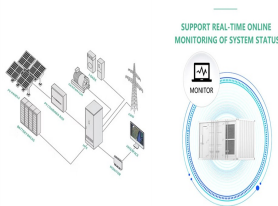
# INSTALLING PHOTOVOLTAIC PANELS ON THE SLOPING ROOF



Metal tile roofs: Quick Mount PV also manufactures a Tile Replacement Mount to make installing solar on tile roofs easier, including metal tile roofs. Tile Replacement Mount products are shaped like roof tiles and can be swapped with existing tiles on your roof. In addition to making the installation process easier, they have the bonus of ensuring that your solar ???



An in-roof solar panel system sits on top of the roofs battens and is then tiled or slated around. Installing solar panels on flat roofs is fairly simple to do. Generally, there are two most common ways of installing solar panels a flat ???



Solar engineers need to consider the angle of the roof and its orientation when installing solar panels on sloping roofs. In addition, PV panels will produce much less than the desired output if the roof faces east, north, or west. However, on flat rooftops, you have the freedom to adjust the angle of your solar panel system, so it faces



PV panel anchors are installed and flashed before installing racks and panels. (Source: IBACOS.) Figure 6. Lag-Bolted L Brackets for Mounting PV Panels to Roof Decking. (Source: Solar Rating and Certification Corporation 2020.) ???



Most people are installing systems to their existing house ("retrofit") and choose to attach panels onto the roof using mounting brackets. For new build or re-roof situations, or where there may be an issue with planning (e.g. a conservation area), an in-roof mounting system or solar roof tiles may be the solution of choice. On roof

# INSTALLING PHOTOVOLTAIC PANELS ON THE SLOPING ROOF



sloping roofs are subjected to gravity loads and wind loads, while flat roofs must bear additional live loads, such as HVAC equipment or people. The design load for a particular roof can be determined by consulting with a structural engineer. The load of a solar panel can vary depending on several factors, such as its size, type, and brand.



When installing a photovoltaic (PV) system on a sloped roof, safety measures are crucial. Additionally, it is crucial to confirm that the weather is dry before moving on. Discover the ideal solar panel sizes for your installation. Learn about common dimensions, types of panels, and space requirements for residential and commercial solar



Technical drawings showing installation of integrated solar PV and solar thermal panels in slate and tile roofs and solar thermal plumbing systems. Toggle navigation. Installation Instructions and Videos; Technical Briefings and ???



However, most flat roofs can't hold a solar panel system. A good installer will avoid drilling into a flat roof for fear of causing leaks, and will instead use ballasts ??? each of which weighs 80kg per panel. However, you can still achieve a decent level of output with other angles. For instance, it's possible to install solar panels at



Home renovations don't have to be stressful or excessive, and solar panel installation is neither. Solar Panels Are Low Maintenance. Not only are solar panels easy to install, but they also require next to no maintenance. Once the panels are set up on your roof, you can essentially just forget about them.

# INSTALLING PHOTOVOLTAIC PANELS ON THE SLOPING ROOF



South-facing panels give you the most bang for your buck because the sun crosses the sky in the south, giving the panels more sunlight. "We tell people that a solar panel costs the same amount regardless of what orientation it gets installed in," says Aaron Nitzkin, executive vice president of solar at Citadel Roofing and Solar in California (another ???



You don't need a special type of solar panel for a flat roof installation. Standard solar PV panels that you would install on a sloped roof can also be installed on flat roofs. The only difference is the way they are fitted. On ???



Regular Maintenance: Consistent maintenance is key to ensuring the long-term stability and efficiency of your solar panel system on a flat roof. The Benefits of Installing Solar PV Panels on Sloped Roofs Residential Appeal. Sloped roofs ???



Assessment of Roof Suitability for Solar Panel Installation. Not all roofs, including tiled roofs, are suitable for solar panel installation. To determine if your slate roof is compatible, several factors must be considered. Firstly, assess its structural ???



We offer solar panel kits from 1 panel to fix onto any roof structure up to 50 or more PV panels. Below you will find the K2 instruction video. This provides an example of how easy the system is to assemble solar panel kits. Click on this link to view ???

# INSTALLING PHOTOVOLTAIC PANELS ON THE SLOPING ROOF



The extra cleaning maintenance can be a frustration for many flat-roof owners; when compared to panels installed on a sloping roof, that generally maintain themselves. Installing your solar panels using the correct ???



A great feature of solar panels, is the ability of installing them in different ways and in different places. We can install them on the ground, or on the roof, and even the roof is flat or pitched, we can install them on it, without ???



Flat roofs offer more flexibility in terms of your solar panel system design. You can orient them to face south and mount them at the optimal angle to maximize your solar energy generation. Solar panel systems on flat roofs often perform better than those on sloped roofs, resulting in better long-term savings.



East and west-facing rooftops are also acceptable for solar panel installation and will still generate a significant amount of electricity throughout the day. With a sloping roof, the slope may even reach up to 60 ° and still be effective. As well ???



How to Install Solar Panels on a Sloping Roof? Thursday, July 7, 2022  
when installing solar panels on flat roof, we are free to face the solar panel to the best sunlight direction, with the best inclination angle. The fact is the flat roof is the excellent place to install solar panels, while the pitched roof in the more common, so in both



# INSTALLING PHOTOVOLTAIC PANELS ON THE SLOPING ROOF



What should be the solar panel location on a building? The roof space will determine the available surface in which the property defines to locate the PV panels. It will be necessary to ensure that this ???



Installing solar panels on a flat roof is pretty similar to the installation process for a sloped roof, although there are some nuances concerning the mounting equipment. We'll include a brief description of each ???



In the past I've written about solar panel clamping zones which determine where, on a solar panel's edge, you can place the clamps that attach the modules to their mounting rails. What I didn't do was go into just where on a roof solar panels can and can't be installed. Depending on the roof mounting system used to attach the panels, there may be "exclusion ???



Exploring solar panel installation on flat roofs and the benefits and challenges to expect can ensure you make an informed decision. Quick Takeaways: Unlike sloped roofs that direct water to gutters and eaves, flat roofs tend to collect water in certain areas. Water can quickly accumulate on a flat roof, increasing the risk of leakage and



Deciding to install a solar system is only the first step. Solar panel installation constitutes a substantial project with significant financial implications, entailing numerous subsequent decisions.. This article explores the solar panel mounting brackets for solar installation and the key factors to consider. Amidst the vast options, understanding the ???



# INSTALLING PHOTOVOLTAIC PANELS ON THE SLOPING ROOF

---



This reduction in material needs can lower the overall cost of the solar panel system. Mounting solar panels on sloped roofs typically involves standard penetrating mounts, which are less expensive than the non-penetrating racking systems used for flat roofs. The installation process is less complex, leading to lower labor and installation costs.