

INTRODUCTION TO THE ENERGY STORAGE POWER STATION



What is a battery storage power plant? Battery storage power plants and uninterruptible power supplies (UPS) are comparable in technology and function. However, battery storage power plants are larger. For safety and security, the actual batteries are housed in their own structures, like warehouses or containers.



What are the current storage strategies based on the gravitational potential energy principle? Botha and Kamper reviewed current storage strategies based on the gravitational potential energy principle. Botha et al. investigated a novel GES system which utilises the inherent ropeless operation of linear electric machines to vertically move multiple solid masses to store and discharge energy.



How does a gravity power module store energy? It stores energy by using water to lift a piston or any other object with the requisite mass, and then dropping the piston to push the water back through hydroelectric generators when the power is required. This storage concept, i.e., the gravity power module, was proposed by Gravity Power, LLC.



When did energy storage systems start? It should be mentioned that the deployment of ESSs began nearly in the 19th century and they have come a long way since then to reach the point they are at now. ESSs can be classified according to the form of energy stored, their uses, storage duration, storage efficiency, and so on.



Are battery storage units a viable source of energy storage? source of energy storage. Battery storage units can be one viable option involved, which the energy while providing reliable services has motivated historical development of energy storage units in terms of voltage, frequency regulations. This will then translate to the requirements for an energy storage unit and its response time when

INTRODUCTION TO THE ENERGY STORAGE POWER STATION



What is a thermochemical energy storage system? Promising materials for thermochemical energy storage system . TCES systems have two main types: open and closed systems (Fig. 18). In an open system, the working fluid, which is primarily gaseous, is directly released into the environment, thereby releasing entropy. In contrast, the working fluid is not released directly in a closed system.



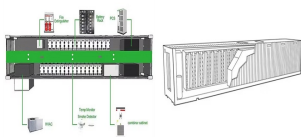
Storage capacity is the amount of energy extracted from an energy storage device or system; usually measured in joules or kilowatt-hours and their multiples, it may be given in number of hours of electricity production at power plant nameplate capacity; when storage is of primary type (i.e., thermal or pumped-water), output is sourced only with



is the amount of time storage can discharge at its power capacity before depleting its energy capacity. For example, a battery with 1 MW of power capacity and 4 MWh of usable energy capacity will have a storage duration of four hours. ??? Cycle life/lifetime. is the amount of time or cycles a battery storage



Power plant retirements; Transmission congestion and prices;
Competitive and declining costs of wind, solar, and energy storage; Lower environmental and climate impacts (social costs) than fossil fuels;
Expansion of competitive wholesale electricity markets; Introduction to ???



Materials for Electrochemical Energy Storage: Introduction Phuong Nguyen Xuan Vo, Rudolf Kiefer, Natalia E. Kazantseva, Petr Saha, and Quoc Bao Le (LiB) power plant. It was installed to be paired with the Hornsdale wind farm, and recently it has been expanded by 50% to 150 MW to increase its capacity for smoothing out temporary spikes in

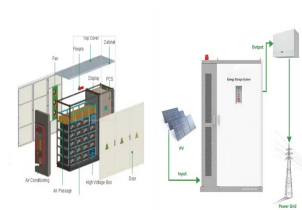
INTRODUCTION TO THE ENERGY STORAGE POWER STATION



Hydro Power Plant Definition: Hydro Power Plant is an electricity-producing plant in which the water is an essential fuel, the potential energy is being converted into kinetic energy and kinetic energy is further converted into mechanical and into electrical energy with the help of a turbine and motor. We will understand how it works in very



Energy storage devices (ESD) are emerging systems that could harness a high share of intermittent renewable energy resources, owing to their flexible solutions for versatile applications from mobile electronic devices, transportation, and load-leveling stations to extensive power conditioning.



22 categories based on the types of energy stored. Other energy storage technologies such as 23 compressed air, fly wheel, and pump storage do exist, but this white paper focuses on battery 24 energy storage systems (BESS) and its related applications. There is a body of 25 work being created by many organizations, especially within IEEE, but it is



The pumped storage power station (PSPS) is a special power source that has flexible operation modes and multiple functions. As a result, the PSPS is currently the most mature and practical way for large-scale energy storage in the power system. (4) Pumped storage systems introduction in isolated power production systems. Renew Energy



Introduction. Pumped storage power plants are a type of hydroelectric power plant; they are classified as a form of renewable (green) power generation.. Pumped storage plants convert potential energy to electrical energy, or, electrical energy to potential energy.They achieve this by allowing water to flow from a high elevation to a lower elevation, or, by pumping water from a ???

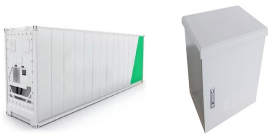
INTRODUCTION TO THE ENERGY STORAGE POWER STATION



Grid-connected energy storage provides indirect benefits through regional load shaping, thereby improving wholesale power pricing, increasing fossil thermal generation and utilization, reducing cycling, and improving plant efficiency. Co-located energy storage has the potential to provide direct benefits arising



1. Steam power plant 2. Diesel power plant 3. Gas turbine power plant 4. Nuclear power plant 5. Hydro electric power plant The Steam Power Plant, Diesel Power Plant, Gas Turbine Power Plant and Nuclear Power Plants are called THERMAL POWER PLANT, because these convert heat into electric energy. Power Plant Non-conventional Conventional



1.1 Introduction Energy Storage Systems ("ESS") is a group of systems put together that can store and release energy as and when required. It is essential in enabling the energy transition to a more sustainable energy Power Plant Solar Panels Substation ESS Office Buildings Hospital Housing Estates ??? Energy Arbitrage ntern gl tiga

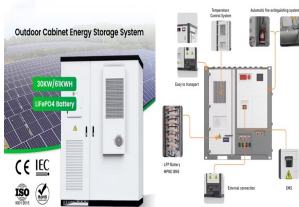


OverviewHistoryMethodsApplicationsUse casesCapacityEconomicsResearch



The pumped storage power station (PSPS) is a special power source that has flexible operation modes and multiple functions. With the rapid economic development in China, the energy demand and the peak-valley load difference of ???

INTRODUCTION TO THE ENERGY STORAGE POWER STATION



Firstly, based on a brief introduction of the Jiangsu Zhenjiang energy storage power station project, a relatively complete evaluation indicator system has been established, including three aspects: charging and discharging effect, energy efficiency, and reliability; secondly, the subjective and objective weights of the indicators were



Hydroelectric power is a form of renewable energy in which electricity is produced from generators driven by turbines that convert the potential energy of moving water into mechanical energy. Hydroelectric power plants usually are located in dams that impound rivers, though tidal action is used in some coastal areas.



Introduction . Conventional With the establishment of a large number of clean energy power stations nationwide, there is an urgent need to establish long-duration energy storage stations to



A compressed air energy storage power plant functions in a way similar to a hydropower plant, yet the storage medium is changed from water to compressed air. Introduction to thermal energy storage (TES) systems. In L. F. Cabeza (Ed.), Advances in thermal energy storage systems (pp. 1???28). Woodhead Publishing. Google Scholar Kolpak, A. M



The actual voltage generated depends on the plant and is optimized for things like the type of power plant and their generation patterns. 2) The voltage produced at the power plant is transmitted to a step-up transmission substation that uses transformers to convert the voltage from the power plant to a really high voltage. This is usually a

INTRODUCTION TO THE ENERGY STORAGE POWER STATION



The potential for solar energy to be harnessed as solar power is enormous, since about 200,000 times the world's total daily electric-generating capacity is received by Earth every day in the form of solar energy. Unfortunately, though solar energy itself is free, the high cost of its collection, conversion, and storage still limits its exploitation in many places.



The energy industry is a key industry in China. The development of clean energy technologies, which prioritize the transformation of traditional power into clean power, is crucial to minimize peak carbon emissions and achieve carbon neutralization (Zhou et al., 2018, Bie et al., 2020) recent years, the installed capacity of renewable energy resources has been steadily ???



1 INTRODUCTION. Large-scale construction of wind and PV power has become a key strategy for dealing with the energy crisis. However, the variability and uncertainty of large-scale renewable energy power stations pose a series of severe challenges to the power system, such as insufficient peak-shaving capacity and high curtailment rates



Pumped storage hydropower (PSH) is a type of hydroelectric energy storage. It is a configuration of two water reservoirs at different elevations that can generate power as water moves down from one to the other (discharge), passing through a turbine. Charles Scaife, a technology manager and scientist at the U.S. Department of Energy's



At Castaic Lake, in Los Angeles County, 30-foot-diameter pipes (mostly buried) carry water 7.2 miles uphill to a pumped storage reservoir. The 1.5-gigawatt plant generates enough electricity to power 83,000 homes during peak-demand hours. (Photo credit: Philip Warburg) Far less commonly used are utility-scale flywheel systems, only three of which now ???

INTRODUCTION TO THE ENERGY STORAGE POWER STATION



The installed power capacity of China arrived 2735 GW (GW) by the end of June in 2023 (Fig. 1 (a)), which relied upon the rapid development of renewable energy resources and the extensive construction of power grid systems during the past decade [1]. The primary power sources in China consist of thermal power (50 %), hydropower (15 %), wind power (14 %), and ???



The participation strategy of the energy storage power plant in the energy arbitrage and frequency regulation service market is depicted in Fig. 15, while the SOC curve of the energy storage power plant is presented in Fig. 16. Upon analyzing the aforementioned scenarios, it is evident that the BESS can generate revenue in both markets.



3.7se of Energy Storage Systems for Peak Shaving U 32 3.8se of Energy Storage Systems for Load Leveling U 33 3.9ogrid on Jeju Island, Republic of Korea Micr 34 4.1rice Outlook for Various Energy Storage Systems and Technologies P 35 4.2 Magnified Photos of Fires in Cells, Cell Strings, Modules, and Energy Storage Systems 40



Thermal energy storage (TES) systems can store heat or cold to be used later, at different conditions such as temperature, place, or power. TES systems are divided in three types: sensible heat, latent heat, and sorption and chemical energy storage (also known as thermochemical). Although each application requires a specific study for selecting the best ???



With the increasing global demand for sustainable energy sources and the intermittent nature of renewable energy generation, effective energy storage systems have become essential for grid stability and reliability. This paper presents a comprehensive review of pumped hydro storage (PHS) systems, a proven and mature technology that has garnered significant interest in ???