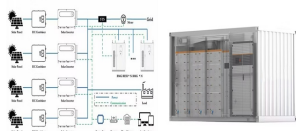


IS SUPERCONDUCTING ENERGY STORAGE DANGEROUS



The substation, which integrates a superconducting magnetic energy storage device, a superconducting fault current limiter, a superconducting transformer and an AC superconducting transmission



Superconducting Magnetic Energy Storage (SMES) is a promising high power storage technology, especially in the context of recent advancements in superconductor manufacturing [1]. With an efficiency of up to 95%, long cycle life (exceeding 100,000 cycles), high specific power (exceeding 2000 W/kg for the superconducting magnet) and fast response time a?)



Superconducting magnetic energy storage (SMES) plants have previously been proposed in both solenoidal and toroidal geometries. The former is efficient in terms of the quantity of superconductor



The use of superconducting magnetic energy storage (SMES) is becoming more and more significant in EPS, including power plants, T & D grids, This work goes on to further outline the main issues and their repercussions. The most dangerous issues on the EPS side are identified to be voltage sag, voltage swell, and harmonics. In addition, the



Superconducting magnetic energy storage (SMES) is the only energy storage technology that stores electric current. This flowing current generates a magnetic field, which is the means of energy storage. The current continues to loop continuously until it is needed and discharged.

IS SUPERCONDUCTING ENERGY STORAGE DANGEROUS



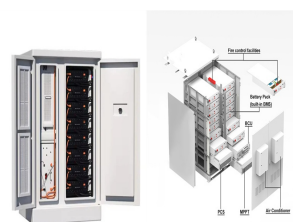
Another popular technique, compressed air energy storage, is cheaper than lithium-ion batteries but has very low energy efficiency about 50%. Here is where Jawdat sees a market opportunity.



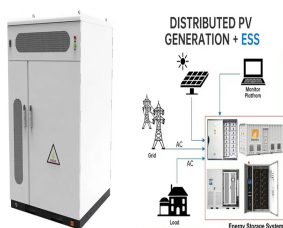
Superconducting magnetic energy storage (SMES) systems use superconducting coils to efficiently store energy in a magnetic field generated by a DC current traveling through the coils. Due to the electrical resistance of a typical cable, heat energy is lost when electric current is transmitted, but this problem does not exist in an SMES system.



A Superconducting Magnetic Energy Storage (SMES) device is a dc current device that stores energy in the magnetic field. The dc current flowing through a superconducting wire in a large magnet



This CTW description focuses on Superconducting Magnetic Energy Storage (SMES). This technology is based on three concepts that do not apply to other energy storage technologies (EPRI, 2002). First, some materials carry current with no resistive losses. Second, electric currents produce magnetic fields.



Superconductors can be used to build energy storage systems called Superconducting Magnetic Energy Storage (SMES), which are promising as inductive pulse power source and suitable for powering electromagnetic launchers. Preferentially, the temperature is kept under 100 K to avoid localized thermal dilatation and thus dangerous mechanical

IS SUPERCONDUCTING ENERGY STORAGE DANGEROUS



2MW / 5MWh
Customizable

Energy storage is constantly a substantial issue in various sectors involving resources, technology, and environmental conservation. This book chapter comprises a thorough coverage of properties, synthetic protocols, and energy storage applications of superconducting materials. Further discussion has been made on structural aspects along with



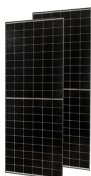
This book explores the potential of magnetic superconductors in storage systems, specifically focusing on superconducting magnetic energy storage (SMES) systems and using the Spanish electricity system, controlled by Red Electrica de Espana (REE), as an example.



Abstract a?? The SMES (Superconducting Magnetic Energy Storage) is one of the very few direct electric energy storage systems. Its energy density is limited by mechanical considerations to a?|



The superconducting magnet energy storage (SMES) has become an increasingly popular device with the development of renewable energy sources. The power fluctuations they produce in energy systems must be compensated with the help of storage devices. A toroidal SMES magnet with large capacity is a tendency for storage energy because it has great



Superconducting magnetic energy storage (SMES) is a device that utilizes magnets made of superconducting materials. Outstanding power efficiency made this technology attractive in society. This study evaluates the SMES from multiple aspects according to published articles and data. The article introduces the benefits of this technology

IS SUPERCONDUCTING ENERGY STORAGE DANGEROUS



2.1 General Description. SMES systems store electrical energy directly within a magnetic field without the need to mechanical or chemical conversion [1] such device, a flow of direct DC is produced in superconducting coils, that show no resistance to the flow of current [2] and will create a magnetic field where electrical energy will be stored.. Therefore, the core of a?



Energy storage with large superconducting magnets is one of the possible new components in a power system. Serious feasibility studies are under way in the United States at the University of Wisconsin and at the Los Alamos Scientific Laboratory. The preliminary



With high penetration of renewable energy sources (RESs) in modern power systems, system frequency becomes more prone to fluctuation as RESs do not naturally have inertial properties. A conventional energy storage system (ESS) based on a battery has been used to tackle the shortage in system inertia but has low and short-term power support during a?



Superconducting magnetic energy storage (SMES) systems offering flexible, reliable, and fast acting power compensation are applicable to power systems to improve power system stabilities and to advance power qualities. The authors have summarized researches on SMES applications to power systems. Furthermore, various SMES applications to power



Superconducting magnetic energy storage (SMES) systems are based on the concept of the superconductivity of some materials, which is a phenomenon (discovered in 1911 by the Dutch scientist Heike

IS SUPERCONDUCTING ENERGY STORAGE DANGEROUS



A Superconducting Magnetic Energy Storage (SMES) system stores energy in a superconducting coil in the form of a magnetic field. The magnetic field is created with the flow of a direct current (DC) through the coil. To maintain the system charged, the coil must be cooled adequately (to a "cryogenic" temperature) so as to manifest its superconducting properties a?? a?|



The Distributed Static Compensator (DSTATCOM) is being recognized as a shunt compensator in the power distribution networks (PDN). In this research study, the superconducting magnetic energy storage (SMES) is deployed with DSTATCOM to augment the assortment compensation capability with reduced DC link voltage. The proposed SMES is a?|



Superconducting magnetic energy storage (SMES) devices integrated with resistive type superconducting fault current limiter (SFCL) for fast recovery time capacities of the breakers. In the power system elements, the generator, transformer, cables, etc., are exposed to the dangerous a?| Expand. PDF. 1 Excerpt; Save.



The review of superconducting magnetic energy storage system for renewable energy applications has been carried out in this work. SMES system components are identified and discussed together with control strategies and power electronic interfaces for SMES systems for renewable energy system applications. In addition, this paper has presented a



Superconducting energy storage systems utilize superconducting magnets to convert electrical energy into electromagnetic energy for storage once charged via the converter from the grid, magnetic fields form within each coil that is then utilized by superconductors as magnets and returned through power converters for use elsewhere when required

IS SUPERCONDUCTING ENERGY STORAGE DANGEROUS



Another emerging technology, Superconducting Magnetic Energy Storage (SMES), shows promise in advancing energy storage. SMES could revolutionize how we transfer and store electrical energy. This article explores SMES technology to identify what it is, how it works, how it can be used, and how it compares to other energy storage technologies.