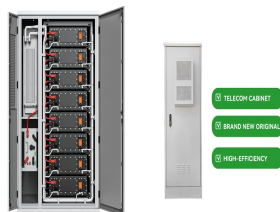


# IS THE ROOF OF A VILLA SUITABLE FOR INSTALLING PHOTOVOLTAIC PANELS



Can a solar PV system be installed on a roof? In general, there should be no need to fret, as solar PV can be installed on almost any roof type. Most roof materials are suitable for a solar PV system. However, three types of roofing are excluded for the placement of a solar PV system: Thatch roofs: As this increases fire risk.



Can a roof be suitable for solar panels? Even a roof that doesn't match the ideal requirements can still be suitable for solar panels. Part of the personal recommendation provided by Solar Together will be a breakdown of any additional costs needed to cover a variety of roofs. Often, roof characteristics will instead affect the output which solar panels generate.



Can I install solar panels on a flat roof? It doesn't matter whether you live in a house, bungalow, farm, or villa—both sloping and flat roofs are viable options for solar panel installation, and you will be offered multiple roof pitch options during the registration phase for Solar Together.



Where should a photovoltaic system be installed? The ideal place to put a photovoltaic system is on the rooftop, as it's generally the spot most exposed to the sun and would otherwise be unused space. But which types of roof are suitable for solar panels? The first step is to make sure you own your roof.



How many solar panels can be installed on a roof? Your roof will need to be large enough to fit a suitable number of solar panels, as there's rarely much point putting just two or three panels up there. The average solar panel takes up 2m<sup>2</sup>, and your installer should leave around 40cm on each side of the array, as well as 3cm between every panel.

# IS THE ROOF OF A VILLA SUITABLE FOR INSTALLING PHOTOVOLTAIC PANELS



Can a UK roof support solar panels? As long as your roof is pitched, has enough unshaded space, and doesn't contain spray foam insulation underneath, it should be suitable for solar panels. The large majority of UK roofs are more than capable of supporting solar panels for as long as you need them to.



As long as your roof is pitched, has enough unshaded space, and doesn't contain spray foam insulation underneath, it should be suitable for solar panels. The large majority of UK roofs are more than capable of ???



Determining if your roof is suitable for solar panel installation involves assessing sunlight exposure, roof type, size, condition, orientation, pitch, and shading. While it may seem complex, the benefits of solar energy make it worthwhile. Don't ???



The diagram above indicates how different roof orientations can impact how suitable your roof is for solar panels. The best type of roof for solar panels is a south-facing roof as they tend to generate the most electricity from solar panels, as they are exposed to the sun's energy when it's most intense (midday) and for the longest period.

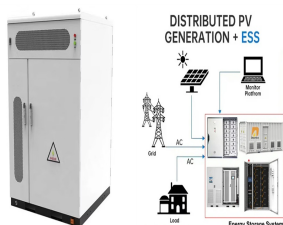


Before you look to install your solar panels, you need to consider if they are suitable for your roof. The factors you need to consider are roof orientation, roof material, roof age and condition, and shading. Roof orientation: The angle and direction of your roof can affect the overall effectiveness of your solar panel system. Ideally you

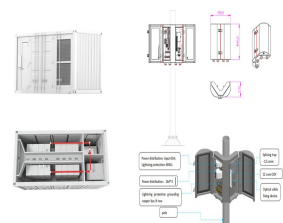
# IS THE ROOF OF A VILLA SUITABLE FOR INSTALLING PHOTOVOLTAIC PANELS



A PV array operating under normal UK conditions will produce many times more energy over its lifetime than was required for its production. Some mistakenly think that PV panels don't produce as much energy as they take to manufacture, but this stems from the very early days of the satellite industry, when weight and efficiency was far more important than cost.



Here is a stepwise description of how to install solar panels on the roof:  
Step 1: Identify the Roof Space . Solar rooftop panels are installed using solar mounts. Identifying the area for solar panel installation helps determine how many solar mounts you need. Also, while identifying the total rooftop area, you can specify the extent of shade



The general guidance indicated herein, addresses the design, installation, and maintenance aspects of roof mounted PV systems. The design and technology of PV panels continues to evolve, meaning that the risks associated, and their appropriate controls, is dynamic and continues to be developed. This document considers roof mounted PV systems only.

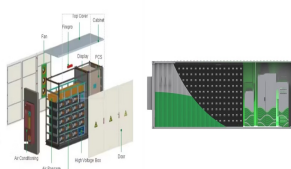


Flat roof systems take up more space per kW than on-roof photovoltaic systems. This is because, there must be a separation between rows of the PV panels, in order to prevent one row from shading another. Installing Solar Panels on a flat roof is dependant on your roof structure, as it must be able to handle the additional weight.



Mount solar panels: It's now time to mount the PV modules onto the installed mounting system with the support rails in place. Installation of a PV System on a Flat Roof. Installing a photovoltaic system on a flat roof requires careful planning and execution to ensure optimal performance and stability. Here's a step-by-step guide to the

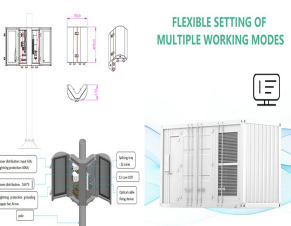
# IS THE ROOF OF A VILLA SUITABLE FOR INSTALLING PHOTOVOLTAIC PANELS



The best angle for solar PV in the UK is 35-40 degrees to the horizontal, but any roof with a pitch outside that range will only see a small drop off in generation. On flat roofs, panels are installed at a 10 degree angle to ???



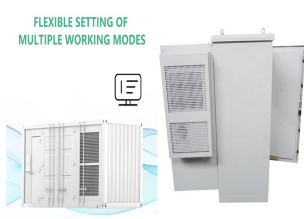
A typical residential solar panel covers about 1.5 square metres, so even a small flat roof can accommodate a few panels. However, the more space you have, the more energy you can produce. Best type of solar panels ???



In-roof frames: These integrated solar panels replace sections of the roof tiles or slates, sitting flush with the underlying roof structure. These frames are commonly used in both home renovations and new builds. ???



Installing solar PV panels on your roof can be a smart and environmentally-conscious decision, but it's essential to evaluate whether your roof is suitable for such an installation. Consider the orientation, pitch, ???



Preliminary Steps for Solar Panel Installation. Before starting with your rooftop solar panel system, make sure to do some key steps. You need to look at how much electricity you use now. Then, you decide on the right solar system size and make an equipment list. Analyzing Your Electricity Consumption. Start by checking how much electricity you

# IS THE ROOF OF A VILLA SUITABLE FOR INSTALLING PHOTOVOLTAIC PANELS



Many factors impact if your home is suitable for installing solar panels, including the type of solar panel being installed, and the orientation and pitch of the roof. " Solar PV (photovoltaic) panels generate electricity from ???



Rooftop solar equipment and installers have come a long way in recent years and most roof materials are suitable for solar panels. With that said, the best roof material is anything that will keep your solar panels secure for their 25-warrantied life or longer. Solar Panel Installation Process Transitioning to power from solar panels is an



When you start considering investing in solar panels, one of the first questions that likely crosses your mind is, "is my roof suitable?" Fortunately, many roofs in the UK are indeed suitable for solar panel installation. While your roof may not perfectly match the ideal requirements, it can still be a viable candidate for solar energy.

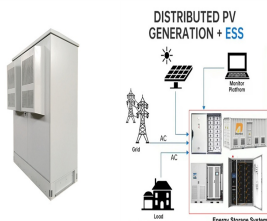


This will give the solar panel mounts a stable foundation, and will make sure they don't get damaged in stormy weather. Solar panel mounts are secured ??? Once the roof anchors have been fixed to the property, the installer will attach the solar panel mounting system to them. The framework will run both vertically and horizontally across the



One of the primary considerations for installing solar panels is the orientation of the roof. In the UK, south-facing roofs receive the most sunlight throughout the day, making them the most suitable for solar panel installation. However, east and west-facing roofs can also be viable options, although with slightly reduced efficiency.

# IS THE ROOF OF A VILLA SUITABLE FOR INSTALLING PHOTOVOLTAIC PANELS



Finding an unshaded spot is best, but sometimes shading is unavoidable. Some solar panel systems can minimise the impact of shading using "optimisers". Solar optimisers help improve the overall performance of your solar panel system. So, if one panel is shaded, it doesn't impact how much electricity the other panels can generate.



Solar panels are now an option for most homes. According to the Solar Energy Industries Association, more than 2 million PV installs are in the USA. The rapid growth is due to the many benefits these units bring. PV and ???



As a rule, 1kWp of solar PV panels installed on a south-facing roof at a good pitch will provide around 800-1,000kWh of electricity per year. This will vary according to your home's location in the UK ??? a well-oriented roof in the Devon countryside is likely to get more sun than an inner-city equivalent in Liverpool, for example.



Adopting renewable electricity is a practical way to reduce your carbon footprint and lower energy bills. Solar panels are a popular option for homeowners and business owners in New Zealand, where sunlight is plentiful in many regions. ???



Beautiful and in harmony with the architectural style. No need to destroy the roof structure during installation. Generally, the photovoltaic panels are installed using the clamp method. The installation is more complicated and needs to be firmly fixed to avoid water leakage.

# IS THE ROOF OF A VILLA SUITABLE FOR INSTALLING PHOTOVOLTAIC PANELS



The installation of photovoltaic panels should be carried out by a company with MCS accreditation. The panels will need to meet BS EN, and MCS certification standards. There are checks you can do yourself to ensure the system is running correctly. If you don't have a suitable roof, don't panic there are alternative ways to install solar



Flat roof solar panel mounting is usually done with ballasts, which can also incur extra costs during purchase. Ballasts can be around £60 to £120 per kilowatt on average but prices can vary based on sizes and whether they offer "universal" mounting or only mount certain panel systems. They can also be quicker to install making them cheaper in terms of the ???



Complete Solar Roof System - Complete Peace of Mind With Marley SolarTile (R), the integrated solar roof system has come of age to support homeowners looking to reduce the cost of running their homes.. Marley SolarTile (R) alone offers exceptional wind and fire resistance, but when combined with the complete Marley Roof System, the security of a roof that works to keep the ???



PV system installed on roof of stairhood should not exceed 1.5m high measured from the level of the roof of the stairhood. The average imposed load should not exceed 75kg/m<sup>2</sup>. Before installation, all unauthorised building works (UBWs) should be removed including those reported and acknowledged by the Buildings Department under the Reporting ???



A reputable solar panel installer should also assess whether your roof can bear the extra weight before proceeding with installation. Certain roofing materials, like thatch, aren't suitable for solar panels.

# IS THE ROOF OF A VILLA SUITABLE FOR INSTALLING PHOTOVOLTAIC PANELS



For more information on solar panel installation, check out our article on installing solar panels on roof. Maintenance and Care for Roof-Mounted Solar Panels Once your roof-mounted solar panels are installed and generating clean energy, it's important to properly maintain and care for them to ensure optimal performance and longevity.



Worried your roof isn't suitable for solar panels? Find out which is the best type of roof for solar panels & get free no-obligation quotes ??? 0330 808 1045. The majority of UK homes have a roof suitable for solar panel installation. Great news for anyone looking to generate their own renewable electricity. If you'd like to speak to an