

# IS THERE A STANDARD FOR THE HEIGHT OF PHOTOVOLTAIC PANELS



What are the different sizes of solar panels? There are 3 standardized sizes of solar panels, namely: 60-cell solar panels size. The dimensions of 60-cell solar panels are as follows: 66 inches long, and 39 inches wide. That???s basically a 66x39 solar panel. But what is the wattage? That is unfortunately not listed at all. 72-cell solar panel size.



What size solar panel do I Need? The most common solar panel sizes for residential installations are between 250W and 400W, while larger commercial installations may use panels up to 500W or more. The size of a solar panel affects its efficiency, with larger panels generally being more efficient but also more expensive and heavier.



How do I choose the right solar panel size? The size of a solar panel should be chosen based on factors such as available space, energy needs, and budget. Solar panels can be combined to create larger systems, and the size of the system will depend on the energy needs of the user. Choosing the right size of the solar panel is important for maximizing energy production and cost savings.



How does the size of a solar panel affect its efficiency? The size of a solar panel affects its efficiency, with larger panels generally being more efficient but also more expensive and heavier. The size of a solar panel should be chosen based on factors such as available space, energy needs, and budget.



How big is a 96 cell solar panel? 96-cell solar panel size. The dimensions of 96-cell solar panels are as follows: 41.5 inches long, and 63 inches wide. That???s a 63x41.5 solar panel. This form is a bit shorter but wider. This is the typical classification of solar panel sizes (based on the solar cell size). It???s a bit theoretical and quite useless for most calculations.

# IS THERE A STANDARD FOR THE HEIGHT OF PHOTOVOLTAIC PANELS



How much space does a solar panel take up? In the 4th column there, you can see the calculated solar panel square footage as well. Here are a few examples of the dimensions of the most popular solar panel wattages: A typical 100-watt solar panel is 41.8 inches long and 20.9 inches wide. It takes up 6.07 sq ft of area.



To select the right solar panel size, it is important to know the standard solar panel sizes available on the market. Every solar panel consists of solar cells, which are typically 6-by-6 inches.



Solar Photovoltaic Panels Solar photovoltaic panels are tested in to EN 61215, which normally tests the panels in isolation (without roof hooks). This standard has a similar pass/fail approach to wind loading, this time at 2,400 Pa. If the failure mode is ???



Thin-Film Panels. This solar panel is a photovoltaic (PV) panel that offers several advantages over the standard solar panel size, making them a good alternative. Pros. Some of the benefits of this solar panel type include: Sleek weight and flexibility ??? because of its weight, this solar panel is easier to install in different locations.



The wattage of a solar panel is the standard unit of measurement used to describe the power output of solar panels. In addition, it indicates how much electricity a solar panel can generate under standard test conditions. ???

# IS THERE A STANDARD FOR THE HEIGHT OF PHOTOVOLTAIC PANELS



Their standard dimensions are about: Height: 160-170 cm; Width: 90-100 cm; Thickness: 3-4 cm The typical dimensions for monocrystalline panels are: Height: 170-175 cm; Width: 110-115 ???



Once the panel is assembled it's set into 2-inch metal frame, which adds to the overall size of the panel. Of note, while there are some adhesive thin-film panels that can be installed directly on your roof, most thin film models are put into the same metal frame as the others, as it improves the durability of the solar panel.



Solar panels generate clean energy and significant savings, but they aren't a one-size-fits-all solution. The size and weight of solar panels vary depending on the make and model, with most residential panels measuring ???



Photovoltaic panels must be able to withstand high winds depending on the location and height of the building. and International Residential Code (IRC), which provide standard guidelines for structural and electrical safety as well as What is the minimum roof age considered suitable for solar panel installation? While there is no strict



The short answer: We typically recommend that the maximum domestic solar PV system size is 4kWp, or 16 standard panels (240W-250W) and takes up around 26m<sup>2</sup> of the roof area ??? the equivalent of just under two and a ???

# IS THERE A STANDARD FOR THE HEIGHT OF PHOTOVOLTAIC PANELS



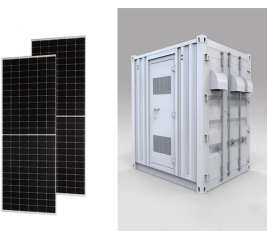
But with so many solar panel options out there, it can feel like an information overload when you're trying to figure out what you need for your home or business. Typically 1.6???1.8 meters in height and around 1 meter in width. Standard 60-cell panel: 1.7 x 1 meter: Standard solar panel sizes in the UK: Examples on how many solar



The size and efficiency of a solar panel are closely linked, affecting how much energy it makes. For those in India switching to renewable energy, it's crucial to know this. This knowledge helps make the most of solar investments. Matching Panel Dimensions with Desired Electricity Output. The size of a solar panel greatly impacts its



What Are the Standard Solar Panel Sizes? When it comes to standard solar panel sizes, like 300w or 500w, it is essential to determine the size of a solar panel system based on these standard sizes. The dimensions of a standard solar panel, no matter how a solar panel is made, typically range from 65 inches by 39 inches, with variations in size depending on the ???



When you hear about the dimensions of solar panels, it refers to the physical size of the panel, usually in length, width, and height. While there isn't usually a large variety or a standard dimension range, we've looked at ???



Fire resistance of roof coverings esp roof integrated PV panels, PV tiles & PV slates ; Cable penetrations through walls, ceilings and floors must not assist the spread of fire ; Adequate ventilation of heat producing equipment e.g solar PV ???

# IS THERE A STANDARD FOR THE HEIGHT OF PHOTOVOLTAIC PANELS



Solar panel frames are systems specifically designed to hold photovoltaic modules in place and provide the optimal tilt to capture the maximum amount of solar energy. Their importance lies in the fact that they guarantee ???



Source: Mission Solar Energy Usually, residential rooftop solar panels are approximately 65 inches tall, 40 inches wide, and 2 inches thick. In feet, that would be 5.4 ft. by 3.3 ft.. Commercial solar modules are usually slightly larger in length and width only.. However, with greater technological innovations in recent years, there is no longer a clear cut distinction ???



The cell layout of a 72-cell solar panel is 6x???12 (6 columns and 12 rows). Standard Solar Panel Dimensions in mm. A solar panel's wattage and cell design determine its overall physical dimensions and mass. In general, ???



How big is a standard solar panel? There is no "standard" size for a solar panel because the dimensions vary depending on the power, the manufacturer, and the type of cells used. However, we can identify two main categories of solar panels: Residential solar panels.



Solar panel size per kilowatt and wattage calculations depend on PV panel efficiency, shading, and orientation. But even today there is no definite answer for how large solar panels are, because the answer varies. which can be easily converted to centimetres or meters. For example, a standard PV cell's dimensions in length and breadth

# IS THERE A STANDARD FOR THE HEIGHT OF PHOTOVOLTAIC PANELS



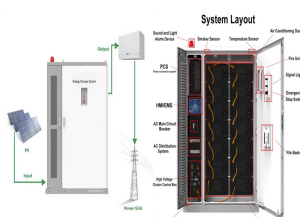
It's natural to have questions about solar panel size when determining how many you can fit on your property. Generally, each panel is 66 inches by 40 inches. Average Solar Panel Dimensions. Standard residential ???



PV panel systems, i.e. those where the PV panels form part of the building envelope. While commercial ground-mounted PV systems are not covered in detail in this guide, the risk control principles discussed are similar. Hazards to PV installations other than fire ??? such as theft and flood ??? are mentioned for



The 60-cell and 72-cell panels are standard for residential and commercial installations due to their practicality. 96-cell panels, though offering more power, can be challenging to fit on roofs as they measure approximately 17.5 square feet. Solar Panel Type Panel Width Panel Height Panel Depth Panel Weight (lbs) Pros Cons; 60-cell: 39" 66



Solar Panel Size. It focuses on maximum electricity generation and overall capacity rather than the quantity of panels. To calculate the required system size, multiply the number of panels by the output. For example, a 6.6 ???



One of the most important ways to combat climate change and the global energy issue is by promoting the use of solar energy. About 80% of the energy required to heat indoor spaces and water can be replaced by solar ???



# IS THERE A STANDARD FOR THE HEIGHT OF PHOTOVOLTAIC PANELS



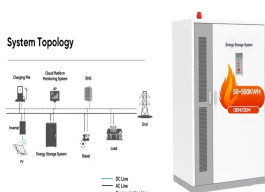
Are there building regulations for solar panels? There are building regulations for solar panels, as there are for most home improvements. These government regulations are frequently updated to ensure that any ???



Working at height . An example of completely unacceptable installation work practices that could easily result in death or serious injury. Unsafe work at height like this would normally lead to immediate enforcement action by HSE inspectors ??? Solar panel installation is not short duration work and will need scaffolding or similar equipment.



4 ? The thickness of a solar panel too typically ranges between 1.25 inches and 1.6 inches and may vary depending on the manufacturer. A commercial solar panel, such as those you would see on top of a warehouse or hospital, measures about 78 inches (6.5 feet) by 39 inches (3.35 feet). The Standard Size of a Solar Panel



A ground-mounted solar panel is set up on the ground on a standard pole-mount installation. A few variants of ground-mount solar panel systems change their facing according to the sun's position to ensure maximum exposure to sunlight. Pros:



The goal here is to get to the average solar panel size by wattage. You can find typical dimensions of 100W, 150W, 170W, 200W, 200W, 220W, 300W, 350W, 400W, and 500W solar panels summarized in the chart below. But, just to ???