

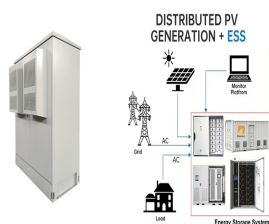
ISLE OF MAN ZAISH ENERGY



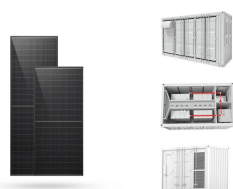
Isle of Man Energy, Murdoch House, South Quay, Douglas, Isle of Man, IM1 5PA. 01624 644444. New customers . Switch to gas. Open an account. Existing customers . View my bills. Pay my bill. Submit meter reading. Order gas delivery. Close my account. Priority care. Vulnerability commitment. Safety . Dial before you dig. Emergencies & gas escapes.



Installed by Isle of Man Energy approved contractors. Get a free consultation . Call us on 644444 *Terms and conditions apply. Subject to site survey. Example price includes Vailant EcoTec Pro 28 combi boiler fully installed with smart thermostat & 10 Years Home Plan Basic. Finance subject to status 10% deposit required followed by 120 monthly



ISLE OF MAN FUTURE ENERGY SCENARIOS 19th July 2021 ??? In December 2020, the Isle of Man Government launched its Future Energy Scenarios (FES) Strategy to determine the pathway to meet the following: ??? Electricity generation is now responsible for around 33% of all Greenhouse Gas Emissions on the



The energy sector is changing. We're having to re-evaluate our fundamental offering and consider how we contribute to a future that is greener, cleaner and better. Living in island communities amplifies this responsibility, as we can plainly see and imagine the impact that climate change is having on our coastlines, valleys, towns and wildlife.



Isle of Man Energy is excited to bring the Alpha E-Tec Efficient Hybrid Boiler and Heat Pump combination to the Isle of Man. We are thrilled to offer this new soft entry to the Isle of Man Heat Pump Market, with smart controls that can save on the ???



Isle of Man Energy's help and support pages include frequently asked questions about payments, billing, boilers, home care, switching to gas, customer support, Get in touch with one of our energy advisers. Call us on. 01624 644444. Send us a message . New customers . Switch to gas.

ISLE OF MAN ZAISH ENERGY

[Open an account.](#) [Existing customers .](#) [View my bills.](#) [Pay my](#)

ISLE OF MAN ZAISH ENERGY

Commercial and Industrial ESS

- Budget Friendly Solution
- Renewable Energy Integration
- Modular Design for Flexible Expansion



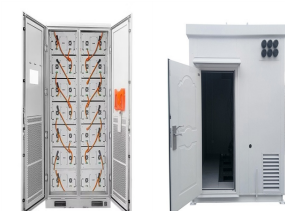
Delivered by Isle of Man Energy, for contract customers only. Standing charges apply. 47kg Red cylinder ?123.97. Customers not on a tariff. Used for. Cooking and all other uses. Collection only. From selected Isle of Man Energy partners. Please note: Prices are inclusive of VAT and valid from 1st July 2024. Each cylinder will provide 652.9459 KWH.



10 ? However the energy company has withdrawn an attempt to vary its existing licence to skip conducting 3D seismic surveys and jump to drilling an appraisal well. More from Isle ???



Zaish Energy is the leading solar EPC contractor company in UAE. With years of experience and a commitment to quality, we are the best choice for your solar project. Skip to content +971 44515024; Facebook Instagram LinkedIn-in ???



LPG gas central heating cylinders are available regardless of where you live and can be delivered to your door. For bulk tanks, we'll maintain your gas supply wherever you are on the Island, and cylinders can also be used in addition to a mains supply.



1 ? Isle of Man Energy has announced that it will be reducing gas prices in the Isle of Man by 13.8% with effect from 1 January 2025. For a typical central heating customer this equates to a saving of approximately ?156 per year*. Aidan Baglow, Managing Director of Isle of Man Energy, said: "I'm pleased to say that Isle of Man Energy is



Isle of Man Energy is committed to providing the best service to all our customers and we make specific provisions for those who require extra support. You can register as a Priority Care Customer so that we may be able to assist you with ???

ISLE OF MAN ZAISH ENERGY



Energy Management Systems Ltd. PHRM Building, Hills Meadow, Douglas, Isle of Man, IM1 5EB. Website; Email Us; Like & Share: Opening hours. Mon-Fri: 8:15am To 5:00pm: Description. Energy Management Systems Ltd. energy conservation systems energy efficiency energy consultant More. Request a Correction



Submitting your meter reading to Isle of Man Energy is quick and easy online. Complete the form below. a member of the Islands Energy Group. Website by BWI. IOM Gas Characteristics. IOM Natural Gas Characteristics. Calorific Value: ??? 37.5 to ??? 43.0 MJ/m³: Hydrogen sulphide content:



As a Sales and Business Development Manager at Zaish Energy, Mohamed Nasser contributed and will continue to contribute to the spread of solar and clean energy in the Middle East region as his passion. He has been working in the field of solar energy since 2013 in several countries in the Middle East, such as Egypt, Saudi Arabia and UAE.



Isle of Man EnergyEnergy has been providing energy for every generation for almost 200 years. Isle of Man Energy to reduce gas price by 2.8% . March 08, 2024 International Women's Day 2024 . New customers . Switch to gas. Open an account. Existing customers . ???



10 ? Isle of Man Energy has announced that it will be reducing gas prices in the Isle of Man by 13.8% with effect from January 1, 2025. The firm say that for a typical central heating ???

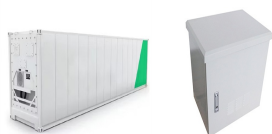


Installed by Isle of Man Energy approved contractors. Get a free consultation . Call us on 644444 *Terms and conditions apply. Subject to site survey. Example price includes Vailant EcoTec Pro 28 combi boiler fully installed with smart ???

ISLE OF MAN ZAISH ENERGY



1 ? Isle of Man Energy has announced that it will be reducing gas prices in the Isle of Man by 13.8% with effect from 1 January 2025. For a typical central heating customer this equates to ???



In December 2020, the Isle of Man Government launched its Future Energy Scenarios Strategy to determine the pathways to meet the following: Electricity generation is responsible for approximately 33% of all greenhouse gas emissions on the Isle of Man, and a majority of this is currently sourced from fossil fuels (natural gas).



Isle of Man Energy is committed to providing the best service to all our customers and we make specific provisions for those who require extra support. You can register as a Priority Care Customer so that we may be able to assist you with your needs in relation to your gas account.



Isle of Man Energy Policy. The Isle of Man Government has legislated to reduce its greenhouse gas emissions to net zero by 2050 and have an ambitious interim target to decarbonise the power sector by 2050. The Department of Environment, Food & Agriculture plays a key role in the important work of exploring the possible routes towards Government