

# IT'S SO HOT WHEN PHOTOVOLTAIC PANELS ARE INSTALLED ON THE ROOF

---



What happens if a solar panel gets too hot? The main electrical consequence of your solar panels getting too hot is a drop in their power output and, if their temperature rises above 85°C, they may stop working. Even then, most will continue functioning, but there will be a significant impact on their performance. What's the ideal temperature for a solar panel?



Do solar panels affect the temperature of a house? Research has shown that solar panels can indeed affect the temperature of a house, but not necessarily in the way that many people assume. Contrary to common misconceptions, solar panels do not significantly increase the overall temperature inside the house. Solar panels are designed to absorb sunlight and convert it into electricity.



Do solar panels heat up at 85 degrees? Even at 85°C, modern solar panels will typically produce 80% of their peak power output. It's extremely rare that solar panels will heat up past this point and as the Earth heats up, solar technology should keep up with temperature increases. Do solar panels work above 25 degrees?



Do solar panels reflect heat? In general, solar panels will reflect heat produced by the sun. This can sometimes cause the surrounding temperature to rise, but usually only by a few degrees and only within a short distance of the solar panels. There are a few things you can do to help prevent this from happening though:



Are solar panels less efficient in hot temperatures? While it's correct that solar panels can be less efficient in hot temperatures, this reduction is relatively small. According to Solar Energy UK, solar panel performance falls by 0.34 percentage points for every degree that the temperature rises above 25°C.

# IT'S SO HOT WHEN PHOTOVOLTAIC PANELS ARE INSTALLED ON THE ROOF



Do solar panels produce heat? While solar panels don't produce any heat, they will get warmer than traditional roofing materials, but this increase in temperature is nominal and will not affect the performance of your solar panel system.



A set of 10 solar panels typically weighs 200kg, so it's always best to check that your roof can support the extra weight. What size solar panel system is right for you? Figure out how much electricity your household uses, ???



Install the inverter on the support wall. Connect it to the fuse box and charge the controller to complete the electrical setup. Step 2: Work on the solar panel connections. Secure at least two parallel solar panel support rails onto the shed roof. Ensure they're anchored and weatherproofed to withstand outdoor conditions.



Solar panel inverter problems, dirty solar panels, pigeon problems under solar panels, generation meter and electrical problems with solar PV, and much more. If you haven't installed solar panels yet, consider roof-integrated panels. These can be complex to retrofit but are built into the roof, leaving no gaps for birds or rodents to get

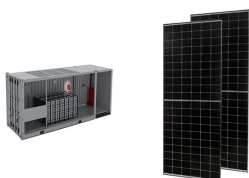


Then, it's time to install the stanchions for a strong hold on the panels. "Essentially," says Warda, "what they are is a lag bolt that goes straight into your roof rafters for a good, strong connection, a big flashing that keeps everything watertight, and a stanchion that goes about 6 inches off the roof."

# IT'S SO HOT WHEN PHOTOVOLTAIC PANELS ARE INSTALLED ON THE ROOF



The cost of solar panels on a metal roof varies depending on a number of factors, including the type of solar panel, the quality of the solar panel, and the environment in which it is installed. Cost. The average cost to install a solar panel system on a metal roof is \$19,000.



However, many solar PV-T panels are more complex to install than normal solar panels or solar thermal panels, and so it's recommended that you use a specialist installer. And, since this is a relatively new technology, finding a specialist can be more challenging. Use our guide to find the best solar panel installers.



If you have any concerns about the condition of your roof, consult a professional to ensure its suitability for solar panel installation. Preparing the Roof for Installation. Once the roof has been deemed suitable, it's time to prepare it for solar panel installation. This involves cleaning the roof surface and making any necessary repairs.



However, it's still worth installing solar panels on a slate roof. The average household will save \$537 per year on its electricity bills, and break even in 17 years ??? leaving you plenty of time to enjoy the free energy your panels produce. Are there other solar panel options for a ???



In most states, the temperature coefficient of a solar panel isn't on its own a reason to go for a more expensive model. But if you live in a hot and dry state, it's worth considering solar panels with a low-temperature coefficient.

# IT S SO HOT WHEN PHOTOVOLTAIC PANELS ARE INSTALLED ON THE ROOF



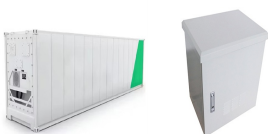
(Image credit: getty images) Hybrid solar panels, also known as solar PVT, combine the technologies of solar PV and solar thermal into one system.. How Much do Solar Thermal Panels Cost? Installing a two or three panel solar thermal system that would supply an average 200 to 300 litre cylinder will cost around £4,000 to £7,000.. The cost of solar panels ???



If you want to install solar panels on your roofs, you may need to know how many solar panels your home need. How to Install Solar Roofs? If you want to install a residential or commercial solar roof but don't know whether to choose a solar panel roof or a solar tile roof, then the following content is what you need. Installing a solar panel roof



It's also worth noting that it's not only the roofs orientation that matters, but also roof tilt and the level of shading can impact on the production level too. The most optimal roof tilt will depend on the latitude of the location, ???



Can A Solar Panel Install and Your Roof Coexist? Now you're solar-wise and roof-savvy, armed with knowledge on how to tread the fine line between energy efficiency and structural sanctity. The quest for solar panels integrating seamlessly with your roof is not just about harnessing the sun's might???it's about preserving your home's cover in the bright future of green energy.



When a solar panel array is installed on a tile roof, they will need to be attached to brackets that will lift the panels above the roof. The distance that the panels must be raised will be dependent on the material ???

# IT'S SO HOT WHEN PHOTOVOLTAIC PANELS ARE INSTALLED ON THE ROOF



While excessive heat can potentially damage certain components of a solar panel system, it is unlikely that it would cause permanent damage if the system has been properly designed and installed. However, ???



This step-by-step guide will provide you with all of the information necessary to successfully install a rooftop solar panel system. Monocrystalline panels tend to require larger roof space than other types but offer superior performance in both hot and cold temperatures compared with polycrystalline models. The first step in gaining



There are now 1.5 million solar panels on homes across the UK. As well as saving you money on energy bills, solar panels can earn you cash. And don't worry, they can still generate electricity on gloomy days, vital when ???

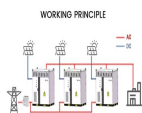


Integrated solar panels are installed flush within the roof structure, replacing sections of the roofing material, while regular panels are mounted on the rooftop. Based on your property size and the solar panel size, in-roof solar panels in the UK can save you between ?440 and ?1,005 a year. which can easily be mounted on a roof in



Roof-integrated solar panel installation is a simple process with Marley SolarTile(R) - just secure the fixings, place the first tile, push-fit additional tiles and then attach final fixings and flashings. The entire process can take less than one hour per kilowatt peak, and our integrated solar roof system is provided with all components in colour-coded boxes to make the process even easier.

# IT S SO HOT WHEN PHOTOVOLTAIC PANELS ARE INSTALLED ON THE ROOF



PV panels have limited overall efficiency and factors that affect BIPV systems are solar radiation, PV panel size, humidity, design, placement, air-gap, wind speed, and roof ventilation strategy. In hot and humid climates, PV modules ???



To understand whether solar panels make your house hotter, it's important to explore the science behind solar panel heat. Two key factors come into play: solar absorption and reflection and the thermal properties of ???



Solar panel installation cost A smaller upfront cost could mean that it's quicker to break even, though a set-up with a smaller installation will probably generate less electricity. SEG tariff rates These vary widely between energy companies, so it's worth shopping around.



What's the cheapest way to get solar panels installed??? and is it only worth doing on a south facing roof? Installing solar panels could increase the value of your home by ?11,500



In the past I've written about solar panel clamping zones which determine where, on a solar panel's edge, you can place the clamps that attach the modules to their mounting rails. What I didn't do was go into just where on a roof solar panels can and can't be installed. Depending on the roof mounting system used to attach the panels, there may be "exclusion ???

# IT S SO HOT WHEN PHOTOVOLTAIC PANELS ARE INSTALLED ON THE ROOF



PV panel anchors are installed and flashed before installing racks and panels. (Source: IBACOS.) Figure 6. Lag-Bolted L Brackets for Mounting PV Panels to Roof Decking. (Source: Solar Rating and Certification Corporation 2020.) ???



The direction in which sunlight is getting to your panel is changing throughout the day so that the 60% efficiency I mentioned above isn't going to be continuous. lead, and arsenic in every solar panel. It's difficult to claim a green-energy advancement when the process, existence, and degradation life cycle of a solar panel are well



Keen to know more about the benefits of solar panels? Take a look at these 7 Solar Panel Benefits. Free solar panel quotes for your roof. There's likely to be a way for solar panels to be installed onto the vast majority of properties. And ???



In pure efficiency terms, solar-thermal panels are over three times as efficient (50 percent or so) at harvesting energy as solar-electric (photovoltaic) panels (typically around 15 percent), but that doesn't mean they're three times better: ???



Although solar energy production may decrease on cloudy days, install solar roof panels to maximise your home's energy efficiency regardless of the season. This dual-function approach of solar panel roofing and insulation makes it easier to maintain a comfortable indoor environment while benefiting from renewable energy.

# IT S SO HOT WHEN PHOTOVOLTAIC PANELS ARE INSTALLED ON THE ROOF



Solar panels can suffer slight losses in power output when they're too hot, so mild or cold conditions suit them best. You'll see a small drop in generation above 25°C, though solar panel manufacturers are rapidly ???



Integrated solar panels are installed within the structure of your roof, rather than on top of its tiles like regular solar panels. Installing integrated solar panels for an average 3-bedroom home costs somewhere between ?5,000 ??? ?6,000. With ???



Both types of panels turn daylight into electricity using the photovoltaic effect. When light hits the solar cells, photons from the light are absorbed by the cells, creating an electric field across the layers of the solar panel and causing electricity to flow. It's the same process whether the panels are integrated into the roof or on top of it.



In recent years, solar panels have become more popular than ever before, with the UK seeing more than 17,000 new solar installations each month so far in 2023. This isn't surprising, given that solar panels can dramatically cut your ???