

# JAPAN S SOLAR BIOGAS POWER STATION



Is host launching a biogas project in Japan? Dutch bioenergy installation firm Host has launched its first biogas project in Japan. Working in partnership with Techno System, a Japanese energy firm, Host has signed a contract for a 550kWe biogas power plant project in Ishigaki Island, off the south-west coast of Japan.



How much energy is generated from biogas in Japan? Industry-specific and extensively researched technical data (partially from exclusive partnerships). A paid subscription is required for full access. The generation capacity of energy from biogas in Japan reached 85 megawatt in 2021. Figures increased significantly compared to seven megawatt in 2012.



Does Japan have a bioenergy sector? ementation of bioenergy in Japan ??? 2021 update This report was prepared from the 2021 IEA World Energy Balances and Renewables Information, combined with data and information provided by the IEA Bioenergy Executive Committee and Task members<sup>1</sup>. Reference is also made to



What are the main sources of energy in Japan? gy Development Organization (NEDO) HIGHLIGHTS Oil products, coal and natural gas are still dominating the Japanese energy system. Renewables make up a modest share of 6% of total energy supply in Japan in 2019. The renewable energy share in final energy consumption is 8%<sup>2</sup>. Arou



What is Japan's energy supply? IN NATIONAL ENERGY SUPPLY TOTAL ENERGY SUPPLY The total energy supply (TES) of Japan in 2019 amounted to 17.4 exajoule (EJ) with fossil fuels (oil, coal, gas) contributing 88%. Oil products (6.7 EJ) are the dominant fuel, representing 38% of total energy supply. Coal represents another

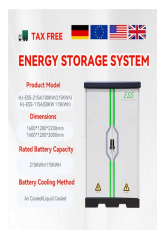
# JAPAN S SOLAR BIOGAS POWER STATION



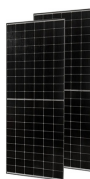
Is Japan still based on fossil fuels? n Japan are still largely based on fossil fuels. In terms of transportation biofuels, Japan is putting assets, the increase of transport biofuels (which While data for 2020 are starting to become available at national level, it was decided to consider trends up to 2019 for good comparability and benchmarking betw



An integration in the environment of fractional order (FO) calculus for proportion-al-integral-derivative (PID) controllers and fuzzy controllers, referred to as FO-Fuzzy-PID controllers, tuned



Renova Inc (Renova) is a renewable energy developer and power producer. It owns, develops and operates solar PV, biomass, wind and geothermal power plants. The company's power plants portfolio includes Suigo-Itako Solar, Kikugawa-Ishiyama Solar, Futtsu Solar, Kikugawa-Horinouchiya Solar, Kikugawa-Ishiyama Solar and Kokonoe Solar among ???



Solar power is rapidly expanding in response to global calls for reducing greenhouse gas emissions. This source of renewable energy has changed the landscape in Japan. Vast fields covered with solar panels, once ???



6 Table 3: Total energy supply per capita in 2019 for different bioenergy carriers Supply per capita Median IEA Bioenergy members Bioenergy 3.3 GJ/cap 10.6 Solid biofuels 2.9 GJ/cap 7.0 Renewable MSW 0.1 GJ/cap 0.8 Biogas 0.1 GJ/cap 0.7 Liquid biofuels 0.1 GJ/cap 1.5 Source: IEA (2021) World Energy Balances and Renewables Information

# JAPAN S SOLAR BIOGAS POWER STATION



At the ceremony, Yukihide Sato, the president of the company, said that "we aim for operating the safest and most secure power plant in Japan with a strong sense of teamwork." On the same day???April 15???that the completion ceremonies were being held in Fukushima Prefecture, groundbreaking ceremonies were being held for another 112MW biomass plant, ???



The recently-completed facilities at the Nakajima Treatment Plant in the service area of Toyohashi City Waterworks Bureau, are Japan's largest integrated biomass energy facilities for the combined anaerobic ???



Read the full story on Japan 2 Earth - Turning Food Waste into Energy: Methane Power Plant Opens in Sagamihara City In Sagamihara City, the Japan Food Ecology Center, Inc. (J.FEC), in collaboration with other partners, has established a power company called Sagamihara Biogas Power. On November 8, a power plant fueled by methane gas derived ???



This would eventually become one of Japan's largest Biogas Power Plant. The 124-Foot Solar-Powered Yacht Redefining Sustainable Luxury on the Seas . Spanish yacht builder Cosmopolitan Yachts has unveiled its largest and most ambitious vessel to date ??? the Cosmopolitan 125. This 124.67 foot (38-metre) catamaran represents a bold step



Food waste is now being converted into energy at Sagamihara Biogas Power, a new methane power plant aimed at achieving the Sustainable Development Goals. The Sagamihara Biogas Power gas-fired power plant, ???

# JAPAN S SOLAR BIOGAS POWER STATION



EQUIS SECURES USD 282 MILLION OF PROJECT FINANCING FOR NEW BIOMASS POWER PLANT IN JAPAN AND. ISSUES NOTICE TO PROCEED FOR 50MW NIIGATA EAST PORT BIOMASS PROJECT including onshore and offshore wind power as well as solar power, among other proactive initiatives in this field. Media Enquiries: HeShuang ???



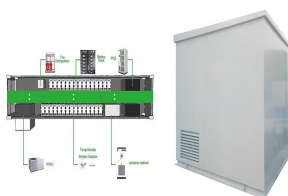
On 8 November 2023, Tana Power Plant of Sagamihara Biogas Power, Inc. (SBP), which generates renewable energy from discarded food, was officially opened, marking the first biogas project for HoSt in Japan.



Description The project was developed by Nihonkaisui TTS Kanda Power. Nihonkaisui, TS Planning and Takuma are currently owning the project having ownership stake of 68%, 30% and 2% respectively. The project generates 500GWh electricity and supplies enough clean energy to power 170,000 households.



HoSt Group is excited to announce the successful completion of the 530 kWe "Sagamihara Biogas Power" biogas plant. Located in Sagamihara, Kanagawa Prefecture in Japan. The biogas facility has begun converting pig ???



The Nakagusuku Biomass Power Plant is seen in mid-February in Uruma, Okinawa Prefecture. On Hateruma Island, Japan's southernmost inhabited island off the coast of Ishigaki Island, Okinawa Electric succeeded in ???



For years, J-POWER has been providing technical consulting services on power stations, transformers and transmission equipment, etc. Since our first overseas project in 1962, we have undertaken over 360 projects in 64 countries and regions. J-POWER's Solar Power Generation Operations in

# JAPAN S SOLAR BIOGAS POWER STATION

---

Japan (PDF:247KB) Oct 31, 2024. Release of Financial

# JAPAN S SOLAR BIOGAS POWER STATION



Bangladesh is affluent in almost all these resources especially in Biogas Energy and Solar Energy. Solar Panels along with biogas plant can be used to produce power in different areas of this country.



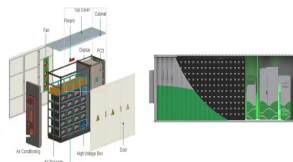
Here is a list of the largest Japan PV stations and solar farms. Get to know the projects" power generation capacities in MWp or MWAC, annual power output in GWh, state of location and exact location on the map, name of developer, year of connection to the electric grid, land size occupied, and other interesting facts.



Japanese renewable power producer Renova Inc (TYO:9519) announced on Thursday it has launched construction of a 74.95-MW biomass power generation plant in Shizuoka prefecture. Renova developed this project and has a 38% stake, while Chubu Electric Power Co Inc (TYO:9502) holds 34%.



Sagamihara Biogas Power is built next to the pig feed factory JFEC. The new plant produces annually 1.9 million Nm3 biogas from pig feed waste and food waste using anaerobic digestion. Applying a combined heat ???



The power generated from the project is sold to TEPCO Power Grid under a power purchase agreement. For more details on Kamisu-Ibaraki Biomass Power Plant, buy the profile here. About Japan Renewable Energy Japan Renewable Energy Corp (JRE) is a renewable energy company. It develops wind, solar, biomass, and natural energy-based ???



Hibikinada Biomass Power Station is a 33.6MW biopower project. It is located in Fukuoka, Japan. According to GlobalData, who tracks and profiles over 170,000 power plants worldwide, the project is currently active. It has been developed in a single phase. Post completion of

# JAPAN S SOLAR BIOGAS POWER STATION

---

construction, the project got commissioned in December 2018.

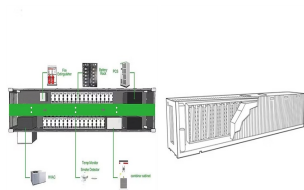
# JAPAN S SOLAR BIOGAS POWER STATION



With the new power plant, Renova reaches 400 MW of operating large-scale solar photovoltaic (PV) plants and wood biomass power facilities. Overall, the Japanese company has roughly 900 MW of operating or under-construction facilities.



?????(R)????? 1/4 ??,??? ?????? In Sagamihara City, the Japan Food Ecology Center, Inc. (J.FEC), in collaboration with other partners, has established a power company called Sagamihara Biogas Power. On ???



Now that the population is growing, the expenditure on basic needs of life is also increasing due to a lack of or less availability of resources. The economy consumed electricity is reaching peaks as its main fuel, coal, is decreasing day by day. Due to this, 90% of the population who are in the middle class, lower middle class, or rural areas are economically poor and are ???



The potential for using solar energy to become a hybrid power plant, which are Semarang City, Surakarta City, Bekasi City, and Denpasar City, can be processed using data regarding the intensity of solar radiation and regional temperature obtained from the NASA (National Aeronautics and Space Administration) website.



Hokkaido Oyafuru Solar Power Plant A Solar power generation: 3,013.5 kW: July 19th, 2024: Hokkaido: Hokkaido Oyafuru Solar One of east Japan's largest solar power plants. This solar power plant is located on unused semi ???



Web: <https://twojaelektryka.com.pl>

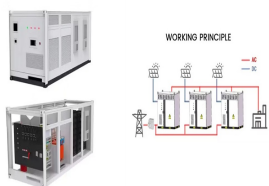
# JAPAN S SOLAR BIOGAS POWER STATION



Onahama Biomass Power Plant is a 75MW biopower project. It is located in Fukushima, Japan. PT. Menu. Search. Sections. Home; News; CI??nera signs PPA for 600MW Snowflake A solar project in Arizona; Onahama Biomass Power Plant, Japan. December 14, 2021. Share Copy Link; Share on X; Share on LinkedIn;



Woody biomass power stations are being used to meet renewable energy goals in Japan and South Korea despite their lack of financial viability and maintenance of the status quo for emissions. The latest data in Global Energy Monitor's Global Bioenergy Power Tracker (GBPT) shows that Japan has 3.8 gigawatts (GW) of woody bioenergy capacity projected ??? Continued



Fuel cell vehicles (FCVs), a decarbonized transportation option, depend on hydrogen supply stations. The plant produces hydrogen from the methane in biogas and sells it at the "Shikaoi Hydrogen Farm," a station built in May 2022 by two private companies. This is the only station in Japan that sells hydrogen derived from livestock manure.