

# LAND COST OF ENERGY STORAGE POWER STATION



Are battery storage costs based on long-term planning models? Battery storage costs have evolved rapidly over the past several years, necessitating an update to storage cost projections used in long-term planning models and other activities. This work documents the development of these projections, which are based on recent publications of storage costs.



Which energy storage technologies are included in the 2020 cost and performance assessment? The 2020 Cost and Performance Assessment provided installed costs for six energy storage technologies: lithium-ion (Li-ion) batteries, lead-acid batteries, vanadium redox flow batteries, pumped storage hydro, compressed-air energy storage, and hydrogen energy storage.



Do gas-fired power plants benefit from low fuel prices? In the United States, gas-fired power plants benefit from the expected low fuel prices in the region, although fuel price assumptions are, in general, uncertain. Nevertheless, in terms of the LCOE of the median plant, onshore wind and utility scale solar PV are, assuming emission costs of USD 30/tCO<sub>2</sub>, the least cost options.



How flexible is a solar energy storage system? The thermal energy storage system is the main driver for the high flexibility of CSP systems. Primarily due to the stochasticity of the solar resource, CSP plants without storage operate with capacity factors in the range of 22-28%, depending on technology and location.

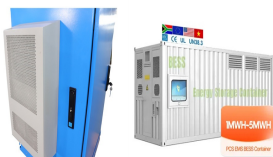


Can concentrating solar power be integrated with thermal energy storage? Concentrating solar power (CSP), when integrated with thermal energy storage (TES), can address both intermittency and storage needs by providing dispatchable renewable electricity.

# LAND COST OF ENERGY STORAGE POWER STATION



What is the capacity of a CSP plant without storage? Primarily due to the stochasticity of the solar resource, CSP plants without storage operate with capacity factors in the range of 22???28 %, depending on technology and location . In comparison, including different TES capacities increases these values by more than 90 % .



The land cost for energy storage power stations varies significantly based on location, type of energy storage technology utilized, local permitting regulations, and the potential for land leasing or purchase agreements. 2. Factors influencing the price per acre include proximity to urban centers, zoning laws, and land use restrictions.



Moreover, a coupled PV-energy storage-charging station (PV-ES-CS) is a key development target for energy in the future that can effectively combine the advantages of photovoltaic, energy storage and electric vehicle charging piles, and make full use of them . The photovoltaic and energy storage systems in the station are DC power sources, which



For the first time, information on the costs of storage technologies, the long-term operation of nuclear power plants and fuel cells is also included. The detailed plant-level cost data for 243 power plants in 24 countries, both OECD and non-OECD, is based on the contributions of participating governments and has been treated according to a



Solar and wind energy are being rapidly integrated into electricity grids around the world. As renewables penetration increases beyond 80%, electricity grids will require long-duration energy storage or flexible, low-carbon electricity generation to meet demand and help keep electricity prices low. Here, we evaluate the costs of applicable technologies based on ???

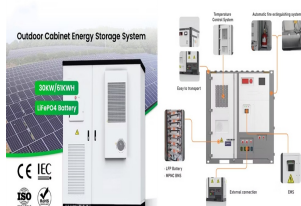
# LAND COST OF ENERGY STORAGE POWER STATION



Key Takeaways. Understanding the potential of a 10 mw solar power plant to meet energy demands.; Exploring the financial benefits and return on investment for solar power development.; Appraising Fenice Energy's role in promoting renewable energy generation with its extensive experience.; Insight into India's ambitious target for utility-scale solar plant capacity ???



Finally, land acquisition costs can also significantly influence the overall financial assessment; identifying suitable locations for energy storage installations often incurs substantial expenses for purchasing or leasing land, which must be factored into the total cost calculation.



Cost control: The construction and operation costs of energy storage power stations are high, and cost control is one of the difficulties in operation and maintenance management. Cost control needs to be carried out from aspects such as equipment procurement, maintenance costs, and operating personnel.



The Investment Tax Credit (ITC), previously applicable to solar projects, has been expanded to include energy storage systems. The base ITC for energy storage is 6% of the project's qualifying costs. However, this can be increased to 30% if the project meets prevailing wage and apprenticeship requirements (PWA). To further incentivize



Concentrating solar power (CSP) with thermal energy storage can provide flexible, renewable energy, 24/7, in regions with excellent direct solar resources CSP with thermal energy storage is capable of storing energy in the form of heat, at utility ???

# LAND COST OF ENERGY STORAGE POWER STATION



The power station, with a 300MW system, is claimed to be the largest compressed air energy storage power station in the world, with highest efficiency and lowest unit cost as well. With a total investment of 1.496 billion yuan ( \$206 million ), its rated design efficiency is 72.1 percent, meaning that it can achieve continuous discharge for six



In the multi-station integration scenario, energy storage power stations need to be used efficiently to improve the economics of the project. In this paper, the life model of the energy storage power station, the load model of the edge data center and charging station, and the energy storage transaction model are constructed. Yuan Y. and



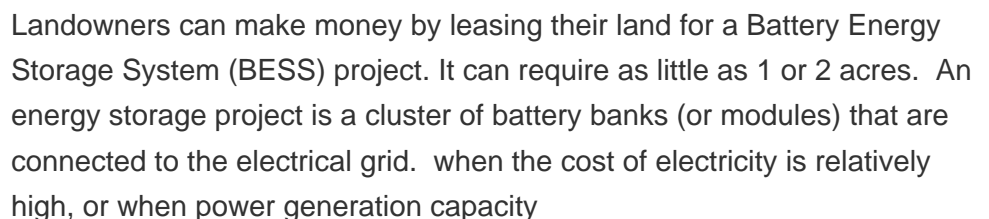
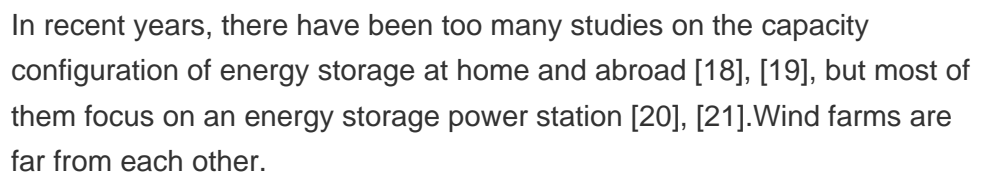
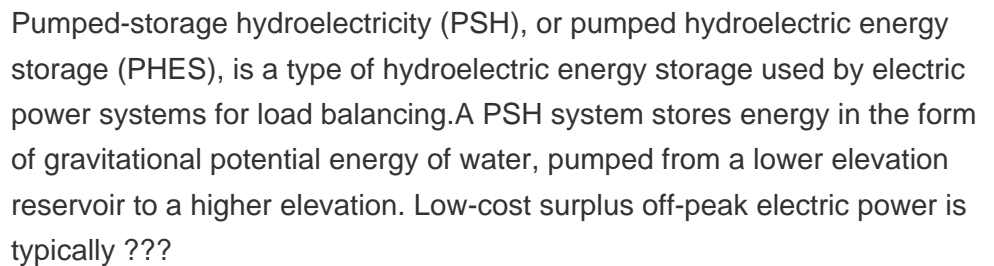
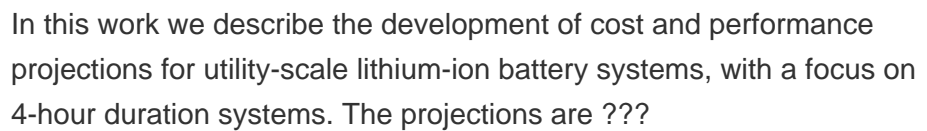
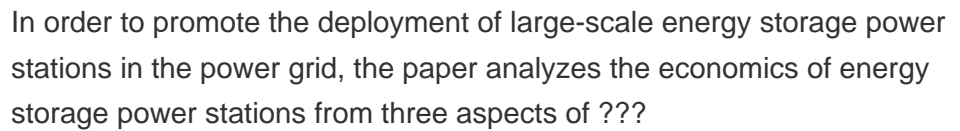
MW/1,200MWh phase one of the Moss Landing battery energy storage system (BESS) was connected to California's power grid and began operating in December 2020. Construction on the 100MW/400MWh phase two expansion was started in September 2020, while its commissioning took place in July 2021.



High-capacity systems of over 100kW are called Solar Power Stations, Energy Generating Stations, or Ground Mounted Solar Power Plants. A 1MW solar power plant of 1-megawatt capacity can run a commercial establishment independently. This size of solar utility farm takes up 4 to 5 acres of space and gives about 4,000 kWh of low-cost electricity every day.



Wind turbines and solar photovoltaic (PV) collectors comprise two thirds of new generation capacity but require storage to support large fractions in electricity grids. Pumped hydro energy storage is by far the largest, lowest cost, and most technically mature electrical storage technology. Closed-loop pumped hydro storage located away from rivers ("off-river") ???



# LAND COST OF ENERGY STORAGE POWER STATION



Renewable energy plays a significant role in achieving energy savings and emission reduction. As a sustainable and environmental friendly renewable energy power technology, concentrated solar power (CSP) integrates power generation and energy storage to ensure the smooth operation of the power system. However, the cost of CSP is an obstacle ???



All energy production takes up land, but which sources use the most land, and which use it most efficiently? One part of the total land use is the space that a power plant takes up: the area of a coal power plant, or the land covered by solar panels. the costs of land use can vary a lot depending on where energy sources are built, and



Concentrating solar power (CSP) is a high-potential renewable energy source that can leverage various thermal applications. CSP plant development has therefore become a global trend. However, the designing of a CSP plant for a given solar resource condition and financial situation is still a work in progress. This study aims to develop a mathematical model to analyze the ???



Among all forms of energy storage, pumped storage is regarded as the most technically mature, and is suitable for large-scale development, serving as a green, low-carbon, clean, and flexible



A battery energy storage system (BESS) is an electrochemical device that charges (or collects energy) from the grid or a power plant and then discharges that energy at a later time to provide electricity or other grid services when needed. Several battery ???



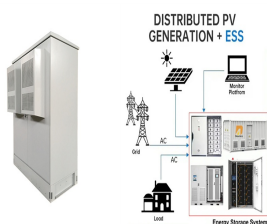
# LAND COST OF ENERGY STORAGE POWER STATION



??? The 2022 Cost of Wind Energy Review estimates the levelized cost of energy (LCOE) for land-based, offshore, and distributed wind energy projects in the United States. ??? LCOE is a metric used to assess the cost of electricity generation and the total power-plant-level



The U.S. Department of Energy's (DOE) Energy Storage Grand Challenge is a comprehensive program that seeks to accelerate the development, commercialization, and utilization of next-generation energy storage technologies. In support of this challenge, PNNL is applying its rich history of battery research and development to provide DOE and industry with a guide to ???



This report discusses how a strategic integration of energy storage in power plant decommissioning plans can mitigate these negative effects while providing energy system, environmental, and societal co-benefits (Table S.1). Less land use Economic Utility cost of compliance ??? Avoided fines ??? Avoided collections and terminations ???



Q: What is the cost of a 5 MW solar power plant? A: The cost of a 5 MW solar power plant can range from \$2.75 million to \$7.5 million or more, depending on factors such as location, labor, equipment, and project development costs. Q: ???



Building a solar farm costs about \$0.80 to \$1.36 per watt to install, not including the cost of land. By acreage, building a solar farm typically costs between \$400,000 and \$500,000 per acre. If you live on a large plot of land, you might consider building a solar farm as a new business venture.

# LAND COST OF ENERGY STORAGE POWER STATION



It's not just homes and businesses that can benefit from energy storage, however???battery systems can be scaled up to benefit the power grid and take the pressure off utilities. Utility-scale energy storage systems are an efficient, environmentally friendly way to store and deliver energy. Benefits of Utility-Scale Energy Storage. These



300 MWh is perhaps big or even "huge" for a battery storage but not generally for storing energy. 300 MWh is about the energy that a typical nuclear power plant delivers in 20 minutes. A modern pumped hydro storage, for example (Nant-de-Drance, Switzerland), stores about 20 GWh (with turbines for 900 MW) what is about 67 times the 300 MWh.