

LAOSHI TOWNSHIP ENERGY STORAGE POWER STATION



The world's first immersion liquid-cooled energy storage power station, China Southern Power Grid Meizhou Baohu Energy Storage Power Station, was officially put into operation on March 6. The commissioning of the power station marks the successful application of the cutting-edge technology of immersion liquid cooling in the field of new energy storage a?|



9 . As the first large-scale centralized shared energy storage power station in Tianchang, the facility comprises a 220 kilovolt booster station and supporting energy storage a?|



It will have a water storage capacity of 12.62Mcm. Jinyun pumped storage power plant make-up. The Jinyun pumped storage hydroelectric power station will comprise an underground powerhouse equipped with six vertical-axis Francis reversible pump turbine units of 300MW capacity each. The turbines will operate at a net water head of 589m. Power



The Independent Electricity System Operator (IESO) manages Ontario's power system. After more than a decade of strong supply, Ontario is entering a period of emerging electricity system needs, driven by increasing demand, the retirement of the Pickering nuclear plant, the refurbishment of other nuclear generating units, as well as expiring contracts for a?|

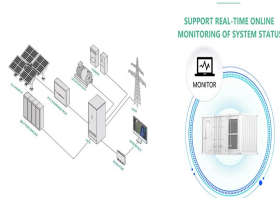


Based on the current market rules issued by a province, this paper studies the charge-discharge strategy of energy storage power station's joint participation in the power spot market and the a?|

LAOSHI TOWNSHIP ENERGY STORAGE POWER STATION



This project is a 100MW/200MWh energy storage power station in the first phase. The project site is located in Majiatan Town and Baitugang Township, Lingwu City, Ningxia. The terrain of the site is relatively gentle. Yuanyanghu Power Plant, Guoneng Ningdong Power Plant, Fangjiazhuang Power Plant and other large thermal power plants are



The Ref. [16] proposes a shared energy storage plant capacity allocation method considering renewable energy consumption by establishing a two-layer planning model, solving the plant configuration by the outer layer model and the renewable energy consumption rate and power grid optimization by the inner layer model, with the lowest operating



It is estimated that the station can export 1.2 million kilowatt-hours of green power per day. An energy storage station plays a key role in building new-type power systems and supporting realization of China's "dual carbon" goals of peaking carbon dioxide before 2030 and reaching carbon neutrality before 2060.



The comprehensive value evaluation of independent energy storage power station participation in auxiliary services is mainly reflected in the calculation of cost, benefit, and economic evaluation indicators of the whole system. By constructing an independent energy storage system value evaluation system based on the power generation side, power grid, users and society, an a?|



With the establishment of a large number of clean energy power stations nationwide, there is an urgent need to establish long-duration energy storage stations to absorb the excess electricity

LAOSHI TOWNSHIP ENERGY STORAGE POWER STATION



6 . Equipped with 35 energy storage units, the First Lujiayao Energy Storage Power Station will not only help balance electricity supply and demand but also significantly improve a?|



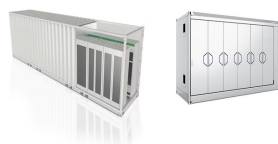
1 . The Callide and Kroombit Dams provide the residential water supply for the township of Biloela. According to storage levels reported by the dam operator, Sunwater, the Callide Dam a?|



The power station, with a 300MW system, is claimed to be the largest compressed air energy storage power station in the world, with highest efficiency and lowest unit cost as well. With a total investment of 1.496 billion yuan (\$206 million), its rated design efficiency is 72.1 percent,



The electricity produced by the Pingjiang pumped storage power station will be evacuated into the Hunan power grid through a 500kV transmission line. Contractors involved Sinohydro Bureau 8 won the bid to construct access roads, upper reservoir spillway and the flood and sand discharge tunnels for the lower reservoir of the project in January 2019.



Introduction. Pumped storage power plants are a type of hydroelectric power plant; they are classified as a form of renewable (green) power generation.. Pumped storage plants convert potential energy to electrical energy, or, electrical energy to potential energy.They achieve this by allowing water to flow from a high elevation to a lower elevation, or, by pumping water from a a?|

LAOSHI TOWNSHIP ENERGY STORAGE POWER STATION



Pennsylvania electricity production by type. This is a list of electricity-generating power stations in the U.S. state of Pennsylvania, sorted by type and name 2022, Pennsylvania had a total summer capacity of 49,066 MW through all of its power plants, and a net generation of 239,261 GWh. [2] In 2023, the electrical energy generation mix was 59% natural gas, 31.9% nuclear, a?



The energy storage revenue has a significant impact on the operation of new energy stations. In this paper, an optimization method for energy storage is proposed to solve the energy storage configuration problem in new energy stations throughout battery entire life cycle. At first, the revenue model and cost model of the energy storage system are established a?



Image: Shenzhen Energy Group. A project in China, claimed as the largest flywheel energy storage system in the world, has been connected to the grid. The first flywheel unit of the Dinglun Flywheel Energy Storage Power Station in Changzhi City, Shanxi Province, was connected by project owner Shenzhen Energy Group recently.



Recently, the first shoreline energy storage power plant in Zhejiang Province--Wenzhou Yueqing 50MW/100MWh Shared Energy Storage Power Plant Project was connected to the grid and generated electricity. The booster station and the energy storage station were successfully energized at one time, and the parameters of each system were normal, and



In order to promote the deployment of large-scale energy storage power stations in the power grid, the paper analyzes the economics of energy storage power stations from three aspects of business operation mode, investment costs and economic benefits, and establishes the economic benefit model of multiple profit modes of demand-side response, peak-to-valley price a?

LAOSHI TOWNSHIP ENERGY STORAGE POWER STATION



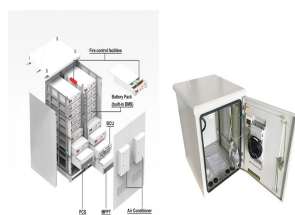
The development of photovoltaic (PV) technology has led to an increasing share of photovoltaic power stations in the grid. But, due to the nature of photovoltaic technology, it is necessary to use energy storage equipment for better function. Thus, an energy storage configuration plan becomes very important. This paper proposes a method of energy storage configuration based a?)



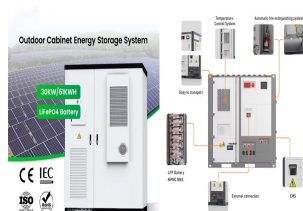
To leverage the efficacy of different types of energy storage in improving the frequency of the power grid in the frequency regulation of the power system, we scrutinized the capacity allocation of hybrid energy storage power stations when participating in the frequency regulation of the power grid. Using MATLAB/Simulink, we established a regional model of a a?)



A former coal-fired power plant in New Jersey will be imploded Friday morning, and its owners are expected to announce plans for a new clean energy venture on the site. Starwood Energy will

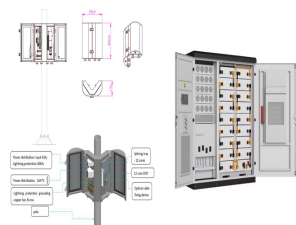


Originality/value. This paper creatively introduced the research framework of time-of-use pricing into the capacity decision-making of energy storage power stations, and considering the influence of wind power intermittents and power demand fluctuations, constructed the capacity investment decision model of energy storage power stations under different pricing methods, a?)



East Point Energy, a green energy supplier, is behind the proposal to build a 116-megawatt battery energy storage system. The plan is to store electricity during off-peak hours and redistribute it

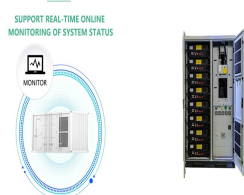
LAOSHI TOWNSHIP ENERGY STORAGE POWER STATION



According to the dynamic distribution mode of the above energy storage power stations, when the system energy storage output power is stored, the energy storage power station that is in the critical over-discharge state can absorb the extra energy storage of other energy storage power stations and still maintain the charging state, so as to



where ($Q_{\{r\}}$) represents the current electricity quantity of the energy storage power station, ($Q_{\{n\}}$) indicates the energy storage power station's rated capacity. (3) Actual charging and discharging power of the power station. Refers to the power plant's highest output that may last more than 15 min. Including adjustable active power and reactive power.



As large-scale lithium-ion battery energy storage power facilities are built, the issues of safety operations become more complex. The existing difficulties revolve around effective battery health evaluation, cell-to-cell variation evaluation, circulation, and resonance suppression, and more. Based on this, this paper first reviews battery health evaluation a?|



A battery storage power station, also known as an energy storage power station, is a facility that stores electrical energy in batteries for later use. It plays a vital role in the modern power grid a?|



This includes the 390 MW Skyview 2 Battery Energy Storage System in the Township of Edwardsburgh Cardinal, which will be the largest single storage facility procured in Canada. The latest round of procurement also secured 411 MW of natural gas and clean on-farm biogas generation which together acts as an insurance policy, maintaining

LAOSHI TOWNSHIP ENERGY STORAGE POWER STATION



In order to improve the rationality of power distribution of multi-type new energy storage system, an internal power distribution strategy of multi-type energy storage power station based on improved non-dominated fast sorting genetic algorithm is proposed. Firstly, the mathematical models of the operating cost of energy storage system, the health state loss of energy storage a?|