

LAYOUT PLANNING OF STATE-OWNED ENTERPRISE ENERGY STORAGE PLANTS



What is the energy storage system? The energy storage system includes 1x5 MWx2 h LiB, 1x2 MWx2 h VRFB. And the wind power of 99 MW had been put into operation in August 2012. The system is connected with the 35 kV bus. Through intelligent control, the system stores and releases power according to the coordinating with wind power.



What determines the spatiotemporal characteristics of power plants? The spatiotemporal characteristics of these power plants are primarily determined by the type of energy source, the variability of energy availability over time, and the geographical location of energy generators .



How many kW is a solar energy storage system? The wind power is 2x780 kW, the PV power is 300 kW. The energy storage system includes 1x2 MWx2 h PbAB, 1x500 kWx15 s SCES and 5x500 kW bidirectional converters. The system can realize the flexible shift between on-grid and off-grid operation. This bidirectional balance can guarantee the island's power utilization.



Does energy storage industry need a policy guidance? Sungrow Power Supply Co., Ltd.: energy storage industry needs the policy guidance urgently. Machinery & Electronics Business; 2015-6-22: A06. Policy and innovation are key factors for the development of energy storage technology. China Electric Power News; 2016-4-28: 008. Lin Boqiang.



Can energy storage technology be used in power systems? With the advancement of new energy storage technologies, e.g. chemical batteries and flywheels, in recent years, they have been applied in power systems and their total installed capacity is increasing very fast. The large-scale development of REG and the application of new ESSs in power system are the two backgrounds of this book.

LAYOUT PLANNING OF STATE-OWNED ENTERPRISE ENERGY STORAGE PLANTS



What is a sharing economy (SES) energy storage system? By incorporating the concept of the sharing economy into energy storage systems, SES has emerged as a new business model. Typically, large-scale SES stations with capacities of more than 100 MW are strategically located near renewable energy collection stations and are funded by one or more investors .



? 1/4 ?PDF? 1/4 ? REPORT ON THE WORK OF THE GOVERNMENT
??????202535 Delivered at the Third Session of the 14th National People's ???



State Grid Corp of China has come up with plans for more pumped storage hydropower facilities, and is stepping up efforts to promote the development of power storage in the country to play a bigger role in the ???

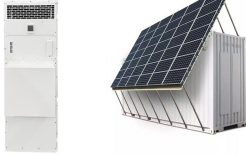


First, it summarizes the developing status of energy storage industry in China. Then, this paper analyzes the existing problems of China's energy storage industry from the ???



As per National Electricity Plan (NEP) 2023 of Central Electricity Authority (CEA), the energy storage capacity requirement is projected to be 82.37 GWh (47.65 GWh from PSP and 34.72 GWh from BESS) in year 2026-27.

LAYOUT PLANNING OF STATE-OWNED ENTERPRISE ENERGY STORAGE PLANTS



We further reformed state-owned enterprises (SOEs) and continued to improve the layout of the state-owned sector. We submitted a draft of the private sector promotion law to the Standing Committee of the National ???



Lean Manufacturing philosophy is said to be "Lean" because it uses half the human effort and half the production space (Ali et al. 2016). Ali et al. (2016) also argue that plant layout is related



As seen in Figure 5, according to how the system to transport materials is configured, six facility layout categories are defined (Hosseini-Nasab et al. Citation 2018): single-row layout problem, SRLP; double-row layout ???