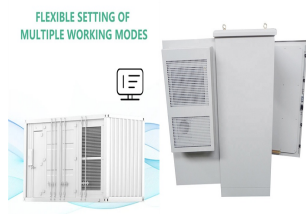
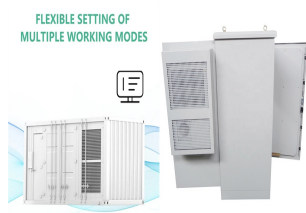


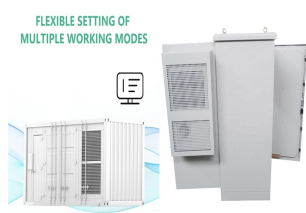
LESOTHO T



Is Lesotho a country? Lesotho (/l????su??tu?? /??? lih-SOO-too, Sotho pronunciation: [l????s????t????]), formally the Kingdom of Lesotho, formerly known as Basutoland, is a landlocked country in Southern Africa.



What is the history of Lesotho? The history of people living in the area now known as Lesotho (/l????su??tu??, - ??so??to?? /) goes back as many as 400 years. Present Lesotho (then called Basotholand) emerged as a single polity under King Moshoeshoe I in 1822.



Does Lesotho have HIV? Lesotho has the second-highest HIV prevalence rate in the world ??? more than 23 percent of people, or just under one in four people in the country are living with HIV. ^ Smith, Alex Duval (6 June 2010). "Lesotho's people plead with South Africa to annex their troubled country".



Why is Lesotho called Basutoland? Lesotho uses some of its water to generate electricity and sells some of the water to South Africa. Lesotho became a country in 1818, but it was then called Basutoland. A man called Moshoeshoe brought several of the groups of people in the area together and formed a new country with him as its king.



What is Lesotho known for? Lesotho: plateau Plateau plowed for farming, Lesotho. Two-thirds of Lesotho consists of mountains. The highest peak, Mount Ntlenyana, is 11,424 feet (3,482 metres) above sea level. The Drakensberg range forms the eastern boundary with KwaZulu-Natal.

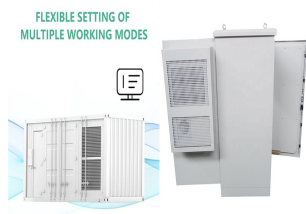


Is Lesotho a 'mountain kingdom'? An astonishingly beautiful country, this ???Mountain Kingdom??? needs to be seen to be believed. Lesotho was originally inhabited by local tribes of hunter-gatherers called the Khoisan. Later came the Bantu tribes and eventually the Sotho-Tswana peoples. In

LESOTHO T

1822 King Moshoeshoe I united the land under one rule for the first time.

LESOTHO T



5 ? Lesotho, landlocked country in Southern Africa. A scenic land of tall mountains and narrow valleys, Lesotho owes a long history of political autonomy to the mountains that ???



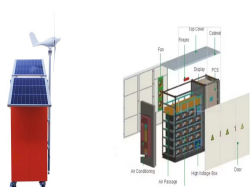
? 1/4 ?Central Bank of Lesotho? 1/4 ?,?????????? 4,? 1/4 ?? 1/4 ?NedBank ???



Das K?nigreich Lesotho (Sesotho [l??"s????t????]), 1868 bis 1966 Basutoland, ist ein Binnenstaat im s?dlichen Afrika.Lesotho ist vollst?ndig von der Republik S?dafrika umschlossen. Die Hauptstadt ist Maseru.Die Staatsform ist eine parlamentarische Monarchie.Seit 1966 geh?rt das Land nicht mehr zum Vereinigten K?nigreich, ist mit ihm aber weiterhin durch das Commonwealth ???



The history of people living in the area now known as Lesotho (/ l ?? ?? s u?? t u??,-?? s o?? t o?? / [1] [2]) goes back as many as 400 years. Present Lesotho (then called Basotholand) emerged as a single polity under King Moshoeshoe I in 1822.



Le Lesotho (en forme longue le royaume du Lesotho, en sotho du Sud Muso oa Lesotho et en anglais Kingdom of Lesotho) est un ?tat d'Afrique australe, montagneux et sans acc?s ? la mer, enti?rement enclav? dans le territoire de ???

LESOTHO T



Il Lesotho (AFI: /leʔʔsʔʔto/ [4]), ufficialmente Regno del Lesotho (Muso oa Lesotho in sotho del sud, Kingdom of Lesotho in inglese, in passato noto anche come Basotholand o Basutoland, [lʔʔ"sʔʔʔtʔʔʔʔ]), ? uno stato dell'"Africa meridionale, uno dei tre regni dell'"Africa. ? una enclave all'interno del territorio della Repubblica del Sudafrica ed ? pertanto uno stato senza sbocco al ???



Here in Lesotho it is known as white gold ??? the water which plays such an important role in the country's economy. The engineering marvel at the centre of this is incongruous in the country



5 ? Lesotho - Mountain Kingdom, Southern Africa, Vibrant Culture: In the first postindependence general elections (January 1970), the opposition BCP gained a majority of seats. The results were never released, however, and Chief Jonathan suspended the constitution, arrested leading members of the opposition, and temporarily exiled the king. Resistance to ???



Beautiful, culturally rich, safe, affordable and easily accessible from Durban and Johannesburg, mountainous Lesotho is a vastly underrated travel destination. This is essentially an alpine country, where villagers on horseback in ???

LESOTHO T



Lesotho, a high-altitude, landlocked kingdom encircled by South Africa, is crisscrossed by a network of rivers and mountain ranges including the 3,482m-high peak of Thabana Ntlenyana. On the Thaba Bosiu plateau, near Lesotho's capital, Maseru, are ruins dating from the 19th-century reign of King Moshoeshoe I. Thaba Bosiu overlooks iconic



Lesotho est un pays d'Afrique australe, enti?rement enclav? dans l'Afrique du Sud et membre du Commonwealth. Capitale : Maseru. Population (2023) : 2,330 millions d'habitants. Produit Int?rieur Brut ??? PIB (2023) : 2,05 milliards de dollars. Langues : Anglais et Sesotho. Superficie : ???



Lesotho's largest private employer is the textile and garment industry - approximately 36,000 Basotho, mainly women, work in factories producing garments for export to South Africa and the US. Diamond mining in Lesotho has grown in recent years and accounted for nearly 35% of total exports in 2015. Lesotho managed steady GDP growth at an



Lesotho has many mountains and is one of the most mountainous countries in the world. All of Lesotho is at least 1,400 m above sea level. People sometimes travel there to ski in winter. The many mountains in Lesotho mean that it rains there ???