

LINA BATTERY SOUTH GEORGIA AND SOUTH SANDWICH ISLANDS



What is South Georgia and the South Sandwich Islands? South Georgia and the South Sandwich Islands is a British overseas territory in the southern Atlantic Ocean. It is a remote and inhospitable collection of islands, consisting of South Georgia and a chain of smaller islands, known as the South Sandwich Islands.



Is South Georgia a small island? It is a remote and inhospitable collection of islands, consisting of South Georgia and a chain of smaller islands known as the South Sandwich Islands. South Georgia is 165 kilometres (103 mi) long and 35 kilometres (22 mi) wide and is by far the largest island in the territory.



What is Lina energy? LiNa Energy is helping the energy sector accelerate the transition to Net Zero, through our safer and more sustainable alternative to lithium ion. We are leading the charge to develop and commercialise low-cost solid state sodium batteries, with a focus on the renewable energy storage market.



What happened to South Georgia and the South Sandwich Islands? In 1985, South Georgia and the South Sandwich Islands ceased to be administered as a Falkland Islands Dependency and became a separate territory. The King Edward Point base, which had become a small military garrison after the Falklands War, returned to civilian use in 2001 and is now operated by the British Antarctic Survey.



Who owns South Georgia and the South Sandwich Islands? The United Kingdom claimed sovereignty over South Georgia in 1775 and the South Sandwich Islands in 1908. The territory of "South Georgia and the South Sandwich Islands" was formed in 1985; previously, it had been governed as part of the Falkland Islands Dependencies.

LINA BATTERY SOUTH GEORGIA AND SOUTH SANDWICH ISLANDS



When did South Georgia become a part of the Falkland Islands? The territory of "South Georgia and the South Sandwich Islands" was formed in 1985; previously, it had been governed as part of the Falkland Islands Dependencies. Argentina claimed South Georgia in 1927 and claimed the South Sandwich Islands in 1938.



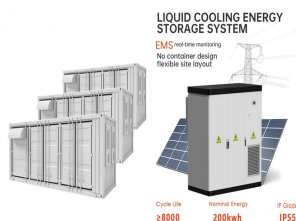
We give information about South Georgia and the South Sandwich Islands in two main ways. Although there is some overlap, they are largely complementary. The virtual tour (opens in a new window) uses a set of standard headings for each ???



Many remote islands present barriers to effective wildlife monitoring in terms of challenging terrain and frequency of visits. The sub-Antarctic islands of South Georgia and the South Sandwich



in South Georgia and the South Sandwich Islands ??? ??? 2 ?C Die Durchsage kommt 10 min fr?her als sonst, da ein Buckelwal gesichtet wurde. Steigen mit halb offenen Augen in die Klamotten um kurz darauf mit Kameras ???



South Georgia and the South Sandwich Islands. Published: September 2018. Citation: UNEP-WCMC. 2018, A review of terrestrial protected areas: South Georgia and the South Sandwich Islands. Cambridge, UK. The UN Environment World Conservation Monitoring Centre (UNEP-WCMC) is the specialist biodiversity assessment centre of

LINA BATTERY SOUTH GEORGIA AND SOUTH SANDWICH ISLANDS



The Antarctic Treaty of 1962 resulted in a separation of the British Antarctic Territory from the UK Dependencies. South Georgia then received its first stamps. In 1985 the Falkland Islands Dependencies ceased to exist and South Georgia & the South Sandwich Islands came into existence as a UK overseas territory.



By 1985, both South Georgia and the South Sandwich Islands were no longer regarded as Falkland Island Dependencies, but became considered separate British overseas territory. The Situation Now. Since that ???



South Georgia and the South Sandwich Islands Cruises to Antarctica, Polar Travel With Cool Antarctica and Antarctica Travels Notes * Prices are per person. the lowest price is usually for triple occupancy in a basic cabin, the highest for double occupancy in the best available suite. Options such as kayaking are usually booked when the cruise is booked, they may be at ???



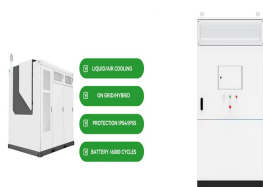
South Georgia South Georgia and its associated smaller offshore islands, islets and stacks lie between the parallels of 53°00'S and 55°00"S, and between the meridians of 34°30'W and 42°00'W. These islands are very isolated, lying about 870 miles (1,400 km) east-south-east of the Falkland Islands, 963 miles (1,550 km) north-east of



Comau has joined forces with LiNa to design an innovative and scalable manufacturing solution for solid-state sodium-metal-chloride battery cells. Through simultaneous engineering, the team has finalized a concept design, ???

LINA BATTERY SOUTH GEORGIA AND SOUTH SANDWICH ISLANDS

OverviewHistoryLanguagesGeographyClimateGovernmentEconomyEcology



The islands cover a total area of approximately 4,000 km² with South Georgia being the largest, covering 3,755 km². While much of the terrain is mountainous and unsuitable for wildlife, the low-lying coastal areas and smaller vegetated islands typically have high densities of seals and seabirds, particularly during the nesting and pupping season in the austral ???



South Georgia is inhabited by less than 50 people and leaving no trace is a guiding principle. Most expeditions will not visit the sandwich islands group due to their remoteness. The Sandwich Islands are uninhabited and further southeast from South Georgia.



South Georgia and The South Sandwich Islands : Stamps : Years List : Colnect. Buy, sell, trade and exchange collectibles easily with Colnect collectors community. Only Colnect automatically matches collectibles you want with collectables collectors offer for sale or swap. Colnect collectors club revolutionizes your collecting experience!



South Georgia and South Sandwich Islands weather. Find a forecast. Search for a place, autocomplete also includes a "Use my location" option and your recent locations Search. Please choose your location from the nearest places to : Suggested places. ???

LINA BATTERY SOUTH GEORGIA AND SOUTH SANDWICH ISLANDS



Grytviken, South Georgia and the South Sandwich Islands - Climate and weather forecast by month. Detailed climate information with charts - average monthly weather with temperature, pressure, humidity, precipitation, ???



Frequently asked questions. Want to know about travelling to South Georgia and the South Sandwich Islands? We have put together a list of the most frequently asked questions from our users such as: What is the cheapest mode of transport?, What is the quickest option?, How much do tickets usually cost? and many more.



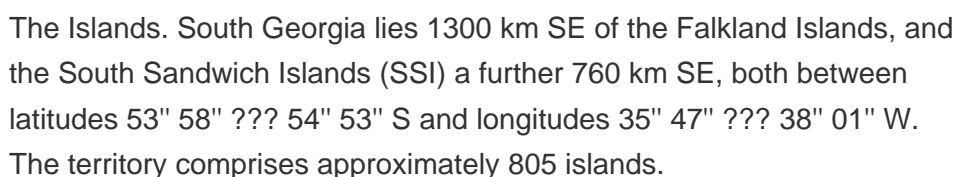
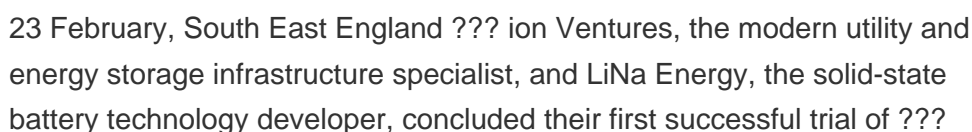
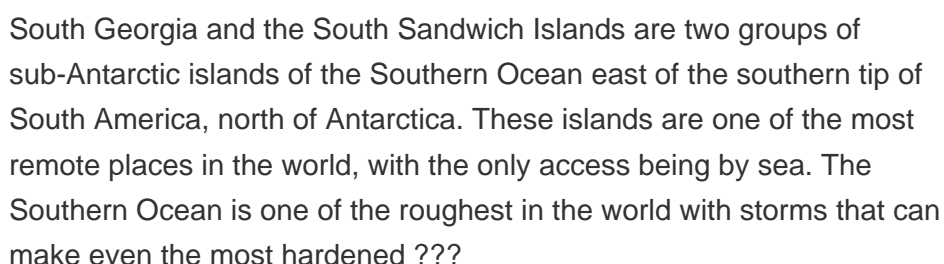
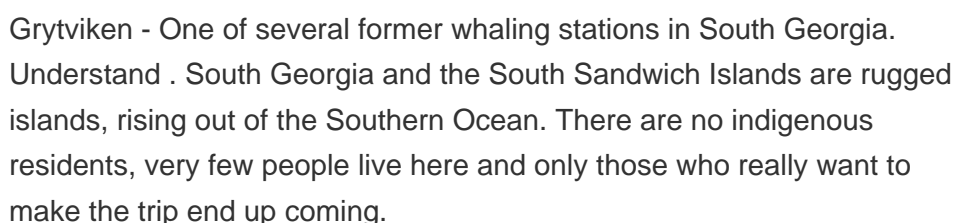
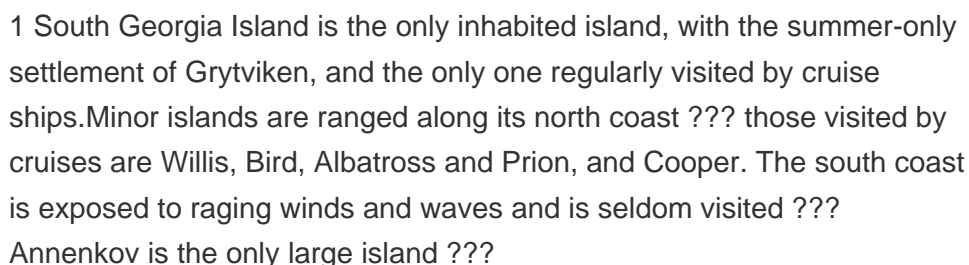
The strategy has also been developed in conjunction with the Government of South Georgia and the South Sandwich Islands, who will also publish, on their website, their own complementary 5-year



South Georgia and the South Sandwich Islands are a chain of Subantarctic islands in the Southern Ocean surrounding Antarctica. The islands are an overseas territory of the United Kingdom: they have no permanent residents ???



(South Georgia and South Sandwich Islands)???, 1982???



LINA BATTERY SOUTH GEORGIA AND SOUTH SANDWICH ISLANDS



With 11 main islands and several smaller islets, the South Sandwich Islands are also part of the South Georgia British Overseas Territory, despite lying around over 700-kilometres southeast. Volcanic in origin, this island chain is incredibly ???



The island of South Georgia is unusual among oceanic islands for having pre-Cretaceous sedimentary rocks underlying much of the island and a significant portion of felsic igneous rocks. Two-thirds of the island consists of intensely folded flysch, capped with Aptian age fossils, tuff and greywacke in the Cumberland Bay Series.